

FLUKE®

Fluke Thermal Imagers
DESIGNED BY YOU.
BUILT FOR YOU.



Exceptional quality.
Built tough for the job site.
Intuitive to use.
Maintenance, inspection and troubleshooting tasks
have never been easier.

NOTHING feels like a Fluke thermal imager.

NOT in your hand.
NOT in your head.
NOT on the job.

Simply holding a Fluke thermal imager is responsible for convincing more professionals to buy Fluke than any other. The instant you pick up a Fluke, you feel the difference; from the natural way it fits in your hand, to the innate sense of quality.

All Fluke thermal imagers are designed, engineered, tested, and assembled in the United States, with legendary Fluke ruggedness from the inside out.

Each imager is Torture Tested™. To the extreme.



INSIGHT
EFFICIENCY
PROFITABILITY



DESIGNED by you. BUILT for you.

Fluke thermal imagers are designed for how you do your job.

Fluke commercial thermal imagers were the first with:

- One-touch manual focus system
- IR-OptiFlex™ focus system (on select models) takes the guess work out of image focus
- Voice annotation
- 8-point cardinal compass on screen
- Intuitive user interface lets you put more time on the job

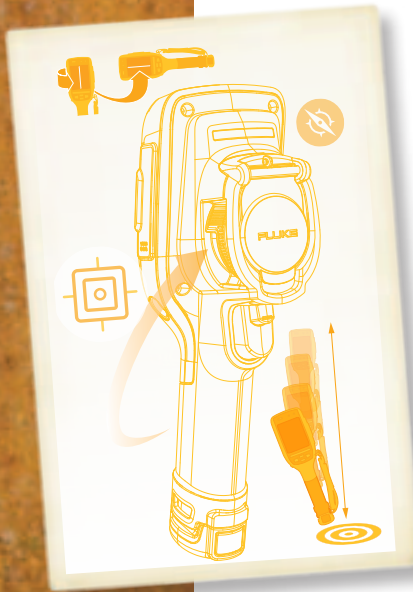


Fluke CNX Wireless System

Take readings QUICKER, solve problems FASTER and create MORE THOROUGH reports to share with your customers.

Find out more at
www.fluke.com/TI-CNX





Since 1948, Fluke's leadership in test and measurement tools has been firmly based on our understanding of how you work and what day-to-day challenges you see on the job. We know test and measurement. We know thermal imaging.

"I recently purchased a Fluke Ti32 Thermal Imager—my first Fluke—to replace another thermal imager. The Ti32 saves me about four hours per survey, which is significant. The increased resolution over my old imager is much crisper and has improved the image quality and temperature accuracy in my reports. My customers are very happy!"

*Kenny Sullivan
Advantage Reliability*

The difference is in the PERFORMANCE

Fluke pioneered IR-Fusion® technology in 2005, helping you identify potential problems, and generate thermal images with even greater detail. If someone promises you a feature similar to Fluke IR Fusion®, ask yourself, "Do I want something similar to Fluke IR Fusion®?" Or do I want Fluke IR Fusion®?"

Fluke commercial thermal imagers were the first with patented IR-Fusion® technology, providing the perfect blending of infrared and visible images. IR-Fusion® technology includes:

- AutoBlend™ mode to blend partially transparent and visible images into a single view
- Picture-in-Picture mode to easily orient and reference areas of interest
- Color alarms to isolate problematic areas within user-defined temperature ranges
- Easily view, optimize, annotate and analyze IR images and videos
- Generate professional-looking reports with the push of a button



Consider adding Fluke IR Windows® to help perform safer and easier infrared maintenance inspections without opening electrical panels or gearing up in bulky arc flash suits.

HOW TO CHOOSE a thermal imager

Here are the most important things to consider when selecting a thermal imager.

TRUST

We take product quality and brand reputation seriously. So should you.

PERFORMANCE

Make sure the temperature range, resolution and features support the tasks at hand and environments in which the thermal imager will be used.

SOFTWARE

Is it easy to use the thermal imager, analyze the images and produce professional looking reports? It should be.

ACCESSORIES

Car chargers, sun visors, specialized lenses and other accessories can greatly enhance the application and performance of a thermal imager.

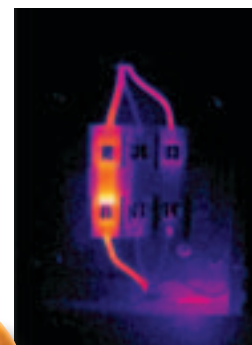
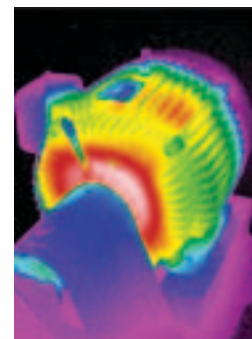
SEE FOR YOURSELF

The Fluke difference is felt in the design and build quality and seen in the thermal images you produce. Don't take our word for it—schedule a demo today or talk to your local Fluke representative and experience the Fluke difference for yourself.







Don't make your decision until you have held a Fluke thermal imager in your hands, feel that Fluke difference!

Request an in-person demo at www.fluke.com/tidemorequest








Want to know which Fluke thermal imager is right for you? Give us a call at 1-800-760-4523 (U.S.) or 1-800-363-5853 (Canada) between the hours of 8 a.m. and 5 p.m. CT.



A Fluke thermal imager for EVERY industrial job

	General use		Industrial and commercial maintenance use			
	Ti100	Ti105	Ti110	Ti125	Ti27	Ti29
						
Description	Standard performance, everyday operation		Most functionality, easiest to use		Highest resolution, best thermal sensitivity	
Typical applications	Straightforward maintenance and inspection tasks		Advanced inspection, troubleshooting and maintenance tasks—made easy—in a variety of industrial and commercial environments		The most detailed inspection, troubleshooting and maintenance tasks—made easy—in a variety of industrial and commercial environments	
Perfect for	Industrial and commercial professionals as well as Inspectors and building professionals needing pickup-and-go simplicity	Industrial and commercial professionals needing pickup-and-go simplicity	Maintenance managers, electricians and technicians who value ease of use and time-saving functionality		Maintenance managers, electricians and technicians who value ease of use and time-saving functionality	
IR resolution	160 x 120				240 x 180	280 x 210
Thermal sensitivity (NETD)	≤ 0.20 °C at 30 °C (200 mK)	≤ 0.10 °C at 30 °C (100 mK)		≤ 0.05 °C at 30 °C (50 mK)		
Temperature range	-20 °C to 250 °C (-4 °F to 482 °F)		-20 °C to 350 °C (-4 °F to 662 °F)		-20 °C to 600 °C (-4 °F to 1112 °F)	
Field of view (FOV)	22.5° H x 31° V				23° H x 17° V	
Spatial resolution (IFOV)	2.5 mRad	3.39 mRad		1.67 mRad	1.43 mRad	
Features	<ul style="list-style-type: none"> Fully radiometric Windows based navigation menu SmartView® software included Fluke CNX wireless enabled with software download.* 	<ul style="list-style-type: none"> Patented IR-Fusion® technology picture-in-picture Rugged, easy to release battery system Fully radiometric Laser pointer Windows based navigation menu SmartView® software included Fluke CNX wireless enabled with software download.* 	<ul style="list-style-type: none"> Patented IR-Fusion® technology picture-in-picture Rugged, easy to release battery system Flash and torch light Fully radiometric Laser pointer Windows based navigation menu SmartView® software included Fluke CNX wireless enabled with software download.* 	<ul style="list-style-type: none"> Patented IR-Fusion® technology picture-in-picture and AutoBlend™ Rugged, easy to release battery system Fully radiometric Windows based navigation menu SmartView® software included 		

* Select countries, find out more about the capabilities of Fluke CNX at www.fluke.com/TI-CNX.

Building diagnostic use							
	Ti32	TiR105	TiR110	TiR125	TiR27	TiR29	TiR32
							
ity, the ultimate IR tool		Standard performance, everyday operation	Most functionality, easiest to use		Highest resolution, best thermal sensitivity, the ultimate IR tool		
g and maintenance tasks in special environments.		Basic identification of heat loss/gain, air leakage and moisture		Intermediate building, home and roofing inspections (heat loss/gain, air leakage and moisture)	Advanced building, home and roofing inspections, diagnostics and analyses (heat loss/gain, air leakage and moisture)		
icians who need to see the short or long distances		Inspectors and building professionals needing pickup-and-go simplicity	Inspectors, energy auditors, restoration and remediation professionals and weatherization experts who value ease of use and time-saving functionality		Inspectors, energy auditors, restoration and remediation professionals and weatherization experts who need to see the smallest and most challenging infrared details from short and long distances		
	320 x 240	160 x 120			240 x 180	280 x 210	320 x 240
	≤ 0.045 °C at 30 °C (45 mK)	≤ 0.08 °C at 30 °C (80 mK)			≤ 0.05 °C at 30 °C (50 mK)		≤ 0.040 °C at 30 °C (45 mK)
		-20 °C to 150 °C (-4 °F to 302 °F)			-20 °C to 600 °C (-4 °F to 1112 °F)		
		22.5° H x 31° V			23° H x 17° V		
	1.25 mRad	3.39 mRad			1.25 mRad		
re with color alarm		<ul style="list-style-type: none"> Patented IR-Fusion® technology picture-in-picture Rugged, easy to release battery system Fully radiometric Laser pointer Windows based navigation menu SmartView® software included Fluke CNX wireless enabled with software download.* 	<ul style="list-style-type: none"> Patented IR-Fusion® technology picture-in-picture Rugged, easy to release battery system Flash and torch light Fully radiometric Laser pointer Windows based navigation menu SmartView® software included Fluke CNX wireless enabled with software download.* 		<ul style="list-style-type: none"> Patented IR-Fusion® technology picture-in-picture with color alarm and AutoBlend™ Rugged, easy to release battery system Fully radiometric Windows based navigation menu SmartView® software included 		

Want to know which Fluke thermal imager is right for you?

Give us a call at 1-800-760-4523 (U.S.) or 1-800-363-5853 (Canada) between the hours of 8 a.m. and 5 p.m. CT.

**TRUST nothing
but Fluke**

The entire Fluke portfolio is designed to work together, enabling better, more efficient inspections, corrective actions and results.

Bench Meters

Clamp Meters

Digital Multimeters

Distance Meters

Earth Ground Testers

Electrical Testers

Indoor Air Quality Tools

Insulation Resistance Testers

Power Quality Analyzers

Process Calibration Tools

ScopeMeter® Test Tools

Temperature Calibration

Thermal Imaging Tools

Thermometers

Vibration Testers

Accessories

Built tough for the job site and assembled in the U.S.A., Fluke thermal imagers help you maximize project efficiency and insight. For your maintenance, inspection and troubleshooting tasks, *trust nothing but Fluke tools.*

United States

For more information:

www.fluke.com/thermography

Locate distributor locations:

Call 1-800-760-4523 or go to fluke.com/wheretobuy

Canada

For more information:

www.flukecanada.ca

Locate distributor locations:

Call 1-800-363-5853 or go to flukecanada.ca



Fluke Corporation
PO Box 9090,
Everett, WA 98206 U.S.A.

Fluke Europe B.V.
PO Box 1186, 5602 BD
Eindhoven, The Netherlands

For more information call:

In the U.S.A. (800) 443-5853 or Fax (425) 446-5116
In Europe/M-East/Africa +31 (0) 40 2675 200 or Fax +31 (0) 40 2675 222
In Canada (800)-36-FLUKE or Fax (905) 890-6866
From other countries +1 (425) 446-5500 or Fax +1 (425) 446-5116
Web access: <http://www.fluke.com>

©2012 Fluke Corporation. Specifications subject to change without notice.
Printed in U.S.A. 12/2012 2674264K_EN

Modification of this document is not permitted without written permission from Fluke Corporation.