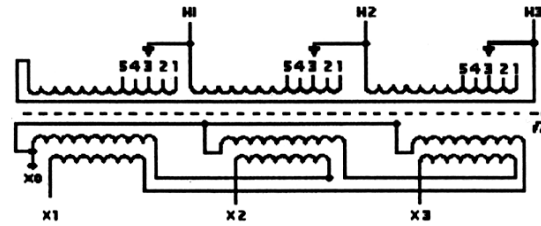
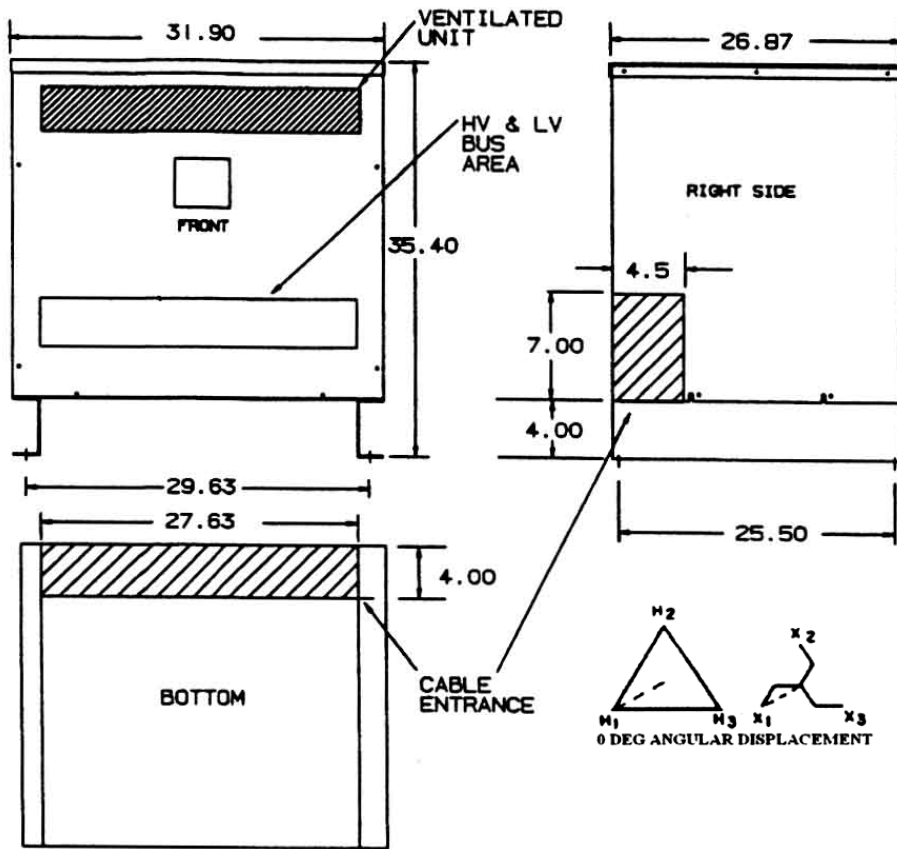
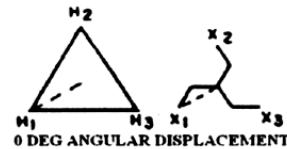


# Revisions



PRIMARY VOLTS	%	CONNECT LEADS TO TAP NO.
504	105	1
492	102.5	2
480	100	3
468	97.5	4
456	95	5

PRIMARY LINES TO H1-H2-H3,  
SECONDARY LINES TO X0-X1-X2-X3  
CAUTION: KEEP 3 TAP CONNECTIONS IN SAME POSITION WHEN TRANSFORMER IS IN OPERATION



NOTE: PRIMARY AND SECONDARY BUS AREA IN FRONT OF CASE.

KEY: DENOTES CONDUIT AREAS

ACME ELECTRIC

Type No. CMT-53314-4S

Weather Shield – WS-A-3

KVA	CATALOG NUMBER	VOLTAGE		Windings	WEIGHT	PHASE	FREQ.
		HIGH	LOW				
75	<b>CMT-53314-4S</b>	480Δ	208Y/120	CU	760 Lbs	3φ	60 Hz

### TYPICAL PERFORMANCE DATA

Winding Rise	130°C
Insulation	220°C
Sound Level	50 dB

Regulation @ 100% PF	0.271%
----------------------	--------

Impedance	2.630%
-----------	--------

Typical Efficiency	97.41%
No Load Losses	309 W
Full Load Losses	1992 W