

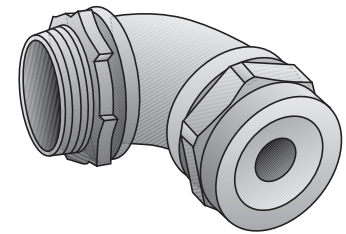
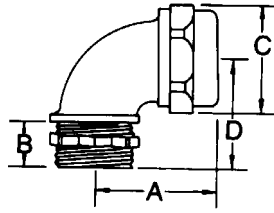
Gold Seal Strain Relief Connectors

Type SR9

90° Angle Connector

Features:

- Tapered threaded male hub NPT
- Watertight/Oiltight
- UL Listed NEMA 4 & 6 when installed into a NPT threaded entry or UL Listed conduit hub (sizes 1¼" and larger require thread sealant).
- Rated at 90°C



Type SR9-502

Material/Finish:

- Malleable Iron/Zinc Plated
- PVC grommets

Third Party Certification:



UL Listed: E-11857



CSA Certified: 009795

Applicable Third Party Standards:

- UL Standard 514B
- CSA Standard C22.2 No. 18
- Fed. Spec.: Commercial Item Description A-505-52

Note:

1. Gold Seal connectors available with insulated throat. Add suffix "T". Example: SR-502T. Contact your local representative for price and availability.
2. For multi-hole applications, contact your local representative for price and availability.

Catalog Number	Cable Range (in.) Dia. Over Jacket		Hub Size Inches	Throat I.D.	Dimensions in Inches			
	Min.	Max.			A	B	C	D
SR9-502+	.100	.200	½	.50	1⅜	7/16	1¼	1¼
SR9-503+	.200	.300	½	.50	1⅜	7/16	1¼	1¼
SR9-504+	.300	.400	½	.50	1⅜	7/16	1¼	1¼
SR9-505+	.455	.555	½	.50	1⅜	7/16	1¼	1¼
SR9-506+	.500	.600	½	.61	1½	½	1¾	1¼
•SR9-507+	.600	.700	½	.61	1½	½	1¾	1¼
SR9-752	.100	.200	¾	.80	1⅜	7/16	1¾	1¼
SR9-753	.200	.300	¾	.80	1⅜	7/16	1¾	1¼
SR9-754+	.300	.400	¾	.80	1⅜	7/16	1¾	1¼
SR9-755+	.400	.500	¾	.80	1⅜	7/16	1¾	1¼
SR9-756+	.500	.600	¾	.80	1⅜	7/16	1¾	1¼
SR9-757+	.600	.700	¾	.80	1⅜	7/16	1¾	1¼
SR9-758+	.700	.800	¾	.82	1⅞	9/16	1¾	1½
SR9-1002	.100	.200	1	.95	2	½	1⅝	1¼
SR9-1003	.200	.300	1	.95	2	½	1⅝	1¼
SR9-1004	.300	.400	1	.95	2	½	1⅝	1¼
SR9-1005	.400	.500	1	.95	2	½	1⅝	1¼
SR9-1006+	.500	.600	1	.95	2	½	1⅝	1¼
SR9-1007+	.600	.700	1	.95	2	½	1⅝	1¼
SR9-1008+	.700	.800	1	.95	2	½	1⅝	1¼
SR9-1009+	.800	.900	1	.95	2	½	1⅝	1¼
•SR9-10010+	.900	1.000	1	.95	2	½	1⅝	1¼
SR9-12510+	.900	1.000	1¼	1.10	2⅛	5/8	1⅝	2⅝
•SR9-12512+	1.000	1.200	1¼	1.10	2⅛	5/8	1⅝	2⅝
SR9-15012+	1.000	1.200	1½	1.39	2⅝	5/8	2⅝	2¼
•SR9-15014+	1.200	1.400	1½	1.39	2⅝	5/8	2⅝	2¼
SR9-20014+	1.200	1.400	2	1.77	3⅞	1⅛	3	3⅛
SR9-20016+	1.400	1.600	2	1.77	3⅞	1⅛	3	3⅛
•SR9-20018+	1.600	1.800	2	1.77	3⅞	1⅛	3	3⅛

•Remove enough jacket to get conductors through Throat I.D.

†UL Listed NEMA 4, 6 & 12 when installed into a NPT threaded entry or UL Listed conduit hub.