

Liquidtight Connectors

Hot-Dip/Mechanically Galvanized with Insulated Throat

Type 4Q-TG

For Use in Severe Industrial and Environmental Atmospheres

Standard zinc electroplated fittings offer more than adequate protection in areas relatively free of highly corrosive fumes and liquids. However, in an atmosphere where severe contaminants are present, a heavy coating of zinc galvanize offers one of the best protections against corrosion. In the processes of hot-dipping or mechanically galvanizing, a large amount of zinc is deposited on the surface of the base metal to a minimum of .002" or about 10 times the usual electroplating thickness.

In the Series 4Q-TG, mechanically galvanized finish is provided on small sizes through 2" on angle connectors and through 4" on straights. Hot-dip galvanized finish is provided on sizes 2½" and larger on angle connectors and 5" and larger on straights. Mechanical galvanizing provides coating thickness and corrosion protection comparable to the hot-dip process but offers the additional advantage of providing heavy plating on threaded surfaces as well. Mechanical galvanizing meets the performance criteria of ASTM A-153 Class D and B-695 Class 50.

The Process of *Mechanical Galvanizing* on Smaller Parts Provides:

- Excellent coating uniformity on all surface areas, particularly on threads.
- Complete coating assurance with proper mating of threaded parts.
- A heavier coating than is possible with conventional methods of electroplating.
- Quality and thickness comparable to the hot-dip galvanizing method.
- Favorable comparison with the hot-dip process of parts tested in salt spray and industrial atmospheres.

Liquidtight Fittings

Hot-Dip/Mechanically Galvanized with Insulated Throat

Type 4Q-TG

Straight

Use:

To secure, ground and seal Liquidtight Flexible Metal conduit, Type LFMC, to boxes and enclosures.


Features:


- With Insulated Throat
- Tapered threaded male hub NPT
- Compact, slim diameter with small turning radius
- Furnished with locknut and KO sealing ring.
- Liquidtight/Raintight/Oiltight/Concretetight
- UL Listed NEMA Type 4 when installed into a NPT threaded entry or UL Listed conduit hub (sizes 1½" and larger require thread sealant).
- Suitable for grounding through 1-1/4" Trade Size per NEC Section 250.118(7)
- For Trade Sizes 1-1/2" and larger, an internal or external equipment bonding conductor is required. See 4Q-L Series with external ground lug in Catalog Section GB.
- Suitable for use in the following Hazardous Locations:
 - Class I, Div. 2 per NEC 501.4(B)
 - Class I, Zone 2 per NEC 505.15(C)(2)
 - Class II, Div. 1 per NEC 502.4(A)(1)(e)
 - Class II, Div. 2 per NEC 502.4(B)(2)
 - Class III, Div. 1 per NEC 503.3(A)(2)
 - Class III, Div. 2 per NEC 503.3(B)
- Intrinsically Safe per NEC 504.20
- Bonding Wedge Locknuts are recommended in Hazardous Locations. See 101 Series on Page DB8.
- Suitable for wet locations
- Long ferrule prevents pullout and tight bend conduit "pop-out"
- Inspection windows in ferrule to ensure full engagement
- Provided with insulated throat
- See Page GC4 for our patented Ferrule Wrench which makes ferrule installation easy.

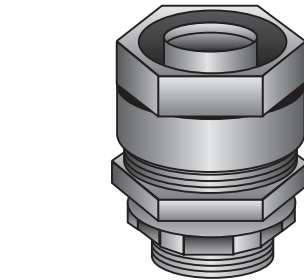
Material/Finish:

Malleable Iron/Galvanized
Steel Ferrule/Zinc Electroplated

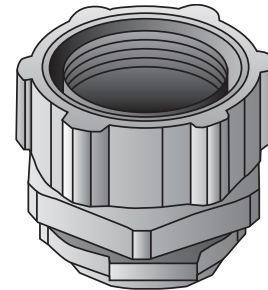
Third Party Certification:

 UL Listed: 11853

 CSA Certified: 9795



Type 4Q-38TG — Type 4Q-200TG

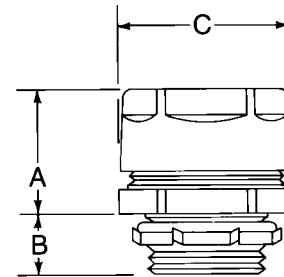


Type 4Q-250TG — Type 4Q-600TG

Trade Size (inches)	Insulated Throat Catalog Number	Dimensions in Inches		
		A	B	C
¾ (½ KO)	4Q-38TG	1	½	1⅞
½	4Q-50TG	1	½	1¼
¾	4Q-75TG	1⅞	½	1½
1	4Q-100TG	1¼	⅝	1¾
1¼	4Q-125TG	1⅞	⅝	2½
1½	4Q-150TG	1⅞	⅝	2¼
2	4Q-200TG	1½	⅝	3¼
2½	4Q-250TG	2	1	4⅞
3	4Q-300TG	2	1⅞	4⅞
3½	4Q-350TG	2¼	1¼	4⅞
4	4Q-400TG	2¼	1¼	6⅞
5	4Q-500TG*	2⅞	1⅞	7⅞
6	4Q-600TG*	2½	1⅞	8⅞

*UL Listing not applicable

*CSA Certification not applicable



Liquidtight Fittings

Hot-Dip/Mechanically Galvanized with Insulated Throat

Type 4Q-TG

45° & 90°

Use:

To secure, ground and seal Liquidtight Flexible Metal conduit, Type LFMC, to boxes and enclosures.

Features:

- Tapered threaded male hub NPT
- Compact, slim diameter with small turning radius.
- Furnished with locknut and KO sealing ring.
- Liquidtight/Raintight/Oiltight/Concretetight
- UL Listed NEMA Type 4 when installed into a NPT threaded entry or UL Listed conduit hub (sizes 1¼" and larger require thread sealant).
- Suitable for grounding through 1-1/4" Trade Size per NEC Section 250.118(7)
- For Trade Sizes 1-1/2" and larger, an internal or external equipment bonding conductor is required. See 4Q-L Series with external ground lug in Catalog Section GB.
- Suitable for use in the following Hazardous Locations:

Class I, Div. 2 per NEC 501.4(B)

Class I, Zone 2 per NEC 505.15(C)(2)

Class II, Div. 1 per NEC 502.4(A)(1)(e)

Class II, Div. 2 per NEC 502.4(B)(2)

Class III, Div. 1 per NEC 503.3(A)(2)

Class III, Div. 2 per NEC 503.3(B)

Intrinsically Safe per NEC 504.20

• Bonding Wedge Locknuts are recommended in Hazardous Locations. See 101 Series on Page DB8.

• Suitable for wet locations.

• Long ferrule prevents pullout and tight bend conduit "pop-out".

• Inspection windows in ferrule to ensure full engagement.

• Provided with insulated throat

• See Page GC4 for our patented Ferrule Wrench which makes ferrule installation easy.

Material/Finish:

Malleable Iron/Galvanized

Steel Ferrule/Zinc Electroplated

Third Party Certification:



UL Listed: 11853



CSA Certified: 9795

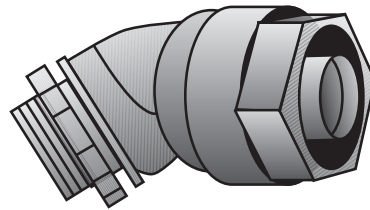
Applicable Third Party Standards:

UL Standard: 514B

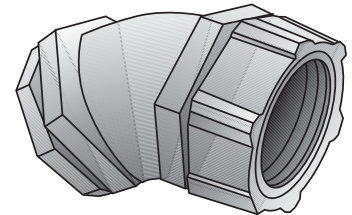
CSA Standard: C22.2 No. 18

NEMA: FB-1

Federal Spec: W-F-406E



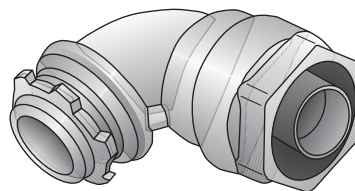
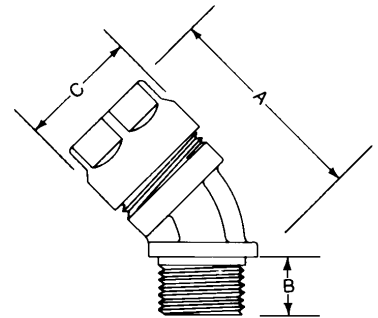
Type 4Q-438TG — Type 4Q-4200TG



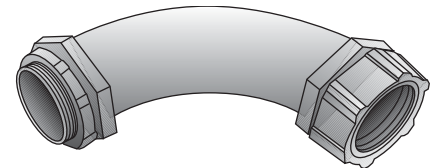
Type 4Q-4250TG — Type 4Q-4500TG

Trade Size (inches)	Insulated Throat Catalog Number	Dimensions in Inches		
		A	B	C Dia.
⅜ (½ KO)	4Q-438TG	1⅞	⅞	1⅞
½	4Q-450TG	1⅞	⅞	1¼
¾	4Q-475TG	2¼	⅞	1½
1	4Q-4100TG	2⅞	½	1¼
1¼	4Q-4125TG	3¼	⅝	2¼
1½	4Q-4150TG	3⅞	⅝	2⅞
2	4Q-4200TG	4	⅝	3
2½	4Q-4250TG	5¼	1	4⅞
3	4Q-4300TG	6⅞	1⅞	4⅞
4	4Q-4400TG	7½	1¼	6⅞
5	4Q-4500TG•	8	1¼	7⅞

•UL Listing not applicable



Type 4Q-938TG — Type 4Q-9200TG



Type 4Q-9250TG — Type 4Q-9500TG

Trade Size (inches)	Insulated Throat Catalog Number	Dimensions in Inches			
		A	B	C	D
⅜ (½ KO)	4Q-938TG	1⅞	⅞	1⅞	1⅞
½	4Q-950TG	1⅞	⅞	1¼	1⅞
¾	4Q-975TG	1⅞	½	1½	1½
1	4Q-9100TG	2	½	1¾	1⅞
1¼	4Q-9125TG	2¼	⅝	2¼	2⅞
1½	4Q-9150TG	2⅞	⅝	2⅞	2¼
2	4Q-9200TG	3½	¾	3	2⅞
2½	4Q-9250TG	7½	1	4⅞	7⅞
3	4Q-9300TG	8⅞	1⅞	4⅞	8½
4	4Q-9400TG	11⅞	1⅞	6⅞	11
5	4Q-9500TG•	14	1¼	7⅞	14

•UL Listing not applicable

