

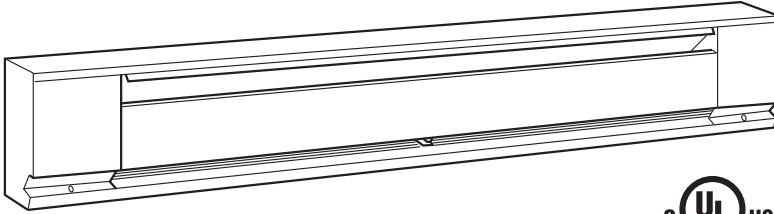


A Marley Engineered Products Brand

470 Beauty Spot Rd. E, Bennettsville, SC 29512

SUBMITTAL SHEET BKOC SERIES COMMERCIAL CONVECTOR BASEBOARD HEATERS

BKOC SERIES - COMMERCIAL CONVECTOR BASEBOARD HEATERS



CAPACITIES
376 TO 2500 W
145 or 250 Watts/ft.
2'6", 3', 4', 5', 6' or 8' lengths
1 phase only

JOB NAME: _____

LOCATION: _____

ARCHITECT: _____

ENGINEER: _____

CONTRACTOR: _____

SUBMITTED BY: _____

DATE: _____

ITEM	QTY.	CATALOG NUMBER	TAG	LENGTH	WATTS	VOLTS	PHASE Ø	AMPS	AVAILABLE CONTROLS

ACCESSORIES AND CONTROLS

ITEM	QTY.	CAT. NO.	TAG	DESCRIPTION

SUBMITTED BY:	DATE

APPROVED BY:	DATE



A Marley Engineered Products Brand

470 Beauty Spot Rd. E, Bennettsville, SC 29512

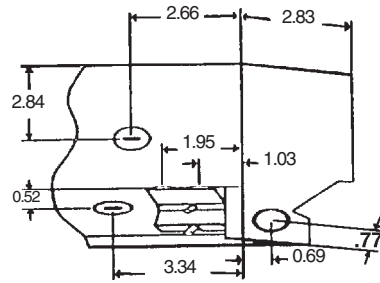
ARCHITECT'S & ENGINEER'S SPECIFICATIONS*

Furnish and install where indicated on plans, electric baseboard heaters, suitable for continuous operation as manufactured by Berko, A Marley Engineered Products Brand, Bennettsville, SC. Heaters shall be cULus listed.

ENCLOSURE: The heaters shall be fabricated of minimum .024 in. steel with minimum .040 in. steel control boxes. Support brackets shall be .035 in. steel. Junction box enclosure to have provisions for incoming and outgoing cable with cable clamp for restraining without additional hardware. Ground wire pigtail provided in each junction box for grounding.

FRONT COVER: The front cover shall be fabricated of minimum .048 in. steel.

HEATING ELEMENT: The heating element wire shall consist of 80% nickel, 20% chromium, and shall be encased in steel sheath to assure long and trouble free life. Aluminum fins shall be so designed as to block sheath radiation to front and back of heater body and pressure bonded to steel sheath.



Wiring Compartment Dimensions

All knockouts are 7/8 inch diameter for 1/2 inch conduit.

INSTALLATION: Heaters shall be designed to permit use of supply conductors with 60°C insulation.

GENERAL: Navajo White or Northern White durable textured polyester powder coat finish for corrosion resistance. Linear thermal cut-out shall be factory installed to automatically shut off heater in event of overheating and reactivate heater when temperatures return to normal. The complete heater shall have a height of 6-3/4 inches and a depth of 2-7/8 inches. Heaters shall have cULus approval for mounting on any floor surface including carpeting

* Berko reserves the right to change specifications without prior notice.

SELECTION CHART

CATALOG NUMBER	VOLTS	WATTS	AMPS	LENGTH	SHIP WT. (LBS.)
BKOC25126W	120	500	4.2	2'6"	7.8
BKOC25026W	208	500	2.4		
BKOC25426W	240/208	500/376	2.1/1.8		
BKOC25726W	277/240/208	500/376/282	1.8/1.6/1.4	3'	9
BKOC2513W	120	750	6.3		
BKOC2503W	208	750	3.6		
BKOC2543W	240/208	750/564	3.1/2.7	4'	11.5
BKOC2573W	277/240/208	750/564/423	2.7/2.4/2.0		
BKOC2514W	120	1000	8.3		
BKOC2504W	208	1000	4.8	5'	13
BKOC2544W	240/208	1000/752	4.2/3.6		
BKOC2574W	277/240/208	1000/752/564	3.6/3.1/2.7		
BKOC2515W	120	1250	10.4	6'	15.5
BKOC2505W	208	1250	6		
BKOC2545W	240/208	1250/940	5.2/4.5		
BKOC2575W	277/240/208	1250/940/705	4.5/3.9/3.4	8'	20
BKOC2516W	120	1500	12.5		
BKOC2506W	208	1500	7.2		
BKOC2546W	240/208	1500/1128	6.3/5.4	8'	20
BKOC2576W	277/240/208	1500/1128/846	5.4/4.7/4.1		
BKOC2508W	208	2000	9.6		
BKOC2548W	240/208	2000/1504	8.3/7.2	8'	20
BKOC2578W	277/240/208	2000/1504/1128	7.2/6.3/5.4		
BKOC25008W	208	2500	12		
BKOC25408W	240/208	2500/1880	10.4/9.0	8'	20
BKOC25708W	277/240/208	2500/1880/1410	9.0/7.9/6.8		

NOTE: High Altitude baseboard heater (above 7500 feet) add suffix "H" to model number.

ACCESSORIES AND CONTROLS

CATALOG NUMBER	DESCRIPTION	SHIP WT.
TA1AW	SP Thermostat, rated 22A @ 120-277V	1
TA1TPAW	Tamper resistant version of above.	1
TA2AW	DP Thermostat, rated 22A @ 120-277V	1
TA2TPAW	Tamper resistant version of above.	1
HCA121520W	120V Load Transfer Switch	1
HCA241520W	240V Load Transfer Switch	1
RA1W	120V Duplex Receptacle	1
RA1COMPW	Duplex Receptacle Cover only (Carton of 10)	3
DSW2W	Double Pole Disconnect Switch Rated 20A @ 120-277V	1
PR24	Single Pole Power Relay 24V Control Rated 30A @ 120-240V 23A @ 277V, 10A @ 347V	1
PR120	Same as above except 120V Control.	1

CATALOG NUMBER	DESCRIPTION	SHIP WT.
RSA1224	120/24V Transformer Relay - 25A	1
RSA2024	208/24V Transformer Relay - 25A	1
RSA2424	240/24V Transformer Relay - 25A	1
RSA2724	277/24V Transformer Relay - 25A	1
ICAW	Inside Corner.	1
BDA2W	2' 6" Blank Section.	3
BDA3W	3' Blank Section.	4
BDA4W	4' Blank Section.	6
BDA5W	5' Blank Section.	8
BDA6W	6' Blank Section.	10
BDA8W	8' Blank Section.	13
BKOCFS12	1' Filler Section	1
BKOCFS24	2' Filler Section	3
BKOCFS36	3' Filler Section	5
BKOCFS48	4' Filler Section	7
BKOCFSJ2	2" Joiner Strip	1/2