

Special Power Packs & Supplies

PROJECT

LOCATION/TYPE

Product Overview

AT Power Supply

Description

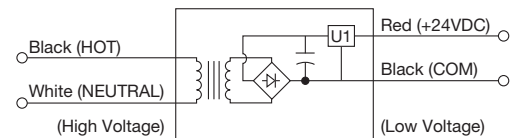
WattStopper has several power packs and power supplies that fill the needs of a variety of special applications. These products help to make lighting control installations more cost efficient and flexible.

AT Power Supplies

The AT-120 and AT-277 power supplies provide up to 800 mA of 24 VDC to WattStopper occupancy sensors and control products. They contain a transformer and no relay. WattStopper power and/or auxiliary packs are needed to do the switching. The AT-120 and AT-277 are useful for applications with a large number of sensors such as open offices and warehouses.

AT Specifications & Wiring

- Up to 800 mA of 24 VDC power
- Secondary voltage of 24 VDC
- Housed in NEMA 1 enclosure



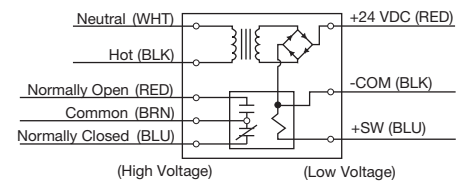
Form C Power Pack

Form C Power Packs

The Form C power packs contain a single pole, double-throw isolated relay with a normally open and normally closed output. These power packs can be used with a standard occupancy sensor to interface with HVAC or other systems. Special attention needs to be made to the load ratings as they vary and are significantly lower than standard power packs.

Form C Specifications & Wiring

- Up to 100 mA of 24 VDC power before relay is connected; 64 mA after relay is connected
- Secondary voltage of 24 VDC
- UL rated 94V-0 plastic enclosure with snap-in installation



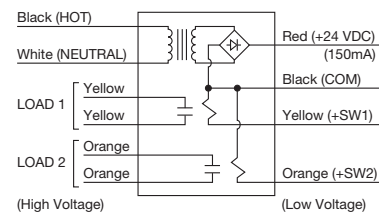
2 Relay Power Pack

2 Relay Power Packs

The WattStopper C-Series power packs contain 2 isolated relays. These power packs can be used where 2 circuits need to be controlled at the same point. They provide a convenient alternative to using 2 power packs thus reducing installation time and costs. They are also useful where installation space is limited.

2 Relay Specifications & Wiring

- Up to 150 mA of 24 VDC power before relays are connected; 114 mA after single relay is connected, 78 mA when both relays are connected
- Secondary voltage of 24 VDC
- Housed in 4" metal junction box



Ordering Information

Catalog No.	Description/Type	Input Voltage	Load Ratings			Output
			Ballast (A)	Incan (A)	Motor (HP)	
<input type="checkbox"/> AT-120	Power Supply	120 VAC, 60 Hz	-	-	-	24 VDC; 800 mA
<input type="checkbox"/> AT-277	Power Supply	277 VAC, 60 Hz	-	-	-	24 VDC; 800 mA
<input type="checkbox"/> A120C-P	Form C Power Pack	120 VAC, 60 Hz	8NO/5NC	5NO/3NC	1NO/.25NC	24 VDC; 100 mA*
<input type="checkbox"/> A277C-P	Form C Power Pack	277 VAC, 60 Hz	6NO/3NC	5NO/2.5NC	2NO/.5NC	24 VDC; 100 mA*
<input type="checkbox"/> C120E-P	2 Relay Power Pack	120 VAC, 60 Hz	20**	13**	1**	24 VDC; 150 mA
<input type="checkbox"/> C277E-P	2 Relay Power Pack	277 VAC, 60 Hz	20**	-	-	24 VDC; 150 mA

*Contains an isolated relay with normally open (NO) and normally closed (NC) contacts. **Rating per relay.

Output shown is before relay connection

Pub No. 6805 rev. 10/2009

WattStopper®
www.wattstopper.com
800.879.8585

A Group brand | **legrand**

www.wattstopper.com | 800.879.8585