

## Bring High Capacity Power and Communication Services to Above Grade Open Space Areas

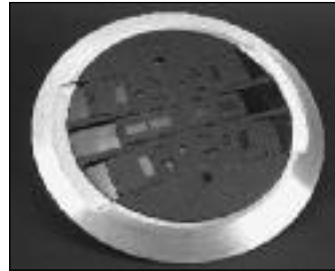


Protection from water, dirt, and debris.

**Wiremold®** Poke-Thru Devices provide power, communication, and A/V services to the open space areas of above grade floors. These poke-thru devices are available with either flush or pedestal type service heads and are used to feed individual workstations, modular furniture systems, conference rooms, and computer rooms. These poke-thru devices have TopGuard™ protection, which exceeds the UL requirements for use on carpet, tile, or wood floor applications. The purpose of this requirement is to ensure that water does not enter into the power compartment of the poke-thru device when exposed to cleaning equipment such as mops or shampooing equipment.



RC9AM2TC Large Capacity Furniture Feed Poke-Thru Series



RC4 Series



AV3 Flush Poke-Thru Series



AMD8 All Communication Flush Poke-Thru Series

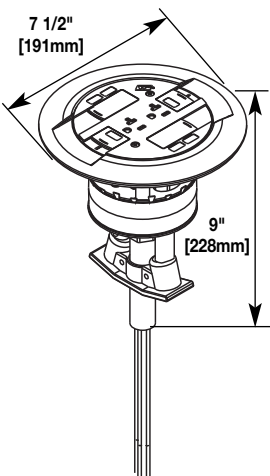


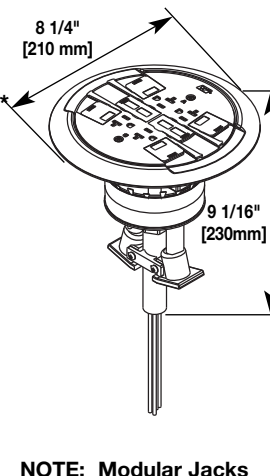
RC7 Flush Series on tile floor

### FEATURES & BENEFITS

- **The new AV3 Series is specifically designed to meet the growing needs of the audio and video market.** The AV3 Series accepts the Extron® MAAP Series mini architectural adapter plates. The MAAP line includes passive A/V connector plates that support a wide variety of video, audio, control, voice and data connectors as well as active modules such as VGA line drivers, audio buffers and twisted pair transmitters. (Extron® devices sold separately only through authorized Extron® dealers).
- **The new AMD8 Series is designed to meet the growing need for more communication capacity at the workstation.** The AMD8 is the largest capacity all communication poke-thru device on the market, providing up to 8-ports for communication devices. The AMD8 is a flush style device with individual slide covers to prevent water, dirt and debris from entering the communication devices.
- **Individual slide cover protection.** All flush style devices have slide covers to protect power and communication devices. Power slide covers snap back into place when receptacle is not in use to prevent water, dirt, and debris from entering the device. Flexibility to activate either power or communication services simultaneously or individually.
- **TopGuard protection.** An integral design which keeps out water, dirt, and debris from the power and communication compartments. Whenever you see the TopGuard protection icon applied to any Wiremold product, you will know that the product meets and exceeds the new UL scrub water exclusion requirement.
- **Communication connectivity options.** Accepts industry standard and proprietary devices from a wide range of manufacturers to provide a seamless and aesthetically pleasing interface for voice, data, audio, and video applications at the point-of-use.
- **“Step-on-it” installation.** Allows quick and easy installation without the need for additional fasteners.
- **New brushed aluminum flange option on flush style devices.** Provides additional color options for better aesthetics.
- **Suitable for use in plenums in accordance with Sec. 300-22 (C) of the National Electrical Code.**
- **UL Listed and UL Fire Classified to U.S. and Canadian safety standards for tile, terrazzo, and the UL requirement under UL514A and UL514C for the scrub water exclusion test for carpet and wood floors.**

## Chicago Approved Poke-Thru Devices Ordering Information (Continued)

Catalog No./Item		Description/Specifications		
Catalog Number Explanation <b>RC3ATCAL-LJB</b>				
<b>RC3</b>	<b>A</b>	<b>TC</b>	<b>AL</b>	<b>LJB</b>
Identifies Poke-Thru Series	Identifies Assembled Unit (A) or Cover (C)	Identifies that Unit is Approved for Tile and Carpet Floors	Identifies Color of Cover Assembly (See below for details)	Identifies Junction Box (Not Included)
<p><b>RC3ATCGY-LJB*</b>  <b>RC3ATCBK-LJB*</b>  <b>RC3ATCAL-LJB*</b>  <b>RC3ATCBS-LJB*</b>  <b>RC3ATCVY-LJB*</b>  <b>RC3ATCAB-LJB*</b></p>		<p><b>Assembled Unit</b> – Prewired 20A duplex receptacle can be wired as standard duplex or isolated ground. Wiremold Open System unloaded inserts to accept four discrete keystone connectors from most manufacturers are provided.</p> <ul style="list-style-type: none"> <li>Includes 2 Ortronics TracJack mounting bezels and 2 Ortronics Series II bezels. (Modular Jacks sold separately.)</li> </ul> <p>UL Listed for tile, carpet, and wood covered floors. For complete listing of RC3 Series accessories, see current version of Product Specification Sheet ED1215.</p> <p style="text-align: center;"><b>NOTE: Modular Jacks sold separately.</b></p>		
				
<p><b>NOTE:</b></p> <ul style="list-style-type: none"> <li>For installations in the City of Chicago, install an EMT compression fitting (not supplied) to the conduit system and a junction box suitable for use in environmental air spaces, if required, (not supplied). Complete installation per NEC and local codes.</li> </ul>				

Catalog No./Item		Description/Specifications		
Catalog Number Explanation <b>RC4ATCAL-LJB</b>				
<b>RC4</b>	<b>A</b>	<b>TC</b>	<b>AL</b>	<b>LJB</b>
Identifies Poke-Thru Series	Identifies Assembled Unit (A) or Cover (C)	Identifies that Unit is Approved for Tile and Carpet Floors	Identifies Color of Cover Assembly (See below for details)	Identifies Junction Box (Not Included)
<p><b>RC4ATCGY-LJB*</b>  <b>RC4ATCBK-LJB*</b>  <b>RC4ATCAL-LJB*</b>  <b>RC4ATCBS-LJB*</b>  <b>RC4ATCAB-LJB*</b>  <b>RC4ATCVY-LJB*</b></p>		<p><b>Assembled Unit</b> – Unit includes four prewired 20A receptacles. Each duplex can be wired as a separate circuit. The duplex can be wired as a standard receptacle or isolated ground. Wiremold Open System unloaded inserts to accept four discrete keystone connectors from most manufacturers are provided.</p> <ul style="list-style-type: none"> <li>Includes Ortronics TracJack mounting bezel and Ortronics Series II communication housing. (Modular Jacks sold separately.)</li> </ul> <p>UL Listed for tile, carpet, and wood covered floors. For complete listing of RC4 Series accessories, see current version of Product Specification Sheet ED1215.</p> <p style="text-align: center;"><b>NOTE: Modular Jacks sold separately.</b></p>		
				
<p><b>NOTE:</b></p> <ul style="list-style-type: none"> <li>For installations in the City of Chicago, install an EMT compression fitting (not supplied) to the conduit system and a junction box suitable for use in environmental air spaces, if required, (not supplied). Complete installation per NEC and local codes.</li> </ul>				

Poke-Thru Devices on this page are available in some or all of the following cover color options as indicated by the part numbers:

- GY** – Gray painted flange with gray nonmetallic cover,
  - BK** – Black painted flange with black nonmetallic cover,
  - VY** – Ivory painted flange with ivory nonmetallic cover,
  - AL** – Brushed Aluminum flange with black nonmetallic cover
  - BS** – Brushed Brass flange with black nonmetallic cover
  - AA** – Brushed Aluminum flange with aluminum-colored nonmetallic cover
  - AB** – Brushed Brass flange with brass-colored nonmetallic cover
- Where applicable, slide covers match the cover color.