



WIRING DEVICE DIVISION

PBS PENDANT PUSHBUTTON STATION REPLACEMENT INSTRUCTIONS

PBS-PL1 AND PBS-PL2 PILOT LIGHT PBS-TS TOGGLE SWITCH

- Remove back cover (1) of Pendant Station.
- For new installations, push out plug from rear at pilot light/switch location. For replacement, unscrew and push out old light/switch.
- Insert pilot light or switch assembly (2) and seal from rear.
- Install legend plate (pilot light only) and lock ring, (3).
- Wire light/switch and reinstall back cover.

TB2 AND TB5 TERMINAL BOARD

- Remove back cover (1) of Pendant Station.

On 2 Button Pendant Stations:

- Remove cover guard (4), button cover (5), and switch insert by removing screws (6).
- Remove two 1/2" long screws (7).
- Remove old terminal board (9).
- Install new terminal board. Tighten screws to 10 in.-lbs torque.

Note: Observe "TOP" marking on terminal board.

- Wire terminal board and reinstall back cover.
- Reinstall switch insert, button cover, and button guard as described in MS2/MS5 replacement instructions below.

On 4, 6 and 8 Button Pendant Stations:

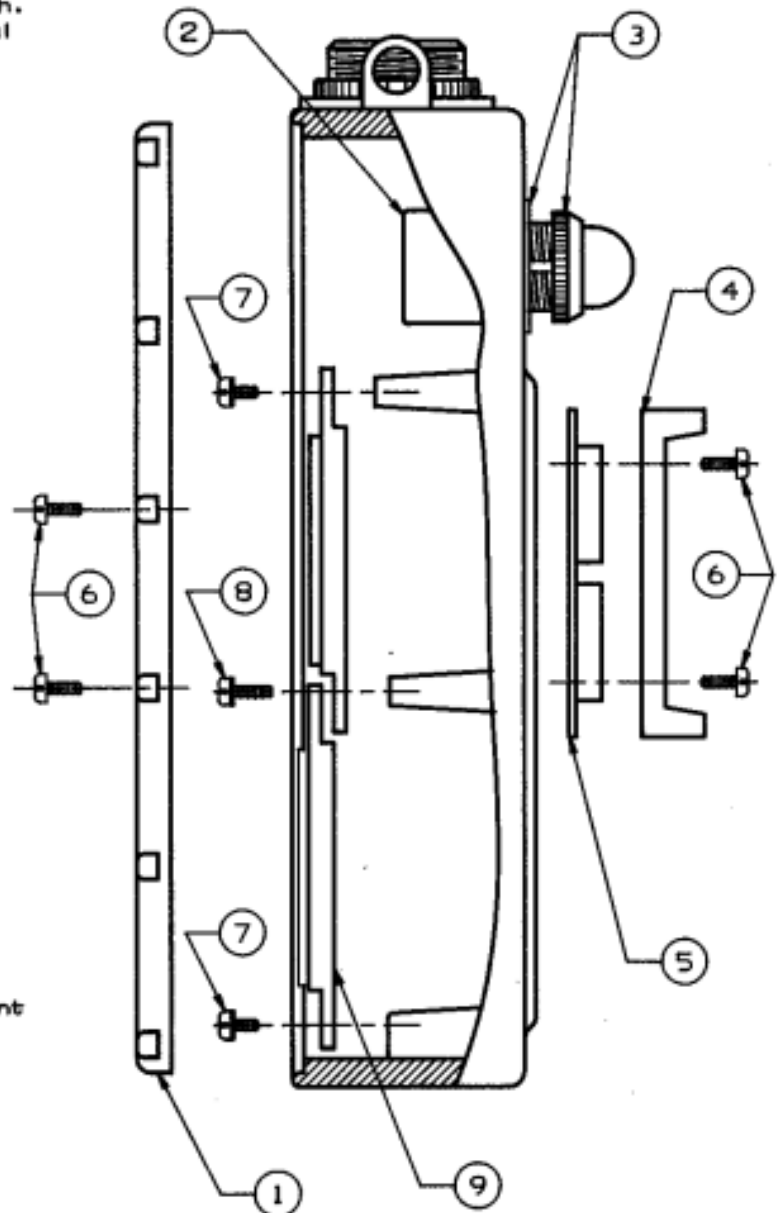
- Working from bottom to top, remove cover guards (4) and button covers (5) and switch inserts, up to the switch insert position where the terminal board is to be replaced, by removing screws (6).
- Working from bottom to top, remove terminal boards by removing screws (7) (1/2" long) and (8) (5/8" long), until desired terminal board is reached.
- Install replacement terminal board. Replace screws (7) and (8) and tighten to 10 in.-lbs. torque.

NOTE: Observe "TOP" marking on terminal boards.

- Wire terminal board and reinstall back cover.
- Reinstall switch inserts, button covers, and button guards as described in MS2/MS5 replacement instructions below.

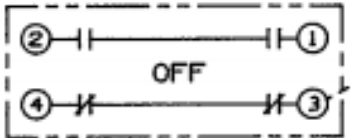
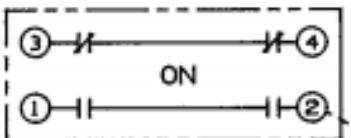
MS2, MS5, P02, P06 INSERTS AND PBS-BC REPLACEMENT BUTTON COVER

- To replace switch inserts, remove screws (6) and remove cover guard (4) and button cover (5).
 - On P02 and P06, also remove two center mounting screws.
 - Unplug switch insert.
 - Align keying tabs and holes of replacement insert with terminal board keying tabs and holes and push button assembly into terminal board.
 - On P02 and P06, tighten center mounting screws to 10 in.-lbs. torque.
 - Install button cover and cover guard using screws (6). Tighten screws to 10 to 12 in. lbs.
- Note: A slight rubber bulging is allowed.



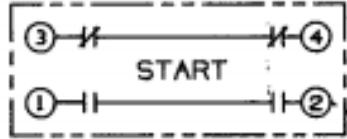
TYPICAL PENDANT STATION

**PG2
PUSHBUTTON INSERT**



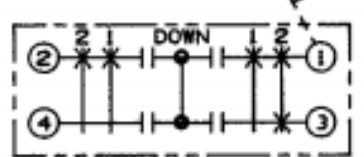
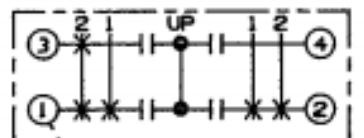
JUMPER BY CUSTOMER

**PG6 START-STOP
PUSHBUTTON INSERT**



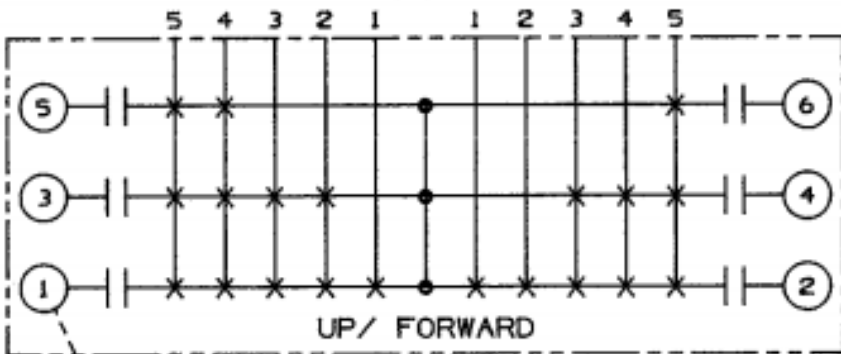
JUMPER BY CUSTOMER

**MS2 TWO-SPEED
PUSHBUTTON INSERT**

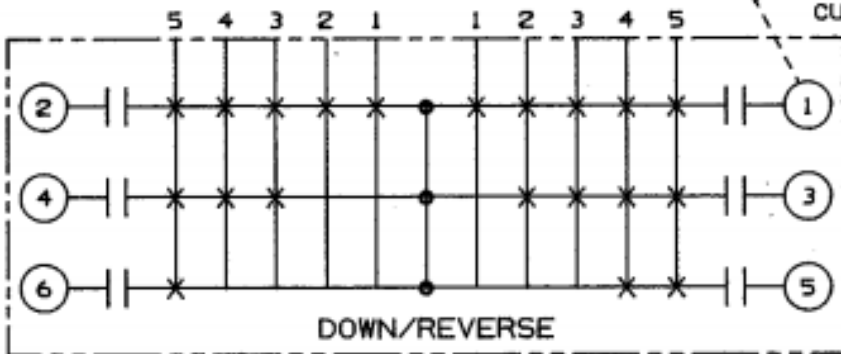


JUMPER BY CUSTOMER

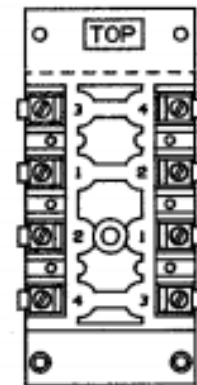
MSS



JUMPER BY CUSTOMER

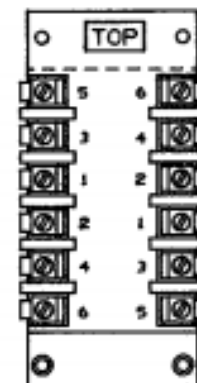


TB2



REAR VIEW

TB5



REAR VIEW

NOTES:

1. All inserts shown rear view.
2. Inserts PG2, PG6 and MS2 use TB2 terminal block.
3. Insert MSS uses TB5 terminal block.
4. "On-Off" button use recommended to comply with provisions of NEMA ICS 3-442.15.
5. "X" means contact closed.



WIRING DEVICE DIVISION