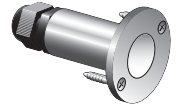
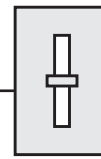
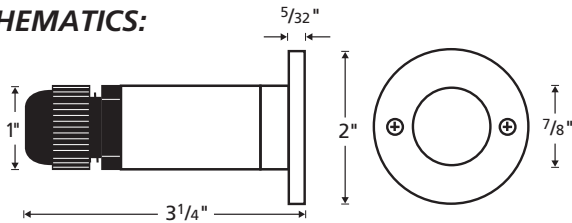


# LED MiniDisc Light

**NOW DIMMABLE!**



## SCHEMATICS:



## APPLICATIONS

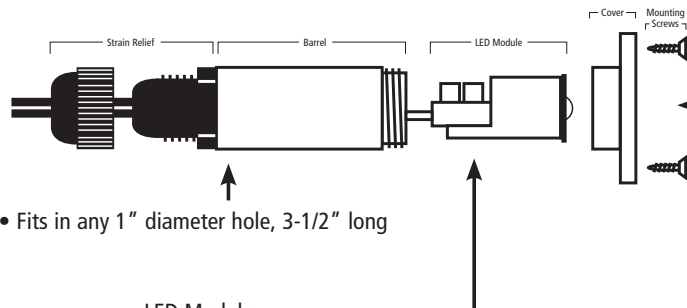
- ▶ Steps
- ▶ Aisles
- ▶ Paths
- ▶ Direction Lighting
- ▶ Information Lighting
- ▶ Decorative Lighting
- ▶ Merchandising
- ▶ Landscape Accents

## DESCRIPTION:


Die cast aluminum, or stainless steel, recessed mini LED accent fixture with prism cover design. Low 0.54 watt LED provides 80% energy savings vs. Xenon/Halogen technology. Dimmable. Fixture circuitry allows expandable system design from 1 to 100 fixtures per appropriate Class 2 LED driver. ETL listed for in-wall, in-floor, outdoor wet and outdoor burial applications. Offered in six LED colors and five fixture finishes.

### FEATURES

- Safe 12 volt, Class 2 power supply (remote)
- Up to 100 fixtures per power supply
- Dimmable



5 fixture finishes:  
Aluminum, Black, White,  
Bronze, Stainless Steel



Suitable for

- In wall applications
- In floor applications
- Outdoor wet locations
- Outdoor burial locations

- Fits in any 1" diameter hole, 3-1/2" long

LED Module

- Low energy requirements of 0.54 watt per fixture
- 6 LED colors: Warm White, Cool White, Green, Blue, Red, Amber

## ORDERING LOGIC:

LEDMD-XX-YY

### XX = LED COLOR

WW = Warm White      GR = Green  
 CW = Cool White      AM = Amber  
 BL = Blue              RD = Red

### YY = FIXTURE FINISH

AL = Aluminum      BK = Black  
 BZ = Bronze        SS = Stainless Steel  
 WH = White

## SPECIFICATIONS:

<b>Voltage</b>	12VDC
<b>Fixture Energy Rating</b>	12VDC, 45mA, 0.54 watts
<b>LED Color Temperature</b>	Warm White 3800K +/-200K, Cool White 7000K +/-200K
<b>LED Life</b>	Rated at 40,000 hours
<b>LED Colors</b>	Warm White, Cool White, Green, Blue, Red, Amber
<b>Cover Finish</b>	Aluminum, White, Bronze, Black, Stainless Steel
<b>Barrel Finish</b>	Aluminum, White, Bronze, Black, Stainless Steel
<b>Construction</b>	Both cover and barrel are die cast aluminum for corrosion protection, strength, weight, and consistency of finish.
<b>Lens</b>	Frosted Tempered Glass
<b>Wiring Options</b>	Up to 100 MiniDisc Lights per LED Driver by parallel wiring ("daisy chain") between fixtures. One wire completes chain. No custom cord required. NOTE: Use LW-18G-CL2 for all in-wall applications. Use LW-18G-BUR for all outdoor and burial applications.
<b>Dimming</b>	Dimmable with appropriate LED Magnetic Power Supply and dimmer. See instructions for details.
<b>Agency Approval</b>	ETL listed and labeled for wet, IC, ceiling, and direct burial applications.
<b>Warranty</b>	Two years aluminum or powder coated finish, 3 years stainless steel finish. See website for details.

<b>PROJECT:</b>	<b>TYPE:</b>
<b>NOTES:</b>	