


U.I. Lapp GmbH	PRODUCT INFORMATION	
	EPIC® H-A 3	29.11.2013

H-A inserts with screw termination up to 2.5 mm² wire cross section
The small H-A 3 / H-A 4 are used whenever there is minimal space.
Easy to service screw connection
Easy cable connection with strait cable entry in the contacts



Industrial machinery and plant engineering



Assembly time



Space requirement



Info

Robust power supply connector
Straight cable entry into the contacts

Application range

Machine and equipment manufacturing
Control engineering

Remark

Photographs are not to scale and do not represent detailed images of the respective products.


Technical Data

Rated voltage (V):	IEC: 400 V UL: 600 V CSA: 600 V
Rated impulse voltage:	4 kV
Rated current (A):	IEC: 23 A UL: 10 A CSA: 10 A
Contact resistance:	1.5 - 4 mohm
Contacts:	Copper alloy, hard silver-plated
Number of contacts:	3 + PE
Termination methods:	Screw termination: 0.5 - 2.5 mm ² (2.5 mm ² with conductor end sleeves depending on the crimping profile)
Cycle of mechanical operation:	100
Temperature range:	-40 °C to +100 °C, short-term up to +125 °C
VDE-tested:	Certified production control: VDE-REG. no.: B437 UL-tested: UL File Number: E75770
Degree of soiling:	3

Product Management	Document: LAPP_PRO331EN.pdf	1 / 3
--------------------	-----------------------------	-------



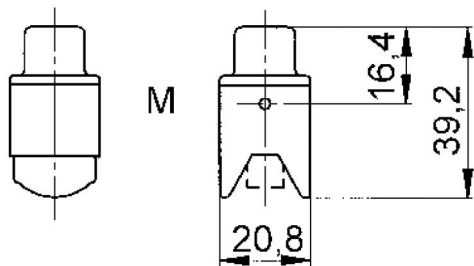
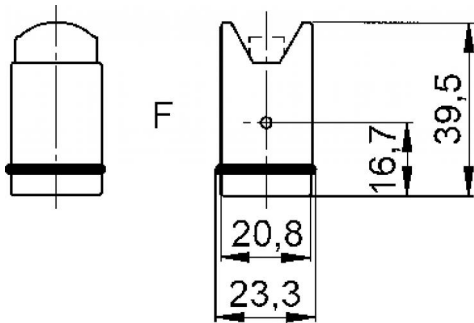
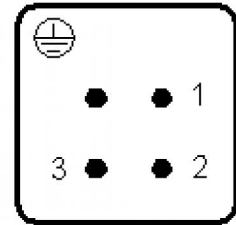
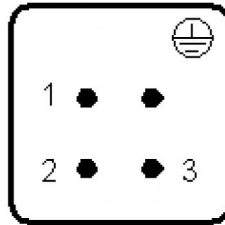
Part number	Article	Version	Contacts
H-A 3 screw termination			
10420000	H-A 3 SS	male	1 - 3
10421000	H-A 3 BS	female	1 - 3

U.I. Lapp GmbH	PRODUCT INFORMATION	 LAPP GROUP
EPIC® H-A 3		29.11.2013



M

F



Product Management	Document: LAPP_PRO331EN.pdf	3 / 3
--------------------	-----------------------------	-------