
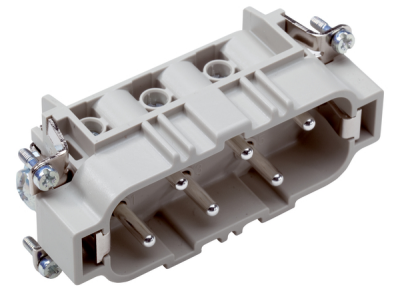


U.I. Lapp GmbH	<b>PRODUCT INFORMATION</b>	
	<b>EPIC® H-BS 6</b>	<b>14.11.2013</b>

Inserts for high currents.  
 High rating for currents up to 35 A  
 Screw termination up to a conductor cross section of 6 mm<sup>2</sup>



Industrial machinery and plant engineering



Robust



Temperature-resistant

#### Info

Standard insert for currents up to 35A

#### Application range

Plant engineering  
 Mechanical engineering  
 Drive systems

#### Remark

Photographs are not to scale and do not represent detailed images of the respective products.


#### Technical Data

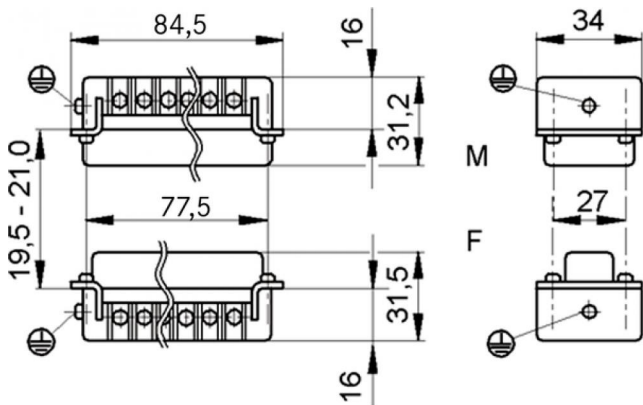
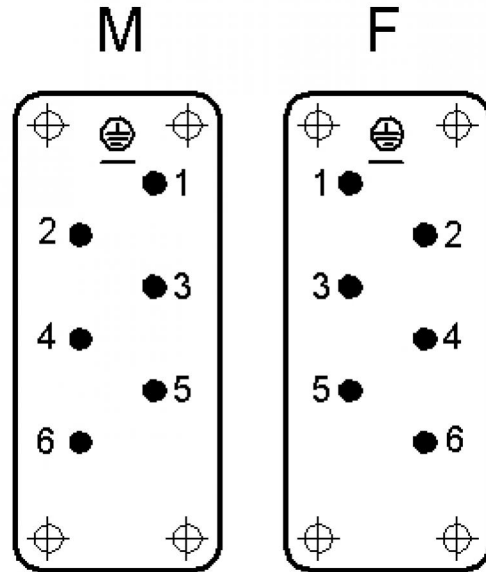
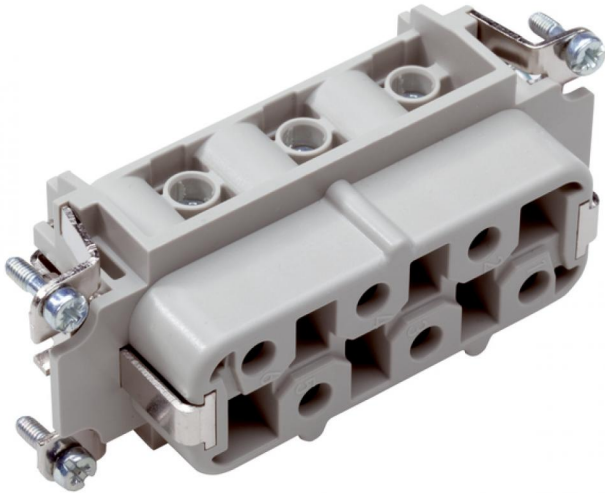
Rated voltage (V):	IEC: 500 V UL: 600 V CSA: 600 V Conductor - conductor: 690 V
Rated impulse voltage:	6 kV
Rated current (A):	IEC: 35 A UL: 35 A CSA: 35 A
Contact resistance:	< 2 mOhm
Contacts:	Copper alloy, hard silver-plated
Number of contacts:	6 + PE
Termination methods:	Screw termination: 0.5 - 6 mm <sup>2</sup>
Cycle of mechanical operation:	100
Temperature range:	-40 °C to +100 °C, short-term up to +125 °C
VDE-tested:	Certified production control: VDE-REG. no.: B437 UL-tested: UL File Number: E75770
Degree of soiling:	3

Product Management	Document: LAPP_PRO633EN.pdf	1 / 3
--------------------	-----------------------------	-------



Part number	Article	Version	Wire protection	Contacts	Pieces / PU
H-BS 6 screw termination					
10170000	H-BS 6 SS	male	yes	1 - 6	5
10171000	H-BS 6 BS	female	yes	1 - 6	5

U.I. Lapp GmbH	<b>PRODUCT INFORMATION</b>	
<b>EPIC® H-BS 6</b>		14.11.2013



Product Management	Document: LAPP_PRO633EN.pdf	3 / 3
--------------------	-----------------------------	-------