

U.I. Lapp GmbH	PRODUCT INFORMATION	
	EPIC® H-BE 6 Screw termination	14.11.2013

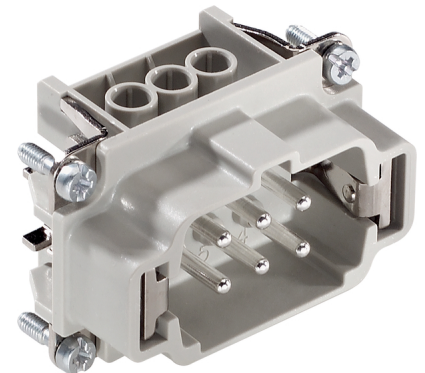
Standard inserts with screw termination, crimp termination and cage clamp termination
Standard inserts with screw, crimp and cage clamp termination
The EPIC® H-BE series is suitable for applications that require a reliable connection when working with high voltages and currents



Robust



Temperature-resistant



Info

Multifunctional insert for versatile applications
Screw, crimp and cage clamp version - freely combinable

Application range

Mechanical engineering
Light & sound technology
Plastics industry

Remark

Photographs are not to scale and do not represent detailed images of the respective products.

Technical Data

Rated voltage (V):	IEC: 500 V UL: 600 V CSA: 600 V
Rated impulse voltage:	6 kV
Rated current (A):	IEC: 16 A UL: 16 A CSA: 16 A
Contact resistance:	< 2 mOhm
Contacts:	Copper alloy, hard silver-plated
Number of contacts:	6 + PE
Termination methods:	Screw termination: 0.5 - 2.5 mm ²
Cycle of mechanical operation:	100
Temperature range:	-40 °C to +100 °C, short-term up to +125 °C
VDE-tested:	Certified production control: VDE-REG. no.: B437 UL-tested: UL File Number: E75770
Degree of soiling:	3

Product Management	Document: LAPP_PRO489EN.pdf	1 / 3
--------------------	-----------------------------	-------



EPIC® H-BE 6 Screw termination

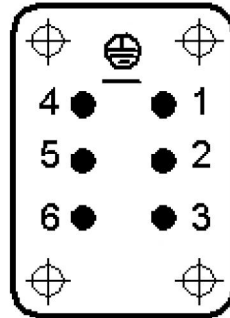
14.11.2013

Part number	Article	Version	Wire protection	Contacts	Pieces / PU
H-BE 6 screw termination					
10190000	H-BE 6 SS	male	yes	1 - 6	10
10191000	H-BE 6 BS	female	yes	1 - 6	10
10190100	H-BE 6 SS	male		1 - 6	10
10191100	H-BE 6 BS	female		1 - 6	10

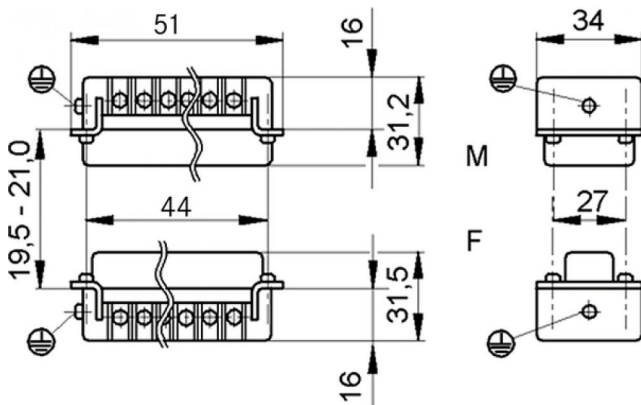
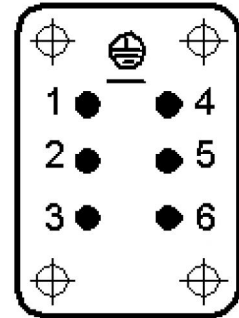
U.I. Lapp GmbH	PRODUCT INFORMATION	
EPIC® H-BE 6 Screw termination		14.11.2013



M



F



Product Management	Document: LAPP_PRO489EN.pdf	3 / 3
--------------------	-----------------------------	-------