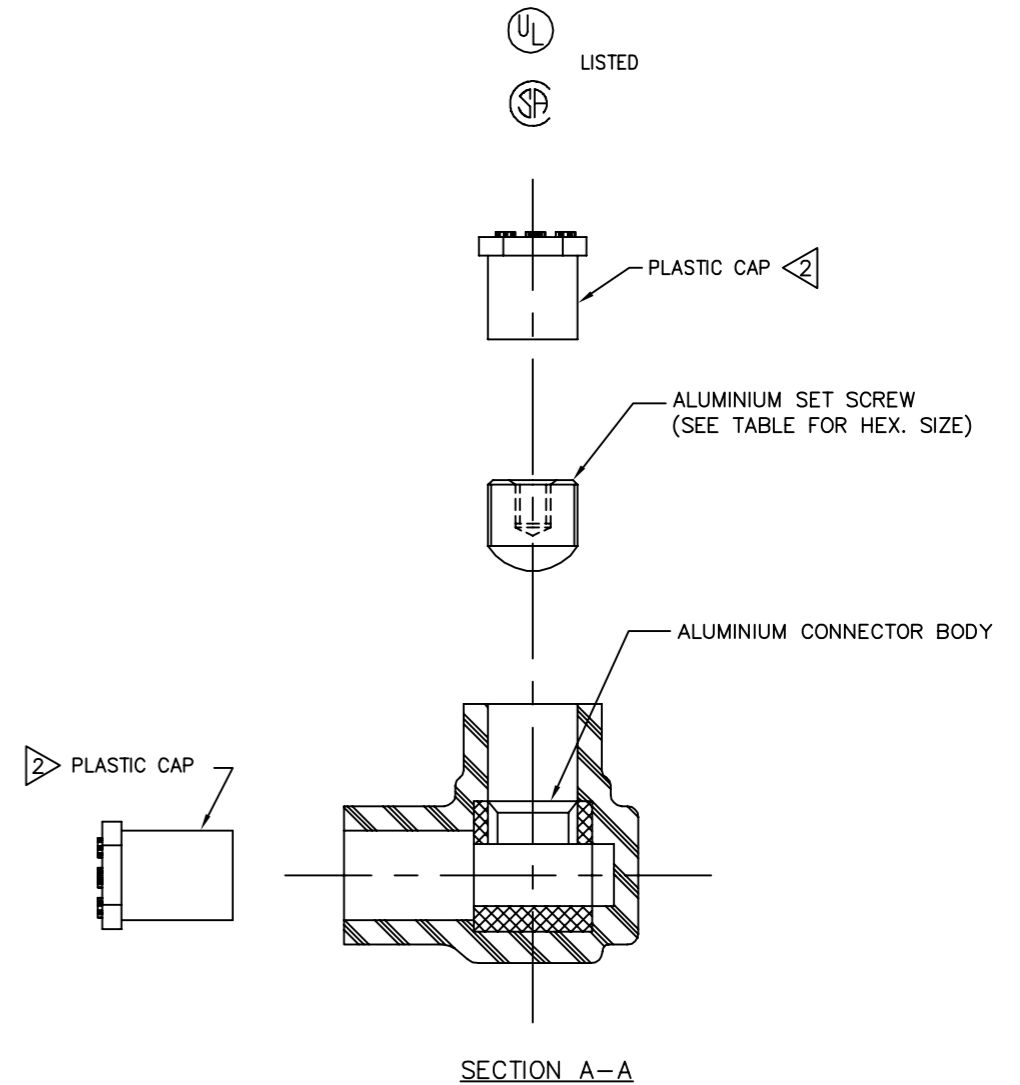
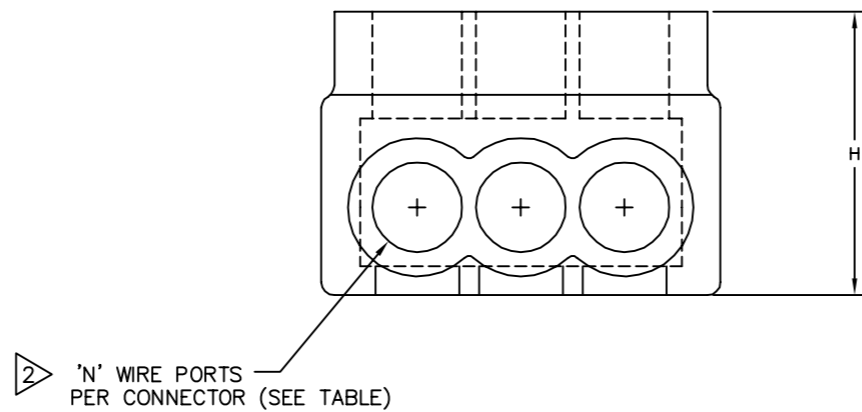
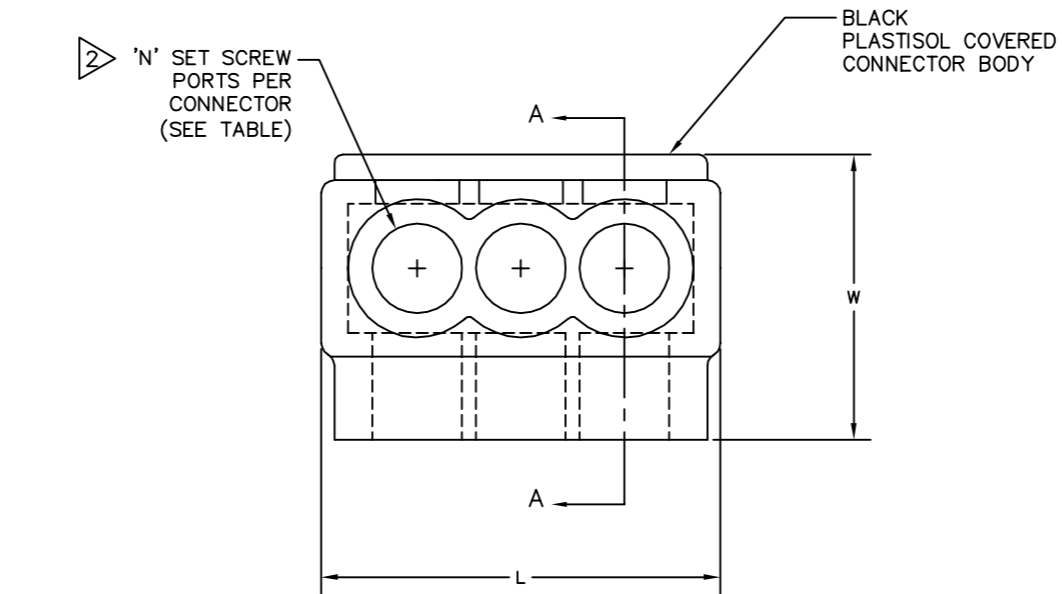


DRAWING NO. SD214514						
CATALOG NO.	WIRE RANGE (AWG/kcmil)	L	W	H	HEX. KEY	N
1PL2502	#10-250	2.28 [58]	2.07 [53]	2.13 [54]	5/16	2
1PL2503	#10-250	2.97 [75]	2.07 [53]	2.13 [54]	5/16	3
1PL2504	#10-250	3.91 [99]	2.07 [53]	2.13 [54]	5/16	4
1PL2505	#10-250	4.84 [123]	2.07 [53]	2.13 [54]	5/16	5
1PL2506	#10-250	5.78 [147]	2.07 [53]	2.13 [54]	5/16	6
1PL2508	#10-250	7.66 [195]	2.07 [53]	2.13 [54]	5/16	8

REV.	DATE	DESCRIPTION	ECO	BY	C'D.
E	12/14/12	TORQUE VALUE INCLUDED.	29771	PB	MA

FEATURES	BENEFITS
PLASTISOL COVERED AL6061-T6 BODY	SAVES TIME, LOWERS INSTALLATION COSTS, ELIMINATES TAPING.
OXIDE-INHIBITOR IS PRE-INSTALLED	INHIBITS MOISTURE AND CONTAMINANTS FROM ENTERING THE CONTACT AREA
RANGE-TAKING	REDUCES THE NUMBER OF CONNECTORS CARRIED IN INVENTORY



NOTES:

- THIS DRAWING TO BE INTERPRETED PER ASME Y14.5M.
- END CAPS INSTALLED ON WIRE PORTS AND SET SCREW PORTS.
- ALL CONNECTORS UL LISTED, CSA CERTIFIED FOR AL9CU, 90°C APPLICATIONS, UNLESS OTHERWISE NOTED.
- DIMENSIONS IN BRACKETS [] ARE IN MILLIMETERS ROUNDED OFF TO THE NEAREST MILLIMETER, UNLESS OTHERWISE NOTED, AND ARE FOR REFERENCE ONLY.
- TORQUE SET SCREWS TO 275 IN/LB.

TO ORDER BURNDY® PRODUCTS CALL		UV BLACK COVERED DISTRIBUTION CONNECTORS	
UNITED STATES: 1-800-346-4175 (LONDONDERRY, NH)		ITEM NO: N/A	
CANADA: 1-800-361-6975 (QUEBEC) 1-800-387-6487 (ALL OTHER PROVINCES)		CAT NO: 1PL250-SERIES	
FOR PRODUCT INFO: http://www.burndy.com		SCALE: N/A	
		DRAWN BY: D RAJKUMAR 4/24/02	
		CHECKER: K HENRY 5/23/02	
		DSN APPVL: G DITROIA 3/6/02	
		MFG APPVL: T BONINA 2/27/02	
		QC APPVL: J BRODEUR 3/5/02	
		MKT APPVL: A ZWIT 2/27/02	
		DRAWING NO	
		SD214514	
		REV	
		E	
		SHEET 10 OF 13	

