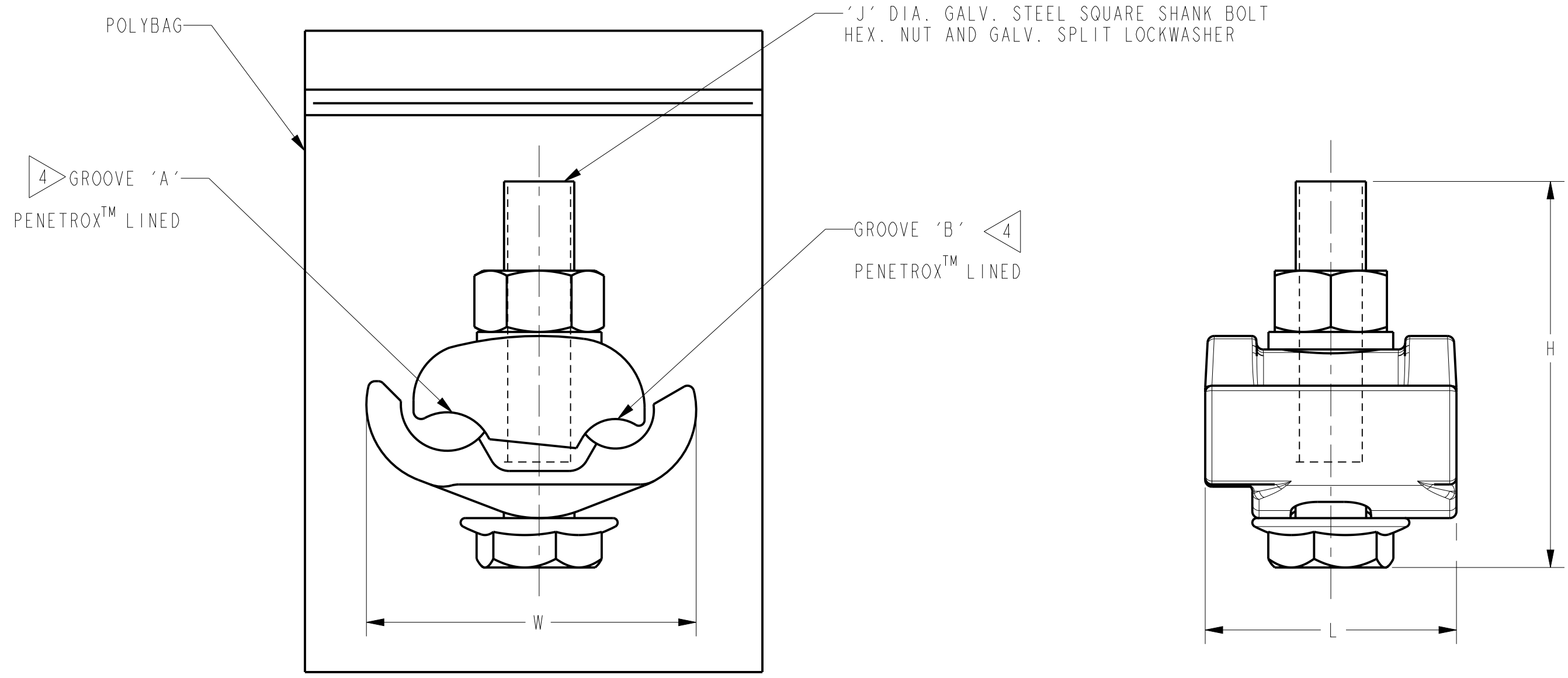


REV	DATE	DESCRIPTION	ECO	BY	C'H'K.
D	01/06/2014 00:00:00 AM	DRAWING RELEASED	34185	YM	MB

CATALOG NUMBER	GROOVE A						GROOVE B		DIMENSIONS				WRENCH SIZE (CROSSFLATS)	TORQUE IN-LB
	ALUM & COPPER 3	ACSR, AAAC, 5005 3	STRAIGHT ARMOR ROD		PERFORMED ARMOR ROD		ALUM & COPPER 3	ACSR AAAC, 5005 3	L	H	J	W		
			ACSR	ALUMINUM	ACSR	ALUMINUM								
UC25R2RS	8 SOL. - 1/0 STR.	6 - 1/0	----	-----	----	----	8 SOL. - 2 STR.	6 - 2	1.12 [28]	1.68 [43]	5/16 - 18	1.47 [37]	1/2	180
UC25RS	8 SOL. - 1/0 STR.	6 - 1/0	----	-----	----	----	8 SOL. - 1/0 STR.	6 - 1/0	1.34 [34]	1.96 [50]	3/8 - 16	1.73 [44]	9/16	240
UC28RS	1/0 STR. - 4/0 STR.	1/0 - 4/0	6 - 3	2(7) - 2(7)	6 - 4	4(7) - 3(7)	8 SOL. - 1/0 STR. 2	6 - 1/0	1.38 [35]	2.33 [59]	3/8 - 16	1.87 [47]	9/16	240
UC32RS	1/0 STR. - 397.5	1/0 - 336.4(26-7)	6 - 1/0	2(7) - 1/0(7)	6 - 1/0	4(7) - 2/0(7)	6 SOL. - 2/0 STR.	6 - 1/0	1.50 [38]	2.33 [59]	3/8 - 16	2.25 [57]	9/16	240
UC33RS	4/0 STR. - 400	4/0 - 336.4(30-7)	3 - 2/0	2(7) - 1/0(7)	6 - 4/0	3(7) - 2/0(7)	6 SOL. - 2/0 STR.	6 - 2/0	1.75 [44]	2.77 [70]	1/2 - 13	2.21 [56]	3/4	480



NOTES:

1. MATERIAL: CAST ALUM. ALLOY.
- 2 MAXIMUM RECOMMENDED COMBINATIONS:
4/0 ALUM. OR ACSR RUN - #2 STR. COPPER TAP.
- 3 ACCOMMODATES COMPRESSED CONDUCTORS WITHIN DIA RANGE.
- 4 DO NOT REMOVE PENETROX™ FROM CONNECTOR GROOVES. SCRATCH BRUSH ALUM. CONDUCTORS BEFORE INSTALLING CONNECTOR.
5. DIMENSIONS IN BRACKETS [] ARE IN MILLIMETERS, ROUNDED OFF TO THE NEAREST MILLIMETER, UNLESS OTHERWISE SPECIFIED, AND ARE FOR REFERENCE ONLY.

REFERENCE: SC037822-01

TO ORDER BURNDY® PRODUCTS CALL
 UNITED STATES:
 1-800-346-4175 (LONDONDERRY, NH)
 CANADA:
 1-800-361-6975 (QUEBEC)
 1-800-387-6487 (ALL OTHER PROVINCES)
 FOR PRODUCT INFO: <http://www.burndy.com>

TAPIT™	
ITEM NO:	N/A
CAT. NO:	UC-RS, UC-R-RS (TABLE)
DRAWN BY:	J.A.A 08/16/1964
CHECKER:	M.J.M 09/25/1964
DSN APPVL:	M.B. 10/01/1964
MFG APPVL:	-- --
QA APPVL:	D.VARIO 06/27/1996
MKT APPVL:	R.PELLITIER 06/04/1996
PROD FAM:	--
PROJECT #:	--
DOCUMENT TYPE:	Sales
REL LEVEL:	Released
SCALE:	1:1
DRAWING NO	SD057342-01
REV	D
SHEET	1 OF 1

REV: PE0200