

# Rail Mount Fuseholders and Circuit Breakers



**NDNF1-WH**

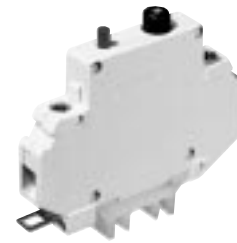
**Ratings:** 30A, 600V; UL/CSA  
**Number of Poles:** 1  
**Fuse Size:** 1<sup>3</sup>/<sub>32</sub>" × 1<sup>1</sup>/<sub>2</sub>"  
 (KTK-R, FNQ-R or LP-CC).  
**Circuit Jumper:** JF1, 2 circuits  
**Wire Size:** AWG #8-22 CU  
**Mounting Options:** 35mm DIN rail, C-rail  
**Marking Tape:** MT12-1/2  
**Torque Rating:** 18 in/lb max.  
**Operating Temperature:** 105°C  
**NDNF1 Colors:** WH - White  
**Fuse Pullers (Optional):**  
 PF1  
 Lighted neon or incandescent – LPF-(Voltage rating)  
 LPF1-24  
 LPF1-120  
 LPF1-120-C  
 LPF1-220  
 LPF1-440



**NDNLFD1**

**Ratings:**  
 NDND1: 30A, 600V; UL/CSA (non-fused)  
 NDNFD1: 15A, 600V/CSA (fused)  
 NDNLFD1\*: 15A, 600V (fused)  
**Number of Poles:** 1  
**Fuse Size:** 1/4" × 1 1/4"  
 (Buss® AGC, MDL or equivalent.)  
**Circuit Jumper:** JF1, 2 circuits  
**Wire Size:** AWG #8-22 CU  
**Mounting Options:** 35mm DIN rail, C-rail  
**Marking Tape:** MT12-1/2  
**Torque Rating:** 18 in/lb max.  
**Operating Temperature:** 105°C  
**Extension:** WH - White  
 \*WH24 - 24V White  
 (Only available with NDNLFD1)

CE



**UB Series**

**Ratings:** .5 - 15A, 250VAC/65VDC; UL\*/CSA/VDE  
 \*For 9A - 15A units, UL voltage ratings: 125VAC/65VDC  
**Number of Poles:** 1  
**Max. Interrupt Cap.:** 200A, but not over 100 times rated current.  
**Life:** 4,000 cyc. 200% rated current; 6,000 cyc. rated current  
**Dielectric Strength:** 1,500 VAC  
**Insulation Resist:** 100 Megohms  
**Mounting Options:** 35mm DIN rail, C-rail (Adapter required for C-rail, Part No. UBA-CR).  
**Weight:** 3.2 oz.

**Part Numbering System**

**UB** □ □ □ □ - **BN**

Series	Amperage
	001 - 150
	(.1A - 15A)

