



Mark 10 Powerline

MARK 10 POWERLINE REZ1T42M2BS35M

For companies looking to make their fixed-output linear T8, 4-pin CFL, and T5/HO fluorescent systems more cost effective and sustainable, Mark 10 Powerline ballasts provide an easy solution without the need for additional control leads. Simply, (1) replace the ballast, (2) replace the switch, (3) dim the lights, that is all it takes. It's that easy to bring the convenience and flexibility of fluorescent dimming to conference rooms, private offices, auditoriums, architectural cove lighting – anywhere dimming is required.

Product data

General Information	
Lamp Type	CFTR42W/GX24Q
Number Of Lamps	1 piece/unit
Ballast Type	Dimmable Fluorescent
Base Model	REZ1T42M2BS
Suitable For Outdoor Use	Yes
Automatic Restart	Yes
Operating and Electrical	
Input Voltage	120 V
Input Frequency	60 Hz
Total Harmonic Distortion USA	10 %
Ignition Method	Programmed Start
Crestfactor (Nom)	1.6
Ignition Time (Nom)	1.5 s
Ballast Factor (Max)	1
Ballast Factor (Min)	0.05
Power Factor (Nom)	0.98
Input Current (Nom)	0.41 A
Input Power (Max)	49 W

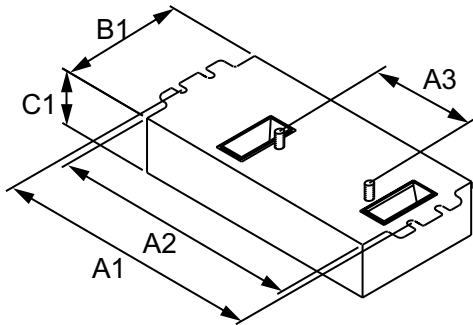
Input Power (Min)	10 W
Rated Lamp Power	42 W
Wiring	
Color Input Terminals	Black and White
Color Output Terminals	RED & BLU
Wire Striplength	0.375 mm
Control Wire Gauge	NA
Lamp Connection	Series
Wire Length By Color	No wires
Wire Gauge (Nom)	18AWG mm
Wire Type	Solid
Remote Wiring Configuration Allowed	No
Tandem Wiring Configuration Allowed	No
Through Wiring Configuration Allowed	No
Max Ballast-Lamp Distance Remote Wiring	No Remote
Max Ballast-Lamp Distance Tandem Wiring	NA
Max Ballast-Lamp Distance Through Wiring	NA
Connector Type	Poke-In

Mark 10 Powerline

Temperature	
T-Case Maximum (Nom)	70 °C
Mechanical and Housing	
Housing Material	Metal
Housing	M2
Housing Dimensions	4.98" x 3.0" x 1.29"
Approval and Application	
EMC Immunity Standard	FCC Consumer
Approval Marks	CSA certificate UL certificate CEC Listing RoHS Compliant
Hum And Noise Level	A

UL Recognized	No
Product Data	
Order product name	MARK 10 POWERLINE REZ1T42M2BS35M
EAN/UPC - Product	781087114490
Order code	913700507851
Numerator - Quantity Per Pack	1
Numerator - Packs per outer box	16
Material Nr. (12NC)	913700507851
Net Weight (Piece)	0.305 kg

Dimensional drawing



ELE DIM BALLAST (1) 42W CFL (4-PIN) 120V

Product	A1	A2	A3	B1	C1
MARK 10 POWERLINE REZ1T42M2BS35M	4.55 in	4.20 in	2.00 in	3.00 in	1.29 in

