

FEATURES & SPECIFICATIONS

INTENDED USE — Specification premium, high performance, static T5 luminaires provide general illumination for recessed applications; ideal for restricted plenum spaces. Certain airborne contaminants can diminish integrity of acrylic. [Click here for Acrylic Environmental Compatibility table for suitable uses.](#)

Designed specifically for use with high-efficiency T5 lamps, electronic ballasts and rotary sockets.

CONSTRUCTION — Smooth hemmed sides and smooth, inward formed end flanges for easy handling. Lighter weight fixture allows safe, easy installation.

Standard steel door frame has superior structural integrity with premium extruded appearance and precision flush mitered corners. Steel door allows easy lens replacement without frame disassembly (for lenses up to .156" thick). Powder-painted, steel latches provide easy, secure door closure.

Superior mechanical light seal requires no foam gasketing. Integral T-bar clips secure fixture to T-bar system. Housing formed from cold-rolled steel. Acrylic shielding material 100% UV stabilized. No asbestos is used in this product.

US PATENTS: 6,210,025; 6,231,213; 6,213,625; 2,288,471.

Finish: Five-stage iron-phosphate pretreatment ensures superior paint adhesion and rust resistance. Painted parts finished with highly reflective matte white enamel.

OPTICS — A12 lens features reverse apex technology for superior lamp obscuration and improved visual comfort.

ELECTRICAL — Standard ballast is electronic programmed rapid start, thermally protected, resetting, Class P, HPF, non-PCB, UL Listed, CSA certified ballast, universal voltage and sound rated A.

Luminaire is suitable for damp locations. AWM, TFN or THHN wire used throughout, rated for required temperatures.

LISTING — Standard: UL. Optional: Canada — CSA or cUL; Mexico — NOM.

WARRANTY — 1-year limited warranty. Complete warranty terms located at: www.acuitybrands.com/CustomerResources/Terms_and_conditions.aspx

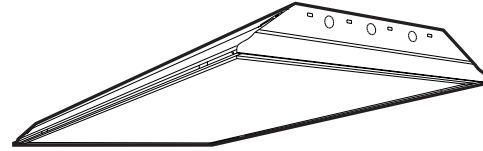
Note: Actual performance may differ as a result of end-user environment and application.

Specifications subject to change without notice.

Catalog Number
Notes
Type

Specification Premium T5 Troffer

SP5 2'X4'



T5 or T5HO Lamps
2, 3 or 4 lamps

Specifications

Length: 48 (121.8)

Width: 24 (61.0)

Depth: 3-11/16 (9.4)

Weight: 22 lbs (9.9 kg)

All dimensions are inches (centimeters).

ORDERING INFORMATION

For shortest lead times, configure products using **bolded options**.

Example: 2SP5 G 2 28T5 A12 MVOLT GEB95

Series	Trim Type	Number of lamps	Lamp type	Door frame	Diffuser type	Voltage
2SP5	G Grid	2	28T5 28W T5 (46")	(blank) Flush steel, white	A12 #12 pattern acrylic, reverse apex	MVOLT²
	F Overlapping flanged	3	54T5HO 54W T5HO (46") ¹	FN Flush aluminum, natural	RA125 #12 pattern acrylic, reverse apex 0.125" thick	120
		4		FM Flush aluminum, matte black	A12125 #12 pattern acrylic 0.125" thick	277
				FW Flush aluminum, white	A19 #19 pattern acrylic 0.156" thick	347 ³
				RN Regressed aluminum, natural		others available
				RM Regressed aluminum, matte black		
				RW Regressed aluminum, white		

Ballast	Options
GEB95 0.95 ballast factor ^{4,5}	1/3 One three-lamp ballast (T5HO only) LP841 4100K
GEB10PS 1.00 ballast factor	1/4 One four-lamp ballast (T5HO only) PWS1836 6' prewire, 3/8" dia., 18-gauge, 3 wires
GEB95S 0.95 ballast factor, step-dimming ^{4,5}	EL14 Emergency battery pack ⁶ PWS1846 6' prewire, 3/8" dia., 18-gauge, 4 wires ⁸
GEB115 1.15 ballast factor ^{4,5}	GLR Internal fast-blow fuse ⁷ JP Palletized and stretch-wrapped without individual cartons
GEB115S 1.15 ballast factor, step dimming ^{4,5}	GMF Internal slow-blow fuse ⁷ CSA CSA Certified
	LP835 3500K NOM NOM Certified
	LPM835P Premiere 3500K ⁵

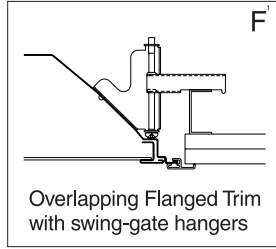
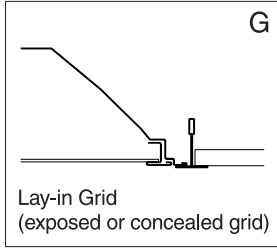
NOTES:

- For T5HO applications, use GEB10PS.
- MVOLT (120-277 volts), 50-60HZ.
- For 347V, use GEB10PS.
- Available with two- or four-lamp configurations only.
- 28T5 lamps only.
- Must use 1/3 or 1/4 with three- or four-lamp 54T5HO configurations.
- Must specify voltage: 120V or 277V.
- Use with GEB95S or GEB115S.

SP5 2' x 4' Static T5 Troffer

MOUNTING DATA

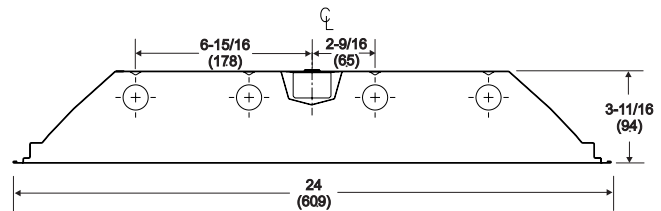
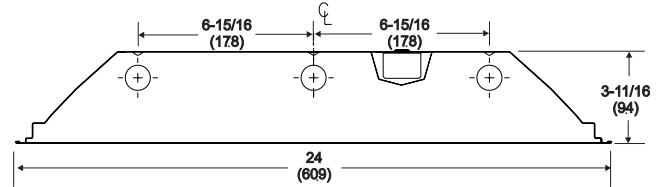
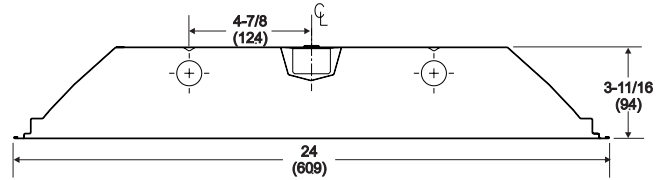
Continuous row mounting of flanged units requires CRE and CRM trim options (see Options).



NOTE:

- 1 Recommended rough-in dimensions for F-trim fixtures 24"x48". (Tolerance is +1/4"-0".) Swing-gate range 1-3/16" to 3-15/16". Swing-gate span 23-3/8" to 26-11/16". Fixture swing-gate points require additional 9/16" over nominal fixture height.

DIMENSIONS



PHOTOMETRICS

Calculated using the zonal cavity method in accordance with IESNA LM41 procedure. Floor reflectances are 20%. Lamp configurations shown are typical. Full photometric data on these and other configurations available upon request.

TEST NO: LTL16641
LUMINAIRE CATALOG NO.: 2SP5 3 28T5 A12125
LUMENS PER LAMP: 2730
Luminaire Efficiency: 84.0%

TEST NO: LTL16642
LUMINAIRE CATALOG NO.: 2SP5 2 28T5 A12125
LUMENS PER LAMP: 2730
Luminaire Efficiency: 82.8%

RCR	pf	pc	Coefficients of Utilization										
			80%			70%			50%				
			70%	50%	30%	10%	50%	30%	10%	50%	30%	10%	
0	100	100	100	100	98	98	98	93	93	93			
1	92	88	85	82	86	83	81	83	80	78			
2	84	78	73	68	76	72	67	73	69	66			
3	77	69	63	58	68	62	57	65	60	56			
4	71	62	55	49	61	54	49	59	53	48			
5	66	55	48	43	55	48	43	53	47	42			
6	61	50	43	38	49	43	38	48	42	37			
7	57	46	39	34	45	38	33	44	38	33			
8	53	42	35	30	41	35	30	40	34	30			
9	49	38	32	27	38	31	27	37	31	27			
10	46	35	29	25	35	29	25	34	28	25			

Zonal Lumen Summary			
Zone	Lumens	% Lamp	% Fixture
0° - 30°	2146.2	26.2	31.2
0° - 40°	3524.8	43.0	51.2
0° - 60°	5852.8	71.5	85.1
0° - 90°	6878.8	84.0	100.0
90° - 180°	0.0	0.0	0.0
0° - 180°	6878.8	84.0	100.0

RCR	pf	pc	Coefficients of Utilization										
			80%			70%			50%				
			70%	50%	30%	10%	50%	30%	10%	50%	30%	10%	
0	99	99	99	99	96	96	96	92	92	92			
1	91	87	84	81	85	82	80	82	79	77			
2	83	77	72	67	75	71	66	72	68	65			
3	76	68	62	57	67	61	56	64	59	55			
4	70	61	54	49	60	53	48	58	52	48			
5	65	55	48	42	54	47	42	52	46	42			
6	60	49	42	37	49	42	37	47	41	37			
7	56	45	38	33	44	38	33	43	37	33			
8	52	41	34	30	40	34	29	39	33	29			
9	49	38	31	27	37	31	27	36	30	26			
10	45	35	28	24	34	28	24	34	28	24			

Zonal Lumen Summary			
Zone	Lumens	% Lamp	% Fixture
0° - 30°	1392.0	25.5	30.8
0° - 40°	2307.0	42.3	51.0
0° - 60°	3852.1	70.6	85.2
0° - 90°	4523.1	82.8	100.0
90° - 180°	0.0	0.0	0.0
0° - 180°	4523.1	82.8	100.0