

FEATURES & SPECIFICATIONS

INTENDED USE — Specification premium, high performance, static T8 luminaires provide general illumination for recessed applications; ideal for restricted plenum spaces. **Certain airborne contaminants can diminish integrity of acrylic.** [Click here for Acrylic Environmental Compatibility table for suitable uses.](#)

ATTRIBUTES — Designed exclusively for use with T8 lamps, electronic ballasts and sockets.

CONSTRUCTION — Smooth hemmed sides and smooth, inward formed end flanges for safe handling. Lighter weight fixture allows safe, easy installation.

Standard steel door frame has superior structural integrity with premium extruded appearance and precision flush mitered corners. Steel door allows easy lens replacement without frame disassembly (for lenses up to .156" thick). Powder-painted, steel latches provide easy, secure door closure.

Superior mechanical light seal requires no foam gasketing. Integral T-bar clips secure fixture to T-bar system. Housing formed from cold-rolled steel. Acrylic shielding material 100% UV stabilized. No asbestos is used in this product.

US PATENTS: 6,210,025; 6,231,213; 6,213,625; 2,288,471.

FINISH — Five-stage iron-phosphate pretreatment ensures superior paint adhesion and rust resistance. Painted parts finished with highly reflective matte white enamel.

OPTICAL — A12 lens features reverse apex technology for superior lamp obscuration and improved visual comfort.

ELECTRICAL — Standard ballast is electronic, thermally protected, resetting, Class P, HPF, non-PCB, UL Listed, CSA certified ballast, universal voltage and sound rated A.

Luminaire is suitable for damp locations. AWM, TFN or THHN wire used throughout, rated for required temperatures.

LISTINGS — Standard: UL. Optional: Canada — CSA or cUL; Mexico — NOM.

WARRANTY — 1-year limited warranty. Complete warranty terms located at www.acuitybrands.com/CustomerResources/Terms_and_conditions.aspx

Note: Actual performance may differ as a result of end-user environment and application.

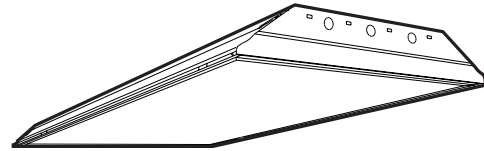
Specifications subject to change without notice.

| |
|----------------|
| Catalog Number |
| Notes |
| Type |

Specification Premium T8 Troffer

SP8 2'X4'

2, 3, 4 or 6 Lamps
T8



Specifications

Length: 48 (1218)

Width: 24 (609)

Depth: 3-11/16 (94)

Weight: 22 lbs (9.9 kg)



All dimensions are inches (millimeters).

ORDERING INFORMATION

For shortest lead times, configure products using **bolded options**.

Example: 2SP8 G 3 32 A12 MVOLT 1/3 GEB10IS

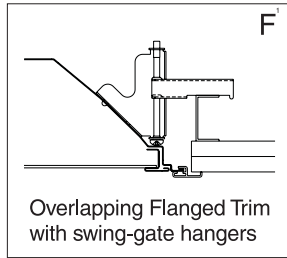
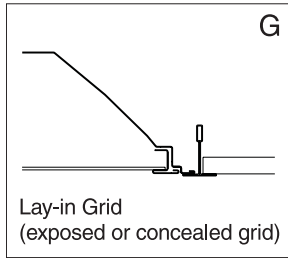
| 2SP8 | | | | | | | |
|--------------|---|---|------------------------|---|--|--|--|
| Series | Trim type | Number of lamps | Lamp type | Door frame | Diffuser type | Voltage | Options |
| 2SP8 2' wide | G Grid F Overlapping flanged | 2 3 4 6 Not included | 32 32W T8 (48") | (blank) Flush steel, white | A12 #12 pattern acrylic | 120 277 347 ¹ MVOLT² Others available | 1/4 One 4-lamp ballast 1/3 One 3-lamp ballast GEB10IS Electronic ballast, <10% THD, instant start GEB10PS Electronic ballast, <10% THD, programmed start GEB10RS Electronic ballast, <10% THD, rapid start EL Emergency battery pack (nominal 500 lumens) ³ EL14 Emergency battery pack (nominal 1400 lumens) ³ GLR Internal fast-blow fuse ⁴ GMF Internal slow-blow fuse ⁴ LST Tandem-wired fixture pairs (shared ballasts) PWS1836 6' prewire, 3/8" dia., 18-gauge, 1 circuit PWS1846 6' prewire, 3/8" dia., 18-gauge, 2 circuit LP_ Lamped, specify lamp type and color JP Palletized and stretch-wrapped without individual cartons; grid trim only CSA CSA Certified NOM NOM Certified CP Chicago Plenum |
| | | | | FN Flush aluminum, natural | A12125 #12 pattern acrylic, .125" thick | | |
| | | | | FM Flush aluminum, matte black | RA125 #12 pattern acrylic, .125" thick, reverse apex | | |
| | | | | FW Flush aluminum, white | A19 #19 pattern acrylic, .156" thick | | |
| | | | | RN Regressed aluminum, natural | A15 #15 pattern acrylic, .2" thick | | |
| | | | | RM Regressed aluminum, matte black | PC1S 1/2" x 1/2" x 1/2" plastic cube louver, silver | | |
| | | | | RW Regressed aluminum, white | PC2S 1-1/2" x 1-1/2" x 1" plastic cube louver, silver w/ flange | | |
| | | | | | PC3S 3/4" x 3/4" x 1/2" plastic cube louver, silver | | |

NOTE:

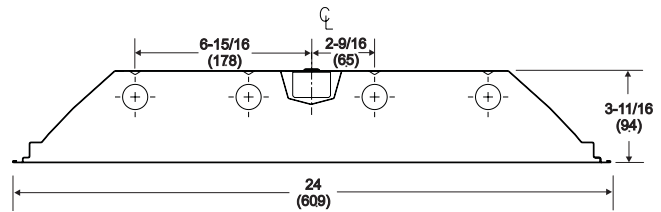
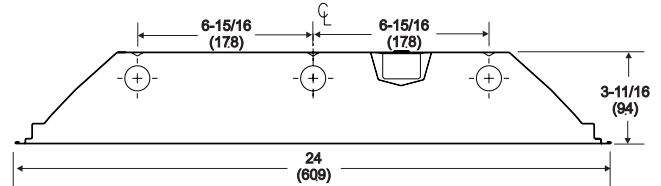
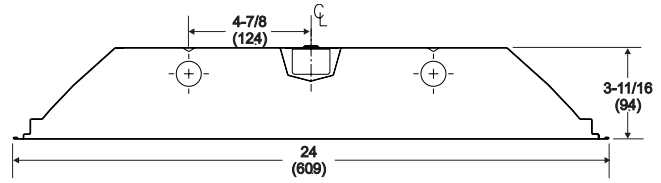
- Not available with GEB10PS.
- MVOLT standard for 120-277V applications, 50-60 hz operation. Some options require voltage specified.
- Must order 2/3 or 1/41/2 ballast configuration with 6 lamp units.
- Must specify voltage 120 or 277V.

MOUNTING DATA

Continuous row mounting of flanged units requires CRE and CRM trim options (see Options).



DIMENSIONS



NOTE:

1 Recommended rough-in dimensions for F-trim fixtures 24"x48". (Tolerance is +1/4"-0".) Swing-gate range 1-3/16" to 3-15/16". Swing-gate span 23-3/8" to 26-11/16". Fixture swing-gate points require additional 9/16" over nominal fixture height.

PHOTOMETRICS

Calculated using the zonal cavity method in accordance with IESNA LM41 procedure. Floor reflectances are 20%. Lamp configurations shown are typical. Full photometric data on these and other configurations available upon request.

2SP8 2 32 A12*

Report LTL 7525

Lumens per lamp - 2850 – Lum. eff. - 85.5%

S/MH (along) 1.3 (across) 1.4

Coefficient of Utilization

| Ceiling Wall | 80% | | | 70% | | | 50% | | |
|-----------------|-----|-----|-----|-----|-----|-----|-----|-----|-----|
| | 70% | 50% | 30% | 70% | 50% | 30% | 50% | 30% | 10% |
| 0 | 102 | 102 | 102 | 99 | 99 | 99 | 95 | 95 | 95 |
| 1 | 94 | 90 | 87 | 92 | 88 | 85 | 85 | 82 | 80 |
| 2 | 86 | 80 | 74 | 84 | 78 | 73 | 75 | 71 | 68 |
| 3 | 79 | 71 | 64 | 77 | 70 | 64 | 67 | 62 | 58 |
| 4 | 73 | 63 | 56 | 71 | 62 | 56 | 60 | 55 | 50 |
| 5 | 67 | 57 | 50 | 66 | 56 | 49 | 54 | 48 | 44 |
| 6 | 62 | 52 | 44 | 61 | 51 | 44 | 49 | 43 | 39 |
| 7 | 58 | 47 | 40 | 57 | 46 | 40 | 45 | 39 | 34 |
| 8 | 54 | 43 | 36 | 53 | 42 | 36 | 41 | 35 | 31 |
| 9 | 51 | 39 | 33 | 49 | 39 | 33 | 38 | 32 | 28 |
| 10 | 47 | 36 | 30 | 46 | 36 | 30 | 35 | 29 | 25 |

Zonal Lumens Summary

| Zone | Lumens | %Lamp | %Fixture |
|--------|--------|-------|----------|
| 0-30 | 1541 | 27.0 | 31.6 |
| 0-40 | 2571 | 45.1 | 52.7 |
| 0-60 | 4192 | 73.5 | 86.0 |
| 0-90 | 4874 | 85.5 | 100.0 |
| 90-180 | 0 | 0 | 0 |
| 0-180 | 4874 | 85.5 | 100.0 |

2SP8 3 32 A12*

Report LTL 7492

Lumens per lamp - 2850 – Lum. eff. - 83.6%

S/MH (along) 1.3 (across) 1.4

Coefficient of Utilization

| Ceiling Wall | 80% | | | 70% | | | 50% | | |
|-----------------|-----|-----|-----|-----|-----|-----|-----|-----|-----|
| | 70% | 50% | 30% | 70% | 50% | 30% | 50% | 30% | 10% |
| 0 | 100 | 100 | 100 | 97 | 97 | 97 | 93 | 93 | 93 |
| 1 | 92 | 88 | 85 | 90 | 86 | 83 | 83 | 80 | 78 |
| 2 | 84 | 78 | 73 | 82 | 77 | 72 | 74 | 70 | 66 |
| 3 | 78 | 70 | 63 | 76 | 68 | 62 | 66 | 61 | 57 |
| 4 | 72 | 62 | 55 | 70 | 61 | 55 | 59 | 54 | 49 |
| 5 | 66 | 56 | 49 | 64 | 55 | 49 | 53 | 48 | 43 |
| 6 | 61 | 51 | 44 | 60 | 50 | 43 | 49 | 43 | 38 |
| 7 | 57 | 46 | 39 | 56 | 46 | 39 | 44 | 38 | 34 |
| 8 | 53 | 42 | 36 | 52 | 42 | 35 | 41 | 35 | 31 |
| 9 | 50 | 39 | 32 | 49 | 38 | 32 | 38 | 32 | 28 |
| 10 | 47 | 36 | 30 | 46 | 36 | 29 | 35 | 29 | 25 |

Zonal Lumens Summary

| Zone | Lumens | %Lamp | %Fixture |
|--------|--------|-------|----------|
| 0-30 | 2319 | 27.1 | 32.4 |
| 0-40 | 3833 | 44.8 | 53.6 |
| 0-60 | 6164 | 72.1 | 86.2 |
| 0-90 | 7147 | 83.6 | 100.0 |
| 90-180 | 0 | 0 | 0 |
| 0-180 | 7147 | 83.6 | 100.0 |

2SP8 4 32 A12*

Report LTL 7526

Lumens per lamp - 2850 – Lum. eff. - 81.5%

S/MH (along) 1.2 (across) 1.4

Coefficient of Utilization

| Ceiling Wall | 80% | | | 70% | | | 50% | | |
|-----------------|-----|-----|-----|-----|-----|-----|-----|-----|-----|
| | 70% | 50% | 30% | 70% | 50% | 30% | 50% | 30% | 10% |
| 0 | 97 | 97 | 97 | 95 | 95 | 95 | 91 | 91 | 91 |
| 1 | 90 | 86 | 83 | 87 | 84 | 81 | 81 | 78 | 76 |
| 2 | 82 | 76 | 71 | 80 | 75 | 70 | 72 | 68 | 65 |
| 3 | 76 | 68 | 62 | 74 | 67 | 61 | 64 | 59 | 55 |
| 4 | 70 | 61 | 54 | 68 | 60 | 53 | 58 | 52 | 48 |
| 5 | 64 | 55 | 48 | 63 | 54 | 47 | 52 | 46 | 42 |
| 6 | 60 | 50 | 43 | 58 | 49 | 42 | 47 | 42 | 37 |
| 7 | 56 | 45 | 38 | 54 | 44 | 38 | 43 | 37 | 33 |
| 8 | 52 | 41 | 35 | 51 | 41 | 34 | 40 | 34 | 30 |
| 9 | 48 | 38 | 32 | 47 | 38 | 31 | 37 | 31 | 27 |
| 10 | 46 | 35 | 29 | 44 | 35 | 29 | 34 | 28 | 25 |

Zonal Lumens Summary

| Zone | Lumens | %Lamp | %Fixture |
|--------|--------|-------|----------|
| 0-30 | 3029 | 26.6 | 32.6 |
| 0-40 | 4999 | 43.8 | 53.8 |
| 0-60 | 8017 | 70.3 | 86.3 |
| 0-90 | 9292 | 81.5 | 100.0 |
| 90-180 | 0 | 0 | 0 |
| 0-180 | 9292 | 81.5 | 100.0 |

* With reverse apex lens