

switch disconnecter 3-pole with door drive 8UC7 handle ti-
grey/bl.green basic masking frame light gray

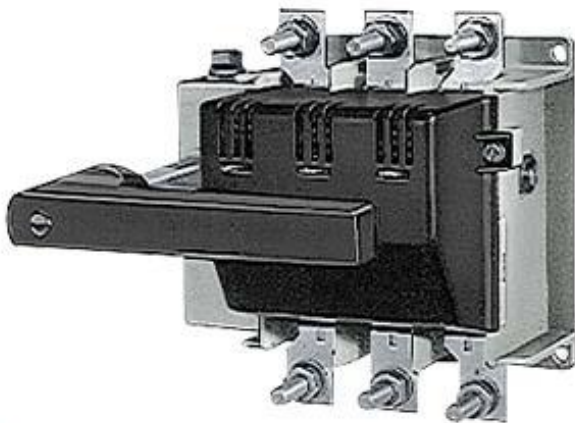


Figure similar

Model	
Product brand name	SETRON
Product designation	Switch Disconnecter 3KE
version	complete version with door coupling rotary operating mechanism, lockable, with black handle
Design type	For mounting and installation
Design of the operating mechanism	manual operating mechanism
Design of the load switch / Strip form	No
Type of the driving mechanism / motor drive	No
Number of poles	3
Type of voltage	AC/DC
Insulation voltage / rated value	1 000 V
Protection class	
Protection class IP	IP00
Dissipation	
Power loss [W] / for rated value of the current / at AC / in hot operating state / per pole	11 W

Electricity	
Continuous current / rated value	400 A
Let-through current / I _{2 t} / maximum permissible / in utilization category / AC-22 B / at 400 V	2 150 000 A ² ·s
Main circuit	
Number of poles / for main current circuit	3
Operating voltage	
• at AC / at 50/60 Hz / rated value	690 V
• at DC / rated value	440 V
Rated current I _e / maximum / in utilization category	
• AC-21 A / at 400 V	400 A
• AC-21 A / at 500 V	400 A
• AC-21 B / at 400 V	400 A
• AC-21 B / at 500 V	400 A
• AC-22 A / at 400 V	330 A
• AC-22 A / at 500 V	330 A
• AC-22 B / at 400 V	330 A
• AC-22 B / at 500 V	330 A
Auxiliary circuit	
Number of CO contacts / for auxiliary contacts	0
Number of NC contacts / for auxiliary contacts	0
Number of NO contacts / for auxiliary contacts	0
Product feature / interlock	Yes
Product extension	
• Auxiliary switch	Yes
• optional	
— motor drive	No
— Voltage trigger	No
— interlock	Yes
Short circuit	
Maximum short-circuit current breaking capacity (I _{cu}) / at 400 V / rated value	50 000 A
Conditional rated short-circuit current	
• 400V	50 000 A
• 500V	50 000 A
• in utilization category / AC-21 A / at 400 V	50 000 A
• in utilization category / AC-21 A / at 500 V	50 000 A
• in utilization category / AC-21 B / at 400 V	50 000 A
• in utilization category / AC-21 B / at 500 V	50 000 A
• in utilization category / AC-22 A / at 400 V	50 000 A
• in utilization category / AC-22 A / at 500 V	50 000 A

- in utilization category / AC-22 B / at 400 V 50 000 A
- in utilization category / AC-22 B / at 500 V 50 000 A

Connections

Connectable conductor cross-section	
<ul style="list-style-type: none"> • for main contacts <ul style="list-style-type: none"> — stranded / maximum 	240 mm ²
Type of connection, main circuit	Flat-type screw terminal; M10
Type of electrical connection	
<ul style="list-style-type: none"> • for main current circuit 	flat connector

Mechanical Design

Height	200 mm
Width	194 mm
Depth	521 mm
Type of mounting	fixed mounted
Mounting type	floor mounting
Mounting type	
<ul style="list-style-type: none"> • front mounting with 4-hole attachment 	No
<ul style="list-style-type: none"> • front mounting with central attachment 	No
<ul style="list-style-type: none"> • rail mounting 	No
Net weight	5.05 kg

Environmental conditions

Ambient temperature	
<ul style="list-style-type: none"> • during operation / minimum 	-20 °C
<ul style="list-style-type: none"> • during operation / maximum 	55 °C
<ul style="list-style-type: none"> • during storage / minimum 	-50 °C
<ul style="list-style-type: none"> • during storage / maximum 	80 °C

Certificates

Certificate of suitability	CE
Reference code / acc. to DIN EN 61346-2	Q

Declaration of Conformity	Test Certificates	other
---------------------------	-------------------	-------



[Special Test Certificate](#)

[Miscellaneous](#)

Further information

Information- and Downloadcenter (Catalogs, Brochures,...)

<http://www.siemens.com/lowvoltage/catalogs>

Industry Mall (Online ordering system)

<https://mall.industry.siemens.com/mall/en/en/Catalog/product?mlfb=3KE4330-0GA>

Service&Support (Manuals, Certificates, Characteristics, FAQs,...)

<https://support.industry.siemens.com/cs/ww/en/ps/3KE4330-0GA>

Image database (product images, 2D dimension drawings, 3D models, device circuit diagrams, ...)

http://www.automation.siemens.com/bilddb/cax_en.aspx?mlfb=3KE4330-0GA

CAX-Online-Generator

<http://www.siemens.com/cax>

Tender specifications

<http://www.siemens.com/specifications>