

AUXILIARY SWITCH, 1 NC CONTACT, 1 NO CONTACT, CONNECTION AUXILIARY CIRCUIT: SCREW TERMINAL,



General technical data:

product brand name		SIRIUS
Product designation		auxiliary switch compact feeder
Protection class IP		IP20
Relative humidity during operation	%	10 ... 90
Ambient temperature		
• during transport	°C	-55 ... +80
• during storage	°C	-55 ... +80
• during operation	°C	-20 ... +60
Equipment marking acc. to DIN EN 61346-2		K
Equipment marking acc. to DIN 40719 extended according to IEC 204-2 acc. to IEC 750		K

Auxiliary circuit:

Number of NC contacts for auxiliary contacts		1
Number of NO contacts for auxiliary contacts		1

Installation/ mounting/ dimensions:

Width	mm	45
Height	mm	32
Depth	mm	25

Connections/ Terminals:





Wire stripping length	mm	10
Type of electrical connection		
• for auxiliary and control current circuit		screw-type terminals





Design of screw-type connection for auxiliary contacts		M6
Tightening torque for auxiliary contacts with screw-type terminals	N·m	0.8 ... 1.2
Type of connectable conductor cross-section for auxiliary contacts <ul style="list-style-type: none"> • solid • finely stranded <ul style="list-style-type: none"> — with core end processing 		max. 2x (1 ... 4 mm ²) 2x (0.5 ... 1.5 mm ²), 2x (0.75 ... 2.5 mm ²)
Type of connectable conductor cross-section for AWG conductors for auxiliary contacts		2x (20 ... 16), 2x (18 ... 14), 1x 12

Certificates/ approvals:

Certificate of suitability

IEC / EN 60947-6-2

General Product Approval	EMC	Functional Safety/Safety of Machinery	Shipping Approval
 CCC	 C-TICK	 VDE	 BUREAU VERITAS

Shipping Approval	other
 DNV	 PRs
 RINA	 RMRS
	Declaration of Conformity
	Environmental Confirmations

other
other

Further information

Information- and Downloadcenter (Catalogs, Brochures,...)

<http://www.siemens.com/industrial-controls/catalogs>

Industry Mall (Online ordering system)

<http://www.siemens.com/industrymall>

Cax online generator

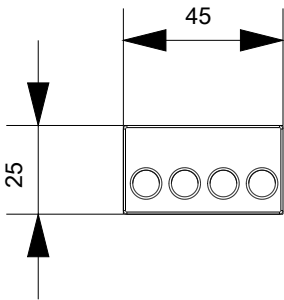
<http://support.automation.siemens.com/WW/CAXorder/default.aspx?lang=en&mfb=3RA69131A>

Service&Support (Manuals, Certificates, Characteristics, FAQs,...)

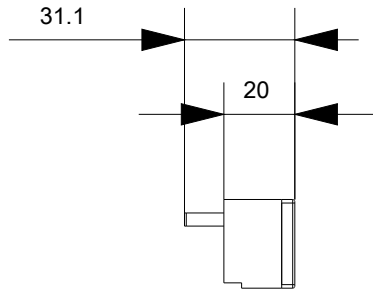
<https://support.industry.siemens.com/cs/ww/en/ps/3RA69131A>

Image database (product images, 2D dimension drawings, 3D models, device circuit diagrams, EPLAN macros, ...)

http://www.automation.siemens.com/bilddb/cax_de.aspx?mfb=3RA69131A&lang=en



last modified:



27.04.2015