



Figure similar

CONTACTOR, 250KW/400V/AC-3 AC(40...60HZ)/DC OPERATION
UC 110-127V AUXILIARY CONTACTS 2NO+2NC 3-POLE, SIZE
S12 BAR CONNECTIONS CONVENT. OPERATING MECHANISM
SCREW TERMINAL

product brand name	SIRIUS
Product designation	power contactor
General technical data:	
Size of contactor	S12
Insulation voltage	
• Rated value	1 000 V
Surge voltage resistance Rated value	8 kV
Protection class IP	
• on the front	IP00
• of the terminal	IP00
Degree of pollution	3
Mechanical service life (switching cycles)	
• of the contactor typical	10 000 000
• of the contactor with added electronics-compatible auxiliary switch block typical	5 000 000
• of the contactor with added auxiliary switch block typical	10 000 000
Ambient conditions:	
Installation altitude at height above sea level maximum	2 000 m
Ambient temperature	
• during operation	-25 ... +60 °C
• during storage	-55 ... +80 °C
Main circuit:	
Number of NO contacts for main contacts	3

Number of NC contacts for main contacts	0
Operating current	
<ul style="list-style-type: none"> • at AC-1 at 400 V <ul style="list-style-type: none"> — at ambient temperature 40 °C Rated value 	610 A
<ul style="list-style-type: none"> • at AC-1 up to 690 V <ul style="list-style-type: none"> — at ambient temperature 40 °C Rated value — at ambient temperature 60 °C Rated value 	610 A 550 A
<ul style="list-style-type: none"> • at AC-3 <ul style="list-style-type: none"> — at 400 V Rated value — at 690 V Rated value 	500 A 450 A
Connectable conductor cross-section in main circuit at AC-1	
<ul style="list-style-type: none"> • at 60 °C minimum permissible 	370 mm ²
<ul style="list-style-type: none"> • at 40 °C minimum permissible 	370 mm ²
Operating current for ≥ 200000 operating cycles at AC-4	
<ul style="list-style-type: none"> • at 400 V Rated value 	175 A
<ul style="list-style-type: none"> • at 690 V Rated value 	150 A
Operating current	
<ul style="list-style-type: none"> • with 1 current path at DC-1 <ul style="list-style-type: none"> — at 24 V Rated value — at 110 V Rated value 	400 A 33 A
<ul style="list-style-type: none"> • with 2 current paths in series at DC-1 <ul style="list-style-type: none"> — at 24 V Rated value — at 110 V Rated value 	400 A 400 A
<ul style="list-style-type: none"> • with 3 current paths in series at DC-1 <ul style="list-style-type: none"> — at 24 V Rated value — at 110 V Rated value 	400 A 400 A
Operating current	
<ul style="list-style-type: none"> • with 1 current path at DC-3 at DC-5 <ul style="list-style-type: none"> — at 24 V Rated value — at 110 V Rated value 	400 A 3 A
<ul style="list-style-type: none"> • with 2 current paths in series at DC-3 at DC-5 <ul style="list-style-type: none"> — at 110 V Rated value — at 24 V Rated value 	400 A 400 A
<ul style="list-style-type: none"> • with 3 current paths in series at DC-3 at DC-5 <ul style="list-style-type: none"> — at 110 V Rated value — at 24 V Rated value 	400 A 400 A
Operating power	
<ul style="list-style-type: none"> • at AC-1 <ul style="list-style-type: none"> — at 230 V at 60 °C Rated value — at 400 V Rated value 	151 kW 362 kW

— at 690 V Rated value	624 kW
— at 690 V at 60 °C Rated value	624 kW
• at AC-2 at 400 V Rated value	291 kW
• at AC-3	
— at 230 V Rated value	164 kW
— at 400 V Rated value	291 kW
— at 500 V Rated value	363 kW
— at 690 V Rated value	453 kW
Operating power for ≥ 200000 operating cycles at AC-4	
• at 400 V Rated value	98 kW
• at 690 V Rated value	148 kW
Thermal short-time current restricted to 10 s	4 000 A
Active power loss at AC-3 at 400 V for rated value of the operating current per conductor	55 W
No-load switching frequency	
• at AC	2 000 1/h
• at DC	2 000 1/h
Operating frequency	
• at AC-1 maximum	500 1/h
• at AC-2 maximum	170 1/h
• at AC-3 maximum	420 1/h
• at AC-4 maximum	130 1/h

Control circuit/ Control:	
Type of voltage of the control supply voltage	AC/DC
Control supply voltage at AC	
• at 50 Hz Rated value	110 ... 127 V
• at 60 Hz Rated value	110 ... 127 V
Control supply voltage at DC	
• Rated value	110 ... 127 V
• Rated value	40 Hz
Control supply voltage frequency 2 Rated value	60 Hz
Operating range factor control supply voltage rated value of the magnet coil at AC	
• at 50 Hz	0.8 ... 1.1
• at 60 Hz	0.8 ... 1.1
Operating range factor control supply voltage rated value of the magnet coil at DC	0.8 ... 1.1
Design of the surge suppressor	with varistor
Apparent pick-up power of the magnet coil at AC	830 V·A
Inductive power factor with closing power of the coil	0.9
Apparent holding power of the magnet coil at AC	9.2 V·A

Inductive power factor with the holding power of the coil	0.9
Closing power of the magnet coil at DC	920 W
Holding power of the magnet coil for DC	10 W
Closing delay	
• at AC	45 ... 100 ms
• at DC	45 ... 100 ms
Opening delay	
• at AC	60 ... 100 ms
• at DC	60 ... 100 ms
Arcing time	10 ... 15 ms

Auxiliary circuit:

Number of NC contacts	
• for auxiliary contacts	
— instantaneous contact	2
Number of NO contacts	
• for auxiliary contacts	
— instantaneous contact	2
Operating current at AC-12 maximum	10 A
Operating current at AC-15	
• at 230 V Rated value	6 A
• at 400 V Rated value	3 A
Operating current at DC-12	
• at 60 V Rated value	6 A
• at 110 V Rated value	3 A
• at 220 V Rated value	1 A
Operating current at DC-13	
• at 24 V Rated value	10 A
• at 60 V Rated value	2 A
• at 110 V Rated value	1 A
• at 220 V Rated value	0.3 A

UL/CSA ratings:

Contact rating of the auxiliary contacts acc. to UL	A600 / Q600
---	-------------

Short-circuit:

Design of the fuse link	
• for short-circuit protection of the main circuit	
— with type of assignment 1 required	fuse gL/gG: 630 A
— with type of assignment 2 required	fuse gL/gG: 500 A
• for short-circuit protection of the auxiliary switch required	fuse gL/gG: 10 A

Installation/ mounting/ dimensions:

Mounting type	screw fixing
• Side-by-side mounting	Yes
Height	214 mm
Width	160 mm
Depth	225 mm
Required spacing	
• for grounded parts — at the side	10 mm

Connections/ Terminals:

Type of electrical connection	
• for main current circuit	screw-type terminals
• for auxiliary and control current circuit	screw-type terminals
Type of connectable conductor cross-section	
• for AWG conductors for main contacts	2/0 ... 500 kcmil
Type of connectable conductor cross-section	
• for auxiliary contacts	
— solid	2x (0.5 ... 1.5 mm ²), 2x (0.75 ... 2.5 mm ²), max. 2x (0.75 ... 4 mm ²)
— finely stranded with core end processing	2x (0.5 ... 1.5 mm ²), 2x (0.75 ... 2.5 mm ²)
• for AWG conductors for auxiliary contacts	2x (20 ... 16), 2x (18 ... 14), 1x 12

Certificates/ approvals:

General Product Approval	Functional Safety/Safety of Machinery	Declaration of Conformity
---------------------------------	--	----------------------------------



[Baumusterbescheinigung](#)



Test Certificates	Shipping Approval
--------------------------	--------------------------

[spezielle Prüfbescheinigungen](#)

[Typprüfbescheinigung/Werkszeugnis](#)

[sonstige](#)



Shipping Approval	other
--------------------------	--------------



[sonstige](#)

[Umweltbestätigung](#)

[Bestätigungen](#)

Further information

Information- and Downloadcenter (Catalogs, Brochures,...)

<http://www.siemens.com/industrial-controls/catalogs>

Industry Mall (Online ordering system)

<http://www.siemens.com/industrymall>

Cax online generator

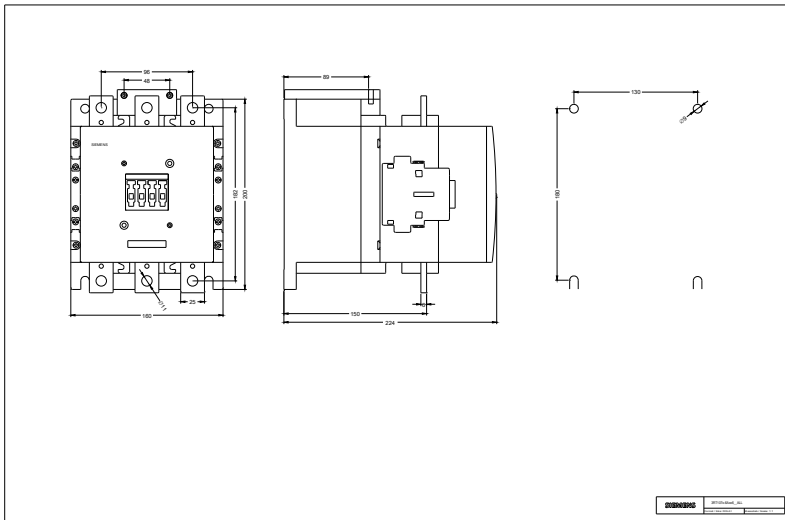
<http://support.automation.siemens.com/WW/CAXorder/default.aspx?lang=en&mfb=3RT10766AF36>

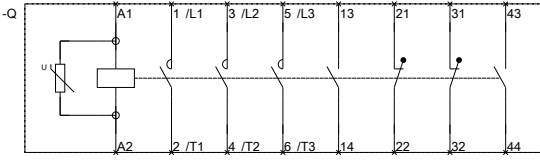
Service&Support (Manuals, Certificates, Characteristics, FAQs,...)

<https://support.industry.siemens.com/cs/ww/en/ps/3RT10766AF36>

Image database (product images, 2D dimension drawings, 3D models, device circuit diagrams, EPLAN macros, ...)

http://www.automation.siemens.com/bilddb/cax_de.aspx?mfb=3RT10766AF36&lang=en





last modified:

29.06.2015

3RT106-A.6.01.4.IEC.DXF
3RT107-A.6.01.4.IEC.DXF