



OVERLOAD RELAY 22...32 A FOR MOTOR PROTECTION SIZE S3, CLASS 10 FOR CONTACTOR MOUNTING MAIN CIRCUIT: SCREW CONN. AUX. CIRCUIT: SCREW CONN. MANUAL-AUTOMATIC-RESET

Figure similar

product brand name	SIRIUS
Product designation	thermal overload relay
General technical data:	
Size of contactor can be combined company-specific	S3
Active power loss total typical	16.5 W
Insulation voltage	1 000 V
<ul style="list-style-type: none"> with degree of pollution 3 Rated value 	
Surge voltage resistance Rated value	8 kV
Protection class IP	IP20
<ul style="list-style-type: none"> on the front 	
Type of assignment	2
Type of protection	DMT 98 ATEX G 001
Ambient conditions:	
Installation altitude at height above sea level maximum	2 000 m
Ambient temperature	
<ul style="list-style-type: none"> during operation 	-20 ... +70 °C
<ul style="list-style-type: none"> during storage 	-55 ... +80 °C
<ul style="list-style-type: none"> during transport 	-55 ... +80 °C
Relative humidity during operation	100 %
Main circuit:	
Adjustable response value current of the current-dependent overload release	22 ... 32 A
Operating voltage	1 000 V
<ul style="list-style-type: none"> at AC-3 Rated value maximum 	

Auxiliary circuit:	
Number of NC contacts • for auxiliary contacts	1
Number of NO contacts • for auxiliary contacts	1
Number of CO contacts • for auxiliary contacts	0
Operating current of the auxiliary contacts at AC-15 • at 24 V • at 110 V • at 120 V • at 125 V • at 230 V • at 400 V	3 A 3 A 3 A 3 A 2 A 1 A
Operating current of the auxiliary contacts at DC-13 • at 24 V • at 110 V • at 125 V • at 220 V	1 A 0.22 A 0.22 A 0.11 A
Protective and monitoring functions:	
Trip class	CLASS 10
Short-circuit:	
Design of the fuse link • for short-circuit protection of the auxiliary switch required	fuse gL/gG: 6 A, quick: 10 A
Installation/ mounting/ dimensions:	
mounting position	with vertical mounting surface +/-135° rotatable, with vertical mounting surface +/- 45° tiltable to the front and back
Mounting type	direct mounting
Height	120 mm
Width	70 mm
Depth	140 mm
Required spacing • with side-by-side mounting — forwards — Backwards — upwards — downwards — at the side • for grounded parts — forwards	0 mm 0 mm 0 mm 0 mm 0 mm 0 mm

— Backwards	0 mm
— upwards	0 mm
— at the side	6 mm
— downwards	0 mm
• for live parts	
— forwards	0 mm
— Backwards	0 mm
— upwards	0 mm
— downwards	0 mm
— at the side	6 mm

Connections/ Terminals:

Product function	
• removable terminal for auxiliary and control circuit	No
Type of electrical connection	
• for main current circuit	screw-type terminals
• for auxiliary and control current circuit	screw-type terminals
Type of connectable conductor cross-section	
• for main contacts	
— solid	2x (2.5 ... 16 mm ²)
— stranded	2x (10 ... 50 mm ²), 10 ... 70 mm ²
— finely stranded with core end processing	2x (2.5 ... 35 mm ²), 2.5 ... 50 mm ²
• for AWG conductors for main contacts	2x (10 ... 1/0), 1x (10 ... 2/0)
Type of connectable conductor cross-section	
• for auxiliary contacts	
— solid	2x (0.5 ... 1.5 mm ²), 2x (0.75 ... 2.5 mm ²)
— finely stranded with core end processing	2x (0.5 ... 1.5 mm ²), 2x (0.75 ... 2.5 mm ²)
• for AWG conductors for auxiliary contacts	2x (20 ... 16), 2x (18 ... 14)

Mechanical data:

Size of overload relay	S3
-------------------------------	----

Certificates/ approvals:

General Product Approval	For use in hazardous locations	Declaration of Conformity
--------------------------	--------------------------------	---------------------------



Test Certificates	Shipping Approval
-------------------	-------------------

[spezielle Prüfbescheinigung](#)
n

[Typprüfbescheinigung/Werkszeugnis](#)



Shipping Approval	other
-------------------	-------



[Umweltbestätigung](#)

[sonstig](#)

Further information

Information- and Downloadcenter (Catalogs, Brochures,...)

<http://www.siemens.com/industrial-controls/catalogs>

Industry Mall (Online ordering system)

<http://www.siemens.com/industrymall>

Cax online generator

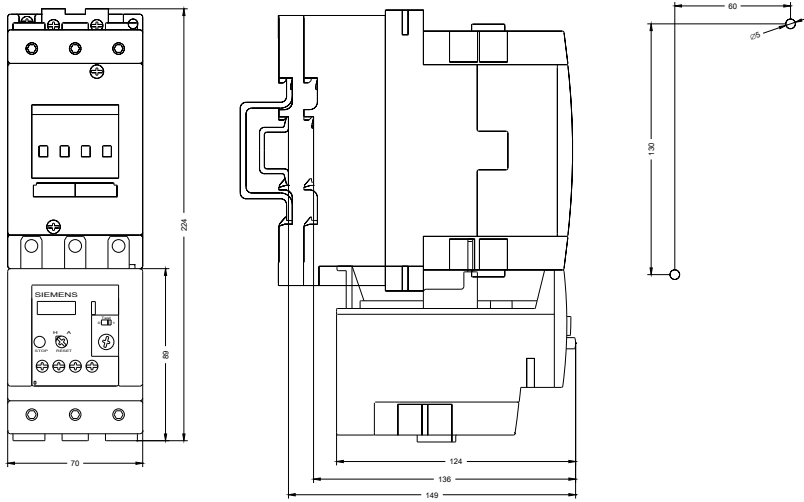
<http://support.automation.siemens.com/WW/CAXorder/default.aspx?lang=en&mfb=3RU11464EB0>

Service&Support (Manuals, Certificates, Characteristics, FAQs,...)

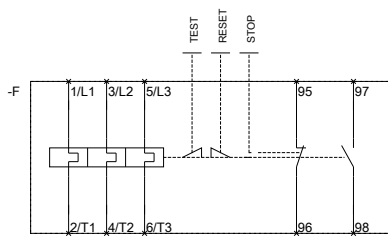
<https://support.industry.siemens.com/cs/ww/en/ps/3RU11464EB0>

Image database (product images, 2D dimension drawings, 3D models, device circuit diagrams, EPLAN macros, ...)

http://www.automation.siemens.com/bilddb/cax_de.aspx?mfb=3RU11464EB0&lang=en



MEBERSCHREZ AIS FUER



QVZREFOABORRELCAYGNOR

last modified:

29.06.2015