

OVERLOAD RELAY, 57...75 A, 1NO+1NC, SIZE S3, CLASS 10,
FOR CONTACTOR MOUNTING



Figure similar

| | |
|---------------------|------------------------|
| product brand name | SIRIUS |
| Product designation | thermal overload relay |

| General technical data: | |
|--|-------------------|
| Size of overload relay | S3 |
| Size of contactor can be combined company-specific | S3 |
| Power loss [W] total typical | 16.5 W |
| Insulation voltage with degree of pollution 3 rated value | 1 000 V |
| Surge voltage resistance rated value | 8 kV |
| Protection class IP | IP20 |
| <ul style="list-style-type: none"> on the front | IP20 |
| Shock resistance | 8g / 10 ms |
| Type of protection | DMT 98 ATEX G 001 |
| Protection against electrical shock | finger-safe |
| Equipment marking acc. to DIN EN 81346-2 | F |

| Ambient conditions: | |
|---|---------|
| Installation altitude at height above sea level maximum | 2 000 m |
| Ambient temperature | |

| | |
|--|----------------|
| <ul style="list-style-type: none"> during operation | -20 ... +70 °C |
| <ul style="list-style-type: none"> during storage | -55 ... +80 °C |
| <ul style="list-style-type: none"> during transport | -55 ... +80 °C |
| Relative humidity during operation | 100 % |

Main circuit:

| | |
|---|-------------|
| Number of poles for main current circuit | 3 |
| Adjustable pick-up value current of the current-dependent overload release | 57 ... 75 A |
| Operating voltage | |
| <ul style="list-style-type: none"> at AC-3 rated value maximum | 1 000 V |

Auxiliary circuit:

| | |
|---|--|
| Number of NC contacts | |
| <ul style="list-style-type: none"> for auxiliary contacts | 1 |
| Number of NO contacts | |
| <ul style="list-style-type: none"> for auxiliary contacts | 1 |
| Number of CO contacts | |
| <ul style="list-style-type: none"> for auxiliary contacts | 0 |
| Operating current of auxiliary contacts at AC-15 | |
| <ul style="list-style-type: none"> at 24 V at 110 V at 120 V at 125 V at 230 V at 400 V | 3 A 3 A 3 A 3 A 2 A 1 A |
| Operating current of auxiliary contacts at DC-13 | |
| <ul style="list-style-type: none"> at 24 V at 110 V at 125 V at 220 V | 1 A 0.22 A 0.22 A 0.11 A |

Protective and monitoring functions:

| | |
|-------------------|----------|
| Trip class | Class 10 |
|-------------------|----------|

Short-circuit protection

| | |
|---|------------------------------|
| Design of the fuse link | |
| <ul style="list-style-type: none"> for short-circuit protection of the auxiliary switch required | fuse gL/gG: 6 A, quick: 10 A |

Installation/ mounting/ dimensions:

| | |
|--------------------------|---|
| Mounting position | with vertical mounting surface +/-135° rotatable, with vertical mounting surface +/- 45° tiltable to the front and back |
| Mounting type | direct mounting |
| Height | 120 mm |
| Width | 70 mm |

| | |
|---|--------|
| Depth | 140 mm |
| Required spacing | |
| <ul style="list-style-type: none"> • with side-by-side mounting <ul style="list-style-type: none"> — forwards 0 mm — Backwards 0 mm — upwards 0 mm — downwards 0 mm — at the side 0 mm • for grounded parts <ul style="list-style-type: none"> — forwards 0 mm — Backwards 0 mm — upwards 0 mm — at the side 6 mm — downwards 0 mm • for live parts <ul style="list-style-type: none"> — forwards 0 mm — Backwards 0 mm — upwards 0 mm — downwards 0 mm — at the side 6 mm | |

Connections/ Terminals:

| | |
|---|---|
| Product function | |
| <ul style="list-style-type: none"> • removable terminal for auxiliary and control circuit | No |
| Type of electrical connection | |
| <ul style="list-style-type: none"> • for main current circuit • for auxiliary and control current circuit | <p>screw-type terminals</p> <p>screw-type terminals</p> |
| Type of connectable conductor cross-sections | |
| <ul style="list-style-type: none"> • for main contacts <ul style="list-style-type: none"> — solid 2x (2.5 ... 16 mm²) — stranded 2x (10 ... 50 mm²), 10 ... 70 mm² — finely stranded with core end processing 2x (2.5 ... 35 mm²), 2.5 ... 50 mm² • at AWG conductors for main contacts 2x (10 ... 1/0), 1x (10 ... 2/0) | |
| Type of connectable conductor cross-sections | |
| <ul style="list-style-type: none"> • for auxiliary contacts <ul style="list-style-type: none"> — solid 2x (0.5 ... 1.5 mm²), 2x (0.75 ... 2.5 mm²) — finely stranded with core end processing 2x (0.5 ... 1.5 mm²), 2x (0.75 ... 2.5 mm²) • at AWG conductors for auxiliary contacts 2x (20 ... 16), 2x (18 ... 14) | |

Certificates/approvals

| | |
|--------------------------|--------------------------------|
| General Product Approval | For use in hazardous locations |
|--------------------------|--------------------------------|



| | | |
|---------------------------|-------------------|-------------------|
| Declaration of Conformity | Test Certificates | Shipping Approval |
|---------------------------|-------------------|-------------------|



[Typprüfbescheinigung/Werkszeugnis](#)

[spezielle Prüfbescheinigungen](#)



| | |
|-------------------|-------|
| Shipping Approval | other |
|-------------------|-------|



[sonstig](#)

[Umweltbestätigung](#)

Further information

Information- and Downloadcenter (Catalogs, Brochures,...)

<http://www.siemens.com/industrial-controls/catalogs>

Industry Mall (Online ordering system)

<https://mall.industry.siemens.com/mall/en/en/Catalog/product?mlfb=3RU11464KB0>

Cax online generator

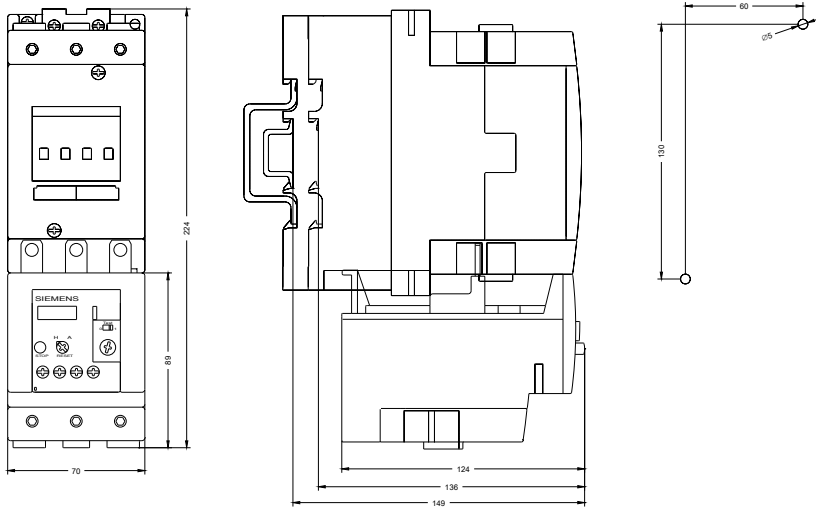
<http://support.automation.siemens.com/WW/CAXorder/default.aspx?lang=en&mlfb=3RU11464KB0>

Service&Support (Manuals, Certificates, Characteristics, FAQs,...)

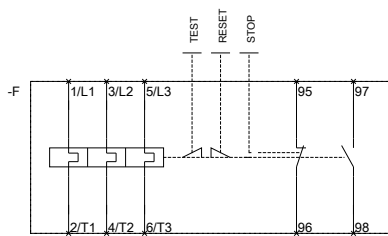
<https://support.industry.siemens.com/cs/ww/en/ps/3RU11464KB0>

Image database (product images, 2D dimension drawings, 3D models, device circuit diagrams, EPLAN macros, ...)

http://www.automation.siemens.com/bilddb/cax_de.aspx?mlfb=3RU11464KB0&lang=en



MEBERSCHREZ AIS FUER



QUERBEFORDERUNG

last modified:

14.03.2016