

RCCB, 2-pole, type A, In: 40 A, 30 mA, Un AC: 230 V



Model	
product brandname	SENTRON
Product designation	RCCB
Design of the product	Instantaneous
General technical data	
Number of poles	2
Size of installation devices / acc. to DIN 43880	1
Protection against electrical shock	Finger and back-of-hand safe
Short-circuit current rating	10 kA
circuit-breaker / Design	5SV3
Mechanical service life (switching cycles) / typical	10 000
Overvoltage category	III
Supply voltage	
Supply voltage	
<ul style="list-style-type: none"> <li>at AC / rated value</li> </ul>	230 V
<ul style="list-style-type: none"> <li>for testing equipment / minimum</li> </ul>	195 V
Supply voltage frequency	
<ul style="list-style-type: none"> <li>rated value</li> </ul>	50 Hz

Protection class	
<b>Protection class IP</b>	IP20, if the distribution board is installed, with connected conductors
Switching capacity	
Switching capacity current / according to IEC 61008-1 / rated value	0.5 kA
Dissipation	
<b>Power loss [W]</b>	
<ul style="list-style-type: none"> <li>for rated value of the current / at AC / in hot operating state / per pole</li> </ul>	2.6 W
<ul style="list-style-type: none"> <li>maximum</li> </ul>	1 W
Electricity	
<b>Tripping residual current / rated value</b>	30 mA
rated current $I_n$ / IEC, DIN/VDE / at 40 Cel	40 A
<b>Type of fault current</b>	A
Current / at AC / rated value	40 A
<b><math>I^2t</math>-value / permissible</b>	15 620 A <sup>2</sup> ·s
Surge current resistance / rated value	1 kA
Product details	
Product feature / silicon-free	Yes
Product extension / can be installed / supplementary devices	Yes
Number	
<b>Number of test cycles / for environmental testing / acc. to IEC 60068-2-30</b>	28
Connections	
<b>Connectable conductor cross-section / stranded</b>	
<ul style="list-style-type: none"> <li>minimum</li> </ul>	0.75 mm <sup>2</sup>
<ul style="list-style-type: none"> <li>maximum</li> </ul>	35 mm <sup>2</sup>
<b>Connectable conductor cross-section / solid</b>	
<ul style="list-style-type: none"> <li>minimum</li> </ul>	0.75 mm <sup>2</sup>
<ul style="list-style-type: none"> <li>maximum</li> </ul>	35 mm <sup>2</sup>
<b>Tightening torque / with screw-type terminals</b>	
<ul style="list-style-type: none"> <li>minimum</li> </ul>	2.5 N·m
<ul style="list-style-type: none"> <li>maximum</li> </ul>	3 N·m
Position / of power supply cord	top or bottom
Mechanical Design	
<b>Height</b>	90 mm
<b>Width</b>	36 mm
<b>Depth</b>	70 mm
<b>Mounting position</b>	any

Installation depth	70 mm
Number of width units	2
Mounting type	DIN rail (REG)
Net weight	208 g

### Environmental conditions

#### Ambient temperature

- |  |        |
|--|--------|
| • minimum                              | -25 °C |
| • maximum                              | 45 °C  |
| • during storage / minimum permissible | -40 °C |
| • during storage / maximum permissible | 75 °C  |

### Certificates

#### Equipment marking

- |                          |   |
|--------------------------|---|
| • acc. to DIN EN 61346-2 | F |
| • acc. to DIN EN 81346-2 | F |

#### General Product Approval

#### Declaration of Conformity



[sonstig](#)



### Further information

#### Information- and Downloadcenter (Catalogs, Brochures,...)

<http://www.siemens.com/lowvoltage/catalogs>

#### Industry Mall (Online ordering system)

<https://mall.industry.siemens.com/mall/en/en/Catalog/product?mlfb=5SV3314-6>

#### Service&Support (Manuals, Certificates, Characteristics, FAQs,...)

<http://support.automation.siemens.com/WW/view/en/5SV3314-6/all>

#### Image database (product images, 2D dimension drawings, 3D models, device circuit diagrams, ...)

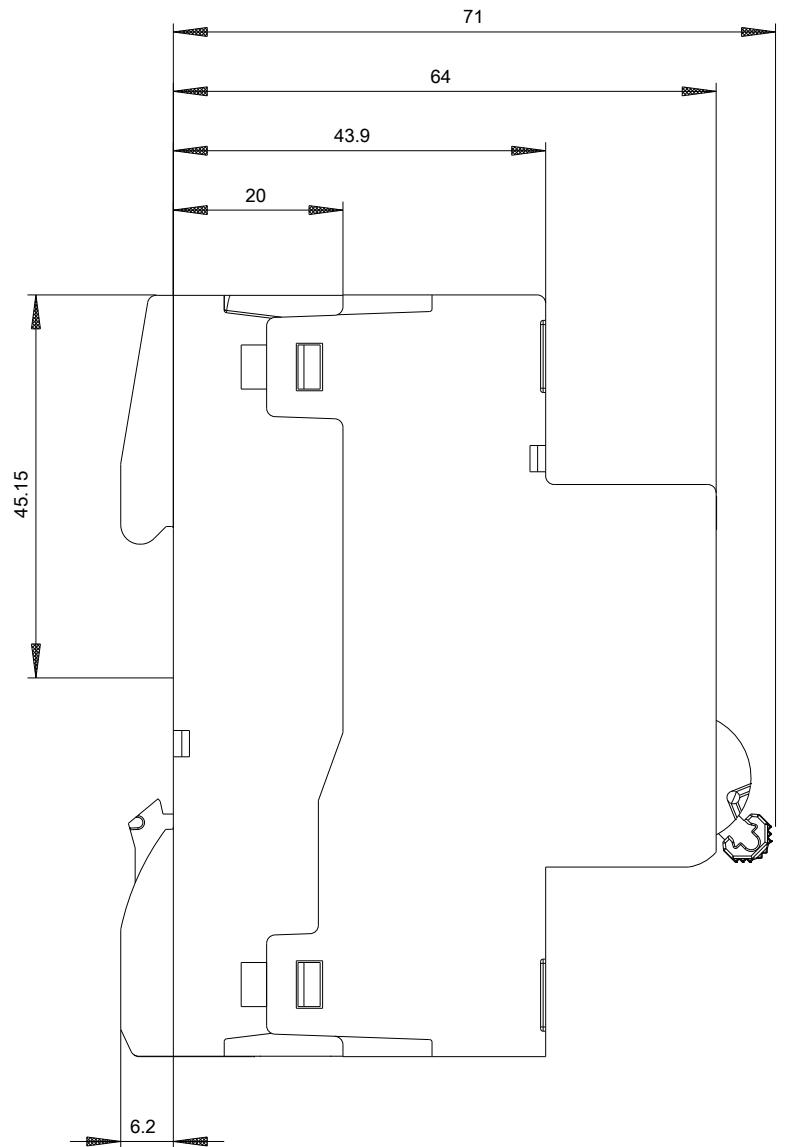
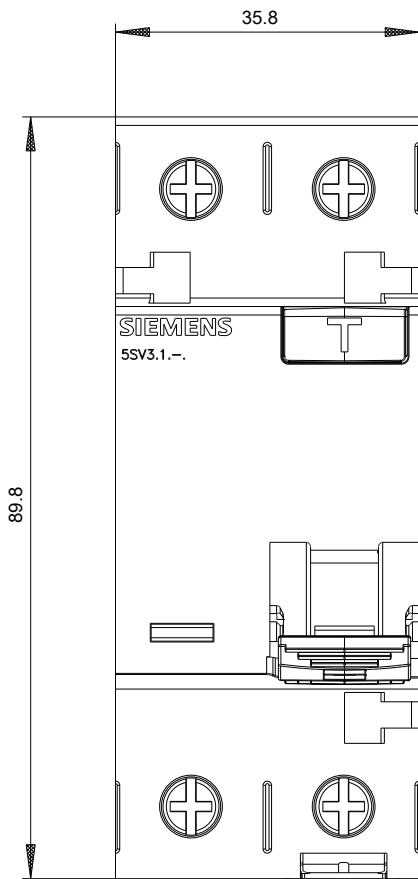
[http://www.automation.siemens.com/bilddb/cax\\_en.aspx?mlfb=5SV3314-6](http://www.automation.siemens.com/bilddb/cax_en.aspx?mlfb=5SV3314-6)

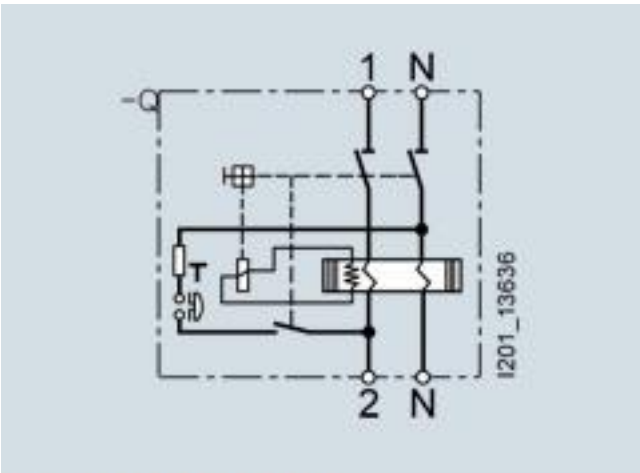
#### CAX-Online-Generator

<http://www.siemens.com/cax>

#### Tender specifications

<http://www.siemens.com/specifications>





Internal circuit diagram IEC