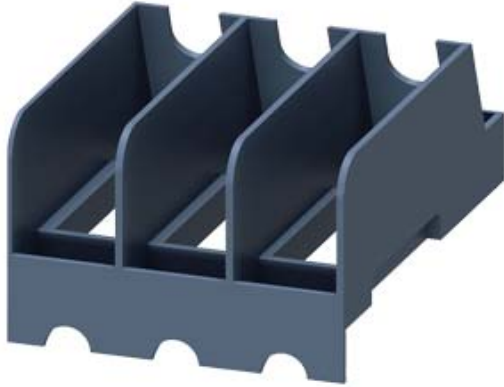


PHASE BARRIERS INCR. CLEAR. AND CREEPAGE  
DIST. FOR SIZE: S00/S0



General technical data:

<b>product brand name</b>		SIRIUS
<b>Product designation</b>		phase barrier
<b>Design of the product</b>		phase barrier for 3RV2
<b>Ambient temperature</b>		
• during operation	°C	-20 ... +70
• during storage	°C	-50 ... +80

Installation/ mounting/ dimensions:

<b>Mounting type</b>		clip-on
<b>Width</b>	mm	44.8
<b>Height</b>	mm	29.3
<b>Depth</b>	mm	60.6

Certificates/ approvals:

<b>Certificate of suitability</b>		CE / UL / CSA / CCC
-----------------------------------	--	---------------------

Declaration of Conformity	Test Certificates	Shipping Approval
---------------------------	-------------------	-------------------



[Type Test Certificates/Test Report](#)

[Special Test Certificate](#)



Shipping Approval	other
-------------------	-------



[Environmental Confirmations](#)

other
-------

[Confirmation](#)



[other](#)

### Further information

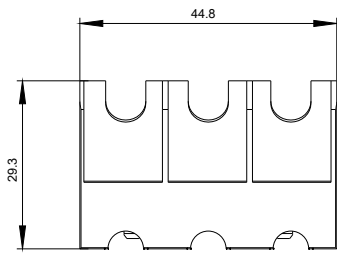
**Information- and Downloadcenter (Catalogs, Brochures,...)**  
<http://www.siemens.com/industrial-controls/catalogs>

**Industry Mall (Online ordering system)**  
<http://www.siemens.com/industrymall>

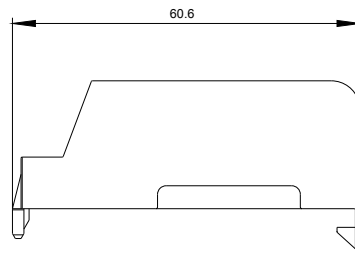
**Cax online generator**  
<http://support.automation.siemens.com/WW/CAXorder/default.aspx?lang=en&mlfb=3RV29281K>

**Service&Support (Manuals, Certificates, Characteristics, FAQs,...)**  
<https://support.industry.siemens.com/cs/ww/en/ps/3RV29281K>

**Image database (product images, 2D dimension drawings, 3D models, device circuit diagrams, EPLAN macros, ...)**  
[http://www.automation.siemens.com/bilddb/cax\\_de.aspx?mlfb=3RV29281K&lang=en](http://www.automation.siemens.com/bilddb/cax_de.aspx?mlfb=3RV29281K&lang=en)



last modified:



27.04.2015