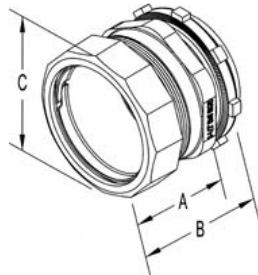
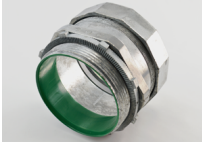


Connectors - Zinc

Images



[Download Photo Image](#)

[Download Dimensional Image](#)

Dimension A in Inches: 1

Dimension B in Inches: 2-1/4

Dimension C in Inches: 5

Application

Used to join steel EMT to box or enclosure. Concrete-tight. 2 1/2" thru 4" suitable for use with Steel EMT. Insulator rated 105°C. 2-1/2" through 4" also listed for use with Steel and Aluminum Rigid Conduit. CSA Listed Raintight/For Use in Wet Locations in Canada Only

Product Information

Material: Zinc Die Cast

Finish: Ball burnished, mirror smooth

Certifications & Codes:

CSA File Number: LR39354

Federal Specification Number: A-A-50553

NEMA Standard: FB-1

UL File Number: E24001

UL Standard: UL-514B

UNSPSC: 39121434

Catalog ID: 258-DC12

UPC Number: 781747162588

Description: Connector, Compression, Zinc Die Cast, 105°C Insulated Throat, Size 3 1/2 Inch

Application: Used to join steel EMT to box or enclosure. Concrete-tight. 2 1/2" thru 4" suitable for use with Steel EMT. Insulator rated 105°C. 2-1/2" through 4" also listed for use with Steel and Aluminum Rigid Conduit. CSA Listed Raintight/For Use in Wet Locations in Canada Only

Trade Size: 3-1/2"

Country of Manufacture: USA

Std Pkg Qty: 6

Unit Qty: Bulk