

Cam-Lok™ J Series Connectors are specifically designed to meet the needs of demanding portable applications. J Series Plugs and Receptacles are the proven industry standard single pole connectors for reliability and service with added safety.

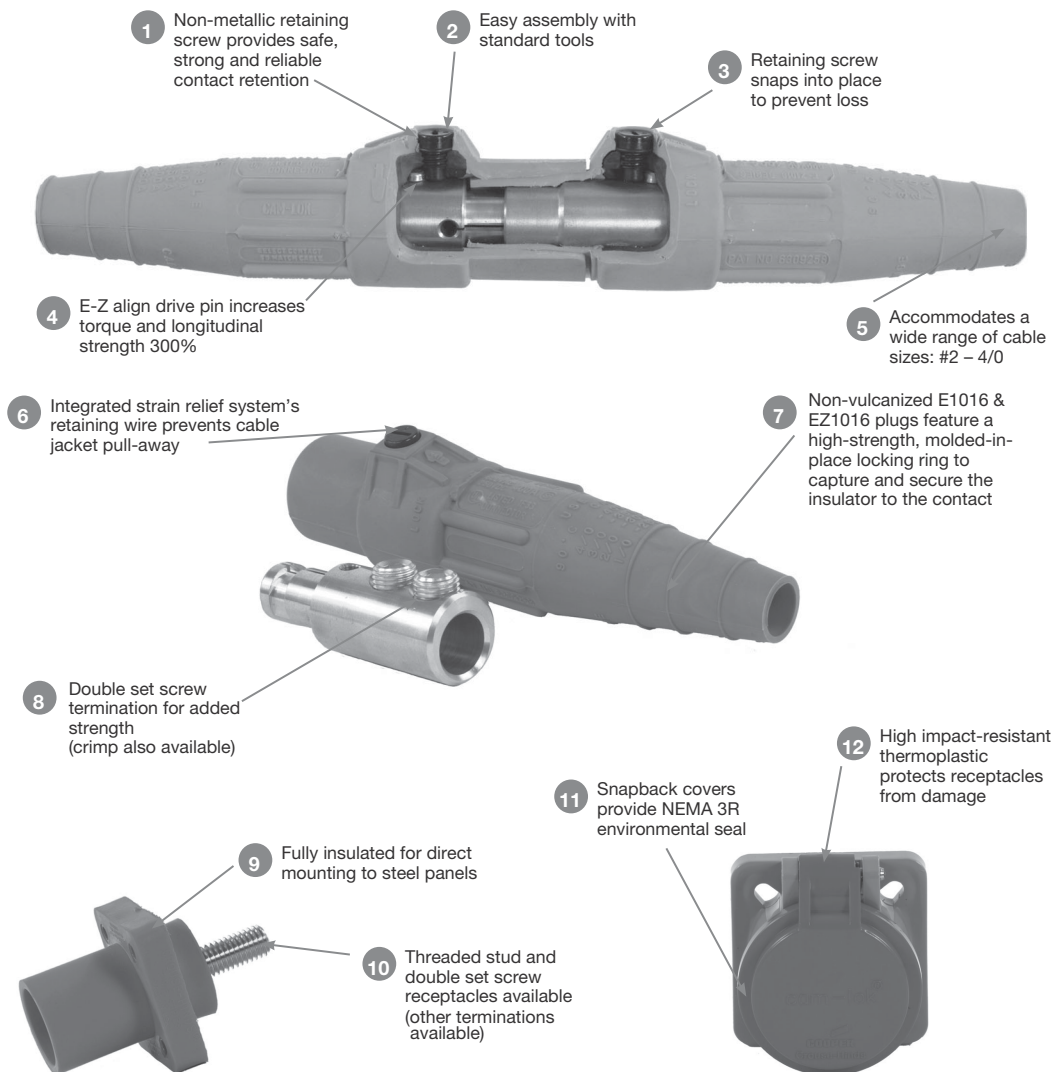
Applications:

- J Series Plugs and Receptacles are specifically designed for industrial power distribution applications requiring quick, tool-free connections
- Ideal for portable power, power distribution, motors, generators, and entertainment applications
- J Series replaces traditional hard wiring while cutting downtime and maintenance
- J Series Connectors are insulated, shatter/crack-resistant and watertight, plus heat-, weather-, ozone-, oil-, and abrasion-resistant

Certifications and Compliances:

- Listed to UL498, File No. E67181
- CSA certified to C22.2 No. 182.3 LR13963

Features:



Environmental Ratings:

- NEMA 3R or NEMA 4

Standard Materials:

- Accepts cable sizes: #8 AWG - 750 MCM
- Insulator - elastomeric or rubber
- Contact - brass or copper

Electrical Ratings:

- 600 Volts AC/DC
- 690 Amps continuous

Temperature Ratings:

- -40°C to 105°C

Cam-Lok™ J Series E1016 Receptacles

NEMA 3R

11P

**Cable Size #6 AWG - 250 MCM 600V AC/DC
Up to 400A Continuous**

J Series E1016, Elastomeric, Threaded Stud

Features:

- Double cam principle provides a positive, vibration-proof connection
- Self-compensating for wear
- No moving contact surfaces, eliminating arcing or burning
- Superior electro-mechanical connections
- Locked contacts will withstand a pulling force of 1,000 lbs.
- 1/3 of a turn assures a high pressure contact approaching 600 lbs. per sq. in., providing minimum resistance
- Contacts carefully machined from a high conductivity brass to a smooth sliding fit and easy locking action
- Watertight elastomeric body molded from colorfast material, color-coded for easy phase identification
- Recessed contacts protected by insulating jacket that extends beyond contact ends for safety
- Receptacles are safety insulated for direct mounting to steel panels

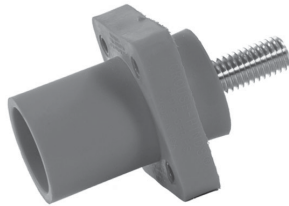
Testing and Code Compliance:

- Listed to UL498, File No. E67181
- CSA certified to C22.2 No. 182.3-M1987, File No. LR13963

Material Characteristics:

- Body - TPE
- Environmental rating: NEMA 3R
- Temperature rating: -40°C to 105°C

Ordering Information - Insulated Receptacles - 1 1/8" Threaded Stud:

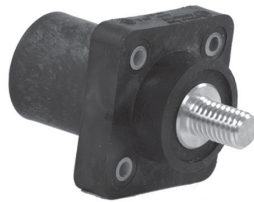


E1016-1602S 1 1/8"

Stud size: 1/2" - 13; maximum torque: 40 ft.-lbs.

Color	Male Complete Cat. #	Female Complete Cat. #
Black	E1016-1600S	E1016-1631S
Red	E1016-1602S	E1016-1633S
Green	E1016-1604S	E1016-1635S
White	E1016-1605S	E1016-1636S
Blue	E1016-1612S	E1016-1643S
Brown	E1016-1619S	E1016-1687S
Orange	E1016-1603S	E1016-1634S
Yellow	E1016-1601S	E1016-1632S

Ordering Information - Insulated Receptacles - 3/4" Threaded Stud:



E1016-1600 3/4"

Stud size: 1/2" - 13; maximum torque: 40 ft.-lbs.

Color	Male Complete Cat. #	Female Complete Cat. #
Black	E1016-1600	E1016-1631
Red	E1016-1602	E1016-1633
Green	E1016-1604	E1016-1635
White	E1016-1605	E1016-1636
Blue	E1016-1612	E1016-1643
Brown	E1016-1619	E1016-1687
Orange	E1016-1603	E1016-1634
Yellow	E1016-1601	E1016-1632

To order single packaged products, add a "K" suffix to the complete catalog number.

11P

11P Cam-Lok™ J Series E1016 Receptacles

NEMA 3R

**Cable Size #2 AWG - 4 / 0 600V AC/DC
Up to 400A Continuous**

J Series E1016, Elastomeric, Busbar

Features:

- Double cam principle provides a positive, vibration-proof connection
- Self-compensating for wear
- No moving contact surfaces, eliminating arcing or burning
- Superior electro-mechanical connections
- Locked contacts will withstand a pulling force of 1,000 lbs.
- 1/3 of a turn assures a high pressure contact approaching 600 lbs. per sq. in., providing minimum resistance
- Contacts carefully machined from a high conductivity brass to a smooth sliding fit and easy locking action
- Watertight elastomeric body molded from colorfast material, color-coded for easy phase identification
- Recessed contacts protected by insulating jacket that extends beyond contact ends for safety
- Receptacles are safety insulated for direct mounting to steel panels

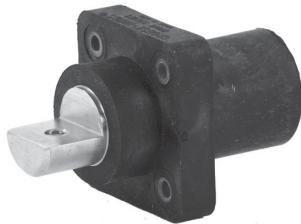
Testing and Code Compliance:

- Listed to UL498, File No. E67181
- CSA certified to C22.2 No. 182.3-M1987, File No. LR13963

Material Characteristics:

- Body - TPE
- Environmental rating: NEMA 3R
- Temperature rating: -40°C to 105°C

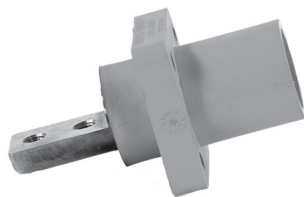
Ordering Information - Insulated Receptacles - Single Hole Busbar:



E1016-1700B

Color	Male Complete Cat. #	Female Complete Cat. #
Black	E1016-1700B	E1016-1725B
Red	E1016-1702B	E1016-1727B
Green	E1016-1704B	E1016-1729B
White	E1016-1705B	E1016-1730B
Blue	E1016-1706B	E1016-1731B
Brown	E1016-1707B	E1016-1732B
Orange	E1016-1703B	E1016-1728B
Yellow	E1016-1701B	E1016-1726B

Ordering Information - Insulated Receptacles - Double Hole Busbar:



E1016-1704BB

Color	Male Complete Cat. #	Female Complete Cat. #
Black	E1016-1700BB	E1016-1725BB
Red	E1016-1702BB	E1016-1727BB
Green	E1016-1704BB	E1016-1729BB
White	E1016-1705BB	E1016-1730BB
Blue	E1016-1706BB	E1016-1731BB
Brown	E1016-1707BB	E1016-1732BB
Orange	E1016-1703BB	E1016-1728BB
Yellow	E1016-1701BB	E1016-1726BB

To order single packaged products, add a "K" suffix to the complete catalog number.

11P

Cable Size #2 AWG - 4 / 0
600V AC/DC, Up to 400A Continuous
480V AC/DC, Up to 315A Continuous

J Series E1016, Elastomeric, Double Set Screw/Interlock Switch

Features:

- Double cam principle provides a positive, vibration-proof connection
- Self-compensating for wear
- No moving contact surfaces, eliminating arcing or burning
- Superior electro-mechanical connections
- Locked contacts will withstand a pulling force of 1,000 lbs.
- 1/3 of a turn assures a high pressure contact approaching 600 lbs. per sq. in., providing minimum resistance
- Contacts carefully machined from a high conductivity brass to a smooth sliding fit and easy locking action
- Watertight elastomeric body molded from colorfast material, color-coded for easy phase identification
- Recessed contacts protected by insulating jacket that extends beyond contact ends for safety
- Receptacles are safety insulated for direct mounting to steel panels

Testing and Code Compliance:

- Listed to UL498, File No. E67181
- CSA certified to C22.2 No. 182.3-M1987, File No. LR13963

Material Characteristics:

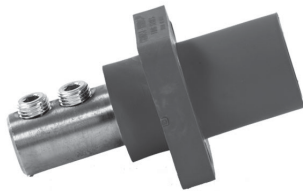
- Body - TPE
- Environmental rating: NEMA 3R
- Temperature rating: -40°C to 105°C

Insulated Receptacles - Double Set Screw Tightening Torque:

Cable	Torque (Lbs.)
#2 - #1	100
1 / 0 - 2 / 0	120
3 / 0 - 4 / 0	220

Ordering Information - Insulated Receptacles - Double Set Screw:

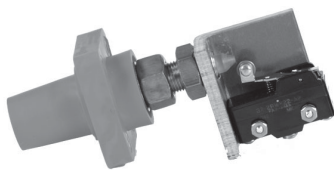
Color	Male Complete Cat. #	Female Complete Cat. #
Black	E1016-1700	E1016-1725
Red	E1016-1702	E1016-1727
Green	E1016-1704	E1016-1729
White	E1016-1705	E1016-1730
Blue	E1016-1706	E1016-1731
Brown	E1016-1707	E1016-1732
Orange	E1016-1703	E1016-1728
Yellow	E1016-1701	E1016-1726



E1016-1706

Ordering Information - Insulated Receptacles with Interlock Switch:

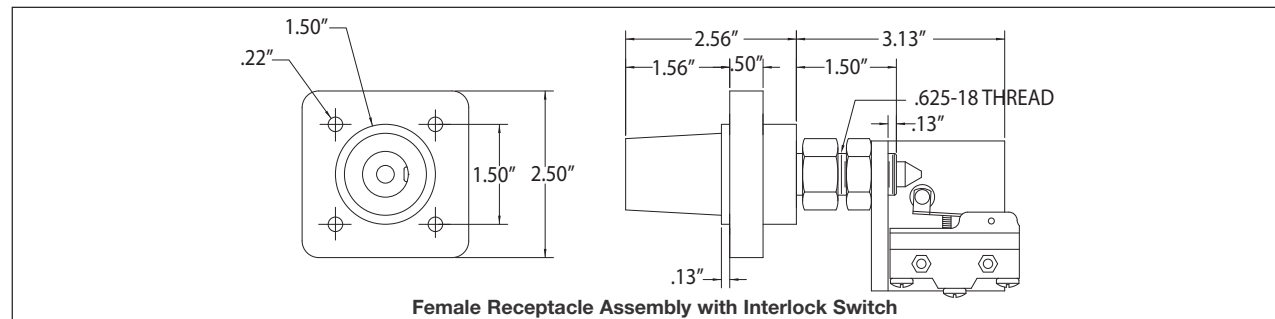
Color	Female Complete Cat. #
Black	E1016-2267
Red	E1016-2269
Green	E1016-2271
White	E1016-2272
Blue	E1016-2294
Brown	E1016-2295
Orange	E1016-2270
Yellow	E1016-2268



E1016-2269

To order single packaged products, add a "K" suffix to the complete catalog number.

Dimensions:



Female Receptacle Assembly with Interlock Switch

Cable Size 350-500 MCM 600V AC/DC Up to 545A Continuous

J Series E1015/E1016, NEMA 3R Receptacle Covers

Features:

- Molded from colorfast material, color-coded for easy phase identification
- Mounts directly to new or existing receptacles
- Provides NEMA 3R protection
- High impact-resistant thermoplastic covers and bodies
- Stainless steel hardware
- Complete color offering

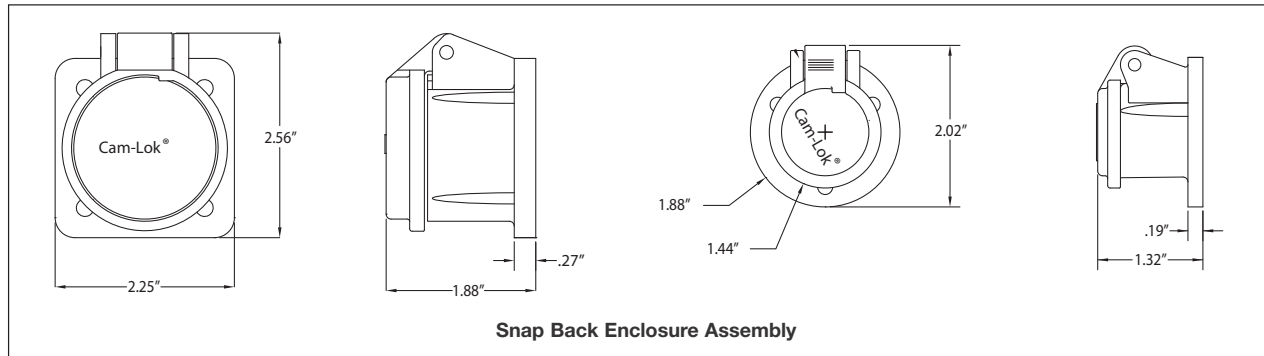
Material Characteristics:

- Body - thermoplastic
- Environmental rating: NEMA 3R
- Temperature rating: -40°C to 105°C

Ordering Information - NEMA 3R Receptacle Covers:

Color	E1015 Series Cat. #	E1016 Series Cat. #
Black	E1015SC-32	E1016SC-32
Red	E1015SC-36	E1016SC-36
Green	E1015SC-35	E1016SC-35
White	E1015SC-38	E1016SC-38
Blue	E1015SC-34	E1016SC-34
Yellow	E1015SC-37	E1016SC-37
Orange	E1015SC-39	E1016SC-39
Brown	E1015SC-31	E1016SC-31
Gray	E1015SC-33	E1016SC-33

Dimensions:



Dimensions:

