

Fiberglass Enclosures Accessories

DRAIN & BREATHER VENT



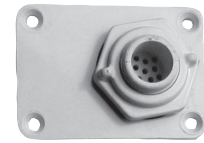
CHDV
(Drain Vent)



CHDVKIT
(Drain Vent Kit)

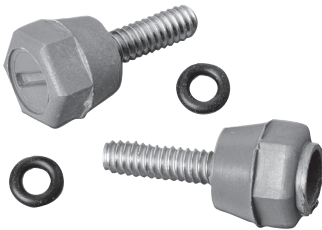


CHDVKIT4X
(Drain Vent Kit 4X)



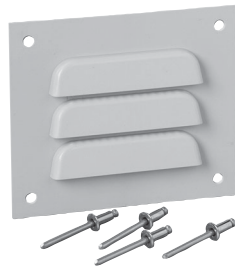
CHBVKIT4X
(Breather Vent Kit 4X)

ENCAPSULATED SCREWS



CHENCAP2PK
CHENCAP4PK

LOUVER PLATE VENT



CHLP1
CHLPKIT



CARRYING HANDLE



CHHANDLE

STAINLESS STEEL SCREWS



CHSS2PK
CHSS4PK

CORROSION INHIBITOR



CHCI21
Radius of Protection: 2 ft.
Normal Life Span: 1 yr.

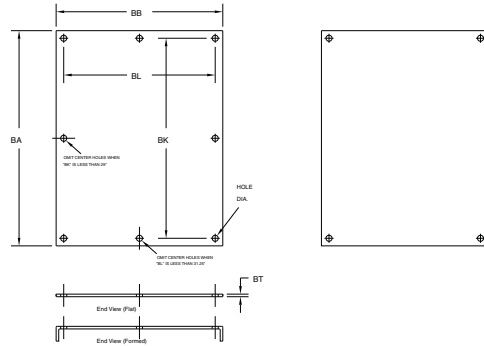
Fiberglass Enclosures Accessories

FIBERGLASS HOLE PLUG ASSEMBLY



Cat. #	Fits	Hole Dia. Range
FPLG1KIT	1/2" Dia. Hole	0.50" - 0.56"
	5/8" Dia. Hole	0.63" - 0.69"
	3/4" Dia. Hole	0.75" - 0.81"
FPLG2KIT	22mm Pushbutton	0.88" - 1.00"
	1/2" Conduit	
	3/4" Conduit	1.06" - 1.12"
FPLG3KIT	30mm Pushbutton	1.22" - 1.28"
	1" Conduit	1.38" - 1.50"
FPLG4KIT	1 1/4" Conduit	1.69" - 1.75"
	1 1/2" Conduit	2.00" - 2.12"
FPLG5KIT	2" Conduit	2.50" - 2.56"
FPLG6KIT	2 1/2" Conduit	3.00"
FPLG7KIT	3" Conduit	3.62"
FPLG8KIT	3 1/2" Conduit	4.12"
	4" Conduit	4.62"

Fiberglass Enclosure Mounting Plate Options:



Aluminum (SA)
Back Panels
Grade Aluminum
3003 H14 – No Finish

Fiberglass (FG)
Back Panels
All FG Back Panels
UL 94 V-0 Rated

Stainless Steel (SS)
Back Panels
Stainless Steel
Grade 304

Carbon Steel (C)
Back Panels
Carbon Steel
Grade 1010 HRS –
Painted White Enamel

Mounting Plates for Disconnect & Circuit Breaker Dimensions:

Only Available in Carbon Steel (Suffix C)	BA	BB	BK	BL	Panel Thickness BT	Panel Type	Hole Dia.	No. of Holes	Weight (Lbs.) Carbon Steel (Suffix C)	Fits Typical Enclosure Size
FMPC2016	16.88 (429)	13.38 (340)	15.25 (387)	11.25 (286)	0.13 (2)	Formed	0.31 (8)	4	7.3	20 x 16 Disconnect Enclosure
FMPC2412	20.88 (530)	9.38 (238)	19.25 (489)	7.25 (184)	0.13 (2)	Formed	0.50 (13)	4	6.5	24 x 12 Disconnect Enclosure
FMPC2424	20.88 (530)	21.38 (543)	19.25 (489)	19.25 (489)	0.13 (2)	Formed	0.50 (13)	4	14.0	24 x 24 Disconnect Enclosure
FMPC3024	26.88 (683)	21.38 (543)	25.25 (641)	19.25 (489)	0.13 (2)	Formed	0.50 (13)	4	19.0	30 x 24 Disconnect Enclosure
FMPC3630	32.88 (835)	27.38 (695)	31.25 (794)	25.25 (641)	0.13 (2)	Formed	0.50 (13)	5	27.0	36 x 30 Disconnect Enclosure

Fiberglass Enclosures Accessories

Mounting Plates for NEMA 3R, NEMA 4X & Large Fiberglass Enclosure Dimensions:

Cat. #	BA	BB	BK	BL	BT (SA)	BT (C)	Panel Type	Hole Dia.	No. of Holes	Weight (Lbs.) Aluminum (Suffix SA)	Weight (Lbs.) Carbon Steel (Suffix C)
FMPWM1610SA FMPWM1610C	13.00 (330)	8.50 (216)	12.00 (305)	7.50 (191)	0.09 (2)	0.105 (2.7)	Flat	0.31 (8)	4	1.0	3.3
FMPWM2016SA FMPWM2016C	17.00 (432)	13.00 (330)	15.25 (387)	11.25 (286)	0.09 (2)	0.105 (2.7)	Flat	0.50 (13)	4	2.0	6.7
FMPWM2412SA FMPWM2412C	21.00 (533)	9.00 (229)	19.25 (489)	7.25 (184)	0.09 (2)	0.105 (2.7)	Flat	0.50 (13)	4	4.5	8.7
FMPWM2420SA FMPWM2420C	21.00 (533)	17.00 (432)	19.25 (489)	15.25 (387)	0.13 (3)	0.105 (2.7)	Flat	0.50 (13)	4	5.0	10.8
FMPWM2424SA FMPWM2424C	21.00 (533)	21.00 (533)	19.25 (489)	19.25 (489)	0.13 (3)	0.105 (2.7)	Flat	0.50 (13)	4	5.5	13.4
FMPWM3020SA FMPWM3020C	27.00 (686)	17.00 (432)	25.25 (641)	15.25 (387)	0.13 (3)	0.105 (2.7)	Flat	0.50 (13)	4	5.8	14.0
FMPWM3024SA FMPWM3024C	27.00 (686)	21.00 (533)	25.25 (641)	19.25 (489)	0.13 (3)	0.105 (2.7)	Flat	0.50 (13)	4	7.0	17.0
FMPWM3630SA FMPWM3630C	33.00 (838)	27.00 (686)	31.25 (794)	25.25 (641)	0.13 (3)	0.105 (2.7)	Flat	0.50 (13)	4	11.0	27.0
FMPWM3636SA FMPWM3636C	31.00 (787)	33.00 (838)	29.00 (737)	31.00 (787)	0.13 (3)	0.105 (2.7)	Formed	0.50 (13)	6	13.0	33.0
FMPWM3648C	31.00 (787)	22.00 (559)	29.00 (737)	20.00 (508)	0.13 (3)	0.105 (2.7)	Flat	0.50 (13)	8	22.0	41.0
FMPWM4836SA FMPWM4836C	45.00 (1143)	33.00 (838)	43.25 (1099)	31.25 (794)	0.13 (3)	0.105 (2.7)	Formed	0.50 (13)	8	22.0	47.0
FMPWM6036SA FMPWM6036C	57.00 (1448)	33.00 (838)	55.25 (1403)	31.25 (794)	0.13 (3)	0.105 (2.7)	Formed	0.50 (13)	8	23.0	60.0
FMPWM7225C	64.00 (1626)	21.00 (533)	62.00 (1575)	19.00 (483)	0.13 (3)	0.105 (2.7)	Formed	0.50 (13)	10	30.0	43.0
FMPWM7249C	64.00 (1626)	22.00 (559)	62.00 (1575)	20.00 (508)	0.13 (3)	0.105 (2.7)	Formed	0.50 (13)	10	38.0	91.0

Mounting Plates for FSJ, FPB, FJ, FRCJ, FXDJ, FA Series Enclosures Dimensions:

Cat. #	BA	BB	BK	BL	BT (SA)	BT (FG)	BT (SS)	BT (C)	Panel Type	Hole Dia.	No. of Holes	Weight (oz.) Alum. (Suffix SA)	Weight (oz.) Fiberglass (Suffix FG)	Weight (oz.) Stainless (Suffix SS)	Weight (oz.) Carbon Steel (Suffix C)
FMP0604SA FMP0604FG FMP0604SS FMP0604C	4.88 (124)	2.88 (73)	4.25 (108)	2.25 (57)	0.080 (2)	0.125 (3)	0.060 (2)	0.075 (2)	Flat	0.25 (6)	4	2	2	5	5
FMP0808SA FMP0808FG FMP0808SS FMP0808C	6.88 (175)	6.88 (175)	6.25 (159)	6.25 (159)	0.080 (2)	0.125 (3)	0.060 (2)	0.075 (2)	Flat	0.25 (6)	4	5	5	15	15
FMP0906SA FMP0906FG FMP0906SS FMP0906C	8.25 (210)	4.88 (124)	7.63 (194)	4.25 (108)	0.080 (2)	0.125 (3)	0.060 (2)	0.075 (2)	Flat	0.25 (6)	4	5	N/A	N/A	14
FMP1008SA FMP1008FG FMP1008SS FMP1008C	8.88 (225)	6.88 (175)	8.25 (210)	6.25 (159)	0.080 (2)	0.125 (3)	0.060 (2)	0.075 (2)	Flat	0.25 (6)	4	8	8	19	21
FMP1210SA FMP1210FG FMP1210SS FMP1210C	10.88 (276)	8.88 (225)	10.25 (260)	8.25 (210)	0.080 (2)	0.125 (3)	0.060 (2)	0.075 (2)	Flat	0.25 (6)	4	12	14	30	33
FMP1212SA FMP1212FG FMP1212SS FMP1212C	10.88 (276)	10.88 (276)	10.25 (260)	10.25 (260)	0.080 (2)	0.125 (3)	0.060 (2)	0.075 (2)	Flat	0.25 (6)	4	16	18	37	38

Fiberglass

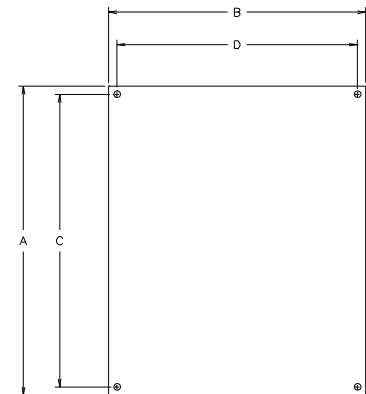
Fiberglass Enclosures Accessories

Mounting Plates for FSJ, FPB, FJ, FRCJ, FXDJ, FA Series Enclosures Dimensions:

Cat. #	BA	BB	BK	BL	BT (SA)	BT (FG)	BT (SS)	BT (C)	Panel Type	Hole Dia.	No. of Holes	Weight (oz.) Alum. (Suffix SA)	Weight (oz.) Fiberglass (Suffix FG)	Weight (oz.) Stainless (Suffix SS)	Weight (oz.) Carbon Steel (Suffix C)
FMP0606SA FMP0606FG FMP0606SS FMP0606C	4.88 (124)	4.88 (124)	4.25 (108)	4.25 (108)	0.080 (2)	0.125 (3)	0.060 (2)	0.075 (2)	Flat	0.25 (6)	4	3	3	8	8
FMP0706SA FMP0706FG FMP0706SS FMP0706C	6.00 (152)	4.88 (124)	5.38 (137)	4.25 (108)	0.080 (2)	0.125 (3)	0.060 (2)	0.075 (2)	Flat	0.25 (6)	4	4	N/A	N/A	10
FMP0806SA FMP0806FG FMP0806SS FMP0806C	6.88 (175)	4.88 (124)	6.25 (159)	4.25 (108)	0.080 (2)	0.125 (3)	0.060 (2)	0.075 (2)	Flat	0.25 (6)	4	4	4	12	12
FMP1407SA FMP1407FG FMP1407SS FMP1407C	12.88 (327)	5.88 (149)	12.25 (311)	5.25 (133)	0.080 (2)	0.125 (3)	0.060 (2)	0.075 (2)	Flat	0.25 (6)	4	14	14	32	34
FMP1412SA FMP1412FG FMP1412SS FMP1412C	12.88 (327)	10.88 (276)	12.25 (311)	10.25 (260)	0.080 (2)	0.125 (3)	0.060 (2)	0.075 (2)	Flat	0.25 (6)	4	18	20	45	48
FMP1614SA FMP1614FG FMP1614SS FMP1614C	14.88 (378)	12.88 (327)	14.25 (362)	12.25 (311)	0.080 (2)	0.125 (3)	0.060 (2)	0.075 (2)	Flat	0.25 (6)	4	24	23	60	66
FMP1816SA FMP1816FG FMP1816SS FMP1816C	16.88 (429)	14.88 (378)	16.25 (413)	14.25 (362)	0.080 (2)	0.125 (3)	0.060 (2)	0.075 (2)	Flat	0.25 (6)	4	31	32	88	87
FMP2016SA FMP2016FG FMP2016SS FMP2016C	18.88 (479)	14.88 (378)	18.25 (463)	14.25 (362)	0.080 (2)	0.125 (3)	0.060 (2)	0.075 (2)	Flat	0.25 (6)	4	36	34	98	97

Cover Panel Dimensions:

Cat. #	A	B	C	D	Panel Thk.	Panel Type	Hole Dia.	No. of Holes
FACP0606SA	5.64 (143)	5.64 (143)	5.02 (127)	5.02 (127)	0.080 (2)	Flat	0.25 (6)	4
FACP0806SA	7.68 (195)	5.64 (143)	7.05 (179)	5.02 (127)	0.080 (2)	Flat	0.25 (6)	4
FACP0808SA	7.68 (195)	7.68 (195)	7.05 (179)	7.05 (179)	0.080 (2)	Flat	0.25 (6)	4
FACP1008SA	9.71 (247)	7.71 (196)	9.08 (231)	7.08 (180)	0.080 (2)	Flat	0.25 (6)	4
FACP1210SA	11.74 (298)	9.74 (247)	11.12 (282)	9.12 (232)	0.080 (2)	Flat	0.25 (6)	4
FACP1412SA	13.78 (350)	11.78 (299)	13.15 (334)	11.15 (283)	0.080 (2)	Flat	0.25 (6)	4
FACP1614SA	15.81 (402)	13.81 (351)	15.18 (386)	13.18 (334)	0.080 (2)	Flat	0.25 (6)	4
FACP1816SA	17.94 (456)	15.94 (405)	17.31 (440)	15.31 (389)	0.080 (2)	Flat	0.25 (6)	4
FACP2016SA	19.76 (502)	15.76 (400)	19.13 (486)	15.13 (384)	0.080 (2)	Flat	0.25 (6)	4



Note: Cover panel kit includes cover panel and mounting hardware.