

3P

Arktite® WSRD SM S901 Stainless Steel Interlocked Receptacles

Fused and Non-fused

30, 60 and 100 Amp
Enclosure Type 3, 4, 4X, 12
IP66
UL and cUL Listed

Watertight
Corrosion-Resistant

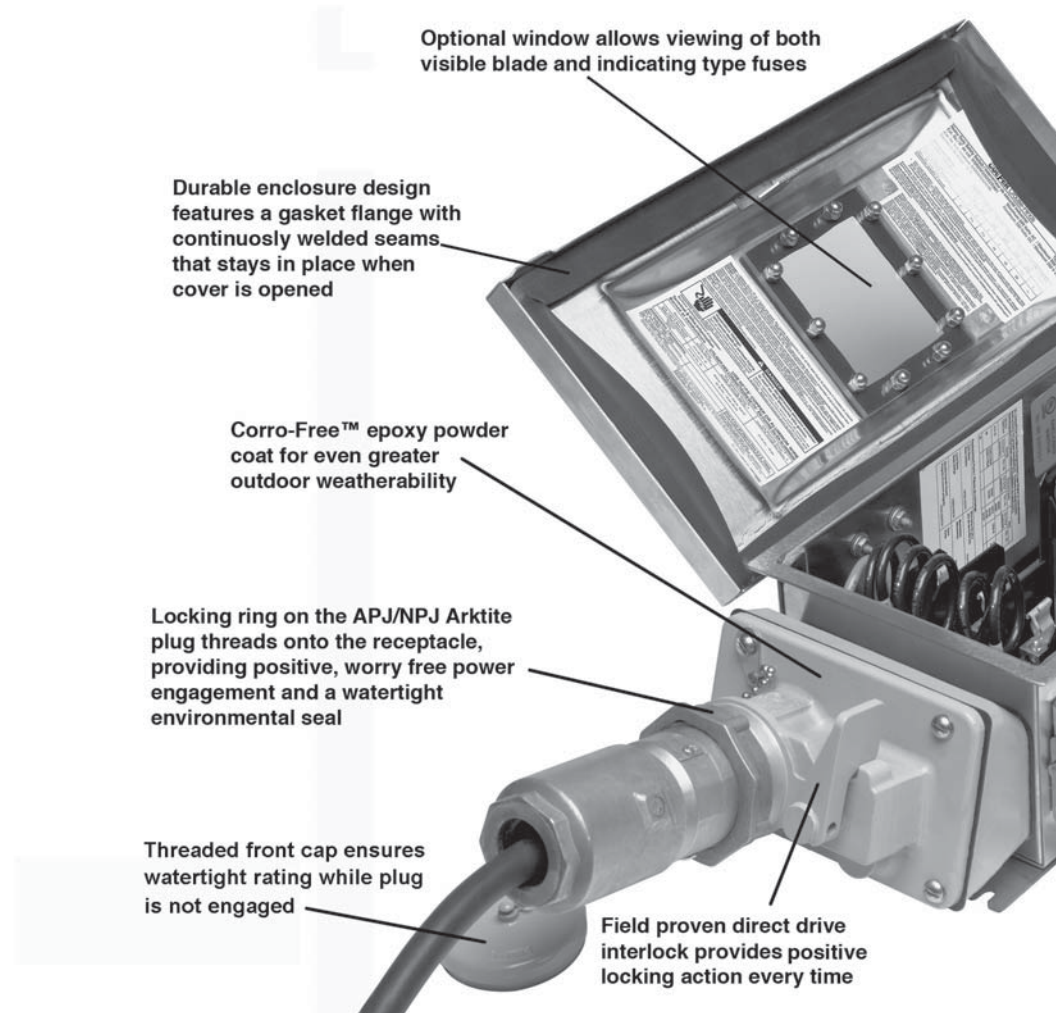
WSRD SM S901 Series Stainless Steel Arktite® Interlocked Receptacles

Eaton's Crouse-Hinds Arktite Stainless Steel Interlocks prevent engagement and disengagement of the plug under load, providing safe portable connections and extended product life.

Available in 30–100 Amp in both fused and non-fused versions, the Stainless Steel Interlock is rated Enclosure Type 4X watertight and features an optional viewing window.

Arktite Stainless Steel Interlocked Receptacles:

- Supply power to portable or fixed electrical equipment such as welders, compressors, conveyors, portable tools, lighting systems and similar equipment.
- Are used in damp or corrosive locations.
- Are ideal for use in wet locations and hosedown areas.



Additional Features and Benefits:

- Heavy duty Arktite receptacle is compatible with existing Eaton's Crouse-Hinds Arktite plugs of same rating and configuration
- Self-wiping, naval brass contacts in receptacle assure reliable performance and long, dependable life
- Stainless steel interior hardware
- Ground bar supplied as standard and connected to 4th wire in receptacle
- UL and cUL Listed

Ordering Information: 3-Pole, 4-Wire, 600 VAC

Amps	Cat. #	Description	Weight (lbs.)	Eaton's Crouse-Hinds Mating Arktite Plug Cat. #
30	WSRDW3352 SM S901	Fused with Window	24	APJ3485 & NPJ3484
30	WSRD33542 SM S901	Non-fused	22	APJ3485 & NPJ3484
30	WSRDW33542 SM S901	Non-fused with Window	22	APJ3485 & NPJ3484
60	WSRDW6352 SM S901	Fused with Window	30	APJ6485 & NPJ6485
60	WSRD63542 SM S901	Non-fused	29	APJ6485 & NPJ6485
60	WSRDW63542 SM S901	Non-fused with Window	29	APJ6485 & NPJ6485
100	WSRDW10352 SM S901	Fused with Window	36	APJ10487 & NPJ10487
100	WSRD103542 SM S901	Non-fused	35	APJ10487 & NPJ10487
100	WSRDW103542 SM S901	Non-fused with Window	35	APJ10487 & NPJ10487

Crouse-Hinds
by **EATON**

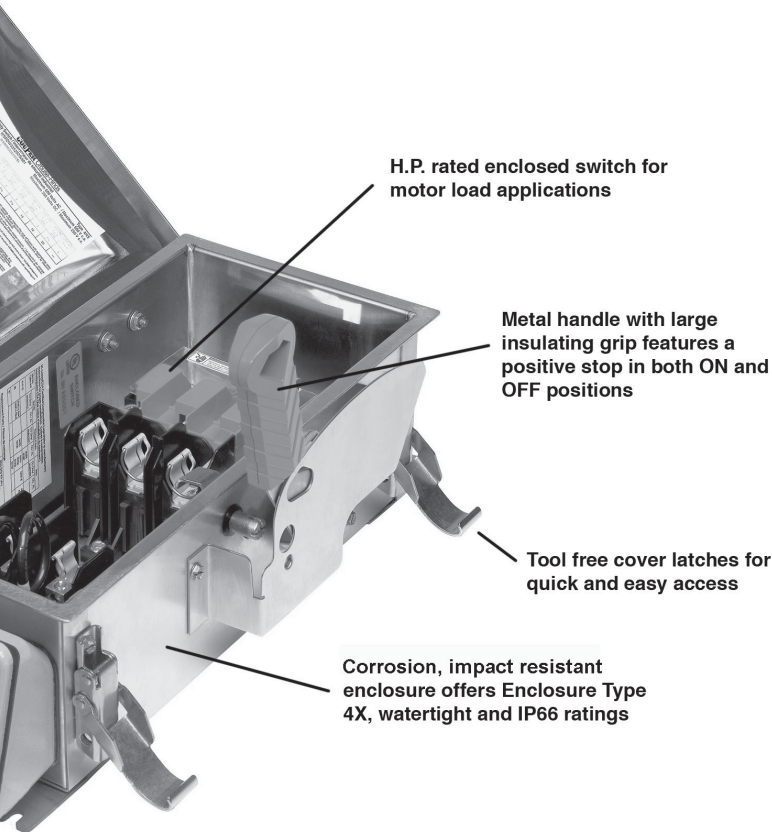
Arktite® WSRD SM S901 Stainless Steel Interlocked Receptacles

Fused and Non-fused

30, 60 and 100 Amp
Enclosure Type 3, 4, 4X, 12
IP66
UL and cUL Listed

Watertight
Corrosion-Resistant

3P



H.P. rated enclosed switch for motor load applications

Metal handle with large insulating grip features a positive stop in both ON and OFF positions

Tool free cover latches for quick and easy access

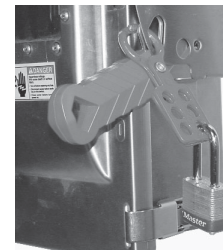
Corrosion, impact resistant enclosure offers Enclosure Type 4X, watertight and IP66 ratings



Optional window allows viewing of both visible blade and indicating type fuses.



Plug locks into receptacle, providing positive, worry-free power engagement as well as watertight protection.



Complies with OSHA lockout/tagout requirements.

Certifications and Compliances:

- UL Listed – (UL Standards 98, 1682)
- cUL Listed (Certified by UL to CSA Standards C22.2 Nos. 4, 182.1)
- Enclosure Type 3, 4, 4X, 12
- IP66 Enclosure

Standard Materials:

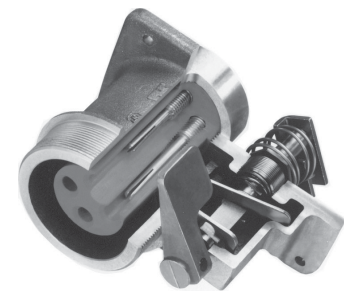
- Enclosure – Type 304 stainless steel
- Hardware – stainless steel
- Receptacle Housing – aluminum
- Power Contacts – naval brass
- Interlock Mechanism – stainless steel

Standard Finishes:

- Stainless Steel – natural
- Aluminum – Corro-free™ epoxy powder
- Brass – natural

Options:

Description	Suffix
• Factory Installed Auxiliary Contacts.....	S483
• Rotated Interior (22½° to right).....	S4



Heavy-duty, epoxy coated cast aluminum receptacle with stainless steel interlocking mechanism for superior durability and corrosion resistance.

3P

3P Arktite® WSRD SM S901 Stainless Steel Interlocked Receptacles Fused and Non-fused

30, 60 and 100 Amp
Enclosure Type 3, 4, 4X, 12
IP66
UL and cUL Listed

Watertight
Corrosion-Resistant

Horsepower Ratings

Cat. #	Amps	Fusing	240 VAC (1 PH)	240 VAC (3 PH)	480 VAC (1 PH)	480 VAC (3 PH)	600 VAC (1 PH)	600 VAC (3 PH)	250 VDC
WSRD33542 SM S901	30	Non-fused	5	10	7.5	20	10	30	5
WSRDW33542 SM S901	30	Non-fused	5	10	7.5	20	10	30	5
WSRDW3352 SM S901	30	Fused	1.5 (3)	3 (7.5)	3 (7.5)	5 (15)	3 (10)	7.5 (20)	5
WSRD63542 SM S901	60	Non-fused	10	20	20	50	25	60	10
WSRDW63542 SM S901	60	Non-fused	10	20	20	50	25	60	10
WSRDW6352 SM S901	60	Fused	3 (10)	7.5 (15)	5 (20)	15 (30)	10 (25)	15 (50)	10
WSRD103542 SM S901	100	Non-fused	15	40	30	75	40	100	20
WSRDW103542 SM S901	100	Non-fused	15	40	30	75	40	100	20
WSRDW10352 SM S901	100	Fused	7.5 (15)	15 (30)	10 (30)	25 (60)	15 (40)	30 (75)	20

Note:

Values for Non-Fused units are maximum horsepower.

Values for Fused units are standard horsepower with standard fuse and (maximum horsepower with time delay).

Dimensions

In Inches:

