

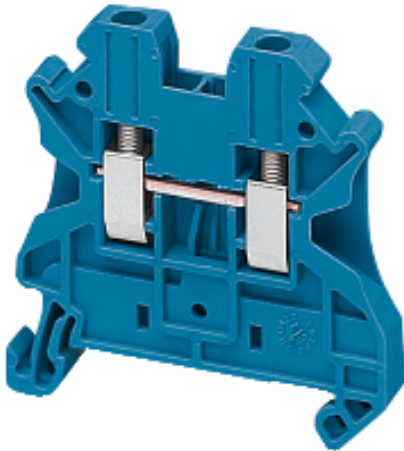
# NSYTRV22BL

Linery passthrough terminal block - 2.5mm<sup>2</sup> 24A  
single-level 1x1 screw - blue

Product availability : Stock - Normally stocked in distribution facility



Price\* : 1.40 USD



## Main

Range	Linery
Product name	Linery TR
Product or component type	Terminal block
Device short name	TRV
Accessory / separate part category	Connection accessory
Terminal block type	Passthrough
Terminal block level	1
Mounting mode	Clip-on
Nominal cross section	0 in <sup>2</sup> (2.5 mm <sup>2</sup> )
Length	1.88 in (47.7 mm)
Colour	Blue
Quantity per set	Set of 50

## Complementary

Width	0.2 in (5.2 mm)
Height	1.87 in (47.5 mm)
Connections - terminals	1 x screw terminal : upstream (M3) 1 x screw terminal : downstream (M3)
Number of terminals	2
Connection position	Sideways
Number of measurement input	2
Cable cross section	0.2...2.5 mm <sup>2</sup> , flexible with cable end 0.14...4 mm <sup>2</sup> , solid with cable end 0.14...4 mm <sup>2</sup> , solid without cable end 0.14...4 mm <sup>2</sup> , flexible without cable end
Tightening torque	4.42...5.31 lbf.in (0.5...0.6 N.m)
Wire stripping length	0.35 in (9 mm)

Tool type	Connection : screwdriver Disconnection : screwdriver
System Voltage	600 V CSA 690 V conforming to ATEX Exe II Ex II 2 GD 600 V cURus 1000 V conforming to EN/IEC 60947-7-1
[Ie] rated operational current	20 A CSA 20 A cURus 22 A conforming to ATEX Exe II Ex II 2 GD 24 A conforming to EN/IEC 60947-7-1
Material	Polyamide 6/6 (insulating case) Copper alloy (connector and screw) Copper alloy (commoning link) Chromium-nickel steel (spring)
Dielectric loss	0.01 at 1 MHz conforming to IEC 60250 0.01 at 1 MHz conforming to VDE 0303-T4
Dielectric constant	3.7 at 1 MHz
Resistivity	10000 M $\Omega$ .m conforming to IEC 60093 10000 M $\Omega$ .m conforming to VDE 0303-T30
Surface resistance	1000 G $\Omega$ conforming to IEC 60093 1000 G $\Omega$ conforming to VDE 0303-T30
Creep resistance	500 CTI (> 400 kV) conforming to IEC 60093 500 CTI (> 400 kV) conforming to VDE 0303-T30
Flame retardance	V0, thickness 0.03 in (0.8 mm) conforming to UL 94
Product weight	0.29 oz (8.2 g)
Range compatibility	Prisma - G Prisma - P Pragma Prisma - PH Prisma - Pack Spacial Kaedra TeSys
Product compatibility	Spacial enclosures

## Environment

Product certifications	ATEX CSA cURus DNV GL LR VDE IEC-Ex EAC
Dielectric strength	1000 V conforming to IEC 60243-1
Ambient air temperature for operation	-40...266 °F (-40...130 °C) conforming to IEC 60216-1 -40...266 °F (-40...130 °C) conforming to VDE 0304-T21

## Ordering and shipping details

Category	21715 - IEC TERMINAL BLOCKS-NSY,AM1,DF6,GK1
Discount Schedule	CP5
GTIN	00785901943303
Nbr. of units in pkg.	50
Package weight(Lbs)	0.02
Returnability	Y
Country of origin	DE

## Offer Sustainability

Sustainable offer status	Green Premium product
RoHS (date code: YYWW)	Compliant - since 1052 - Schneider Electric declaration of conformity

 Schneider Electric declaration of conformity

REACH	Reference not containing SVHC above the threshold Reference not containing SVHC above the threshold
Product environmental profile	Available
Product end of life instructions	Need no specific recycling operations

Contractual warranty

Warranty period	18 months
-----------------	-----------