

# Product data sheet

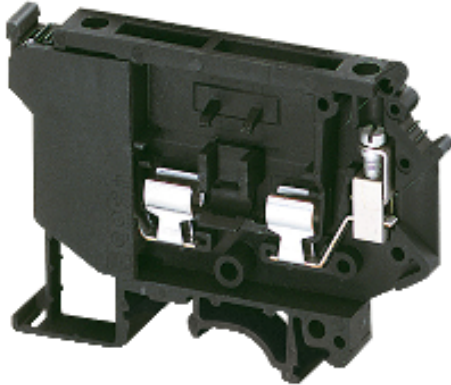
## Characteristics

# NSYTRV42SF5LD

Fuse disc. terminal, 4mm<sup>2</sup> 6.3A, 5x20mm fuse, LED 12-30V, 1x1 screw, black

Product availability : Stock - Normally stocked in distribution facility

Price\* : 16.10 USD



### Main

Range	Linery
Product name	Linery TR
Product or component type	Terminal block
Device short name	TRV
Terminal block type	Fused disconnect
Terminal block level	1
Mounting mode	Clip-on
Nominal cross section	0.01 in <sup>2</sup> (4 mm <sup>2</sup> )
Length	2.85 in (72.5 mm)
Colour	Black
Quantity per set	Set of 50

### Complementary

Fuse size	5 x 20 mm
Width	0.32 in (8.2 mm)
Height	2.22 in (56.5 mm)
Connections - terminals	1 x screw terminal : upstream 1 x screw terminal : downstream
Number of terminals	2
Connection position	Sideways
Number of measurement input	0
Cable cross section	0...0.01 in <sup>2</sup> (0.2...4 mm <sup>2</sup> ), flexible without 0.2...4 mm <sup>2</sup> , solid
Tightening torque	0.5...0.8 N.m
Wire stripping length	0.31 in (8 mm)
Tool type	Connection : screwdriver Disconnection : screwdriver

System Voltage	600 V CSA 600 V cURus 500 V conforming to EN/IEC 60947-7-1
[Ie] rated operational current	6.3 A conforming to EN/IEC 60947-7-1 6.3 A CSA 12 A cURus
Material	Polyamide 6/6 (insulating case)
Dielectric loss	0.01 at 1 MHz conforming to IEC 60250 0.01 at 1 MHz conforming to VDE 0303-T4
Dielectric constant	3.7 at 1 MHz
Resistivity	10000 MΩ.m MΩ.m conforming to IEC 60093 10000 MΩ.m MΩ.m conforming to VDE 0303-T30
Surface resistance	1000 GΩ GΩ conforming to IEC 60093 1000 GΩ GΩ conforming to VDE 0303-T30
Creep resistance	500 CTI (> 400 kB) conforming to IEC 60093 500 CTI (> 400 kB) conforming to VDE 0303-T30
Flame retardance	V0, thickness 0.03 in (0.8 mm) conforming to UL 94
Product weight	0.71 oz (20 g)
Provided equipment	Light indicator (12...30 V)
Range compatibility	Prisma - G Prisma - P Pragma Prisma - PH Prisma - Pack Spacial Kaedra TeSys
Product compatibility	Spacial enclosures


## Environment

Product certifications	CSA cURus EAC
Dielectric strength	1000 V conforming to IEC 60243-1
Ambient air temperature for operation	-40...266 °F (-40...130 °C) conforming to IEC 60216-1 -40...266 °F (-40...130 °C) conforming to VDE 0304-T21

## Ordering and shipping details

Category	21715 - IEC TERMINAL BLOCKS-NSY,AM1,DF6,GK1
Discount Schedule	CP5
GTIN	00785901943709
Nbr. of units in pkg.	50
Package weight(Lbs)	4.0000000000000001E-2
Returnability	Y
Country of origin	TR

## Offer Sustainability

Sustainable offer status	Not Green Premium product
RoHS (date code: YYWW)	Compliant - since 1052 - Schneider Electric declaration of conformity  <a href="#">Schneider Electric declaration of conformity</a>
Product end of life instructions	Need no specific recycling operations

## Contractual warranty

Warranty period	18 months
-----------------	-----------