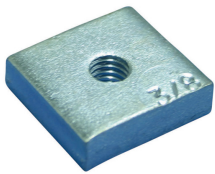
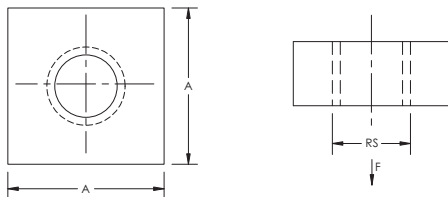


# 355N Insert Nut for 355 Concrete Insert – 355N0087EG



- Insert nut for 355 Concrete Insert
- Conforms with Federal Specification WW-H-171 (Type 19), Manufacturers Standardization Society ANSI®/MSS-SP-58 (Type 18)



Part Number	355N0087EG
Material	Steel
Finish	Electrogalvanized
Rod Size (RS)	7/8"
A	1 1/4"
Pipe Size	10" Max
Static Load (F)	1,200 lb
Standard Packaging Quantity	100 pc
UPC	78285636432

Reduced support spacing is required.  
Install in accordance with applicable code.

ANSI is a registered trademark of American National Standards Institute.

#### WARNING

Pentair products shall be installed and used only as indicated in Pentair's product instruction sheets and training materials. Instruction sheets are available at [erico.pentair.com](http://erico.pentair.com) and from your Pentair customer service representative. Improper installation, misuse, misapplication or other failure to completely follow Pentair's instructions and warnings may cause product malfunction, property damage, serious bodily injury and death and/or void your warranty.

© 2017 Pentair All rights reserved

Pentair, CADDY, CADWELD, CRITEC, ERICO, ERIFLEX, ERITECH and LENTON are owned by Pentair or its global affiliates.

All other trademarks are the property of their respective owners. Pentair reserves the right to change specifications without prior notice.

