

# Unicode™ 2 Series Push Buttons

## Components for Increased Safety Enclosures

**NEC/CEC:**  
 Class I, Division 2, Groups A, B, C, D  
 Class I, Zone 1, AEx de IIC  
 Class I, Zone 1, AEx e IIC

**NEC/CEC:**  
 Class II, Division 2, Groups F, G  
 Class III  
 Type 4X/IP66 ①

**ATEX/IECEX:**  
 Zone 1 and 2 – 21 and 22  
 Ⓜ II 2 GD  
 IP66 – IK10

### Features

- Can be equipped with up to three Unicode 2 Series Contact Blocks (UCB) Series contact blocks.
- Globally certified.
- Available in TS35 rail mounted or panel mounted.

### Standard Materials

- Body: polyamide
- Seal: ethylene propylene diene Monomer (M-class) rubber (EPDM)

### NEC/CEC Certifications and Compliances

- Certification Type TCe
  - Operating Temperature: -40 °C to +60 °C (-40 °F to +140 °F)
  - Ingress Protection (solid and liquid): IP66 and Type 4X ①
  - CAN/CSA Standards: C22.2 No. 0-M91, No. 14-05, No. 94-M91, No. 213-M1987, No. 60079-0:07, No. 60079-1:07, No. 60529:05, E60079-7-03, E61241-1-1:02
  - UL Standards: UL 508, UL 50E, UL 60079-0, UL 60079-1, UL 60079-7
  - Other Standards: ANSI/ISA 12.12.01-2011, ANSI/ISA 61241-0 (12.10.02)-2006, ANSI/ISA 61241-1(12.10.03)-2006
  - CSA Certificate: 2358701

### ATEX/IECEX Certifications and Compliances

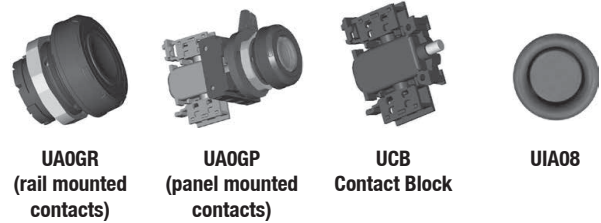
- Certification Type TCe
  - Gas: Zone 1 and 2
    - Conforming to ATEX 94/9/CE: Ⓜ II 2 G
    - Type of Protection: Ex e IIC Gb
  - Dust: Zone 21 and 22
    - Conforming to ATEX 94/9/CE: Ⓜ II 2 D
    - Type of Protection: Ex tb IIIC Db
- Surface Temperature: -40 °C to +60 °C (-40 °F to +140 °F)
- CE Declaration of Conformity: 5C242
- ATEX Certificate: LCIE 09 ATEX 3010U
- IECEx Certificate: IECEx LCI 09.0011U
- Index of Protection according EN/IEC 60529: IP66
- Impact Resistance (shock): IK10

### EURASEC Certification

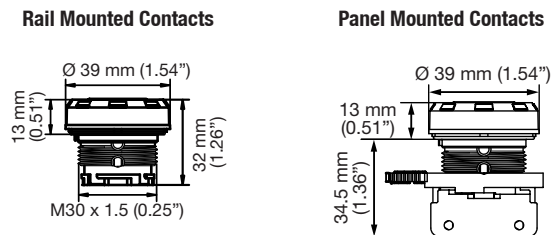
- EURASEC RU C-FR. Г505.В00909

### Other Certification ②

- INMETRO Certificate: BVC 10.0044-U



### Dimensions in Millimeters (Inches)



① Overall hazardous location and ingress protection rating depends on the rating of the optional certified components used.

② INMETRO certification available on special request only. Contact your local sales representative for more information.

# Unicode™ 2 Series Push Buttons

## Components for Increased Safety Enclosures

**NEC/CEC:**  
Class I, Division 2, Groups A, B, C, D  
Class I, Zone 1, AEx de IIC  
Class I, Zone 1, AEx e IIC

**NEC/CEC:**  
Class II, Division 2, Groups F, G  
Class III  
Type 4X/IP66 ①

**ATEX/IECEX:**  
Zone 1 and 2 – 21 and 22  
Class II 2 GD  
IP66 – IK10

CONTROLS: NEC/CEC, ATEX/IECEX INCREASED SAFETY CONTROL STATIONS

	Weight in Kilograms (Pounds)		Volume dm <sup>3</sup> (in <sup>3</sup> )		Pack	Catalog Number	
	Rail Mounted	Panel Mounted	Rail Mounted	Panel Mounted		Rail Mounted	Panel Mounted
<b>Spring Return - Push Button (contact block to be ordered separately)</b> For legend plates, guards and blanking plugs see accessories pages.							
Red + Green	0.03 (0.06)	0.05 (0.11)	0.06 (3.66)	0.17 (10.37)	1	UA0RGR	UA0RGP
Green	0.03 (0.06)	0.05 (0.11)	0.06 (3.66)	0.17 (10.37)	1	UA0GR	UA0GP
Red	0.03 (0.06)	0.05 (0.11)	0.06 (3.66)	0.17 (10.37)	1	UA0RR	UA0RP
White	0.03 (0.06)	0.05 (0.11)	0.06 (3.66)	0.17 (10.37)	1	UA0WR	UA0WP
Blue	0.03 (0.06)	0.05 (0.11)	0.06 (3.66)	0.17 (10.37)	1	UA0BR	UA0BP
Yellow	0.03 (0.06)	0.05 (0.11)	0.06 (3.66)	0.17 (10.37)	1	UA0YR	UA0YP
<b>1-Pole Contact Blocks</b>							
1 x NO						UCB5R	UCB5P
1 x NC	0.032 (0.071)		0.06 (3.66)		1	UCB9R	UCB9P
<b>Spare Parts</b>							
Rail to panel mounted conversion adaptor	0.02 (0.04)		0.08 (4.88)		1		UPMA

Marking	Color	Weight kg (lb)	Volume dm <sup>3</sup> (in <sup>3</sup> )	Pack	Catalog Number
<b>Set of Five Spare Inserts</b>					
(unmarked)	Green	0.01 (0.02)	0.01 (0.61)	1	UIAG
(unmarked)	Red	0.01 (0.02)	0.01 (0.61)	1	UIAR
(unmarked)	Yellow	0.01 (0.02)	0.01 (0.61)	1	UIAY
(unmarked)	White	0.01 (0.02)	0.01 (0.61)	1	UIAW
(unmarked)	Blue	0.01 (0.02)	0.01 (0.61)	1	UIAB
(unmarked)	Black	0.01 (0.02)	0.01 (0.61)	1	UIAN
ON	Green	0.01 (0.02)	0.01 (0.61)	1	UIA01
OFF	Red	0.01 (0.02)	0.01 (0.61)	1	UIA02
START	Green	0.01 (0.02)	0.01 (0.61)	1	UIA03
STOP	Red	0.01 (0.02)	0.01 (0.61)	1	UIA04
MARCHE	Green	0.01 (0.02)	0.01 (0.61)	1	UIA05
ARRET	Red	0.01 (0.02)	0.01 (0.61)	1	UIA06
I	Green	0.01 (0.02)	0.01 (0.61)	1	UIA07
O	Red	0.01 (0.02)	0.01 (0.61)	1	UIA08

① Overall hazardous location and ingress protection rating depends on the rating of the optional certified components used.

# Unicode™ 2 Series Mushroom Push Buttons

## Components for Increased Safety Enclosures

**NEC/CEC:**  
 Class I, Division 2, Groups A, B, C, D  
 Class I, Zone 1, AEx de IIC  
 Class I, Zone 1, AEx e IIC

**NEC/CEC:**  
 Class II, Division 2, Groups F, G  
 Class III  
 Type 4X/IP66 ①

**ATEX/IECEX:**  
 Zone 1 and 2 – 21 and 22  
 II 2 GD  
 IP66 – IK10

CONTROLS: NEC/CEC, ATEX/IECEX INCREASED SAFETY CONTROL STATIONS

### Features

- Can be equipped with up to three Unicode 2 Series Contact Blocks (UCB) contact blocks.
- Globally certified.
- Available in TS35 rail mounted or panel mounted.

### Standard Materials

- Body: polyamide
- Seal: ethylene propylene diene Monomer (M-class) rubber (EPDM)

### NEC/CEC Certifications and Compliances

- Certification Type TCe
  - Operating Temperature: -40 °C to +60 °C (-40 °F to +140 °F)
  - Ingress Protection (solid and liquid): IP66 and Type 4X ①
  - CAN/CSA Standards: C22.2 No. 0-M91, No. 14-05, No. 94-M91, No. 213-M1987, No. 60079-0:07, No. 60079-1:07, No. 60529:05, E60079-7-03, E61241-1-1:02
  - UL Standards: UL 508, UL 50E, UL 60079-0, UL 60079-1, UL 60079-7
  - Other Standards: ANSI/ISA 12.12.01-2011, ANSI/ISA 61241-0 (12.10.02)-2006, ANSI/ISA 61241-1(12.10.03)-2006
  - CSA Certificate: 2358701

### ATEX/IECEX Certifications and Compliances

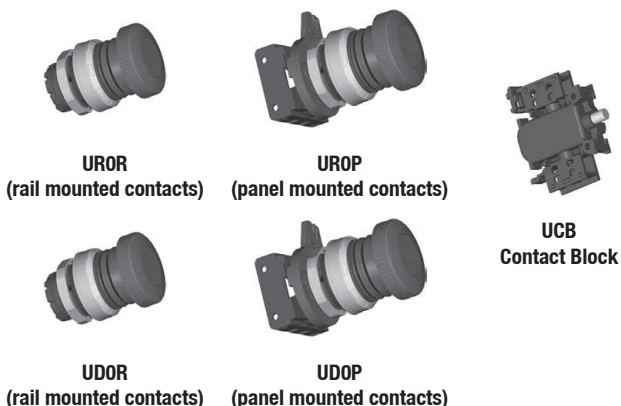
- Certification Type TCe
  - Gas: Zone 1 and 2
    - Conforming to ATEX 94/9/CE: II 2 G
    - Type of Protection: Ex e IIC Gb
  - Dust: Zone 21 and 22
    - Conforming to ATEX 94/9/CE: II 2 D
    - Type of Protection: Ex tb IIIC Db
- Surface Temperature: -40 °C to +60 °C (-40 °F to +140 °F)
- CE Declaration of Conformity: 5C242
- ATEX Certificate: LCIE 09 ATEX 3010U
- IECEx Certificate: IECEx LCI 09.0011U
- Index of Protection according EN/IEC 60529: IP66
- Impact Resistance (shock): IK10

### EURASEC Certification

- EURASEC RU C-FR. Г505.В00909

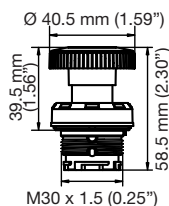
### Other Certification ②

- INMETRO Certificate: BVC 10.0044-U

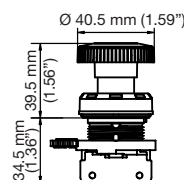


### Dimensions in Millimeters (Inches)

#### Rail Mounted Contacts



#### Panel Mounted Contacts



① Overall hazardous location and ingress protection rating depends on the rating of the optional certified components used.  
 ② INMETRO certification available on special request only. Contact your local sales representative for more information.

# Unicode™ 2 Series Mushroom Push Buttons

## Components for Increased Safety Enclosures

### NEC/CEC:

Class I, Division 2, Groups A, B, C, D  
Class I, Zone 1, AEx de IIC  
Class I, Zone 1, AEx e IIC

### NEC/CEC:

Class II, Division 2, Groups F, G  
Class III  
Type 4X/IP66 ①

### ATEX/IECEX:

Zone 1 and 2 – 21 and 22  
Ⓢ II 2 GD  
IP66 – IK10

CONTROLS: NEC/CEC, ATEX/IECEX INCREASED SAFETY CONTROL STATIONS

	Weight kg (lb)		Volume dm <sup>3</sup> (in <sup>3</sup> )		Pack	Catalog Number	
	Rail Mounted	Panel Mounted	Rail Mounted	Panel Mounted		Rail Mounted	Panel Mounted
<b>Spring Return Mushroom Head Push Button (contact block to be ordered separately)</b>							
<i>Legend plates, guards, blanking plugs (see Accessories page).</i>							
Red	0.045 (0.099)	0.06 (0.13)	0.26 (15.87)	0.12 (7.32)	1	UR0R	UR0P
Black	0.045 (0.099)	0.06 (0.13)	0.26 (15.87)	0.12 (7.32)	1	UB0R	UB0P
<b>Push-Pull Mushroom Head Push Button (contact block to be ordered separately)</b>							
<i>Legend plates, guards, blanking plugs (see Accessories page).</i>							
Red Emergency Stop	0.045 (0.099)	0.06 (0.13)	0.12 (7.32)	0.26 (15.87)	1	UD0R	UD0P
<b>1-Pole Contact Blocks</b>							
1 x NO						UCB5R	UCB5P
	0.032 (0.071)		0.06 (3.66)		1		
1 x NC						UCB9R	UCB9P
<b>Accessories</b>							
Rail to panel mounted conversion adaptor	0.02 (0.04)		0.08 (4.88)		1		UPMA

① Overall hazardous location and ingress protection rating depends on the rating of the optional certified components used.

# Unicode™ 2 Series Key Release Mushroom Push Buttons

## Components for Increased Safety Enclosures

**NEC/CEC:**  
 Class I, Division 2 Groups A, B, C, D  
 Class I, Zone 1, Ex e d IIC Gb  
 Class I, Zone 1, AEx e d IIC Gb  
 Class II, Division 1, Groups E, F, G

**NEC/CEC:**  
 Class II, Zone 21, Ex tb IIIC Db  
 Class II, Zone 21, AEx t IIIC Db  
 Class III, Division 1  
 IP6X

**ATEX/IECEx:**  
 Zone 1 and 2 – 21 and 22  
 Ⓜ II 2 GD  
 IP66 - IK10

CONTROLS: NEC/CEC, ATEX/IECEx INCREASED SAFETY CONTROL STATIONS

### Features

- Can be equipped with up to three Unicode 2 Series Contact Blocks (UCB) contact blocks.
- Globally certified.
- Available in TS35 rail mounted or panel mounted.

### Standard Materials

- Body: thermosetting plastic
- Seal: ethylene propylene diene Monomer (M-class) rubber (EPDM)

### NEC/CEC Certifications and Compliances

- Certification Type AUX
  - Rated Ambient Temperature: -55 °C to +70 °C (-67 °F to +158 °F)
- UL Standards: UL No. 61010-1 (2nd Edition), UL 60079-0 (5th Edition 2009), UL 60079-1 (6th Edition 2009), UL 60079-7 (Ed 4th 2008), UL 60079-31:2009
- UL Certificate: E184198
- CAN/CSA Standards: C22.2 No. 0-10, C22.2 No. 61010-1-04, C22.2 No 213 (2nd Edition), C22.2 No. 60079-0:07, C22.2 No. 60079-1:07, No. 60079-7:03, No. 60079-31:12, E61241-1-1:02, C22.2 No. 60529:05 (R 2010)
- CSA Certificate: 2661552
- Other Standards: ANSI/ISA-12.12.01 (2013), ANSI/ISA-61241-0 (12.10.02)-2006 (R2011), ANSI/ISA-61241-1 (12.10.03)-2006 (R2011), ANSI/IEC 60529-2004

### ATEX Certifications and Compliances

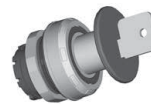
- Certification Type AUX
  - Gas: Zone 1 and 2
    - Conforming to ATEX 94/9/CE: Ⓜ II 2 G
    - Type of Protection: Ex e II
  - Dust: Zone 21 and 22
    - Conforming to ATEX 94/9/CE: Ⓜ II 2 D
    - Type of Protection: Ex tD A21
- Surface Temperature: -20 °C to +70 °C (-4 °F to +158 °F)
- CE Declaration of Conformity: 5C206
- ATEX Certificate: LCIE 00 ATEX 0002U
- Index of Protection according EN/IEC 60529: IP66
- Impact Resistance (shock): 7 Joules

### EURASEC Certification

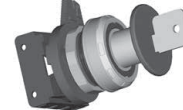
- EURASEC RU C-FR. Г605.В00909

### Other Certification ①

- INMETRO Certificate: BVC 11.0644-U



**UCOR**  
(rail mounted contacts)



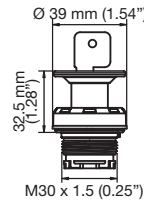
**UCOP**  
(panel mounted contacts)



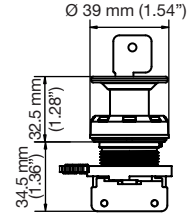
**UCB**  
Contact Block

### Dimensions in Millimeters (Inches)

#### Rail Mounted Contacts



#### Panel Mounted Contacts



① INMETRO certification available on special request only. Contact your local sales representative for more information.

# Unicode™ 2 Series Key Release Mushroom Push Buttons

## Components for Increased Safety Enclosures

**NEC/CEC:**

Class I, Division 2 Groups A, B, C, D  
 Class I, Zone 1, Ex e d IIC Gb  
 Class I, Zone 1, AEx e d IIC Gb  
 Class II, Division 1, Groups E, F, G

**NEC/CEC:**

Class II, Zone 21, Ex tb IIIC Db  
 Class II, Zone 21, AEx t IIIC Db  
 Class III, Division 1  
 IP6X

**ATEX/IECEX:**

Zone 1 and 2 – 21 and 22  
 II 2 GD  
 IP66 - IK10

CONTROLS: NEC/CEC, ATEX/IECEX INCREASED SAFETY CONTROL STATIONS

	Weight kg (lb)		Volume dm <sup>3</sup> (in <sup>3</sup> )		Pack	Catalog Number	
	Rail Mounted	Panel Mounted	Rail Mounted	Panel Mounted		Rail Mounted	Panel Mounted
<b>Key Release Mushroom Head Push Button (contact block to be ordered separately)</b>							
<i>For legend plates, guards and blanking plugs see accessories page.</i>							
Red	0.085 (0.183)	0.096 (0.212)	0.09 (5.49)	0.25 (15.26)	1	<b>UC0R</b>	<b>UC0P</b>
<b>1-Pole Contact Blocks</b>							
1 x NO						<b>UCB5R</b>	<b>UCB5P</b>
1 x NC	0.032 (0.071)		0.06 (3.66)		1	<b>UCB9R</b>	<b>UCB9P</b>
<b>Spare Parts</b>							
Spare key (type 4A 185)	—		—			<b>SK4A185</b>	<b>SK4A185</b>
Rail to panel mounted conversion adaptor	0.02 (0.04)		0.08 (4.88)		1	—	<b>UPMA</b>



# Unicode™ 2 Series Key Momentary Push Buttons

## Components for Increased Safety Enclosures

### NEC/CEC:

Class I, Division 2 Groups A, B, C, D  
 Class I, Zone 1, Ex e d IIC Gb  
 Class I, Zone 1, AEx e d IIC Gb  
 Class II, Division 1, Groups E, F, G

### NEC/CEC:

Class II, Zone 21, Ex tb IIIC Db  
 Class II, Zone 21, AEx t IIIC Db  
 Class III, Division 1  
 IP6X

### ATEX/IECEx:

Zone 1 and 2 – 21 and 22  
 Ⓢ II 2 GD  
 IP66 - IK10

CONTROLS: NEC/CEC, ATEX/IECEx INCREASED SAFETY CONTROL STATIONS

### Features

- Can be equipped with up to three Unicode 2 Series Contact Blocks (UCB) contact blocks.
- Globally certified.
- Available in TS35 rail mounted or panel mounted.

### Standard Materials

- Body: thermosetting plastic
- Seal: ethylene propylene diene Monomer (M-class) rubber (EPDM)

### NEC/CEC Certifications and Compliances

- Certification Type AUX
  - Rated Ambient Temperature: -55 °C to +70 °C (-67 °F to +158 °F)
- UL Standards: UL No. 61010-1 (2nd Edition), UL 60079-0 (5th Edition 2009), UL 60079-1 (6th Edition 2009), UL 60079-7 (Ed 4th 2008), UL 60079-31:2009
- UL Certificate: E184198
- CAN/CSA Standards: C22.2 No. 0-10, C22.2 No. 61010-1-04, C22.2 No 213 (2nd Edition), C22.2 No. 60079-0:07, C22.2 No. 60079-1:07, No. 60079-7:03, No. 60079-31:12, E61241-1-1:02, C22.2 No. 60529:05 (R 2010)
- CSA Certificate: 2661552
- Other Standards: ANSI/ISA-12.12.01 (2013), ANSI/ISA-61241-0 (12.10.02)-2006 (R2011), ANSI/ISA-61241-1 (12.10.03)-2006 (R2011), ANSI/IEC 60529-2004

### ATEX Certifications and Compliances

- Certification Type AUX
  - Gas: Zone 1 and 2
    - Conforming to ATEX 94/9/CE: Ⓢ II 2 G
    - Type of Protection: Ex e II
  - Dust: Zone 21 and 22
    - Conforming to ATEX 94/9/CE: Ⓢ II 2 D
    - Type of Protection: Ex tD A21
- Surface Temperature: -20 °C to +70 °C (-4 °F to +158 °F)
- CE Declaration of Conformity: 5C206
- ATEX Certificate: LCIE 00 ATEX 0002U
- Index of Protection according EN/IEC 60529: IP66
- Impact Resistance (shock): 7 Joules

### EURASEC Certification

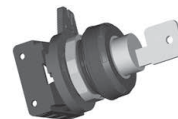
- EURASEC RU C-FR. Г505.В00909

### Other Certification ①

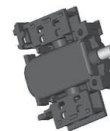
- INMETRO Certificate: BVC 11.0644-U



**UEOR**  
(rail mounted contacts)



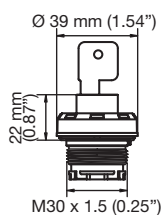
**UEOP**  
(panel mounted contacts)



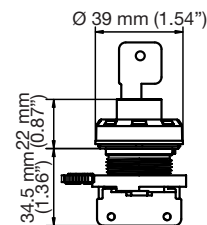
**UCB**  
Contact Block

### Dimensions in Millimeters (Inches)

#### Rail Mounted Contacts



#### Panel Mounted Contacts



① INMETRO certification available on special request only. Contact your local sales representative for more information.

# Unicode™ 2 Series Key Momentary Push Buttons

## Components for Increased Safety Enclosures

**NEC/CEC:**

Class I, Division 2 Groups A, B, C, D  
 Class I, Zone 1, Ex e d IIC Gb  
 Class I, Zone 1, AEx e d IIC Gb  
 Class II, Division 1, Groups E, F, G

**NEC/CEC:**

Class II, Zone 21, Ex tb IIIC Db  
 Class II, Zone 21, AEx t IIIC Db  
 Class III, Division 1  
 IP6X

**ATEX/IECEX:**

Zone 1 and 2 – 21 and 22  
 II 2 GD  
 IP66 - IK10

	Weight kg (lb)		Volume dm <sup>3</sup> (in <sup>3</sup> )		Pack	Catalog Number	
	Rail Mounted	Panel Mounted	Rail Mounted	Panel Mounted		Rail Mounted	Panel Mounted
<b>Key Momentary Push Button (contact block to be ordered separately)</b>							
<i>For legend plates, guards and blanking plugs see accessories page.</i>							
Key removable in both positions	0.080 (0.176)	0.093 (0.205)	0.08 (4.88)	0.20 (12.20)	1	UE0R	UE0P
Key removable in ON positions	0.080 (0.176)	0.093 (0.205)	0.08 (4.88)	0.20 (12.20)	1	UF0R	UF0P
Key removable in OFF positions	0.080 (0.176)	0.093 (0.205)	0.08 (4.88)	0.20 (12.20)	1	UG0R	UG0P
<b>1-Pole Contact Blocks</b>							
1 x NO						UCB5R	UCB5P
1 x NC	0.032 (0.071)		0.06 (3.66)		1	UCB9R	UCB9P
<b>Spare Parts</b>							
Spare key (type 4A 185)		—		—		SK4A185	SK4A185
Rail to panel mounted conversion adaptor	0.02 (0.04)		0.08 (4.88)		1	—	UPMA

CONTROLS: NEC/CEC, ATEX/IECEX INCREASED SAFETY CONTROL STATIONS



# Unicode™ 2 Series Rotary Actuators

## Components for Increased Safety Enclosures

CONTROLS: NEC/CEC, ATEX/IECEX INCREASED SAFETY CONTROL STATIONS

Appleton

**NEC/CEC:**  
 Class I, Division 2, Groups A, B, C, D  
 Class I, Zone 1, AEx de IIC  
 Class I, Zone 1, AEx e IIC

**NEC/CEC:**  
 Class II, Division 2, Groups F, G  
 Class III  
 Type 4X/IP66 ①

**ATEX/IECEX:**  
 Zone 1 and 2 – 21 and 22  
 Ⓢ II 2 GD  
 IP66 – IK10

### Features

- Can be equipped with up to three Unicode 2 Series Contact Blocks (UCB) contact blocks.
- Globally certified.
- Available in TS35 rail mounted or panel mounted.

### Standard Materials

- Body: thermosetting plastic
- Seal: ethylene propylene diene Monomer (M-class) rubber (EPDM)

### NEC/CEC Certifications and Compliances

- Certification Type TCe
  - Operating Temperature: -40 °C to +60 °C (-40 °F to +140 °F)
  - Ingress Protection (solid and liquid): IP66 and Type 4X ①
  - CAN/CSA Standards: C22.2 No. 0-M91, No. 14-05, No. 94-M91, No. 213-M1987, No. 60079-0:07, No. 60079-1:07, No. 60529:05, E60079-7-03, E61241-1-1:02
  - UL Standards: UL 508, UL 50E, UL 60079-0, UL 60079-1, UL 60079-7
  - Other Standards: ANSI/ISA 12.12.01-2011, ANSI/ISA 61241-0 (12.10.02)-2006, ANSI/ISA 61241-1(12.10.03)-2006
  - CSA Certificate: 2358701

### ATEX/IECEX Certifications and Compliances

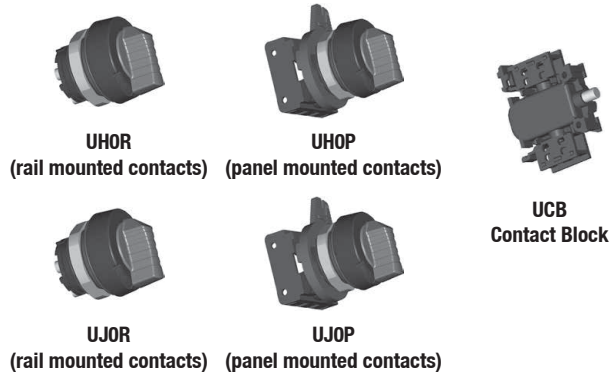
- Certification Type TCe
  - Gas: Zone 1 and 2
    - Conforming to ATEX 94/9/CE: Ⓢ II 2 G
    - Type of Protection: Ex e IIC Gb
  - Dust: Zone 21 and 22
    - Conforming to ATEX 94/9/CE: Ⓢ II 2 D
    - Type of Protection: Ex tb IIIC Db
- Surface Temperature: -40 °C to +60 °C (-40 °F to +140 °F)
- CE Declaration of Conformity: 5C242
- ATEX Certificate: LCIE 09 ATEX 3010U
- IECEx Certificate: IECEx LCI 09.0011U
- Index of Protection according EN/IEC 60529: IP66
- Impact Resistance (shock): IK10

### EURASEC Certification

- EURASEC RU C-FR. Г505.В00909

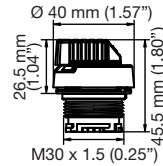
### Other Certification ②

- INMETRO Certificate: BVC 11.0644-U

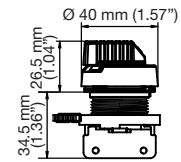


### Dimensions in Millimeters (Inches)

#### Rail Mounted Contacts



#### Panel Mounted Contacts



① Overall hazardous location and ingress protection rating depends on the rating of the optional certified components used.  
 ② INMETRO certification available on special request only. Contact your local sales representative for more information.

# Unicode™ 2 Series Rotary Actuators

## Components for Increased Safety Enclosures

**NEC/CEC:**  
 Class I, Division 2, Groups A, B, C, D  
 Class I, Zone 1, AEx de IIC  
 Class I, Zone 1, AEx e IIC

**NEC/CEC:**  
 Class II, Division 2, Groups F, G  
 Class III  
 Type 4X/IP66 ①

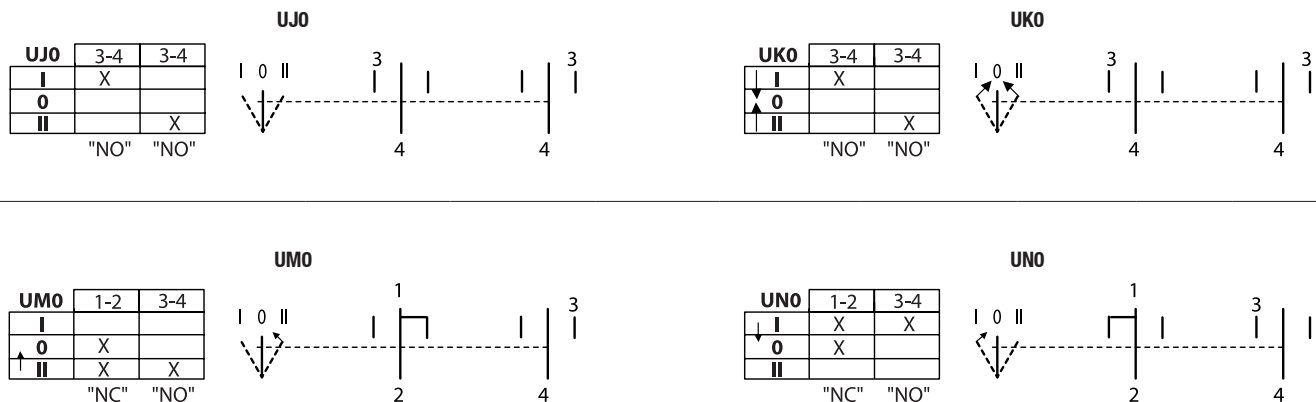
**ATEX/IECEX:**  
 Zone 1 and 2 – 21 and 22  
 II 2 GD  
 IP66 – IK10

CONTROLS: NEC/CEC, ATEX/IECEX INCREASED SAFETY CONTROL STATIONS

Appleton®

	Weight kg (lb)		Volume dm <sup>3</sup> (in <sup>3</sup> )		Pack	Catalog Number	
	Rail Mounted	Panel Mounted	Rail Mounted	Panel Mounted		Rail Mounted	Panel Mounted
<b>2-Position Rotary Actuator (contact block to be ordered separately)</b>							
<i>For legend plates, guards and blanking plugs see accessories page.</i>							
2-Positions Selector Switch (O-I), 2 maintained positions	0.038 (0.084)	0.051 (0.112)	0.09 (5.49)	0.22 (13.43)	1	UH0R	UH0P
<b>3-Position Rotary Actuator (contact block to be ordered separately)</b>							
<i>Legend plates, guards, blanking plugs (see Accessories page).</i>							
3-Position Selector Switch, I and II position maintained (I-O-II)	0.038 (0.084)	0.051 (0.112)	0.09 (5.49)	0.22 (13.43)	1	UJ0R	UJ0P
3-Position Selector Switch, I and II spring return to O (I->O<-II)	0.038 (0.084)	0.051 (0.112)	0.09 (5.49)	0.22 (13.43)	1	UK0R	UK0P
3-Position Selector Switch, I maintained, II spring return to O (I-O<-II)	0.038 (0.084)	0.051 (0.112)	0.09 (5.49)	0.22 (13.43)	1	UM0R	UM0P
3-Position Selector Switch, I spring return to O, II maintained (I->O-II)	0.038 (0.084)	0.051 (0.112)	0.09 (5.49)	0.22 (13.43)	1	UN0R	UN0P
<b>1-Pole Contact Blocks</b>							
1 x NO	0.032 (0.071)		0.06 (3.66)		1	UCB5R	UCB5P
1 x NC						UCB9R	UCB9P
<b>Spare Parts</b>							
Rail to panel mounted conversion adaptor	0.02 (0.04)		0.08 (4.88)		1	—	UPMA

### Wiring Diagrams



① Overall hazardous location and ingress protection rating depends on the rating of the optional certified components used.

# Unicode™ 2 Series Illuminated Push Buttons

## Components for Increased Safety Enclosures

### NEC/CEC:

Class I, Division 2, Groups A, B, C, D  
Class I, Zone 1, AEx de IIC  
Class I, Zone 1, AEx e IIC

### NEC/CEC:

Class II, Division 2, Groups F, G  
Class III  
Type 4X/IP66 ①

### ATEX/IECEX:

Zone 1 and 2 – 21 and 22  
Ⓢ II 2 GD  
IP66 – IK10

### Features

- Can be equipped with up to two Unicode 2 Series Contact Blocks (UCB) contact blocks.
- Globally certified.
- Available in TS35 rail mounted or panel mounted.
- Long lifetime, high intensity single LED light.
- Rated operating voltage (Ue): 12 Vac to 254 Vac, 50/60 Hz and 12 Vdc to 60 Vdc.
- Terminal connection: 2.5 mm<sup>2</sup> (0.004 in<sup>2</sup>)
- Operational life: 100,000 hours.

### Standard Materials

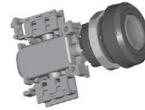
- Body: polyamide
- Lens: polycarbonate
- Seal: ethylene propylene diene Monomer (M-class) rubber (EPDM)

### NEC/CEC Certifications and Compliances

- Certification Type TCe
  - Operating Temperature: -40 °C to +60 °C (-40 °F to +140 °F)
  - Ingress Protection (solid and liquid): IP66 and Type 4X ①
  - CAN/CSA Standards: C22.2 No. 0-M91, No. 14-05, No. 94-M91, No. 213-M1987, No. 60079-0:07, No. 60079-1:07, No. 60529:05, E60079-7-03, E61241-1-1:02
  - UL Standards: UL 508, UL 50E, UL 60079-0, UL 60079-1, UL 60079-7
  - Other Standards: ANSI/ISA 12.12.01-2011, ANSI/ISA 61241-0 (12.10.02)-2006, ANSI/ISA 61241-1(12.10.03)-2006
  - CSA Certificate: 2358701

### ATEX/IECEX Certifications and Compliances

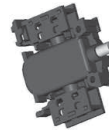
- Certification Type TCe (Actuator and Lens)
  - Gas: Zone 1 and 2
    - Conforming to ATEX 94/9/CE: Ⓢ II 2 G
    - Type of Protection: Ex e IIC Gb
  - Dust: Zone 21 and 22
    - Conforming to ATEX 94/9/CE: Ⓢ II 2 D
    - Type of Protection: Ex tb IIIC Db
  - Surface Temperature: -40 °C to +60 °C (-40 °F to +140 °F)
  - CE Declaration of Conformity: 5C242
  - ATEX Certificate: LCIE 09 ATEX 3010U
  - IECEx Certificate: IECEx LCI 09.0011U
  - Index of Protection according EN/IEC 60529: IP66
  - Impact Resistance (shock): IK10
- Certification Type CVe (Contact Block and Pilot Light)
  - Gas: Zone 1 and 2
    - Conforming to ATEX 94/9/CE: Ⓢ II 2 G
    - Type of Protection: Ex e IIC
  - Dust: Zone 21 and 22
    - Conforming to ATEX 94/9/CE: Ⓢ II 2 D
    - Type of Protection: Ex tD A21
  - Surface Temperature: -40 °C to +75 °C (-40 °F to +167 °F)
  - CE Declaration of Conformity: 5C243
  - ATEX Certificate: LCIE 09 ATEX 3001U
  - IECEx Certificate: IECEx LCI 09.0002U



**ULG0H**  
(rail mounted contacts)



**ULG0P**  
(panel mounted contacts)



**UCB**  
Contact Block



**UIL08**

### EURASEC Certification

- Certification Type TCe (Actuator and Lens)
  - EURASEC RU C-FR. Г505.В00909
- Certification Type CVe (Contact Block and Pilot Light)
  - EURASEC RU C-FR. Г505.В00909

### Other Certification ②

- Certification Type TCe (Actuator and Lens)
  - INMETRO Certificate: BVC 10.0044-U
- Certification Type CVe (Contact Block and Pilot Light)
  - INMETRO Certificate: BVC 10.0047-U

① Overall hazardous location and ingress protection rating depends on the rating of the optional certified components used.

② INMETRO certification available on special request only. Contact your local sales representative for more information.

# Unicode™ 2 Series Illuminated Push Buttons

## Components for Increased Safety Enclosures

### NEC/CEC:

Class I, Division 2, Groups A, B, B, C, D  
Class I, Zone 1, AEx de IIC  
Class I, Zone 1, AEx e IIC

### NEC/CEC:

Class II, Division 2, Groups F, G  
Class III  
Type 4X/IP66 ①

### ATEX/IECEX:

Zone 1 and 2 – 21 and 22  
Ex II 2 GD  
IP66 – IK10

CONTROLS: NEC/CEC, ATEX/IECEX INCREASED SAFETY CONTROL STATIONS

Appleton®

	Weight kg (lb)		Volume dm <sup>3</sup> (in <sup>3</sup> )		Pack	Catalog Number	
	Rail Mounted	Panel Mounted	Rail Mounted	Panel Mounted		Rail Mounted	Panel Mounted
<b>Spring Return Illuminated Push Button (contact block to be ordered separately)</b> For legend plates, guards and blanking plugs see accessories page.							
Green	0.062 (0.137)	0.075 (0.165)	0.26 (15.87)	0.28 (17.09)	1	ULG0R	ULG0P
Red	0.062 (0.137)	0.075 (0.165)	0.26 (15.87)	0.28 (17.09)	1	ULR0R	ULR0P
White	0.062 (0.137)	0.075 (0.165)	0.26 (15.87)	0.28 (17.09)	1	ULW0R	ULW0P
Blue	0.062 (0.137)	0.075 (0.165)	0.26 (15.87)	0.28 (17.09)	1	ULB0R	ULB0P
Yellow	0.062 (0.137)	0.075 (0.165)	0.26 (15.87)	0.28 (17.09)	1	ULY0R	ULY0P

### 1-Pole Contact Blocks

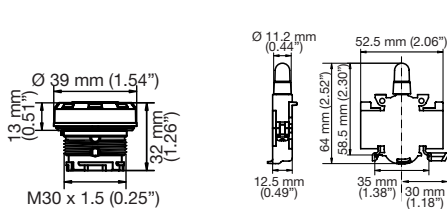
1 x NO	0.032 (0.071)	0.06 (3.66)	1	UCB5R	UCB5P
1 x NC				UCB9R	UCB9P

### Spare Parts

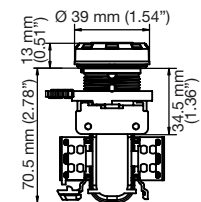
Rail to panel mounted conversion adaptor	0.02 (0.04)	0.08 (4.88)	1	—	UPMA
--	-------------	-------------	---	---	------

Marking	Color	Weight kg (lb)	Volume dm <sup>3</sup> (in <sup>3</sup> )	Pack	Catalog Number
<b>Set of Five Spare Inserts</b>					
(unmarked)	Green	0.01 (0.02)	0.01 (0.61)	1	UIAG
(unmarked)	Red	0.01 (0.02)	0.01 (0.61)	1	UIAR
(unmarked)	Yellow	0.01 (0.02)	0.01 (0.61)	1	UIAY
(unmarked)	White	0.01 (0.02)	0.01 (0.61)	1	UIAW
(unmarked)	Blue	0.01 (0.02)	0.01 (0.61)	1	UIAB
(unmarked)	Black	0.01 (0.02)	0.01 (0.61)	1	UIAN
ON	Green	0.01 (0.02)	0.01 (0.61)	1	UIA01
OFF	Red	0.01 (0.02)	0.01 (0.61)	1	UIA02
START	Green	0.01 (0.02)	0.01 (0.61)	1	UIA03
STOP	Red	0.01 (0.02)	0.01 (0.61)	1	UIA04
MARCHE	Green	0.01 (0.02)	0.01 (0.61)	1	UIA05
ARRET	Red	0.01 (0.02)	0.01 (0.61)	1	UIA06
I	Green	0.01 (0.02)	0.01 (0.61)	1	UIA07
O	Red	0.01 (0.02)	0.01 (0.61)	1	UIA08

### Dimensions in Millimeters (Inches)

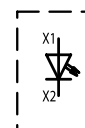


Rail Mounted Contacts



Panel Mounted Contacts

### Wiring Diagram



① Overall hazardous location and ingress protection rating depends on the rating of the optional certified components used.

# Unicode™ 2 Series Pilot Lights

## Components for Increased Safety Enclosures

**NEC/CEC:**  
 Class I, Division 2, Groups A, B, C, D  
 Class I, Zone 1, AEx de IIC  
 Class I, Zone 1, AEx e IIC

**NEC/CEC:**  
 Class II, Division 2, Groups F, G  
 Class III  
 Type 4X/IP66 ①

**ATEX/IECEX:**  
 Zone 1 and 2 – 21 and 22  
 II 2 GD  
 IP66 – IK10

CONTROLS: NEC/CEC, ATEX/IECEX INCREASED SAFETY CONTROL STATIONS

Appleton

### Features

- Globally certified.
- Available in TS35 rail mounted or panel mounted.
- Long lifetime, high intensity single LED light.
- Rated operating voltage (Ue): 12 Vac to 254 Vac, 50/60 Hz and 12 Vdc to 60 Vdc.
- Terminal connection: 2.5 mm<sup>2</sup> (0.004 in<sup>2</sup>)
- Operational life: 100,000 hours.

### Standard Materials

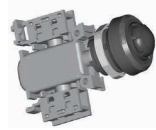
- Body: polyamide
- Lens: polycarbonate
- Seal: ethylene propylene diene Monomer (M-class) rubber (EPDM)

### NEC/CEC Certifications and Compliances

- Actuator and Lens: Certification Type TCe
  - Operating Temperature: -40 °C to +60 °C (-40 °F to +140 °F)
  - Ingress Protection (solid and liquid): IP66 and Type 4X ①
  - CAN/CSA Standards: C22.2 No. 0-M91, No. 14-05, No. 94-M91, No. 213-M1987, No. 60079-0:07, No. 60079-1:07, No. 60529:05, E60079-7-03, E61241-1-1:02
  - UL Standards: UL 508, UL 50E, UL 60079-0, UL 60079-1, UL 60079-7
  - Other Standards: ANSI/ISA 12.12.01-2011, ANSI/ISA 61241-0 (12.10.02)-2006, ANSI/ISA 61241-1(12.10.03)-2006
  - CSA Certificate: 2358701

### ATEX/IECEX Certifications and Compliances

- Certification Type TCe (Actuator and Lens)
  - Gas: Zone 1 and 2
    - Conforming to ATEX 94/9/CE: II 2 G
    - Type of Protection: Ex e IIC Gb
  - Dust: Zone 21 and 22
    - Conforming to ATEX 94/9/CE: II 2 D
    - Type of Protection: Ex tb IIIC Db
  - Surface Temperature: -40 °C to +60 °C (-40 °F to +140 °F)
  - CE Declaration of Conformity: 5C242
  - ATEX Certificate: LCIE 09 ATEX 3010U
  - IECEx Certificate: IECEx LCI 09.0011U
  - Index of Protection according EN/IEC 60529: IP66
  - Impact Resistance (shock): IK10
- Certification Type CVe (Contact Block and Pilot Light)
  - Gas: Zone 1 and 2
    - Conforming to ATEX 94/9/CE: II 2 G
    - Type of Protection: Ex e IIC
  - Dust: Zone 21 and 22
    - Conforming to ATEX 94/9/CE: II 2 D
    - Type of Protection: Ex tD A21
  - Surface Temperature: -40 °C to +75 °C (-40 °F to +167 °F)
  - CE Declaration of Conformity: 5C243
  - ATEX Certificate: LCIE 09 ATEX 3001U
  - IECEx Certificate: IECEx LCI 09.0002U



**UPGOR**  
(rail mounted contacts)



**UPGOP**  
(panel mounted contacts)

### EURASEC Certification

- Certification Type TCe (Actuator and Lens)
  - EURASEC RU C-FR. Г505.В00909
- Certification Type CVe (Contact Block and Pilot Light)
  - EURASEC RU C-FR. Г505.В00909

### Other Certification ②

- Certification Type TCe (Actuator and Lens)
  - INMETRO Certificate: BVC 10.0044-U
- Certification Type CVe (Contact Block and Pilot Light)
  - INMETRO Certificate: BVC 10.0047-U

① Overall hazardous location and ingress protection rating depends on the rating of the optional certified components used.

② INMETRO certification available on special request only. Contact your local sales representative for more information.

# Unicode™ 2 Series Pilot Lights

## Components for Increased Safety Enclosures

**NEC/CEC:**  
 Class I, Division 2, Groups A, B, C, D  
 Class I, Zone 1, AEx de IIC  
 Class I, Zone 1, AEx e IIC

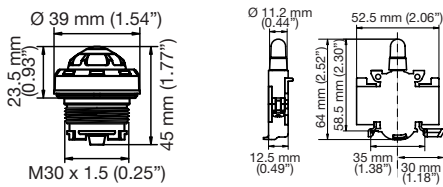
**NEC/CEC:**  
 Class II, Division 2, Groups F, G  
 Class III  
 Type 4X/IP66 ①

**ATEX/IECEX:**  
 Zone 1 and 2 – 21 and 22  
 Ex II 2 GD  
 IP66 – IK10

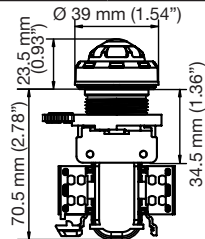
CONTROLS: NEC/CEC, ATEX/IECEX INCREASED SAFETY CONTROL STATIONS

	Weight kg (lb)		Volume dm <sup>3</sup> (in <sup>3</sup> )		Pack	Catalog Number	
	Rail Mounted	Panel Mounted	Rail Mounted	Panel Mounted		Rail Mounted	Panel Mounted
<b>Pilot Light: 12 Vac to 254, Vac 50/60 Hz, 12 Vdc to 60 Vdc.</b> For legend plates, guards and blanking plugs see accessories page.							
Green	0.056 (0.123)	0.069 (0.152)	0.29 (17.70)	0.31 (18.92)	1	UPG0R	UPG0P
Red	0.056 (0.123)	0.069 (0.152)	0.29 (17.70)	0.31 (18.92)	1	UPR0R	UPR0P
White	0.056 (0.123)	0.069 (0.152)	0.29 (17.70)	0.31 (18.92)	1	UPW0R	UPW0P
Blue	0.056 (0.123)	0.069 (0.152)	0.29 (17.70)	0.31 (18.92)	1	UPB0R	UPB0P
Yellow	0.056 (0.123)	0.069 (0.152)	0.29 (17.70)	0.31 (18.92)	1	UPY0R	UPY0P
<b>Spare Parts</b>							
Rail to panel mounted conversion adaptor	0.02 (0.04)		0.08 (4.88)		1		UPMA
<b>Spare Lenses</b>							
Green	0.03 (0.06)		0.06 (3.66)		1	UPGL	UPGL
Red	0.03 (0.06)		0.06 (3.66)		1	UPRL	UPRL
White	0.03 (0.06)		0.06 (3.66)		1	UPWL	UPWL
Blue	0.03 (0.06)		0.06 (3.66)		1	UPBL	UPBL
Yellow	0.03 (0.06)		0.06 (3.66)		1	UPYL	UPYL

### Dimensions in Millimeters (Inches)

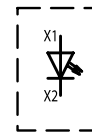


Rail Mounted Contacts



Panel Mounted Contacts

### Wiring Diagram



① Overall hazardous location and ingress protection rating depends on the rating of the optional certified components used.

# Unicode™ 2 Series 1-Pole Contact Block

## Components for Increased Safety Enclosures

**NEC/CEC:**  
 Class I, Division 2, Groups A, B, C, D  
 Class I, Zone 1, AEx de IIC  
 Class I, Zone 1, AEx e IIC

**NEC/CEC:**  
 Class II, Division 2, Groups F, G  
 Class III  
 Type 4X/IP66 ①

**ATEX/IECEX:**  
 Zone 1 and 2 – 21 and 22  
 Ⓢ II 2 GD  
 IP66 – IK10

CONTROLS: NEC/CEC, ATEX/IECEX INCREASED SAFETY CONTROL STATIONS

Appleton®

### Features

- Globally certified.
- Available in TS35 rail mounted or panel mounted.
- High performance contact block suitable for low intensity (less than 5mA).
- Rated operating voltage (Ue): 500 Vac — 110 Vdc.
- Switching capacity:
  - AC12: 16 Amp/400 Vac
  - AC14: 10 Amp/400 Vac
  - AC15: 6 Amp/500 Vac
  - DC13: 2 Amp/24 Vdc and 1 Amp/110 Vdc
- Terminal connection: 2.5 mm<sup>2</sup> (0.004 in<sup>2</sup>)
- Operational life: 100,000 hours.

### Standard Materials

- Body: polyamide
- Contact: silver alloy

### NEC/CEC Certifications and Compliances

- Certification Type Cve
  - Operating Temperature: -40 °C to +75 °C (-40 °F to +167 °F)
  - Ingress Protection (solid and liquid): IP66 and Type 4X ①
  - CAN/CSA Standards: C22.2 No. 0-M91, No. 14-05, No. 94-M91, No. 213-M1987, No. 60079-0:07, No. 60079-1:07, No. 60529:05, E60079-7-03, E61241-1-1:02
  - UL Standards: UL 508, UL 50E, UL 60079-0, UL 60079-1, UL 60079-7
  - Other Standards: ANSI/ISA 12.12.01-2011, ANSI/ISA 61241-0 (12.10.02)-2006, ANSI/ISA 61241-1(12.10.03)-2006
  - CSA Certificate: 2358701

### ATEX/IECEX Certifications and Compliances

- Certification Type Cve
  - Gas: Zone 1 and 2
    - Conforming to ATEX 94/9/CE: Ⓢ II 2 G
    - Type of Protection: Ex e IIC
  - Dust: Zone 21 and 22
    - Conforming to ATEX 94/9/CE: Ⓢ II 2 D
    - Type of Protection: Ex tD A21
- Surface Temperature: -40 °C to +75 °C (-40 °F to +167 °F)
- CE Declaration of Conformity: 5C243
- ATEX Certificate: LCIE 09 ATEX 3001U
- IECEX Certificate: IECEX LCI 09.0002U

### EURASEC Certification

- EURASEC RU C-FR.Г505.В00909

### Other Certification ②

- INMETRO Certificate: BVC 10.0047-U



**UCB5R**  
 Rail Mounted Contacts  
 Top Access



**UCB5P**  
 Panel Mounted Contacts  
 Bottom Access

① Overall hazardous location and ingress protection rating depends on the rating of the optional certified components used.  
 ② INMETRO certification available on special request only. Contact your local sales representative for more information.

# Unicode™ 2 Series 1-Pole Contact Block

## Components for Increased Safety Enclosures

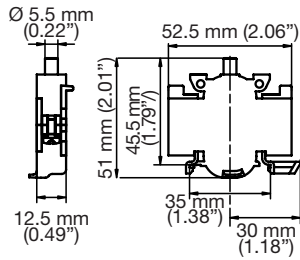
**NEC/CEC:**  
 Class I, Division 2, Groups A, B, C, D  
 Class I, Zone 1, AEx de IIC  
 Class I, Zone 1, AEx e IIC

**NEC/CEC:**  
 Class II, Division 2, Groups F, G  
 Class III  
 Type 4X/IP66 ①

**ATEX/IECEX:**  
 Zone 1 and 2 – 21 and 22  
 Class II 2 GD  
 IP66 – IK10

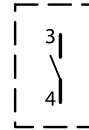
	Weight kg (lb)		Volume dm <sup>3</sup> (in <sup>3</sup> )		Pack	Catalog Number	
	Rail Mounted	Panel Mounted	Rail Mounted	Panel Mounted		Rail Mounted	Panel Mounted
<b>1-Pole Contact Blocks</b>							
1 x NO						UCB5R	UCB5P
1 x NC	0.032 (0.071)		0.06 (3.66)		1	UCB9R	UCB9P

### Dimensions in Millimeters (Inches)

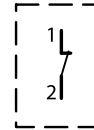


### Wiring Diagram

NO



NC



① Overall hazardous location and ingress protection rating depends on the rating of the optional certified components used.

# Unicode™ 2 Series 16 Amp Switches

## Components for Increased Safety Enclosures

**NEC:**  
Class I, Division 2, Groups A, B, C, D  
Class I, Zone 1, AEx de IIC

**CEC:**  
Class I, Division 2, Groups A, B, C, D  
Ex de IIC

**ATEX/IECEx:**  
Zone 1 and 2 – 21 and 22  
Ex II 2 GD

CONTROLS: NEC/CEC, ATEX/IECEx INCREASED SAFETY CONTROL STATIONS

Appleton®

### Features

- 2, 3, 4, 6 or 8-pole switches:
  - Available in TS35 rail mounted or panel mounted.
  - Padlockable
  - Can be equipped with switch and changeover switch contact blocks
- Switching capacity:
  - AC 1, 16 Amp, 690 Vac
  - AC 3, 8 Amp, 500 Vac
  - AC 3, 4 Amp, 690 Vac
  - AC 15, 16 Amp, 415 Vac
  - DC 1, 10 Amp, 24 Vdc
  - DC 1, 6 Amp, 60 Vdc
  - DC 1: 6 Amp/110 Vdc (2 contacts wired in series)
  - DC 1: 6 Amp/220 Vdc (3 contacts in series)
- Terminal connection: 1.5 mm<sup>2</sup> - 2.5 mm<sup>2</sup> (0.002 in<sup>2</sup> - 0.004 in<sup>2</sup>) (stranded), 1.5 mm<sup>2</sup> - 4 mm<sup>2</sup> (0.002 in<sup>2</sup> - 0.006 in<sup>2</sup>) (solid)
- Operational life: 10,000 cycles.

### Standard Materials

- Body: polyamide
- Contact: silver

### NEC/CEC Certifications and Compliances

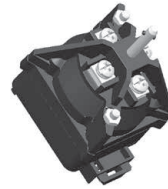
- Switches: Certification Type SW16
  - Ambient Temperature: -55 °C to +80 °C (-67 °F to +176 °F)
  - CAN/CSA Standards: C22.2 No. 0-12, No. 14-10, No. 213-M1987, No. 60079-0, No. 60079-1, No. E60079-7,
  - UL Standards: UL 508, UL 60079-0, UL 60079-1, UL 60079-7
  - Other Standards: ANSI/ISA 12.12.01
  - CSA Certificate: 2644203

### ATEX/IECEx Certifications and Compliances ①

- Certification Type SW16 (Switches)
  - Gas: Zone 1 and 2
    - Conforming to ATEX 94/9/CE: Ex II 2 G
    - Type of Protection: Ex db eb IIC
  - Dust: Zone 21 and 22
    - Must be used in an approved dustproof enclosure
  - Operating Temperature: -55 °C to +80 °C (-67 °F to +176 °F)
  - CE Declaration of Conformity: 5C249
  - ATEX Certificate: LCIE 12 ATEX 3068U
  - IECEx Certificate: IECEx LCIE 12.0021U
- Certification Type AUXe (Handles) ②
  - Gas: Zone 1 and 2
    - Conforming to ATEX 94/9/CE: Ex II 2 G
    - Type of Protection: Ex e II
  - Dust: Zone 21 and 22
    - Conforming to ATEX 94/9/CE: Ex II 2 D
    - Type of Protection: Ex tD A21
  - Ambient Temperature: -20 °C to +55 °C (-4 °F to +131 °F)
  - CE Declaration of Conformity: 5C221
  - ATEX Certificate: LCIE 03 ATEX 0012U
- Index of Protection according EN/IEC 60529: IP66
- Impact Resistance (shock): IK10

### EURASEC Certification

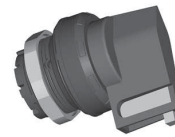
- Certification Type SW16 (Switches)
  - EURASEC RU C-FR.Г505.В00909



**US30R**  
(rail mounted switch)



**US30P**  
(panel mounted switch)



**USH ②**  
(switch handle)

① These products are certified only when used as components in factory assembled panels.

② USH handle is ATEX certified it is not for use in IECEx explosive atmospheres.

# Unicode™ 2 Series 16 Amp Switches Standard Configurations

## Components for Increased Safety Enclosures

**NEC:**  
Class I, Division 2, Groups A, B, C, D  
Class I, Zone 1, AEx de IIC

**CEC:**  
Class I, Division 2, Groups A, B, C, D  
Ex de IIC

**ATEX/IECEX:**  
Zone 1 and 2 – 21 and 22  
II 2 GD

CONTROLS: NEC/CEC, ATEX/IECEX INCREASED SAFETY CONTROL STATIONS



	Diagram Number	Wiring Diagram	Catalog Number	
			Rail Mounted	Panel Mounted
<b>Two Pole Selector Switches (handle to be ordered separately)</b>				
2 position 2-pole selector switch	002		US1622-0002R	US1622-0002P
2 position 2-pole selector switch	016		US1622-0016R	US1622-0016P
3 position 2-pole selector switch	027		US1623-0027R	US1623-0027P
3 position 2-pole selector switch with spring return from 135° to 90°	038		US1623-0038R	US1623-0038P
3 position 2-pole selector switch with spring return from 45° to 90°	048		US1623-0048R	US1623-0048P
<b>Three or Four Pole Selector Switches (handle to be ordered separately)</b>				
2 position 4-pole selector switch	102		US1642-0102R	US1642-0102P
3 position 4-pole selector switch	119		US1643-0119R	US1643-0119P
2 position 4-pole selector switch	106		US1642-0106R	US1642-0106P
3 position 3-pole — Late break, early make selector switch with spring return from 45° to 90°	138		US1633-0138R	US1633-0138P
3 position 3-pole — Late break, early make selector switch with spring return from 135° to 90°	197		US1633-0197R	US1633-0197P
Padlockable lever handle for all selector switches			USH ①	

① USH handle is ATEX certified. it is not for use in IECEX explosive atmospheres.

# Unicode™ 2 Series 16 Amp Switches

## Components for Increased Safety Enclosures

**NEC:**  
Class I, Division 2, Groups A, B, C, D  
Class I, Zone 1, AEx de IIC

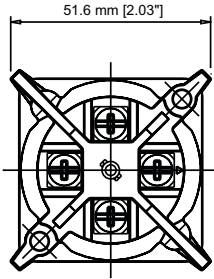
**CEC:**  
Class I, Division 2, Groups A, B, C, D  
Ex de IIC

**ATEX/IECEx:**  
Zone 1 and 2 – 21 and 22  
II 2 GD

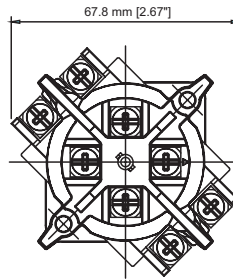
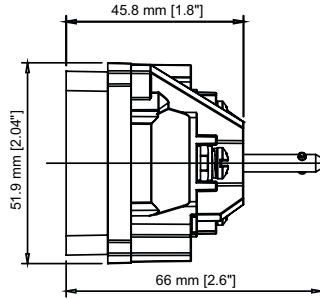
CONTROLS: NEC/CEC, ATEX/IECEx INCREASED SAFETY CONTROL STATIONS

### Dimensions in Millimeters (Inches)

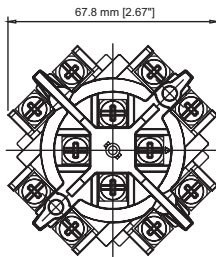
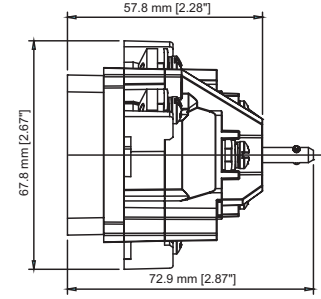
#### 16 Amp Switches



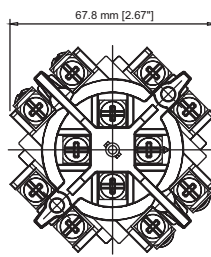
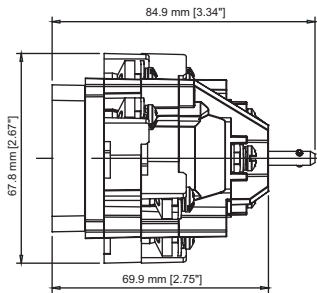
**2-pole**



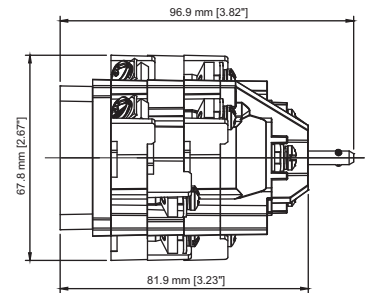
**3- and 4-pole**



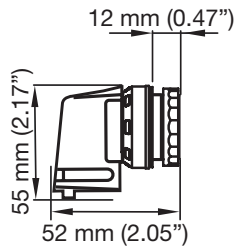
**6-pole**



**8-pole**



#### USH Handle ①



① USH handle is ATEX certified. it is not for use in IECEx explosive atmospheres.

# Unicode™ 2 Series 16 Amp Switches Custom Configurations

## Components for Increased Safety Enclosures

**NEC:**  
Class I, Division 2, Groups A, B, C, D  
Class I, Zone 1, AEx de IIC

**CEC:**  
Class I, Division 2, Groups A, B, C, D  
Ex de IIC

**ATEX/IECEX:**  
Zone 1 and 2 – 21 and 22  
Ex II 2 GD

CONTROLS - NEC/CEC, ATEX/IECEX INCREASED SAFETY CONTROL STATIONS



Wiring Diagram	Catalog Number		Wiring Diagram	Catalog Number	
	Rail Mounted	Panel Mounted		Rail Mounted	Panel Mounted
<b>1-pole 2 position</b>					
	US1612-0056R	US1612-0056P		US1612-0061R	US1612-0061P
<b>2-pole 2 position</b>					
	US1622-0003R	US1622-0003P		US1622-0015R	US1622-0015P
	US1622-0004R	US1622-0004P		US1622-0017R	US1622-0017P
	US1622-0005R	US1622-0005P		US1622-0018R	US1622-0018P
	US1622-0007R	US1622-0007P		US1622-0019R	US1622-0019P
	US1622-0008R	US1622-0008P		US1622-0020R	US1622-0020P
	US1622-0009R	US1622-0009P		US1622-0021R	US1622-0021P
	US1622-0010R	US1622-0010P		US1622-0043R	US1622-0043P
	US1622-0011R	US1622-0011P		US1622-0045R	US1622-0045P
	US1622-0012R	US1622-0012P		US1622-0053R	US1622-0053P
	US1622-0013R	US1622-0013P		US1622-0073R	US1622-0073P
	US1622-0014R	US1622-0014P		US1622-0074R	US1622-0074P
<b>2-pole 3 position</b>					
	US1623-0022R	US1623-0022P		US1623-0025R	US1623-0025P
	US1623-0023R	US1623-0023P		US1623-0026R	US1623-0026P
	US1623-0024R	US1623-0024P		US1623-0028R	US1623-0028P

# Unicode™ 2 Series 16 Amp Switches Custom Configurations

## Components for Increased Safety Enclosures

**NEC:**  
Class I, Division 2, Groups A, B, C, D  
Class I, Zone 1, AEx de IIC

**CEC:**  
Class I, Division 2, Groups A, B, C, D  
Ex de IIC

**ATEX/IECEx:**  
Zone 1 and 2 – 21 and 22  
II 2 GD

CONTROLS: NEC/CEC, ATEX/IECEx INCREASED SAFETY CONTROL STATIONS



Wiring Diagram	Catalog Number		Wiring Diagram	Catalog Number	
	Rail Mounted	Panel Mounted		Rail Mounted	Panel Mounted
<b>2-pole 3 position</b>					
	US1623-0029R	US1623-0029P		US1623-0052R	US1623-0052P
	US1623-0030R	US1623-0030P		US1623-0054R	US1623-0054P
	US1623-0031R	US1623-0031P		US1623-0055R	US1623-0055P
	US1623-0032R	US1623-0032P		US1623-0059R	US1623-0059P
	US1623-0039R	US1623-0039P		US1623-0068R	US1623-0068P
	US1623-0040R	US1623-0040P		US1623-0070R	US1623-0070P
	US1623-0041R	US1623-0041P		US1623-0071R	US1623-0071P
	US1623-0042R	US1623-0042P		US1623-0072R	US1623-0072P
	US1623-0046R	US1623-0046P		US1623-0075R	US1623-0075P
	US1623-0047R	US1623-0047P		US1623-0076R	US1623-0076P
	US1623-0049R	US1623-0049P		US1623-0087R	US1623-0087P
	US1623-0050R	US1623-0050P		US1623-9002R	US1623-9002P
	US1623-0051R	US1623-0051P			

# Unicode™ 2 Series 16 Amp Switches Custom Configurations

## Components for Increased Safety Enclosures

**NEC:**  
Class I, Division 2, Groups A, B, C, D  
Class I, Zone 1, AEx de IIC

**CEC:**  
Class I, Division 2, Groups A, B, C, D  
Ex de IIC

**ATEX/IECEX:**  
Zone 1 and 2 – 21 and 22  
II 2 GD

Wiring Diagram	Catalog Number		Wiring Diagram	Catalog Number	
	Rail Mounted	Panel Mounted		Rail Mounted	Panel Mounted
<b>2-pole 4 position</b>					
	US1624-0044R	US1624-0044P		US1624-0062R	US1624-0062P
	US1624-0057R	US1624-0057P		US1624-0065R	US1624-0065P
	US1624-0058R	US1624-0058P		US1624-0084R	US1624-0084P
<b>2-pole 8 position</b>					
	US1628-0036R	US1628-0036P	—	—	—
<b>3-pole 2 position</b>					
	US1632-0122R	US1632-0122P		US1632-1153R	US1632-1153P
<b>3-pole 3 position</b>					
	US1633-0136R	US1633-0136P		US1633-1120R	US1633-1120P
	US1633-0144R	US1633-0144P		US1633-1142R	US1633-1142P
	US1633-0145R	US1633-0145P		US1633-1155R	US1633-1155P
	US1633-0161R	US1633-0161P		US1633-1171R	US1633-1171P
	US1633-0167R	US1633-0167P		US1633-1202R	US1633-1202P
	US1633-0199R	US1633-0199P		US1633-1209R	US1633-1209P
	US1633-1109R	US1633-1109P		US1633-1210R	US1633-1210P
	US1633-1112R	US1633-1112P			

CONTROLS: NEC/CEC, ATEX/IECEX INCREASED SAFETY CONTROL STATIONS



# Unicode™ 2 Series 16 Amp Switches Custom Configurations

## Components for Increased Safety Enclosures

**NEC:**  
Class I, Division 2, Groups A, B, C, D  
Class I, Zone 1, AEx de IIC

**CEC:**  
Class I, Division 2, Groups A, B, C, D  
Ex de IIC

**ATEX/IECEx:**  
Zone 1 and 2 – 21 and 22  
II 2 GD

CONTROLS: NEC/CEC, ATEX/IECEx INCREASED SAFETY CONTROL STATIONS



Wiring Diagram	Catalog Number		Wiring Diagram	Catalog Number	
	Rail Mounted	Panel Mounted		Rail Mounted	Panel Mounted
<b>3-pole 3 position</b>					
	US1633-1230R	US1633-1230P	—	—	—
<b>3-pole 4 position</b>					
	US1634-0146R	US1634-0146P		US1634-0183R	US1634-0183P
	US1634-0168R	US1634-0168P		US1634-1119R	US1634-1119P
	US1634-0178R	US1634-0178P		US1634-1145R	US1634-1145P
	US1634-0181R	US1634-0181P		US1634-1151R	US1634-1151P
<b>4-pole 2 position</b>					
	US1642-0103R	US1642-0103P		US1642-0152R	US1642-0152P
	US1642-0104R	US1642-0104P		US1642-0154R	US1642-0154P
	US1642-0105R	US1642-0105P		US1642-0173R	US1642-0173P
	US1642-0107R	US1642-0107P		US1642-1105R	US1642-1105P
	US1642-0116R	US1642-0116P		US1642-1122R	US1642-1122P
	US1642-0134R	US1642-0134P		US1642-1147R	US1642-1147P
	US1642-0135R	US1642-0135P		US1642-1162R	US1642-1162P
	US1642-0137R	US1642-0137P		US1642-1234R	US1642-1234P
<b>4-pole 3 position</b>					
	US1643-0111R	US1643-0111P		US1643-0113R	US1643-0113P
	US1643-0112R	US1643-0112P		US1643-0114R	US1643-0114P

# Unicode™ 2 Series 16 Amp Switches Custom Configurations

## Components for Increased Safety Enclosures

**NEC:**  
Class I, Division 2, Groups A, B, C, D  
Class I, Zone 1, AEx de IIC

**CEC:**  
Class I, Division 2, Groups A, B, C, D  
Ex de IIC

**ATEX/IECEx:**  
Zone 1 and 2 – 21 and 22  
Ex II 2 GD

Wiring Diagram	Catalog Number		Wiring Diagram	Catalog Number	
	Rail Mounted	Panel Mounted		Rail Mounted	Panel Mounted
	<b>US1643-0118R</b>	<b>US1643-0118P</b>		<b>US1643-0170R</b>	<b>US1643-0170P</b>
	<b>US1643-0120R</b>	<b>US1643-0120P</b>		<b>US1643-0175R</b>	<b>US1643-0175P</b>
	<b>US1643-0121R</b>	<b>US1643-0121P</b>		<b>US1643-0176R</b>	<b>US1643-0176P</b>
	<b>US1643-0127R</b>	<b>US1643-0127P</b>		<b>US1643-0180R</b>	<b>US1643-0180P</b>
	<b>US1643-0129R</b>	<b>US1643-0129P</b>		<b>US1643-1103R</b>	<b>US1643-1103P</b>
	<b>US1643-0131R</b>	<b>US1643-0131P</b>		<b>US1643-1104R</b>	<b>US1643-1104P</b>
	<b>US1643-0132R</b>	<b>US1643-0132P</b>		<b>US1643-1106R</b>	<b>US1643-1106P</b>
	<b>US1643-0133R</b>	<b>US1643-0133P</b>		<b>US1643-1108R</b>	<b>US1643-1108P</b>
	<b>US1643-0139R</b>	<b>US1643-0139P</b>		<b>US1643-1111R</b>	<b>US1643-1111P</b>
	<b>US1643-0140R</b>	<b>US1643-0140P</b>		<b>US1643-1113R</b>	<b>US1643-1113P</b>
	<b>US1643-0153R</b>	<b>US1643-0153P</b>		<b>US1643-1116R</b>	<b>US1643-1116P</b>
	<b>US1643-0157R</b>	<b>US1643-0157P</b>		<b>US1643-1125R</b>	<b>US1643-1125P</b>
	<b>US1643-0158R</b>	<b>US1643-0158P</b>		<b>US1643-1129R</b>	<b>US1643-1129P</b>
	<b>US1643-0159R</b>	<b>US1643-0159P</b>		<b>US1643-1134R</b>	<b>US1643-1134P</b>
	<b>US1643-0160R</b>	<b>US1643-0160P</b>		<b>US1643-1138R</b>	<b>US1643-1138P</b>
	<b>US1643-0162R</b>	<b>US1643-0162P</b>		<b>US1643-1159R</b>	<b>US1643-1159P</b>
	<b>US1643-0169R</b>	<b>US1643-0169P</b>			

CONTROLS: NEC/CEC, ATEX/IECEx INCREASED SAFETY CONTROL STATIONS



# Unicode™ 2 Series 16 Amp Switches Custom Configurations

## Components for Increased Safety Enclosures

**NEC:**  
Class I, Division 2, Groups A, B, C, D  
Class I, Zone 1, AEx de IIC

**CEC:**  
Class I, Division 2, Groups A, B, C, D  
Ex de IIC

**ATEX/IECEx:**  
Zone 1 and 2 – 21 and 22  
II 2 GD

CONTROLS: NEC/CEC, ATEX/IECEx INCREASED SAFETY CONTROL STATIONS



Wiring Diagram	Catalog Number		Wiring Diagram	Catalog Number	
	Rail Mounted	Panel Mounted		Rail Mounted	Panel Mounted
<b>4-pole 3 position</b>					
	US1643-1165R	US1643-1165P		US1643-1206R	US1643-1206P
	US1643-1166R	US1643-1166P		US1643-1208R	US1643-1208P
	US1643-1167R	US1643-1167P		US1643-1213R	US1643-1213P
	US1643-1172R	US1643-1172P		US1643-1215R	US1643-1215P
	US1643-1173R	US1643-1173P		US1643-1217R	US1643-1217P
	US1643-1174R	US1643-1174P		US1643-1220R	US1643-1220P
	US1643-1176R	US1643-1176P		US1643-1222R	US1643-1222P
	US1643-1178R	US1643-1178P		US1643-1225R	US1643-1225P
	US1643-1179R	US1643-1179P		US1643-1226R	US1643-1226P
	US1643-1201R	US1643-1201P		US1643-1232R	US1643-1232P
	US1643-1203R	US1643-1203P		US1643-9001R	US1643-9001P
<b>4-pole 4 position</b>					
	US1644-0110R	US1644-0110P		US1644-0147R	US1644-0147P
	US1644-0123R	US1644-0123P		US1644-0148R	US1644-0148P
	US1644-0130R	US1644-0130P		US1644-0150R	US1644-0150P
	US1644-0143R	US1644-0143P		US1644-0151R	US1644-0151P

# Unicode™ 2 Series 16 Amp Switches Custom Configurations

## Components for Increased Safety Enclosures

**NEC:**  
Class I, Division 2, Groups A, B, C, D  
Class I, Zone 1, AEx de IIC

**CEC:**  
Class I, Division 2, Groups A, B, C, D  
Ex de IIC

**ATEX/IECEX:**  
Zone 1 and 2 – 21 and 22  
Ex II 2 GD

Wiring Diagram	Catalog Number		Wiring Diagram	Catalog Number	
	Rail Mounted	Panel Mounted		Rail Mounted	Panel Mounted
<b>4-pole 4 position</b>					
	US1644-0155R	US1644-0155P		US1644-1128R	US1644-1128P
	US1644-0156R	US1644-0156P		US1644-1132R	US1644-1132P
	US1644-0164R	US1644-0164P		US1644-1133R	US1644-1133P
	US1644-0171R	US1644-0171P		US1644-1136R	US1644-1136P
	US1644-0198R	US1644-0198P		US1644-1139R	US1644-1139P
	US1644-0608R	US1644-0608P		US1644-1143R	US1644-1143P
	US1644-0611R	US1644-0611P		US1644-1144R	US1644-1144P
	US1644-0614R	US1644-0614P		US1644-1146R	US1644-1146P
	US1644-1102R	US1644-1102P		US1644-1154R	US1644-1154P
	US1644-1114R	US1644-1114P		US1644-1156R	US1644-1156P
	US1644-1115R	US1644-1115P		US1644-1163R	US1644-1163P
	US1644-1124R	US1644-1124P		US1644-1164R	US1644-1164P
	US1644-1127R	US1644-1127P		US1644-1168R	US1644-1168P

CONTROLS - NEC/CEC, ATEX/IECEX INCREASED SAFETY CONTROL STATIONS



# Unicode™ 2 Series 16 Amp Switches Custom Configurations

## Components for Increased Safety Enclosures

**NEC:**  
Class I, Division 2, Groups A, B, C, D  
Class I, Zone 1, AEx de IIC

**CEC:**  
Class I, Division 2, Groups A, B, C, D  
Ex de IIC

**ATEX/IECEX:**  
Zone 1 and 2 – 21 and 22  
II 2 GD

CONTROLS: NEC/CEC, ATEX/IECEX INCREASED SAFETY CONTROL STATIONS

Wiring Diagram	Catalog Number		Wiring Diagram	Catalog Number	
	Rail Mounted	Panel Mounted		Rail Mounted	Panel Mounted
<b>4-pole 4 position</b>					
	<b>US1644-1169R</b>	<b>US1644-1169P</b>		<b>US1644-1211R</b>	<b>US1644-1211P</b>
	<b>US1644-1180R</b>	<b>US1644-1180P</b>		<b>US1644-1212R</b>	<b>US1644-1212P</b>
	<b>US1644-1204R</b>	<b>US1644-1204P</b>		<b>US1644-1219R</b>	<b>US1644-1219P</b>
	<b>US1644-1205R</b>	<b>US1644-1205P</b>		<b>US1644-1224R</b>	<b>US1644-1224P</b>
	<b>US1644-1207R</b>	<b>US1644-1207P</b>		<b>US1644-1229R</b>	<b>US1644-1229P</b>
<b>4-pole 5 position</b>					
	<b>US1645-1110R</b>	<b>US1645-1110P</b>		<b>US1645-1235R</b>	<b>US1645-1235P</b>



# Unicode™ 2 Series Accessories

## Components for Increased Safety Enclosures

**NEC:**  
Class I, Division 2, Groups A, B, C, D  
Class I, Zone 1, AEx de IIC

**CEC:**  
Class I, Division 2, Groups A, B, C, D  
Ex de IIC

**ATEX/IECEX:**  
Zone 1 and 2 – 21 and 22  
Ex II 2 GD

### Nameplates — Set of 10

Blank self-adhesive, laminated plastic 58 mm x 18 mm (2.28" x 0.71").

Color	Catalog Number
White (black letters)	UNPW
Yellow (black letters)	UNPY
Red (white letters)	UNPR
Blue (white letters)	UNPB
Black (white letters)	UNPN
Green (white letters)	UNPG

### Inserts for Push Button — Set of 5

Marking	Color	Catalog Number
(unmarked)	Green	UIAG
(unmarked)	Red	UIAR
(unmarked)	Yellow	UIAY
(unmarked)	White	UIAW
(unmarked)	Blue	UIAB
(unmarked)	Black	UIAN
ON	Green	UIA01
OFF	Red	UIA02
START	Green	UIA03
STOP	Red	UIA04
MARCHE	Green	UIA05
ARRET	Red	UIA06
I	Green	UIA07
O	Red	UIA08

### Inserts for Illuminated Push Button — Set of 5

Marking	Color	Catalog Number
(unmarked)	Green	UILG
(unmarked)	Red	UILR
(unmarked)	Yellow	UILY
(unmarked)	White	UILW
(unmarked)	Blue	UILB
ON	Green	UILO1
OFF	Red	UILO2
START	Green	UILO3
STOP	Red	UILO4
MARCHE	Green	UILO5
ARRET	Red	UILO6
I	Green	UILO7
O	Red	UILO8

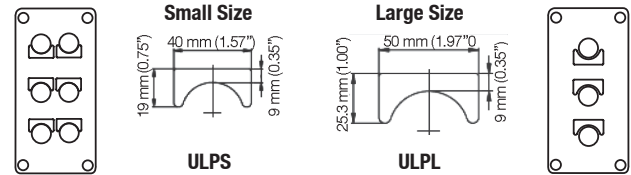
### Spare Key

For all key-operated buttons.

Description	Catalog Number
Spare key type 4 A 185	SK4A185

### Standard Legend Plates

Two sizes available. Self-adhesive yellow laminated plastic (black lettering).



Text	Catalog Number	
	Small	Large
Blank (set of 10)	ULPS	ULPL
ON	ULPSA01	ULPLA01
OFF	ULPSA02	ULPLA02
FORWARD	ULPSA03	ULPLA03
REVERSE	ULPSA04	ULPLA04
JOG	ULPSA05	ULPLA05
RUN	ULPSA06	ULPLA06
START	ULPSA07	ULPLA07
STOP	ULPSA08	ULPLA08
UP	ULPSA09	ULPLA09
DOWN	ULPSA10	ULPLA10
FAST	ULPSA11	ULPLA11
SLOW	ULPSA12	ULPLA12
RAISE	ULPSA13	ULPLA13
LOWER	ULPSA14	ULPLA14
OPEN	ULPSA15	ULPLA15
CLOSE	ULPSA16	ULPLA16
LOW	ULPSA17	ULPLA17
HIGH	ULPSA18	ULPLA18
TEST	ULPSA19	ULPLA19
RESET	ULPSA20	ULPLA20
EMERGENCY STOP	ULPSA21	ULPLA21
MARCHE	ULPSA22	ULPLA22
ARRET	ULPSA23	ULPLA23
ARRET D'URGENCE	ULPSA24	ULPLA24
HAUT	ULPSA25	ULPLA25
BAS	ULPSA26	ULPLA26
O—I	ULPSH01	ULPLH01
ON—OFF	ULPSH02	ULPLH02
START—STOP	ULPSH03	ULPLH03
STOP—START	ULPSH04	ULPLH04
HAND—AUTO	ULPSH05	ULPLH05
MANU—AUTO	ULPSH06	ULPLH06
FORWARD—REVERSE	ULPSH07	ULPLH07
REMOTE—LOCAL	ULPSH08	ULPLH08
MARCHE—ARRET	ULPSH09	ULPLH09
I—O—II	ULPSJ01	ULPLJ01
OFF—O—ON	ULPSJ02	ULPLJ02
START—NORMAL—STOP	ULPSJ03	ULPLJ03
HAND—OFF—AUTO	ULPSJ04	ULPLJ04
MANU—O—AUTO	ULPSJ05	ULPLJ05
FORWARD—OFF—REVERSE	ULPSJ06	ULPLJ06
LOCAL—REMOTE—AUTO	ULPSJ07	ULPLJ07
LOCAL—O—REMOTE	ULPSJ08	ULPLJ08
MARCHE—NORMAL—ARRET	ULPSJ09	ULPLJ09

CONTROLS: NEC/CEC, ATEX/IECEX INCREASED SAFETY CONTROL STATIONS

Appleton

# Unicode™ 2 Series Accessories


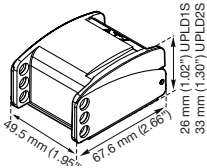




## Components for Increased Safety Enclosures

**NEC:**  
Class I, Division 2, Groups A, B, C, D  
Class I, Zone 1, AEx de IIC

**CEC:**  
Class I, Division 2, Groups A, B, C, D  
Ex de IIC

**ATEX/IECEx:**  
Zone 1 and 2 – 21 and 22  
Ex II 2 GD

CONTROLS: NEC/CEC, ATEX/IECEx INCREASED SAFETY CONTROL STATIONS

	Description	Catalog Number
	<b>Yellow Guard</b> Mushroom head protection for emergency stop	098657
	<b>Padlockable Guard</b> Stainless steel and plastic cover, capacity: 3 padlocks, 6 mm (0.24") maximum diameter (not supplied) For push button and rotary actuator	 UPLD1S
	For mushroom head actuator	 UPLD2S
	<b>Cover Blanking Plug</b> For cover drilling – 30.5 mm (1.2") diameter	UBP
	<b>Device Adaptor</b> Rail to panel mounted conversion adaptor	UPMA