

JBR Series 30 and 60 Amp Switched Receptacles

Dead Front Interlocked Construction; 600 Volts AC, 50-400 Hertz; Pressure Wire Terminals

Class I, Division 1 and 2, Groups B, C, D
Class II, Division 1 and 2, Groups F, G
Class III
NEMA 3[•], 3R[•], 4[†], 4X[†], 7BCD, 9FG

Applications

- Locations where receptacles are used with stationary or portable electrically operated devices such as:
 - Lighting systems
 - Conveyors
 - Heaters
 - Motor-generator sets
 - Air conditioners
 - Compressors
 - Pumps

Features

- Plug must be inserted into receptacle before the switch is in the on position.
- JBR is UL Listed for use with ACP Powertite® and CPH plugs.
- Receptacle supplied with flip cover and screw cover.
- Positive polarization: only plugs of the same style, number of poles and amperage rating may be used with these receptacles.
- Terminal block provided in mounting box for ease of wiring. Factory wired between the receptacle and terminal block.
- Style 2 (shell and extra pole) grounding.
- Receptacles may be locked in the OFF position.
- Mounting box provided 1-1/2" vertical feed-thru conduit openings. Reducer bushings provided for 1-1/4" conduit opening. All conduit openings have NPT threads.
- O-ring gasket provided between the mounting box and receptacle cover.
- Internal switch provides safe and quick disconnect means. No need for separate disconnect switch.
- UL Classified for use with competitors like plugs †.

Standard Materials

- Receptacle housing and mounting box: copperfree (4/10 of 1% max.) aluminum
- Captive cover bolts, mounting feet and hinges: stainless steel

Standard Finishes

- Receptacle and mounting box: epoxy powder coat

Options

- For field installed drain and breather set, order one **ECD50B4X** drain and one **BRTB4X** breather. Both are NEMA 4X rated for Group B.
- Special Polarization: Prevents plug insertion in a receptacle or connector wired for a different voltage. In installations where there are different line voltages, the special polarization option is desirable. This allows only plugs and receptacles wired for the same line voltage to be mated together. The receptacle or connector interior is positioned 22-1/2°, relative to the polarization rivet, to the right (as specified) of standard, and plug is polarized to correspond. Suffix **-P4** to receptacle or plug.

Certifications and Compliances

- UL Standard: UL 1010 (UL 1203), UL 894, UL 1682, UL 1686
- UL Listed: E10784

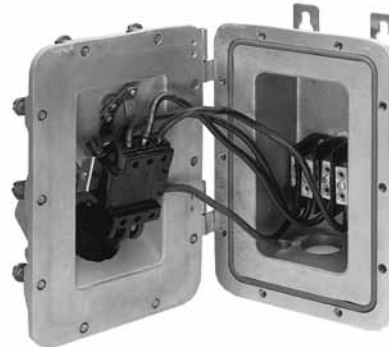
• Flip cover suitable for NEMA 3, 3R only.

▼ NEMA 4 rating maintained with Appleton NEMA 4 plug installed. Select screw cover for 4, 4X. Both covers are included with product.

† UL Classified for use with Crouse-Hinds APJ series plug. Crouse-Hinds is a registered trademark of Cooper Crouse-Hinds.



Illustrated Features



- **Terminal block** provided for line connections.
- **Terminal** provided for grounding connection.
- **Receptacle** is prewired to the terminal block.
- **Disconnect switch** mounted on the cover assembly.

JBR Series 30 and 60 Amp Series Switched Receptacles

Dead Front Interlocked Construction

30 and 60 Amp, 600 Vac, 50-400 Hz

Class I, Division 1 and 2, Groups B, C, D

Class II, Division 1 and 2, Groups F, G

Class III

NEMA 3*, 3R*, 4*, 4X*, 7BCD, 9FG

Amp	Hub Size (Inches) ‡	Wire/Poles	Terminal Block Wire Range	Receptacle Catalog Number	Mating Plug Powerlite®	Complete Plug
30	1-1/2	2W, 3P	#10 - #4	JBR3023-150	ACP3023BC	CPH3023B
	1-1/2	3W, 4P	CU-AL	JBR3034-150	ACP3034BC	CPH3034B
60	1-1/2	2W, 3P	#4 - #6	JBR6023-150	ACP6023BC	CPH6023BC
	1-1/2	3W, 4P	CU-AL	JBR6034-150	ACP6034BC	CPH6034BC



Accessories and Replacement Parts

Description	Catalog Number
Type 4X Drain (field installed)	ECD50B4X
Type 4X Breather (field installed)	BRTB4X
30 Amp Plug Clamping Ring (standard with 30 Amp models)	30CRING
30 Amp Screw Cover (for receptacle)	30SCAP

Maximum Horsepower Ratings of Switch

Phase Motor	Amp	Motor Horsepower		
		240 Vac	480 Vac	600 Vac
1-Phase, 2W, 3P	30	7.5	15	20
	60	10	15	20
3-Phase, 3W, 4P	30	7.5	15	20
	60	10	25	30

• Flip cover suitable for NEMA 3, 3R only.

▼ NEMA 4 rating maintained with Appleton NEMA 4 plug installed. Select screw cover for 4, 4X. Both covers are included with product.


‡ Supplied with (2) 1-1/2" to 1-1/4" reducing bushings.

Plugs for JBR Receptacles


Data and Dimensions

Class I, Division 1 and 2, Groups B, C, D
 Class II, Division 1 and 2, Groups F, G
 Class III
 NEMA 3*, 3R*, 4*, 4X*, 7BCD, 9FG

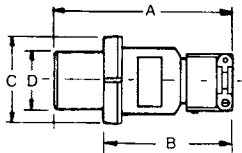
ACP Plugs for JBR Receptacles

Cable Dia. (Inches)	30 Amp		60 Amp	
	2W, 3P	3W, 4P	2W, 3P	3W, 4P
 .390 to 1.375	ACP3023BC	ACP3034BC	ACP6023BC	ACP6034BC

CPH Plugs for JBR Receptacles

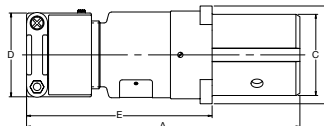
Cable Dia. (Inches)	30 Amp		60 Amp	
	2W, 3P	3W, 4P	2W, 3P	3W, 4P
 .390 to 1.375	CPH3023BC	CPH3034BC	CPH6023BC	CPH6034BC

Dimensions of ACP Plugs



Max. Amp	No. Poles	Dimensions in Inches/Millimeters			
		A	B	C	D
30	2,3,4	6.00/152.4	4.75/120.6	3.13/79.5	1.86/47.2
60	2,3	7.81/198.3	4.94/125.4	3.50/88.9	2.23/56.6
60	4	7.81/198.3	4.94/125.4	3.81/96.7	2.55/64.7

Dimensions of CPH Plugs



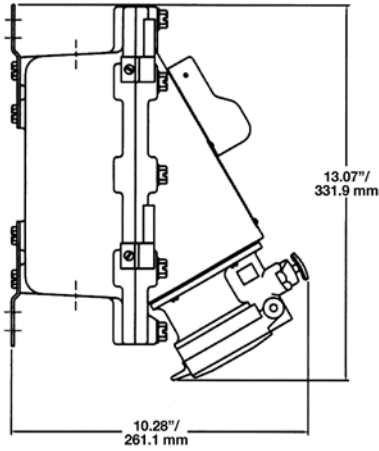
Max. Amp	Wire/Pole	Dimensions in Inches/Millimeters				
		A	B	C	D	E
30	2W, 3P; 3W, 4P	6.13/155.7	2.38/60.4	1.86/47.2	2.63/6.68	4.44/112.7
60	2W, 3P	8.44/214.3	3.06/77.7	3.06/77.7	2.63/6.68	5.69/144.5
60	3W, 4P	8.44/214.3	3.06/77.7	2.55/64.7	2.63/6.68	5.69/144.5

• Flip cover suitable for NEMA 3, 3R only.

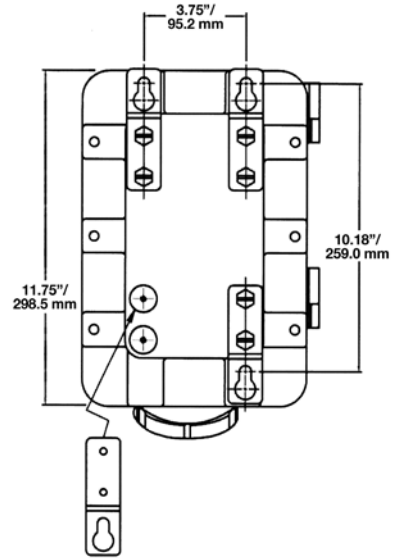
▼ NEMA 4 rating maintained with Appleton NEMA 4 plug installed. Select screw cover for 4, 4X. Both covers are included with product.

JBR Series Switched Receptacle Dimensions

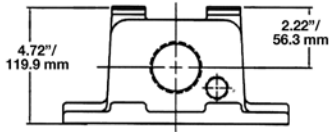
Shown with Flip Cover



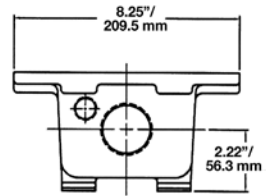
Drilling Plans for Mounting Bolts



Top View



Bottom View



Plugs and Receptacles

PLUGS AND RECEPTACLES: HAZARDOUS LOCATION