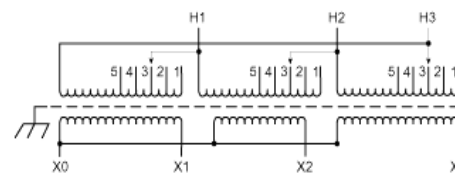
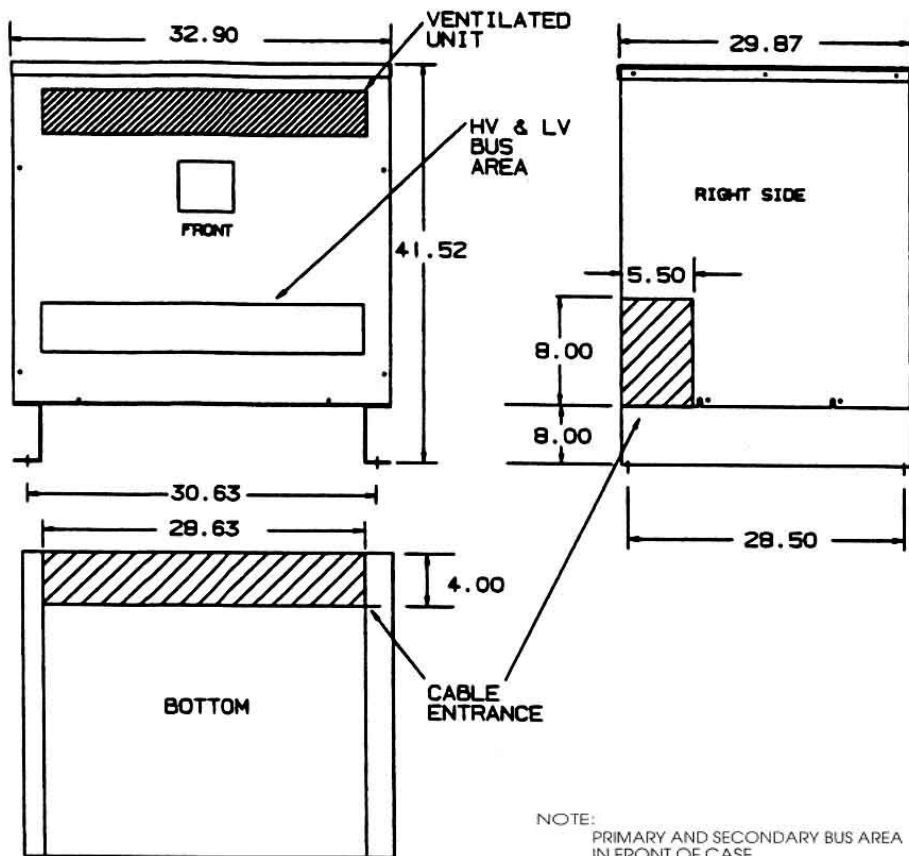


Revisions



Primary Volts	%	Connect Leads to Tap No.
483	105	1
472	102.5	2
460	100	3
449	97.5	4
437	95	5
Secondary Volts		
460		X1, X2, X3
266		X1 & X0
1 phase		X2 & X0
		X3 & X0



Type No.

KVA	CATALOG NUMBER	VOLTAGE		WEATHER SHIELD	WEIGHT	PHASE	FREQ.
		HIGH	LOW				
175	DTGB-0175-4S	460Δ	460Y/266	WS-A-4	1110 Lbs	3φ	60 Hz

TYPICAL PERFORMANCE DATA

Winding Rise	150°C	Regulation @ 100% PF	2.89%	Impedance	4.10%	Typical Efficiency	98.21%
Insulation	220°C	Standards:	UL/CSA			No Load Losses	661 W
Sound Level	55 dB					Full Load Losses	5,638 W