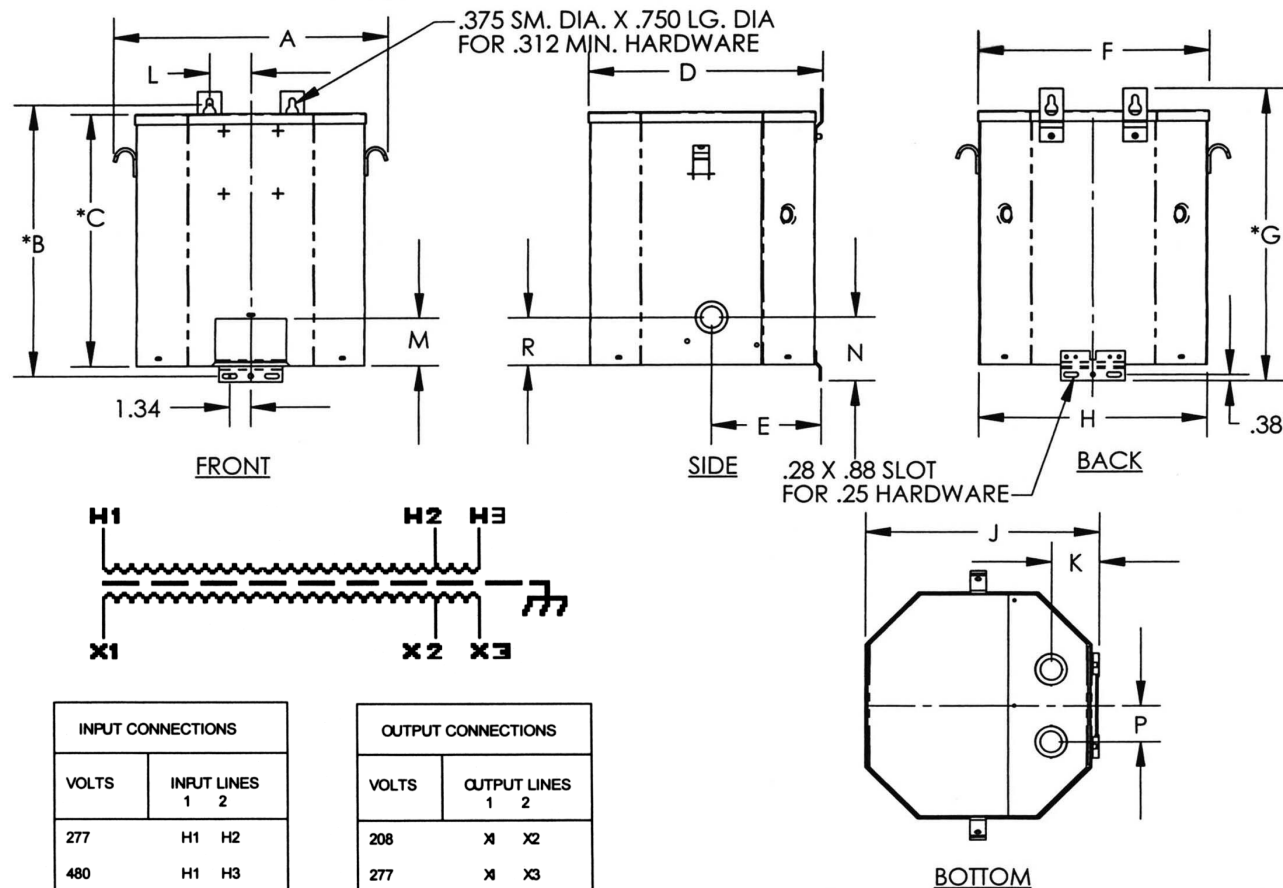


Revisions



Type No.

KVA	CATALOG NUMBER	VOLTAGE		WIRING DIAGRAM	WEIGHT	PHASE	FREQ.
		HIGH	LOW				
10	GP12-10000-S	277 / 480	208 / 277		125 Lbs	1	60 Hz

TYPICAL PERFORMANCE DATA

Winding Rise	115°C	Regulation @ 100% PF	1.8%	IMPEDANCE	2.12%	Typical Efficiency	97.54%
Insulation	180°C					Full Load Losses	252 W
Sound Level	45 dB					No Load Losses	70.4 W

A	B	C	D	E	F	G	H	J	K	L	M	N	P	R
14.12	15.93	14.56	11.59	4.54	11.75	16.94	11.62	11.38	2.68	2.44	3.00	3.13	2.00	3.00

						A	PRINTS TO	CONTROL
								7

GP12-10000-S