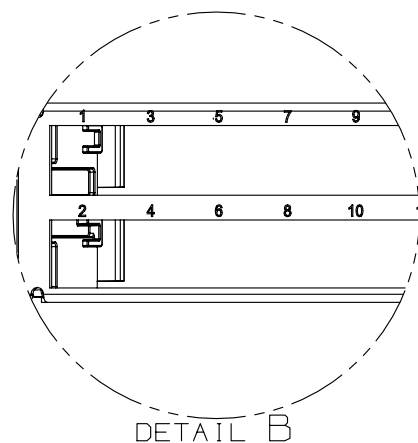
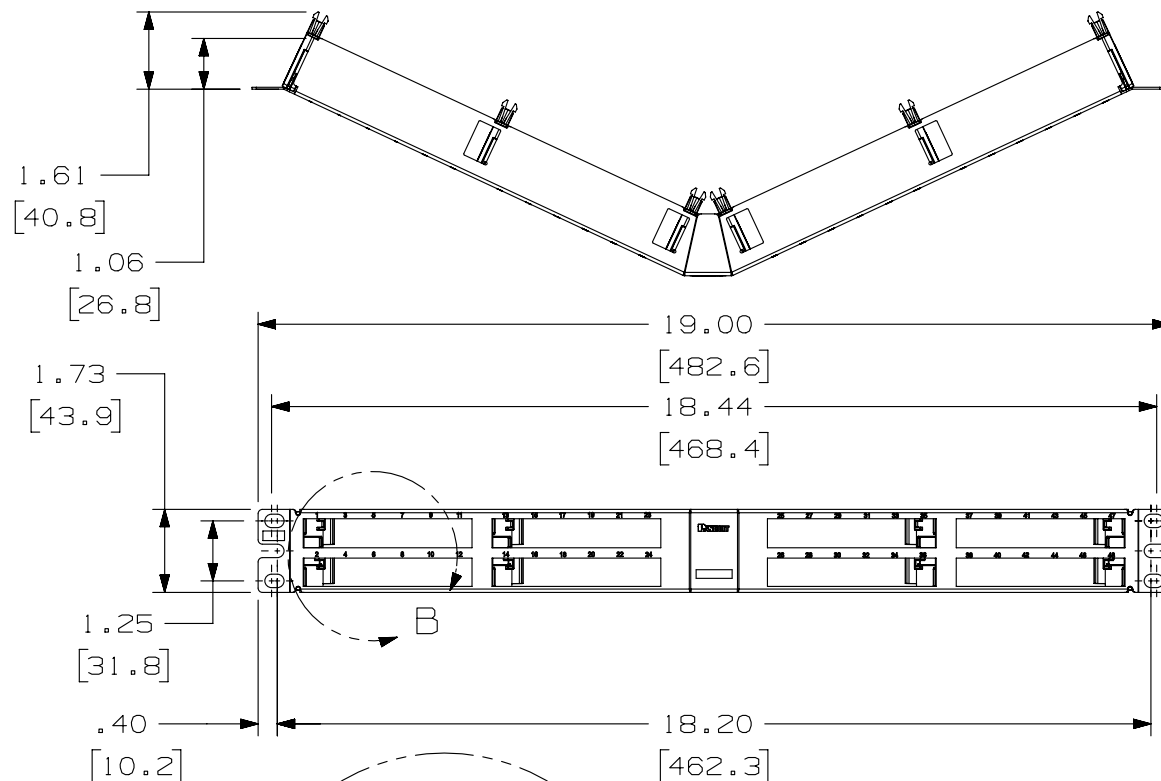


2

1

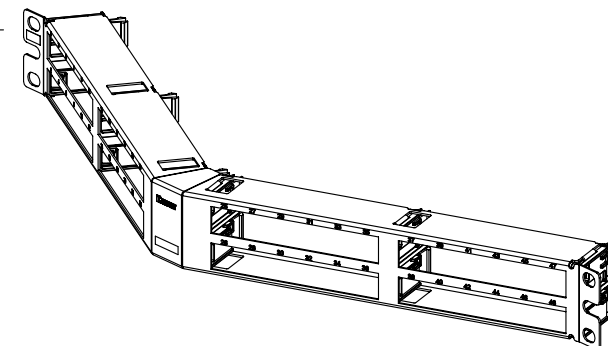
THIS COPY IS PROVIDED ON A RESTRICTED BASIS AND IS NOT TO BE USED IN ANY WAY DETRIMENTAL TO THE INTERESTS OF PANDUIT CORP.


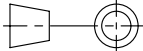


PANDUIT PART NO.	WEIGHT (APPOX.)
QAPP48HDVNSBL	0.65 lb (294.8 g)

#### NOTES:

- SEE CURRENT CATALOG FOR VARIOUS APPLICATIONS.
- THE PATCH PANEL HAS A VERTICAL NUMBERING SEQUENCE AND IS DESIGNED FOR MOUNTING TO 19" UNIVERSAL RACKS.
- DIMENSIONS IN BRACKETS ARE IN METRIC.
- PACKAGE CONTENTS:
  - 1- METAL STAMPING WITH SLIDE GUIDES
  - 1- SCREW KIT (INCLUDES FOUR #12-24 SCREWS)
  - 1- SCREW KIT (INCLUDES FOUR M6 SCREWS)



PART NUMBER		QAPP48HDVNSBL	
TITLE			
QUICKNET 48 PORT ANGLED PATCH PANEL WITH VERTICAL NUMBERING SEQUENCE			
CUSTOMER DRAWING			
ITEM REVISION NAME		M02582DJ/00	
DATASET FILE NAME		M02582DJ_DC64/00B	
UNLESS OTHERWISE SPECIFIED, DIMENSIONAL TOLERANCES ARE: IN [ mm ]		MATERIAL:	
.X ± .XX ± .03 [ .8 ]		PANEL: C.R.S. GUIDES: ABS	
.XXX ± .010 [ .3 ] ANGLES ± 		DRAWING NUMBER: 02582-64	
THIRD ANGLE PROJECTION			
DRAWN BY	DATE	CHK	SCALE
MDJr	9-01-06	WFM	NONE
SHT 1 OF 1		SIZE A	

2

1