

2

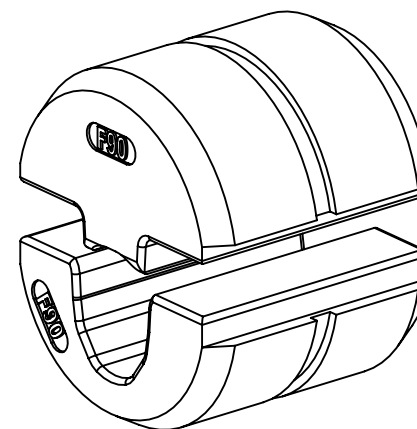
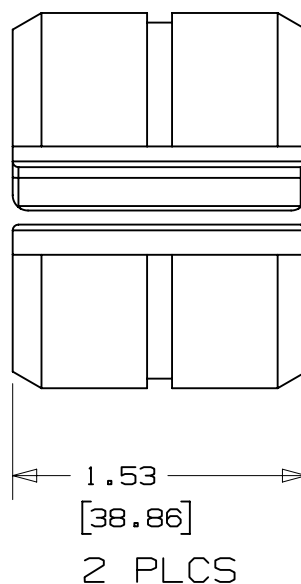
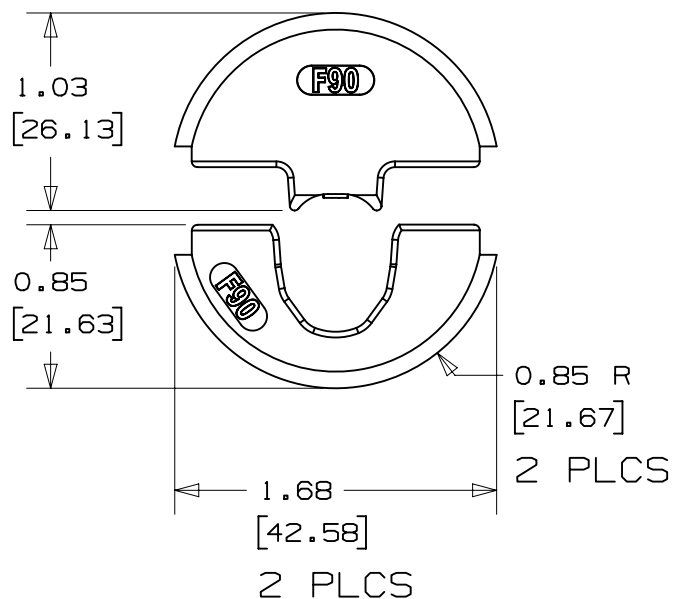
1

THIS COPY IS PROVIDED ON A RESTRICTED BASIS AND IS NOT TO BE USED IN ANY WAY DETRIMENTAL TO THE INTERESTS OF PANDUIT CORP.


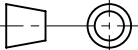
NOTES, UNLESS OTHERWISE SPECIFIED:

PART MUST BE RoHS COMPLIANT.

1. DIMENSIONS IN BRACKETS ARE IN METRIC.
2. RECOMMENDED TOOL: CT-3001/ST
3. COMPATIBLE TOOLS: CT-2931/ST, CT-920CH, CT-930LPCH
4. WIRE SIZE: 3/0
5. CRIMPS: F90 FERRULES - ALL SIZES
6. DIE HALVES ARE HEAT TREATED TO Rc 32-35
7. DIE HALVES ARE NICKLON PLATED FOR LUBRICITY/DURABILITY



00	03-30-17	BJPU	JEH	JADE	RELEASED	012679
REV	DATE	BY	CHK	APR	DESCRIPTION	ECN

INSTALLATION INSTRUCTION NUMBER PA28870A01		FMEA & CONTROL PLAN NUMBER N/A	
TITLE CD-920-F90 CUSTOMER DRAWING			
CUSTOMER DRAWING			
ITEM REVISION NAME R28876AA/00			
DATASET FILE NAME R28876AA-00-dwg1			
UNLESS OTHERWISE SPECIFIED, DIMENSIONAL TOLERANCES ARE: IN [ mm ] .x ± .1 [ 2.54 ] .xxx ± .005 [ .127 ] .xx ± .01 [ .25 ] ANGLES ± 5 ° 		MATERIAL: 4140 STEEL / RC 32-35	
THIRD ANGLE PROJECTION		DRAWING NUMBER: TD28876A01	
DRAWN BY BJPU	DATE 03/30/17	CHK JADE	SCALE 1:1
SHT 1 OF 1			SIZE A

2

1