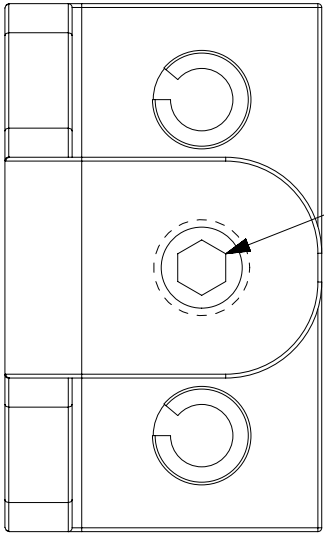
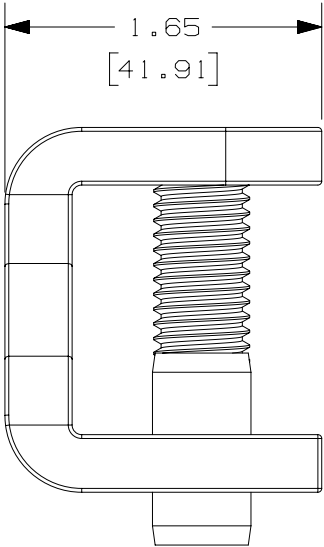


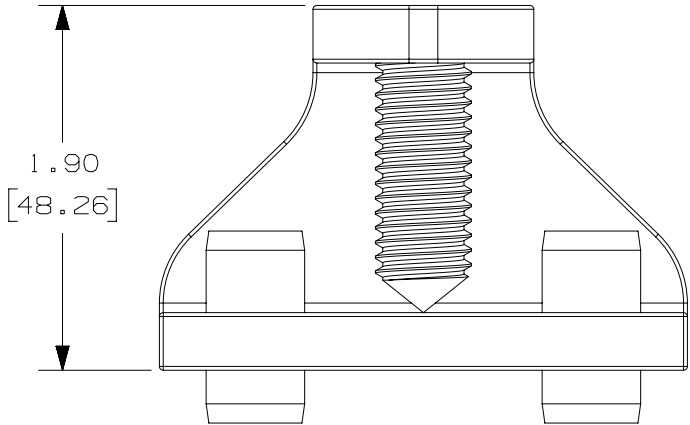
THIS COPY IS PROVIDED ON A RESTRICTED BASIS AND IS NOT TO BE USED IN ANY WAY DETRIMENTAL TO THE INTERESTS OF PANDUIT CORP.



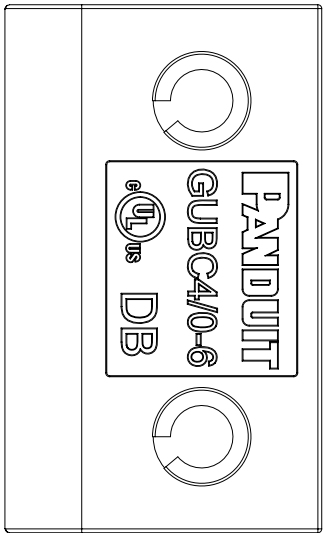
1/4" HEX SOCKET
25ft-lbs INSTALLATION TORQUE



1.65
[41.91]



1.90
[48.26]



2.75
[69.85]

Panduit Part Number	GUBC4/0-6
Material	Stainless Steel
Stud Size	NEMA 0.5"
Stud Spacing	NEMA 1.75"
Wire Range	#6 SOL - 4/0 STR
Flange Thickness	0.25"-0.625"
Flange Type	Straight or Angled
Installation Tool	1/4" Allen Wrench
Installation Torque	25ft-lbs
UL Listed	cULus 467 Listed


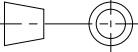
NOTES:

- DIMENSION ARE IN INCHES, DIMENSION IN BRACKETS ARE IN MILLIMETERS.
- UL LISTED AND UL LISTED FOR USE IN CANADA.
- SUITABLE FOR DIRECT BURIAL IN EARTH OR CONCRETE.
- COMES WITH A TUBE OF ANTI-OXIDANT JOINT COMPOUND.



DB
RATED

00D	11/08/16	KEC	RMHI	RGB	RELEASED TO PRODUCTION	00075LBD_DC
REV	DATE	BY	CHK	APR	DESCRIPTION	ECN

TITLE				
GUBC4/0-6				
Light-Duty Beam Grounding Clamp				
CUSTOMER DRAWING				
ITEM REVISION NAME				
00075LBD/00				
DATASET FILE NAME				
00075LBD_DC/00				
UNLESS OTHERWISE SPECIFIED, DIMENSIONAL TOLERANCES ARE: IN [mm]				
.X ± .1 [2.54] .XXX ± .005 [.127]			MATERIAL :	
.XX ± .03 [.75] ANGLES ± 5 °			Stainless Steel	
			DRAWING NUMBER:	
			00075LBD_DC	
DRAWN BY	DATE	CHK	SCALE	SIZE
KEC	06/21/16		1:1	B
SHT 1 OF 1				