

FIGURE 1

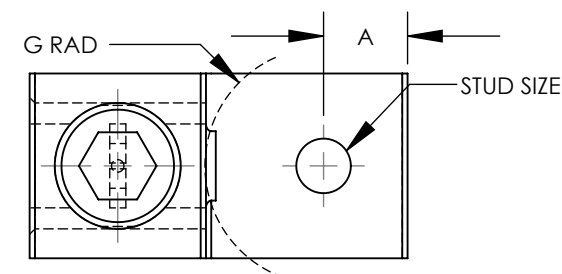
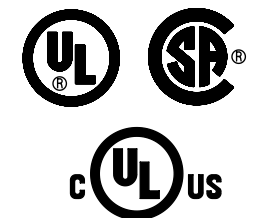



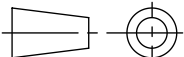
FIGURE 2

1. MATERIAL:  
BODY - ALUMINUM, TIN PLATED  
SCREW - ALUMINUM, TIN PLATED
2. UL LISTED & CSA CERTIFIED FOR USE UP TO 600V &  
TEMPERATURE RATED 90°C (AL9CU)  
NOTE: LAMA350-38-QY, LAMA500S-38-6Y, &  
LAMA600-38-6Y ARE cULus.
3. DUAL RATED FOR USE WITH COPPER OR ALUMINUM  
STRANDED CODE CONDUCTOR
4. THESE PARTS ARE RoHS COMPLIANT
5. USE OF OXIDE INHIBITING JOINT COMPOUND LIKE  
PANDUIT CMP-100 RECOMMENDED FOR PAD TO PAD  
AND CONDUCTOR SURFACES
6. SEE PACKAGING LABEL FOR TIGHTENING TORQUE  
INFORMATION
7. PKG QTY:  
Q = 25  
6 = 6



| PART<br>NUMBER | FIG. | WIRE RANGE<br>COPPER/ALUMINUM | WIRE STRIP<br>LENGTH IN[mm] | STUD SIZE<br>IN | DIMENSIONS - IN [mm] +/- .02 [.5] |             |             |            |             |             |             | HEX KEY* |
|----------------|------|-------------------------------|-----------------------------|-----------------|-----------------------------------|-------------|-------------|------------|-------------|-------------|-------------|----------|
|                |      |                               |                             |                 | A                                 | B           | C           | D          | E           | F           | G           |          |
| LAMA300-56-QY  | 1    | 6 AWG - 300kcmil              | 1.00 [25.4]                 | 5/16            | .45 [11.4]                        | 2.00 [50.8] | 1.00 [25.4] | .25 [6.4]  | 1.00 [25.4] | 1.13 [28.7] | .55 [14.0]  | 5/16     |
| LAMA350-38-QY  | 1    | 6 AWG - 350kcmil              | 1.13 [28.6]                 | 3/8             | .50 [12.7]                        | 2.26 [57.4] | 1.13 [28.6] | .25 [6.4]  | 1.13 [28.6] | 1.25 [31.7] | .62 [15.8]  | 5/16     |
| LAMA500-38-6Y  | 1    | 4 AWG - 500kcmil              | 1.22 [31.0]                 | 3/8             | .88 [22.2]                        | 2.81 [71.5] | 1.22 [31.0] | .31 [7.9]  | 1.50 [38.0] | 1.56 [39.7] | .71 [18.0]  | 1/2      |
| LAMA600-38-6Y  | 1    | 2 AWG - 600kcmil              | 1.38 [35.1]                 | 3/8             | .63 [15.9]                        | 3.18 [80.9] | 1.38 [35.1] | .44 [11.1] | 1.60 [40.6] | 1.57 [39.8] | 1.17 [29.7] | 1/2      |
| LAMA600S-38-6Y | 2    | 4 AWG - 600kcmil              | 1.31 [33.3]                 | 3/8             | .63 [16.0]                        | 2.81 [71.4] | 1.31 [33.3] | .31 [7.9]  | 1.38 [35.1] | 1.81 [46.0] | .88 [22.4]  | 3/8      |
| LAMA1000-58-6Y | 1    | 500kcmil - 1000kcmil          | 1.63 [41.3]                 | 5/8             | .81 [20.6]                        | 3.50 [88.9] | 1.63 [41.3] | .50 [12.7] | 1.75 [44.5] | 1.94 [49.2] | 1.06 [27.0] | 3/8      |

\* HEX SIZE MAY DIFFER FROM CHART. DIFFERENCE IN SIZE WILL NOT AFFECT FIT, FORM, OR FUNCTION OF PART

|     |       |      |      |     |  |             |   |  |
|-----|-------|------|------|-----|--|-------------|---|--|
|     |       |      |      |     |  |             | TITLE<br>LAMA SERIES 300kcmil THRU 1000kcmil<br>ALUMINUM MECHANICAL LUGS<br>CUSTOMER DRAWING                      |  |
|     |       |      |      |     |  |             | ITEM REVISION NAME<br>10N006AS/10   |  |
|     |       |      |      |     |  |             | DATASET FILE NAME<br>10N006AS-NC/10.SLDDRW  |  |
| 10  | 11/15 | JHNU | JHNU | RGB | REVISED NOTE 2: LAMA300, LAMA600S, LAMA1000 ARE UL/CSA<br>LAMA350, LAMA500, LAMA600, ARE cULus | 10N006AS-NC |                              |  |
| 09  | 11/14 | JHNU | JHNU | RGB | REVISED E DIMENSION FOR LAMA600-38-6Y: 1.60 WAS 1.50   | 10N006AS-NC | UNLESS OTHERWISE SPECIFIED,<br>DIMENSIONAL TOLERANCES ARE: IN [mm]<br>$.X \pm .XXX \pm$<br>$.XX \pm$ ANGLES $\pm$ |  |
| 08  | 3/14  | JHNU | JHNU | RGB | REVISED B DIMENSION FOR LAMA350-38-QY: 2.26 WAS 2.25   | 10N006AS-NC |  THIRD ANGLE<br>PROJECTION   |  |
| 07  | 2/13  | JHNU | JHNU | RGB | REVISED TITLE BLOCK  | 10N006AS-NC | MATERIAL<br><br>SEE NOTES<br><br>DRAWING NUMBER<br>10N006AS-NC  |  |
| REV | DATE  | BY   | CHK  | APR | DESCRIPTION  | ECN         | DRAWN BY<br>JHNU  |  |
|     |       |      |      |     |  |             | DATE<br>2/06  |  |
|     |       |      |      |     |  |             | CHK<br>RGB  |  |
|     |       |      |      |     |  |             | SCALE<br>NONE   |  |
|     |       |      |      |     |  |             | SHEET 1 OF 1  |  |
|     |       |      |      |     |  |             | SIZE<br>R   |  |