

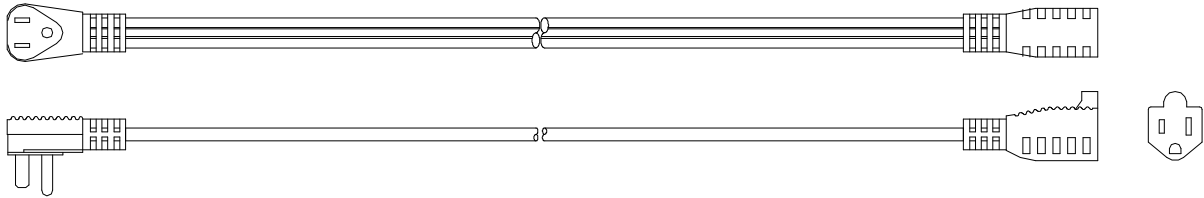


Southwire[®] SPECIFICATION

CATALOG NUMBER: See table below
DESCRIPTION: Major appliance SPT-3 extension cord
APPROVALS: UL/CUL Listed general use cord set

CONSTRUCTION PARAMETERS:

Cord type: SPT-3
 Cord length: See table below
 Conductor: Stranded bare copper, see table below for gauge
 Jacket material: PVC
 Cord rating per the NEC: Not hard usage



NEMA 5-15 shown, plug style may vary

Attachment plug configuration: Right angle, see table below for NEMA configuration
 Cord connector configuration: Straight, see table below for NEMA configuration
 Plug and connector material: PVC
 Plug and connector color: Matches cord

ELECTRICAL PROPERTIES:

Cable temperature rating: -20 to +60 °C
 Nominal operating voltage: See table below
 Maximum operating current: See table below

CATALOG NUMBERS

Catalog number	Gauge	Length	Color	NEMA config	Voltage (nom)	Current (max)	Case qty	UPC
35313323	14/3	3 ft	Beige	5-15	125V	15A	36	0 29892 03531
35323323		6 ft					24	0 29892 03532
35333323		9 ft					18	0 29892 03533
35353323		12 ft					12	0 29892 03535
35363323		15 ft					12	0 29892 03536
35378809	12/3	9 ft	Gray	6-20	250V	20A	18	0 29892 03537
35388809	14/3	9 ft		6-15		15A	12	0 29892 03538

This product complies with European Directive 2011/65/EU (RoHS-2,

The information presented here is, to the best of our knowledge, true and accurate. However, since conditions of use are beyond our control, all recommendations or suggestions are presented without guarantee or responsibility on our part.

We disclaim all liability in connection with the use of information contained herein or otherwise.

This specification is the proprietary intellectual property of Southwire Company LLC. Any information contained herein shall not be disclosed to any party without the written consent of Southwire Company LLC.