

## 32 Round Boxes, Adjustable

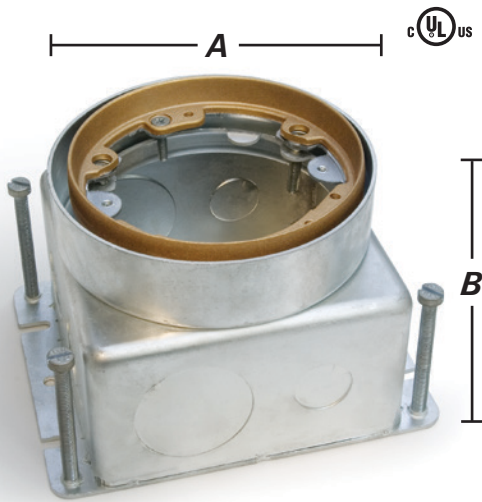
CATALOG #	DESCRIPTION	DIMENSIONS		ADJUST BEFORE	ADJUST AFTER	INTERIOR CAPACITY	CONDUIT OPENINGS	MAX TAP
		A	B					
532-58 ①	Deep, cast box, fully adjustable	4 1/4"	4 3/16"	X	3/8"	32 Cu. In.	Sides (4) 3/4"	1 1/4"
532-SB-58 ①	Shallow, cast box, fully adjustable	4 1/4"	3 5/16"	X	3/8"	24 Cu. In.	Sides (4) 3/4"	1 1/4"
532-SMB	Deep Stamped Steel, fully adjustable	4 11/16"	3 3/4"	2 1/4"	1/2"	57 Cu. In.	1/2", 3/4", 1", 1 1/4"	none
532-SMB-SB ③	Shallow, Stamped Steel, fully adjustable	4 11/16"	2 13/16"	2 1/4"	1/2"	43.8 Cu. In.	Sides (6) 1/2", (4) 3/4" Bottom (3) 1/2", (2) 3/4"	none
CATALOG #	DESCRIPTION	DIMENSIONS		ADJUST BEFORE	ADJUST AFTER	INTERIOR CAPACITY	CONDUIT OPENINGS	MAX TAP
		A	B					
332-58 ①	Shallow, cast box, semi adjustable	4 1/4"	2 1/8"	1"	X	12 Cu. In.	Sides (4) 3/4"	1"
MW-332-58 ①	Core drill cast box, semi adjustable	4 1/4"	2 1/8"	1/2"	X	12 Cu. In.	Sides (4) 3/4" ②	1"

① Add -A for Aluminum finish; ② additional 3/4" conduit opening in bottom of box;

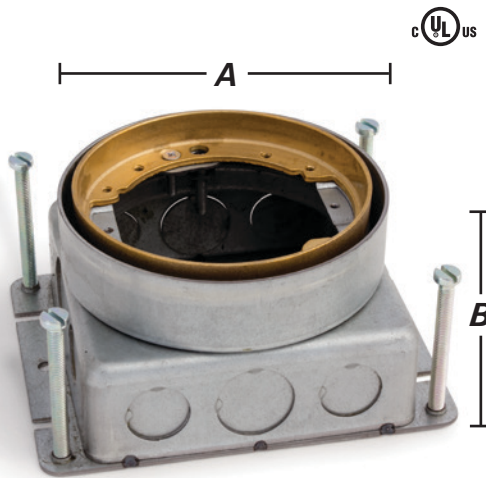
③ additional 3/4" (2) & 1/2" (2) conduit openings in bottom

>>>> All boxes UL listing #514A, #489H

532-SMB



532-SMB-SB



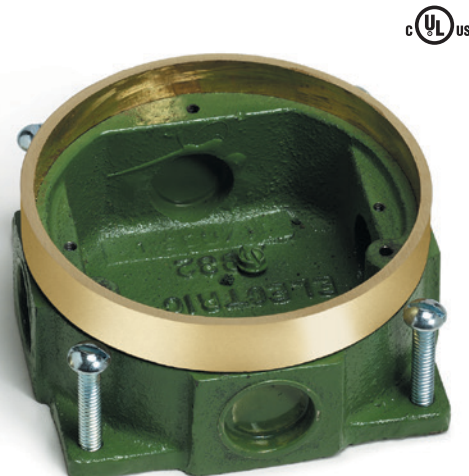
532-58



532-SB-58



332-58



MW-332-58

