

PHILIPS Stonco

Special Purpose

Roughlyte

Vaportight, CFL



VCXL



VWXL

Project: _____

Location: _____

Cat.No: _____

Type: _____

Quantity: _____

Notes: _____

Philips Stonco Roughlyte vaportight CF is available in wattages ranging from 26 to 42. Applications include wall, columns, ceilings and canopys in exterior applications. Roughlyte fixtures guard against moisture and debris in exterior applications (for globe down mounting only). Features include heat and shock resistant glass or polycarbonate globe and cast aluminum bayonet guard with Allen head security screws. Not recommended for hazardous locations.

Ordering guide

Example: VCXL26HFLEB1

Series	Wattage	Lamp Source	Ballast	Voltage
<input type="text"/>	<input type="text"/>	<input type="text" value="HFL"/>	<input type="text" value="EB"/>	<input type="text"/>
VCXL Ceiling mount	26 26W	HFL Compact fluorescent	EB Electronic ballast	1 120V
VWXL Wall mount	32 32W			4 277V
	42 42W			8 120-277V

Product Specifications

- Roughlyte fixtures guard against moisture and debris in exterior applications (for globe down mounting only).
- cULus listed for wet locations.
- **Not recommended for use in hazardous locations.**

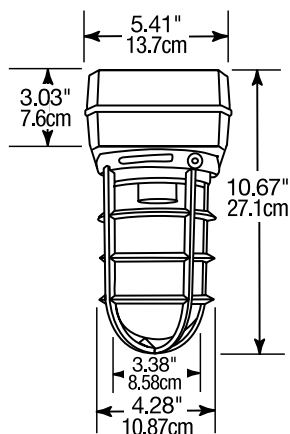
VCXL/VWXL Roughlyte vaportight

Compact fluorescent

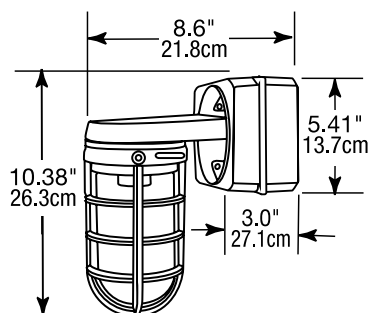
Specifications

- Precision die cast aluminum electrical enclosure.
- Die cast aluminum ballast box.
- Heat and shock resistant, prismatic glass optical chamber with neoprene gasketing.
- Corrosion resistant Draplex II polyester powder finish.
- Optional designer finishes available.
- Compact fluorescent ballasts are Electronic HPF >95%, <10% THD.
- PLT four pin base GX24q-3 (26/32W), GX24q-4 (42W).
- Starting temperature: 0°F/-18°C.
- Low glare clear prismatic glass globe standard.
- Approximately 40% uplight.
- UL 1598 listed for wet locations – globe down only.

Dimensions



VCXL



VCWL

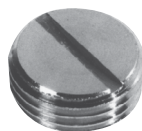
VCXL/VWXL Roughlyte vaportight

Compact fluorescent

Accessories



Roughlyte
Round Box



Roughlyte
Round Plug

4" Round boxes and plugs

Die-cast aluminum for use with conduit, Philips Stonco ceiling, surface and wall fixtures and flood lights. Four side and one back hole tapped 3/4" or 1/2", as shown. Heavy-duty gasket (except on VXL1), screws, four aluminum five-threaded plugs. No cover.

Catalog No.	Tap Size	Description	Catalog No.	NPT Size	Description
VXL1	1/2"	Mounting Box	V12	1/2"	Plug
VXL13	3/4"	Mounting Box	V13	3/4"	Plug



VG100
Clear Glass Globe



VGP100
Clear Prismatic Globe



VGR100
Ruby Glass Globe



VPRC10
Prismatic Lexan Globe

Colored and specialty globes

Full molded threads. Fit all Philips Stonco housings. Globes for vertical mounting only.

Catalog No.	Description	Catalog No.	Description
3-1/2" GLOBE DIA. GLASS Height - 6 11/16"		4-3/8" GLOBE DIA. GLASS Height - 8 3/8"	
VGC100	Clear*	VGC200	Clear*
VGCH100	Clear, heat tempered	VGCH200	Clear, heat tempered
VGP100	Clear, prismatic	VGP200	Clear, prismatic
VGA100	Amber	VGA200	Amber
VGB100	Blue	VGB200	Blue
VGG100	Green	VGG200	Green
VGR100	Ruby	VGR200	Ruby
3-1/2" GLOBE DIA. LEXAN		4-3/8" GLOBE DIA. LEXAN	
VPRC5	Clear, prismatic (60W Max.)	VPRC10	Clear, prismatic (75W Max.)

*Standard with all incandescent glass fixtures.

NOTE: Use of colored globes will down-rate wattage.



V127
Plated Wire Guard

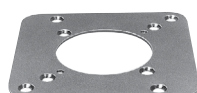


V131
Cast Aluminum Guard

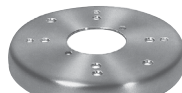
Guards

Wire guards are clamp-on type. Cast aluminum guards are twist on/off bayonet type, includes allen head security screws. Shipped with threaded ring adapter for use with standard threaded bases or the new RoughLyte bases.

WIRE GUARD		CAST GUARD	
Catalog No.	Fits Globe Diameter	Catalog No.	Fits Globe Diameter
V127	3-1/2"	V131	3-1/2"



VCN
Adapter



VCA1
Recessed Box Adapter
For use with VW
and HID Series only.

Adapter plates

Permits easy box mounting over various size boxes and plumb alignment. Heavy-gauge aluminum. Complete with gasket, screws.

Catalog No.	Use With	For Mounting On
VCP	VK Series	4" octagon boxes
VCP	VW Series	3-1/2" round boxes
VCN	VK & VW Series	4" octagon boxes
VCA1	VW Series and HID Series	Recessed boxes

© 2015 Koninklijke Philips N.V. All rights reserved.
Philips reserves the right to make changes in specifications and/or to discontinue any product at any time without notice or obligation and will not be liable for any consequences resulting from the use of this publication.
philips.com/luminaires



Philips Lighting, North America Corporation
200 Franklin Square Drive, Somerset, NJ 08873
Tel. 855-486-2216

Philips Lighting Canada Ltd.
281 Hillmount Rd, Markham, ON, Canada L6C 2S3
Tel. 800-668-9008