

Cast Device Boxes

For Rigid Conduit & IMC

Types

FS - Shallow

FD - Deep

Use:

Accommodates wiring devices and provides opening to splice, tap or pull conductors.

Features:

- Tapered threaded hubs (NPT) with integral bushings.
- Both FS and FD styles are deeper than similar boxes, providing greater internal volume.
- Internal grounding screw standard on all boxes.
- Mounting feet standard on FS, FD, FSC, FDC, FSA and FDA styles. FS/FD boxes without mounting lugs may be supported by the attached conduits per NEC Section 314-23(E).
- Available single gang, two gang and tandem styles.
- Suitable for use in wet locations when used with gasketed covers.
- Gray Iron is suitable for concrete use.
- For use with FS style covers on Pages AE3 and AE4 as well as standard device plates made of steel, brass, bakelite, etc.


Material/Finish:


Gray Iron/Zinc Electroplated/Aluminum Enamel.
Copper-free Aluminum/Aluminum Enamel.

Optional Finish:

For additional corrosion protection, specify Hot Dip Galvanized. Add suffix "G" to Gray Iron catalog number. Contact your local representative for pricing and availability.

Third Party Certification:

 UL Listed: E-18095
Raintight-Suitable for wet locations when used with gasketed covers.
See pages AE3 and AE4.

 CSA Certified: 009795
Raintight-Suitable for wet locations when used with gasketed covers.
See pages AE3 and AE4.

Dimensional Data:

See page AE6.

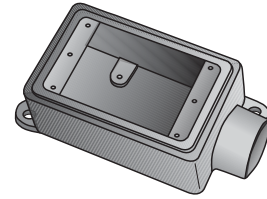
Applicable Third Party Standards:

Trade Size (inches)	Catalog Number Gray Iron	Catalog Number Aluminum
1/2	FS-1-50	FS-1-50A
3/4	FS-1-75	FS-1-75A
1	FS-1-100	
1/2	FD-1-50	FD-1-50A
3/4	FD-1-75	FD-1-75A
1	FD-1-100	
1/2	FSC-1-50	FSC-1-50A
3/4	FSC-1-75	FSC-1-75A
1	FSC-1-100	
1/2	FDC-1-50	FDC-1-50A
3/4	FDC-1-75	FDC-1-75A
1	FDC-1-100	
1/2	FSL-1-50	
3/4	FSL-1-75	
1/2	FDL-1-50	
3/4	FDL-1-75	
1/2	FSR-1-50	
3/4	FSR-1-75	
1/2	FDR-1-50	
3/4	FDR-1-75	
1/2	FSS-1-50	FSS-1-50A
3/4	FSS-1-75	FSS-1-75A
1/2	FDA-1-50	
3/4	FDA-1-75	

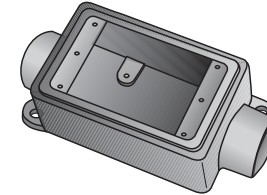
UL Standard: 514A
CSA Standard: C22.2 No. 18
Fed Spec: A-A-50563
NEMA: FB-1

Suggested Specifications:

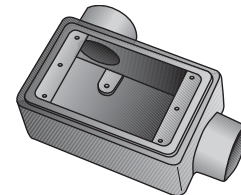
Where cast device boxes are required for mounting wiring devices or splicing, taps or pulling conductors, they are zinc electroplated gray iron with aluminum enamel or copper-free aluminum. They are UL Listed and CSA Certified for wet locations when used with gasketed covers.



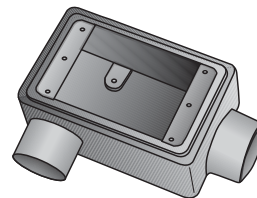
Type FS & FD
Single Gang with mounting feet



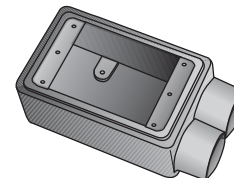
Type FSC & FDC
Single Gang with mounting feet



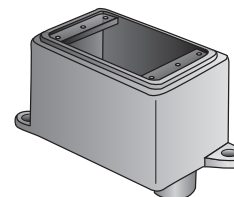
Type FSL & FDL
Single Gang without mounting feet



Type FSR & FDR
Single Gang without mounting feet



Type FSS
Single Gang without mounting feet



Type FSA & FDA
Single Gang with mounting feet

Cast Device Boxes

For Rigid Conduit & IMC

Types

FS - Shallow

FD - Deep

Use:

Accommodates wiring devices and provides opening to splice, tap or pull conductors.

Features:

- Tapered threaded hubs (NPT) with integral bushings.
- Both FS and FD styles are deeper than similar boxes, providing greater internal volume.
- Internal grounding screw standard on all boxes.
- Mounting feet standard on FS, FD, FSC, FDC, FSA and FDA styles. FS/ FD boxes without mounting lugs may be supported by the attached conduits per NEC Section 314-23(E).
- Available single gang, two gang and tandem styles.
- Suitable for use in wet locations when used with gasketed covers.
- Gray Iron is suitable for concrete use.
- For use with FS style covers on Pages AE3 and AE4 as well as standard device plates made of steel, brass, bakelite, etc.

Material/Finish:

Gray Iron/Zinc Electroplated/Aluminum Enamel.
Copper-free Aluminum/Aluminum Enamel.

Optional Finish:

For additional corrosion protection, specify Hot Dip Galvanized. Add suffix "G" to Gray Iron catalog number. Contact your local representative for pricing and availability.

Third Party Certification:



UL Listed:
E-18095
Raintight-Suitable for wet locations when used with gasketed covers. See pages AE3 and AE4.



CSA Certified:
009795
Raintight-Suitable for wet locations when used with gasketed covers. See pages AE3 and AE4.

Dimensional Data:

See page AE6.

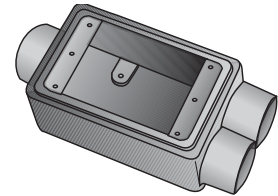
Trade Size (inches)	Catalog Number Gray Iron	Catalog Number Aluminum
1/2	FSCC-1-50	
3/4	FSCC-1-75	FSCC-1-75A
1/2	FDCC-1-50	
3/4	FDCC-1-75	
1/2	FSCT-1-50	
3/4	FSCT-1-75	
1	FSCT-1-100	
1/2	FDCT-1-50	
3/4	FDCT-1-75	
1	FDCT-1-100	
1/2	FSX-1-50	
3/4	FSX-1-75	
1/2	FDX-1-50	
3/4	FDX-1-75	
1/2	FS-2-50	
3/4	FS-2-75	FS-2-75A
1	FS-2-100	
1/2	FD-2-50	
3/4	FD-2-75	
1	FD-2-100	
1/2	FSC-2-50	
3/4	FSC-2-75	FSC-2-75A
1	FSC-2-100	
1/2	FDC-2-50	
3/4	FDC-2-75	
1	FDC-2-100	
3/4	FS-2T-75	

Applicable Third Party Standards:

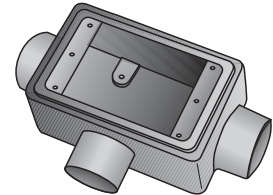
UL Standard: 514A
CSA Standard: C22.2 No. 18
Fed Spec: A-A-50563
NEMA: FB-1

Suggested Specifications:

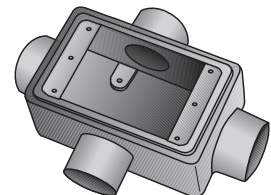
Where cast device boxes are required for mounting wiring devices or splicing, taps or pulling conductors, they are zinc electroplated gray iron with aluminum enamel or copper-free aluminum. They are UL Listed and CSA Certified for wet locations when used with gasketed covers.



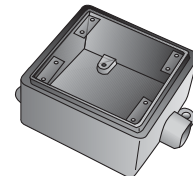
Type FSCC & FDCC
Single Gang without mounting feet



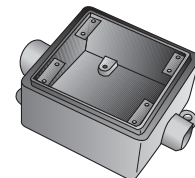
Type FSCT & FDCT
Single Gang without mounting feet



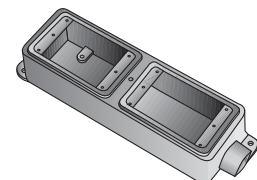
Type FSX & FDX
Single Gang without mounting feet



Type FS-2 & FD-2
Two Gang with mounting feet



Type FSC-2 & FDC-2
Two Gang with mounting feet



Type FS-2T
Tandem with mounting feet

Cast Device Box Covers

For FS & FD Boxes

Types FS-1, FS-2

Use:

To cover and seal FS and FD style boxes and to mount wiring devices.

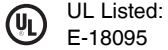
Features:

- Various styles and sizes to meet most applications.
- Stainless Steel screws to prevent corrosion (on blank gray iron covers only).
- Blank covers are weatherproof when used with sealing gaskets (ordered separately). See page AE4.
- Covers also mount on ordinary boxes with standard device box openings.

Material/Finish:

Gray Iron/Zinc-Electroplated
Steel/Zinc-Electroplated
Aluminum/Aluminum Enamel

Third Party Certification:



UL Listed:
E-18095



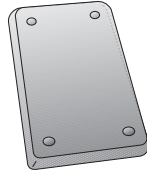
CSA Certified:
009795

Applicable Third Party Standards:

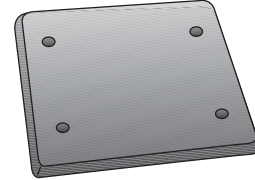
UL Standard: 514A
CSA Standard: C22.2 No. 18
Fed Spec: A-A-50563
NEMA: FB-1, OS-1

Catalog Number	
Single Gang	Two Gang
FS-1-BCS	FS-2-BCS
FS-1-BC	FS-2-BC
FS-1-BCA	FS-2-BCA
FS-1-SCS	FS-2-SCS
FS-1-DCS	FS-2-DCS
FS-1-DC	FS-2-SDCS
FS-1-DCA	
FS-1-LRCS	
FS-1-SRCS	

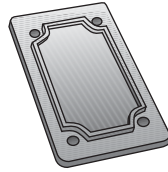
Suitable for Wet Locations When Installed With Sealing Gaskets.



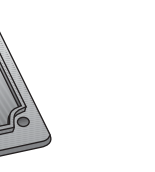
Blank Steel
FS-1-BCS



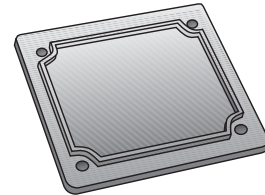
Blank Steel
FS-2-BCS



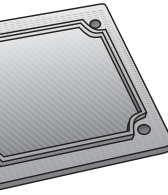
Blank
Gray Iron
FS-1-BC



Blank
Cast Aluminum
FS-1-BCA

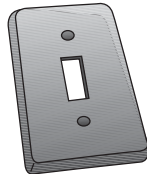


Blank
Gray Iron
FS-2-BC

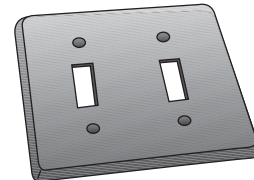


Blank
Cast Aluminum
FS-2-BCA

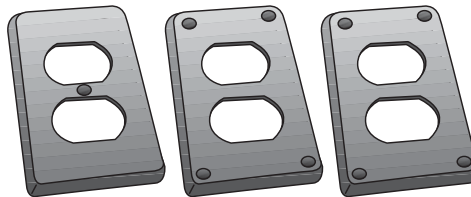
Suitable for Dry Locations Only.



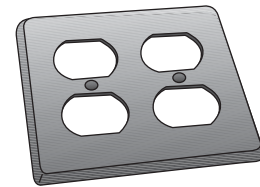
Toggle Switch
Steel
FS-1-SCS



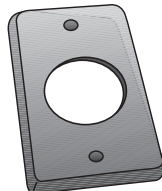
Toggle Switch
Steel
FS-2-SCS



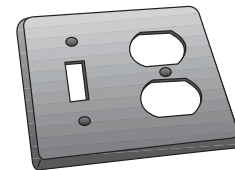
Duplex Receptacle
Cast Iron or
Steel
FS-1-DCS Gray Iron
FS-1-DC Cast Alum.
FS-1-DCA



Duplex Receptacle
Steel
FS-2-DCS



Round Receptacle
1 1/8 dia.. Steel 1 1/32 dia.. Steel
FS-1-LRCS FS-1-SRCS



Toggle Switch &
Duplex Receptacle
Steel
FS-2-SDCS

Cast Device Box Covers & Gaskets

Suitable for Wet Locations

Types FS-1, FS-2

Use:

To cover and seal FS and FD style boxes and to mount wiring devices.


Features:


- Various styles and sizes to meet most applications.
- Stainless steel screws to prevent corrosion.
- All wet location covers supplied with sealing gaskets.
- Covers also mount on ordinary boxes with standard device box openings.

Material/Finish:

Aluminum/Aluminum Enamel
Neoprene Gaskets

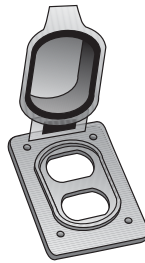
Third Party Certification:

 UL Listed:
E-18095

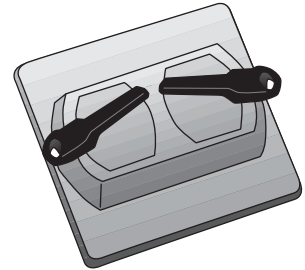
 CSA Certified:
009795

Applicable Third Party Standards:

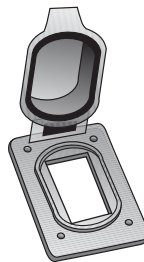
UL Standard: 514A
CSA Standard: C22.2 No. 18
Fed Spec: A-A-50563
NEMA: FB-1



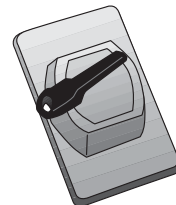
Duplex Receptacle
Die-Cast Aluminum
FS-1-WDCA



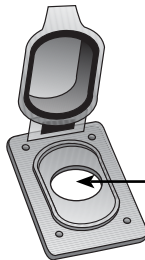
Locking Toggle Switch
Sand-cast Aluminum
FS-2-WSCA



Ground Fault Receptacle
Aluminum
FS-1-GFCA



Locking Toggle Switch
Sand-cast Aluminum
FS-1-WSCA



Electrical Rating
15 Amp - 125 Volts
15 Amp - 250 Volts
20 Amp - 125 Volts

1 13/32" Diameter

Round Receptacle
Die-cast Aluminum
FS-1-WRCA



Pull Switch
Sand-cast Aluminum
FS-1-WPCA

Catalog Number

<u>Single Gang</u>	<u>Two Gang</u>
FS-1-WDCA	FS-2-WSCA
FS-1-WRCA	FS-2-SG
FS-1-GFCA	
FS-1-SG	
FS-2-WSCA	
FS-1-WPCA	



Sealing Gasket
Neoprene
FS-1-SG



Sealing Gasket
Neoprene
FS-2-SG