

COMPRESSION CONNECTORS

Long Barrel Stacking

Copper Lugs

SL-N SERIES



FEATURES

- Designed for use with the L-N Series.
- Produced from high conductivity copper tubing for heavy duty applications.
- Tin-Plated to provide corrosion resistance.
- Marked with die index and color coded.
- Additional hole spacing options available on request.
- For use with LN Series.

RATINGS

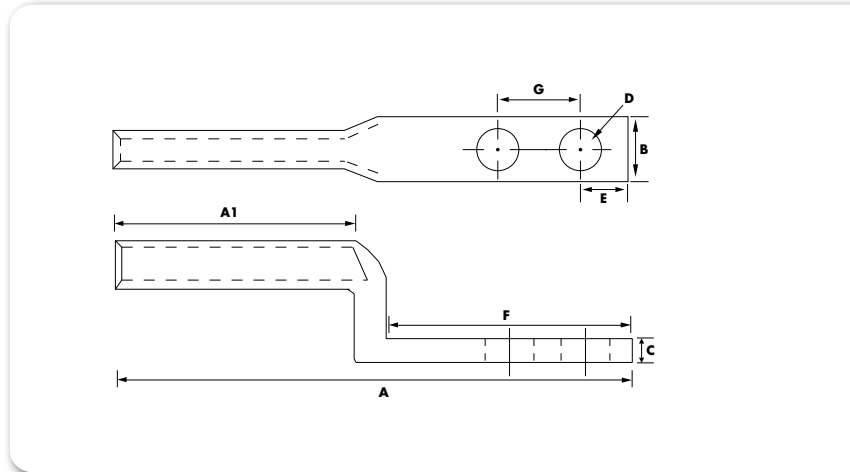


TEMPERATURE RATING:
90 °C.

RATING:
600V.

Max ampacity is based on NEC 310.15, insulation type, and conductor material. Please consult your current NEC manual.

* CLASS B OR C BUILDING WIRE CU CABLE ONLY



All dimensional data is listed in inches.

CAT. NO.	WIRE RANGE	EXPANDED WIRE RANGE*	COLOR CODE	BOLT SIZE	MTG. HOLE SPACING (G)	LENGTH (A)	WIDTH (B)	END CONN. TO CTR. (E)	TANG LENGTH (F)	BARREL LENGTH (A1)	STD. CTN. QTY.
SL40N	4/0 AWG	4/0 - 1 AWG	Purple	0.500	1.750	5.188	1.500	0.625	3.000	1.625	25
SL250N	250 MCM	250 MCM - 1/0 AWG	Yellow	0.500	1.750	5.438	1.125	0.625	3.000	1.688	25
SL300N	300 MCM	300-2/0 AWG	White	0.500	1.750	5.580	1.083	0.625	3.000	1.715	25
SL350N	350 MCM	350 MCM - 3/0 AWG	Red	0.500	1.750	5.750	1.938	0.625	3.000	1.875	25
SL500N	500 MCM	500 - 250 MCM	Brown	0.500	1.750	6.063	1.563	0.625	3.125	2.250	6
SL600N	600 MCM	600 - 250 MCM	Green	0.500	1.750	6.750	1.688	0.625	3.125	2.625	6
SL750N	750 MCM	750 - 500 MCM	Black	0.500	1.750	6.800	1.758	0.660	2.980	2.957	3

*EXPANDED WIRE RANGE when installed with NSI N121D dieless compression tool.
UL Listed with other tools:

FOR TOOL & DIE CRIMPING INFORMATION, PLEASE SEE TABLE ON PAGE 143



Scan QR to view
Tool & Die Charts