



LED Step Lights

SLED1 SLED2 SLED3

Wet Location and IC Rated
120V - 277V

DATE: _____ TYPE: _____

FIRM NAME: _____

PROJECT: _____



APPLICATIONS:

The LED step light is ideal for a wide variety of interior and exterior applications including commercial, retail and residential applications. Fixture should be installed in applications where ambient temperatures do not exceed 50° C (122°F). Installations in applications that exceed this temperature will result in a reduction of lamp life.

FIXTURE:

SLED1 – With a modern low profile die cast aluminum face plate, this high output, LED step light is the ultimate in the LiteStep collection. The highly efficient SLED1 offers the smoothest and broadest light distribution pattern. **SLED2** – SLED2 is LiteStep's premium level and provides a smooth, broad light distribution. Made of modern die cast aluminum, the recessed LED step light offers energy efficient benefits. Additionally SLED2 is IP45 rated. **SLED3** – Offering adequate levels of light distribution, wattage consumption, and efficiency, SLED3 is the primary level of the LiteStep step lights. SLED3 is the most economically priced LED step light. IP56 rated.

HOUSING:

Die cast aluminum housing with either a durable black baked powder coat or clear anodized finish. 1/2" NPT conduit port located on either side of the housing. Silicone gasket ensures a good seal.

FACE PLATE:

SLED1 and 2 have a die cast aluminum trim and SLED3 has a stamped aluminum trim with a solite lens and a silicone gasket. Available in Black (BL), White (WH), Zet (Z) or Bronze (BZ).

LED LIGHT ENGINE:

Each array consists of LED modules mounted on a fixed aluminum heat sink to ensure optimal optical performance and 50,000 hour life at 70% lumen maintenance.

LED DRIVER:

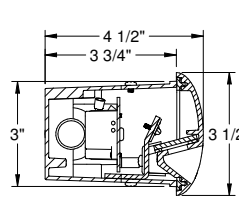
120V - 277V Solid state electronic 350mA constant current FCC class B driver. 50,000 hour minimum anticipated life. Rated for -30°C starting temperature. Driver is accessible through the housing for servicing.

LABELS:

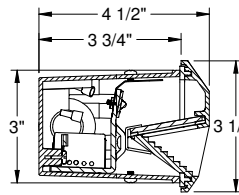
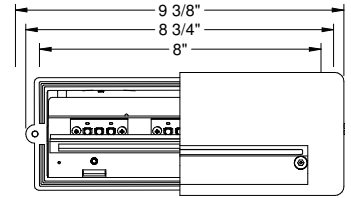
CSA C/US listed. Suitable for wet location and concrete pour. Approved for exterior and interior installations. IC rated. SLED2 is IP45 and SLED3 is IP56 rated.

WARRANTY:

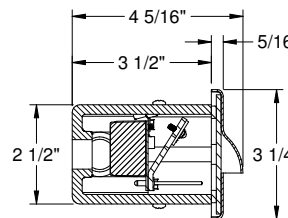
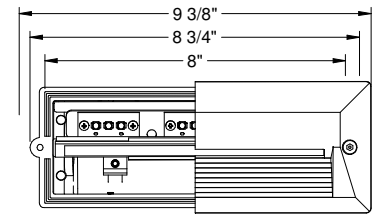
5 year warranty available
Go to www.prescolite.com for full details.



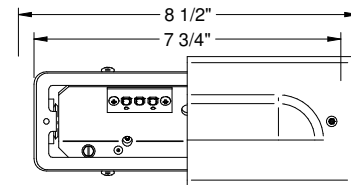
SLED1



SLED2



SLED3



CATALOG NUMBER:

EXAMPLE: SLED135KBL

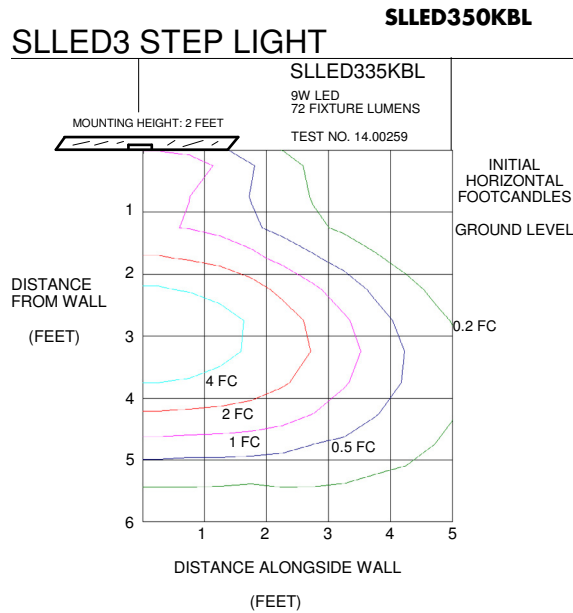
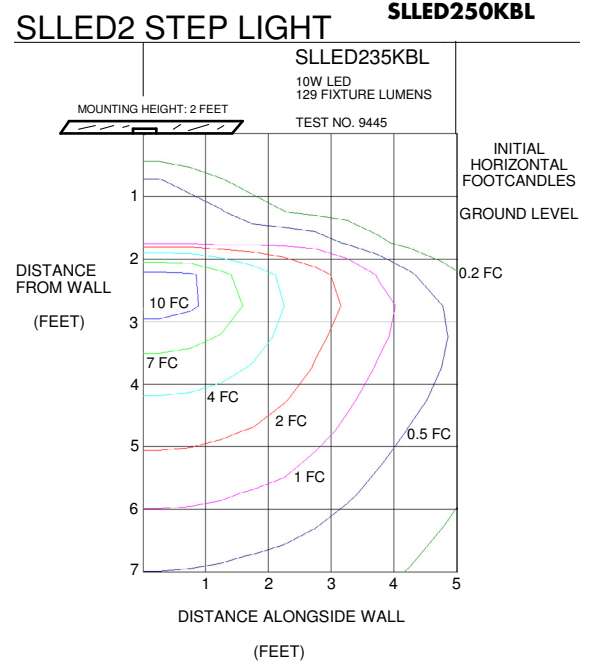
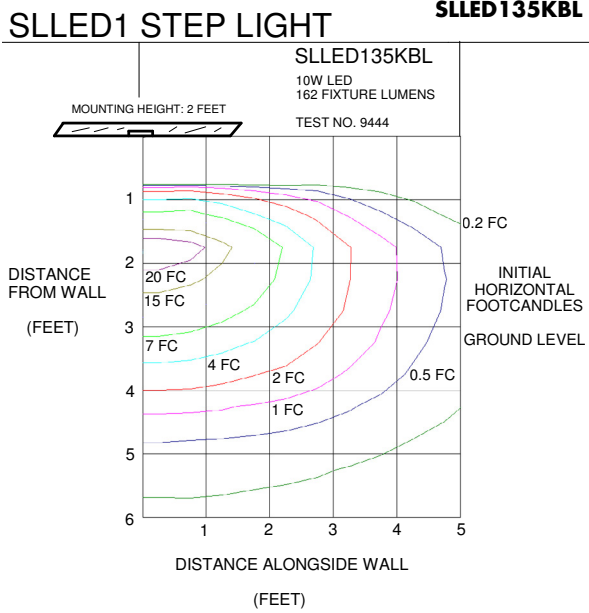
HOUSING	LED COLOR TEMP	FACE PLATE	HOUSING OPTION	HOUSING ACCESSORIES
<input type="checkbox"/> SLED1 High output LED step light <input type="checkbox"/> SLED2 Recessed LED step light <input type="checkbox"/> SLED3 Residential LED step light	<input type="checkbox"/> 30K 3000 Kelvin <input type="checkbox"/> 35K 3500 Kelvin <input type="checkbox"/> 40K 4000 Kelvin <input type="checkbox"/> 50K 5000 Kelvin	<input type="checkbox"/> WH White <input type="checkbox"/> BL Black <input type="checkbox"/> Z Zet <input type="checkbox"/> BZ Bronze	<input type="checkbox"/> Blank 120V-277V	<input type="checkbox"/> SLMB Dry wall bar hanger installation kit. <input type="checkbox"/> SLD12CMB Concrete mounting box SLED1 and SLED2 <input type="checkbox"/> SLD3CMB Concrete mounting box SLED3 <input type="checkbox"/> LiteGear ¹ Inverter, single phase central lighting, 125VA-250VA <input type="checkbox"/> LPS Series ¹ LitePower micro-inverter, 20VA-55VA

¹See Central Inverter compatibility note and web links on page 3.

PHOTOMETRIC DATA

LiteStep - LED Step Lights

DRIVER DATA Input Parameter	SLED1 & SLED2			SLED3		
	10W			9W		
	Value	Units	Value	Units		
Input Voltage	120	277	VAC	120	277	VAC
System Wattage	12.6	12.6	W	8.7	8	W
Input Current	0.08	.04	A	0.08	0.03	A
Frequency HZ	50/60	50/60	HZ	50/60	50/60	60
Power Factor	0.94	0.94	-	0.94	.94	-
Total Harmonic Distortion	<70%	<70%	-	<70%	<70%	-



NOTES: Refer to www.prescolite.com for additional photometric tests (IES Files).

1. Operation in ambient temperatures higher than those specified may shorten life and will void warranty.

Tested in accordance with IESNA LM-79 2008 standards



Web: www.prescolite.com • Tech Support: (888) 777-4832
701 Millennium Boulevard • Greenville, SC 29607 U.S.A. • Phone (864) 678-1000
Copyright ©2016 Prescolite, Inc., a division of Hubbell Lighting, Inc. All Rights Reserved
Specifications subject to change without notice. • Printed in U.S.A. • LS-LED-003 • 7/22/16



PHOTOMETRIC DATA

Central Inverters

For full fixture output in back-up mode, we recommend you visit www.dual-lite.com for your Central Lighting Inverter options. Please contact your local Hubbell representative for any assistance with proper sizing and loading of your inverter selection. Central lighting inverters must be ordered separately.

LiteGear: www.dual-lite.com/products/litegear_lg_series

LPS Series: www.dual-lite.com/products/lps



Web: www.prescolite.com • Tech Support: **(888) 777-4832**
701 Millennium Boulevard • Greenville, SC 29607 U.S.A. • Phone (864) 678-1000
Copyright ©2016 Prescolite, Inc., a division of Hubbell Lighting, Inc. All Rights Reserved
Specifications subject to change without notice. • Printed in U.S.A. • LS-LED-003 • 7/22/16



HUBBELL
Lighting, Inc.