

Rittal – The System.

Faster – better – everywhere.

Section for cable entry, rear for TS, SE, CM, TP – TS 8802.125

Date : May 29, 2018

ENCLOSURES

POWER DISTRIBUTION

CLIMATE CONTROL

IT INFRASTRUCTURE

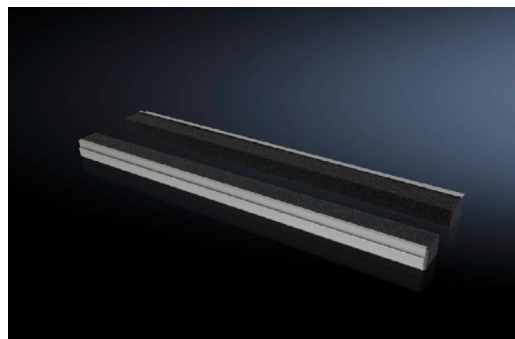
SOFTWARE & SERVICES

FRIEDHELM LOH GROUP



Section for cable entry, rear for TS, SE, CM, TP – TS 8802.125

created: 29.05.2018 build on www.rittal.com/us-en



Product description

Description:	To seal the cable entry on the base opening.
Benefits:	Particularly well-suited to cables with identical cross-sections When installing the mounting plate in the rearmost position, the cables may be routed directly without large bending radii.
Applications:	Mount directly on the base opening/base tray and base plate
Material:	Extruded aluminum section Foam rubber cable clamping profile: PU foam
Technical specifications:	Foam rubber cable clamping profile: Cross-section: 30 x 25 mm
Protection category IP to IEC 60 529:	IP 55 if correctly installed
Supply includes:	Plug-in sections, incl. foam rubber clamp strip
Note:	2 pc(s). are sufficient for one base opening up to an enclosure width of 800 mm From an enclosure width of 1,000 mm, two base openings are provided. 4 units per enclosure may be fitted

Product features

Suitable for:	Enclosure type: TS 8 Enclosure type: CM Enclosure type: TP Width: 1200 mm (47 ")
----------------------	---

Packaging unit:	4 pc(s).
Weight/packaging unit:	0.43 kg (1 lb.)
EAN:	4028177496385
Customs tariff number:	76042990
ETIM 6.0:	EC002624
ETIM 5.0:	EC002624
eCl@ss 8.0/8.1:	27189265
eCl@ss 7.0/7.1:	27400604
eCl@ss 6.0/6.1:	27400604
eCl@ss 5.1/5.1.4:	27189222
Product description (long):	TS Section for cable entry, rear, for TS, SE, CM, TP, for W: 1200 mm
Approvals	
Certificates:	EAC