



WIREMOLD®

6000® Series Raceway

Chemin de câbles de série 6000®

Conducto eléctrico serie 6000®

No: 41401R1 0517

Installation Instructions • Notice d'Installation • Instrucciones de Instalación

Catalog Number(s) • Numéro(s) de catalogue • Número(s) de catálogo: 660B, 640C, 6000B-10, 4000WC, 6001, 6001DA, 6006, 6007C-1, 6007C-2, 6008A, 6010B, 6011TX, 6012TX, 6014A, 6017TX, 6074, 6074A, 6086, 6046KD

Country of Origin • Pays d'origine • País de origen: Made in USA • Fabriqué aux USA • Hecho en USA

IMPORTANT:

Please read all instructions before beginning installation

Legrand electrical systems conform to and should be properly grounded in compliance with requirements of the current National Electrical Code or codes administered by local authorities.

All electrical products may present a possible shock or fire hazard if improperly installed or used. Legrand electrical products may bear the mark of a Nationally Recognized Testing Laboratory and should be installed in conformance with current local and/or the National Electrical Code.

NOTE:

All unblocked openings intended for wiring devices, fittings or accessories must be closed off by appropriate wiring devices, fittings or accessories prior to initial circuit energization.

IMPORTANT :

Veillez lire l'ensemble des instructions avant de commencer l'installation.

Les systèmes électriques Legrand sont conformes au Code National de l'électricité (National Electrical Code) ou aux codes locaux en vigueur et doivent être mis à la terre conformément à ces codes.

Tous les produits électriques peuvent présenter un risque d'électrocution ou d'incendie s'ils ne sont pas installés ou utilisés correctement. Les produits électriques Legrand peuvent porter la marque d'un laboratoire reconnu et doivent être installés conformément au Code national de l'électricité et/ou aux codes locaux en vigueur.

Remarque :

Toutes les ouvertures non bloquées destinées aux câbles, aux raccords ou aux accessoires doivent être fermées par des dispositifs de câblage, des raccords ou des accessoires appropriés avant l'activation du circuit initial.

IMPORTANTE:

Lea todas las instrucciones antes de comenzar la instalación.

Los sistemas eléctricos Legrand cumplen con los requisitos del Código Eléctrico Nacional (National Electrical Code, NEC) actual o con los códigos impuestos por las autoridades locales y deben conectarse a tierra consecuentemente.

Todos los productos eléctricos pueden presentar un riesgo de descarga o incendio si se los instala o utiliza incorrectamente. Los productos eléctricos Legrand pueden llevar la marca de un laboratorio de pruebas reconocido a nivel nacional y se deben instalar conforme al código local en vigencia o al Código Eléctrico Nacional.

Nota:

Todas las aperturas desbloqueadas de los dispositivos de cableado, equipamiento o accesorios deben cerrarse con los dispositivos de cableado, equipamiento o accesorios adecuados antes del suministro inicial de energía al circuito.

6000 SERIES RACEWAY WIRE FILL CAPACITIES FOR COMMUNICATIONS

| | CABLE/WIRE SIZE | O.D. (APPROX. DIA.) | | DIVIDED 40% FILL | UNDIVIDED 40% FIL |
|--------------|-------------------------|---------------------|---------|---------------------|----------------------|
| | | Inches | (mm) | | |
| UNSHIELDED | 4-pair, 24 AWG, Cat 3 | 0.190 | (4.8) | 101 | 225 |
| TWISTED PAIR | 4-pair, 24 AWG, Cat 5e | 0.210 | (5.3) | 83 | 184 |
| | 4-pair, 24 AWG, Cat 6 | 0.250 | (6.3) | 58 | 130 |
| | 4-pair, 24 AWG, Cat 6a* | 0.354 | (9.0) | 29 | 65 |
| | 25-pair, 24 AWG | 0.410 | (10.4) | 21 | 48 |
| COAXIAL | RG6/U | 0.270 | (6.9) | 50 | 111 |
| FIBER | ZipCord | 0.118 x 0.236 | (3 x 6) | 103 | 230 |
| | Round 4 Strand Fiber | 0.187 | (4.8) | 104 | 233 |
| | Round 6 Strand Fiber | 0.256 | (6.5) | 55 | 124 |

* Category 6 augmented (6a) cable for 10 gigabit ethernet – max allowed cable diameter per addenda No. 11 ANSI TIA/EIA 568-B.2.

6000 SERIES RACEWAY WIRE FILL CAPACITIES FOR POWER

| WIRE SIZE | | O.D. | | NUMBER OF CONDUCTORS (40% FILL) | | | | | | | |
|-----------|--------|--------|-----------|---------------------------------|-----------|--|-----------|--|-----------|---|--|
| | | | | WITHOUT DEVICES | | WITH DUPLEX RECT. DEVICES 1.59in. ² (1025mm ²) | | WITH SURGE/ GFCI DEVICES 2.30in. ² (1485mm ²) | | LARGE SINGLE RECEPTACLES 3.00in. ² (1935mm ²) | |
| THHN/THWN | Inches | (mm) | Undivided | Divided | Undivided | Divided | Undivided | Divided | Undivided | Divided | |
| 14 AWG | 0.111 | (2.8) | 659 | 296 | 528 | 231 | 470 | 202 | 412 | 173 | |
| 12 AWG | 0.130 | (3.3) | 481 | 216 | 395 | 168 | 342 | 147 | 300 | 126 | |
| 10 AWG | 0.164 | (4.2) | 303 | 136 | 243 | 106 | 216 | 92 | 189 | 79 | |
| 8 AWG | 0.216 | (5.5) | 174 | 78 | 140 | 61 | 124 | 53 | 109 | 45 | |
| 6 AWG | 0.254 | (6.5) | 126 | 56 | 101 | 44 | 89 | 38 | 78 | 33 | |
| 4 AWG | 0.324 | (8.2) | 77 | 34 | 0 | 0 | 0 | 0 | 0 | 0 | |
| 3 AWG | 0.352 | (8.9) | 65 | 29 | 0 | 0 | 0 | 0 | 0 | 0 | |
| 2 AWG | 0.384 | (9.8) | 55 | 24 | 0 | 0 | 0 | 0 | 0 | 0 | |
| 1 AWG | 0.446 | (11.3) | 40 | 18 | 0 | 0 | 0 | 0 | 0 | 0 | |
| 1/0 AWG | 0.496 | (12.3) | 34 | 15 | 0 | 0 | 0 | 0 | 0 | 0 | |
| 2/0 AWG | 0.532 | (13.5) | 28 | 12 | 0 | 0 | 0 | 0 | 0 | 0 | |

NOTE: Use No. 8 (5/16", 7.9mm head size) flat head fastener or equivalent to mount base to surface.

NOTE: Grounding: Use ground location when provided or install a suitable ground lug, ring terminal or locknut and ground bushing.

CAPACITÉS DE REMPLISSAGE DU CHEMIN DE CÂBLES DE SÉRIE 6000 POUR LES CÂBLES DE COMMUNICATION

| | CALIBRE DES CÂBLES/FILS | D.E. (DIAMÈTRE APPROX.) | | DIVISÉ REEMPL. 40 % | NON DIVISÉ REEMPL. 40 % |
|----------------|----------------------------|-------------------------|---------|------------------------|----------------------------|
| | | Pouces | (mm) | | |
| NON BLINDÉ | 4 paires, 24 AWG, Cat. 3 | 0,190 | (4,8) | 101 | 225 |
| PAIRE TORSADÉE | 4 paires, 24 AWG, Cat. 5e | 0,210 | (5,3) | 83 | 184 |
| | 4 paires, 24 AWG, Cat. 6 | 0,250 | (6,3) | 58 | 130 |
| | 4 paires, 24 AWG, Cat. 6a* | 0,354 | (9,0) | 29 | 65 |
| | 25 paires, 24 AWG | 0,410 | (10,4) | 21 | 48 |
| | COAXIAL | RG6/U | 0,270 | (6,9) | 50 |
| FIBRE | Zipcord | 0,118 x 0,236 | (3 x 6) | 103 | 230 |
| | Fibre ronde à 4 brins | 0,187 | (4,8) | 104 | 233 |
| | Fibre ronde à 6 brins | 0,256 | (6,5) | 55 | 124 |

* Câble de catégorie 6 améliorée (6a) pour 10 gigabit Ethernet – diamètre maxi du câble autorisé selon l'addenda n° 11 ANSI TIA/EIA 568-B.2.

CAPACITÉS DE REMPLISSAGE DU CHEMIN DE CÂBLES DE SÉRIE 6000 POUR LES CÂBLES D'ALIMENTATION

| CALIBRE DES CÂBLES | | NOMBRE DE CONDUCTEURS (40 % DE REMPLISSAGE) | | | | | | | | |
|--------------------|---------------------|---|--------|--|--------|---|--------|---|--------|--|
| | | SANS | | AVEC DUPLEX DISPOSITIFS DE PRISE 1,59 po ² (1 025 mm ²) | | AVEC SURTENSION/ DISPOSITIFS DDFT 2,30 po ² (1 485 mm ²) | | GRANDS DISPOSITIFS SIMPLES PRISES 3,00 po ² (1 935 mm ²) | | |
| THHN/THWN | D.E. Pouces (mm) | Non divisé | Divisé | Non divisé | Divisé | Non divisé | Divisé | Non divisé | Divisé | |
| 14 AWG | 0,111 (2,8) | 659 | 296 | 528 | 231 | 470 | 202 | 412 | 173 | |
| 12 AWG | 0,130 (3,3) | 481 | 216 | 395 | 168 | 342 | 147 | 300 | 126 | |
| 10 AWG | 0,164 (4,2) | 303 | 136 | 243 | 106 | 216 | 92 | 189 | 79 | |
| 8 AWG | 0,216 (5,5) | 174 | 78 | 140 | 61 | 124 | 53 | 109 | 45 | |
| 6 AWG | 0,254 (6,5) | 126 | 56 | 101 | 44 | 89 | 38 | 78 | 33 | |
| 4 AWG | 0,324 (8,2) | 77 | 34 | 0 | 0 | 0 | 0 | 0 | 0 | |
| 3 AWG | 0,352 (8,9) | 65 | 29 | 0 | 0 | 0 | 0 | 0 | 0 | |
| 2 AWG | 0,384 (9,8) | 55 | 24 | 0 | 0 | 0 | 0 | 0 | 0 | |
| 1 AWG | 0,446 (11,3) | 40 | 18 | 0 | 0 | 0 | 0 | 0 | 0 | |
| 1/0 AWG | 0,496 (12,3) | 34 | 15 | 0 | 0 | 0 | 0 | 0 | 0 | |
| 2/0 AWG | 0,532 (13,5) | 28 | 12 | 0 | 0 | 0 | 0 | 0 | 0 | |

Remarque : Utiliser une attache à tête plate de calibre 8 (tête de 7.9mm, 5/16" po.) ou une fixation équivalente pour assujettir le tube guide-fils et les raccords à la surface de montage.

Remarque : Mise à la terre: Utiliser l'emplacement de terre prévu ou poser le matériel qui convient: patte de mise à la terre, cosse circulaire à oeil ou écrou de blocage et manchon de terre.

CAPACIDADES DE CABLEADO PARA LAS COMUNICACIONES DE 6000 SERIES RACEWAY

| TAMAÑO DEL CABLE | D.E. (DIÁ. APROX.) | | DIVIDIDO 40 % REL. | NO DIVIDIDO 40 % REL. |
|------------------|--------------------------------|-----------------------|-----------------------|--------------------------|
| | Pulgadas | (mm) | | |
| PAR TRENZADO | 4 pares, 24 AWG, Cat. 3 | 0.190 (4.8) | 101 | 225 |
| SIN BLINDAR | 4 pares, 24 AWG, Cat. 5e | 0.210 (5.3) | 83 | 184 |
| | 4 pares, 24 AWG, Cat. 6 | 0.250 (6.3) | 58 | 130 |
| | 4 pares, 24 AWG, Cat. 6a* | 0.354 (9.0) | 29 | 65 |
| | 25 pares, 24 AWG | 0.410 (10.4) | 21 | 48 |
| COAXIAL | RG6/U | 0.270 (6.9) | 50 | 111 |
| FIBRA | ZipCord | 0.118 x 0.236 (3 x 6) | 103 | 230 |
| | Fibra entretrejida de 4 hebras | 0.187 (4.8) | 104 | 233 |
| | Fibra entretrejida de 6 hebras | 0.256 (6.5) | 55 | 124 |

* Cable de Categoría 6 (6a) aumentada para la Ethernet de 10 gigabit; diámetro máximo de cable permitido de acuerdo con el apéndice n.º 11 ANSI TIA/EIA 568-B.2.

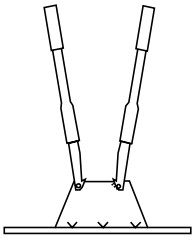
CAPACIDADES DE CABLEADO PARA LA ALIMENTACIÓN DE 6000 SERIES RACEWAY

| TAMAÑO DEL CABLE | D.E. | NÚMERO DE CONDUCTORES (40 % REL.) | | | | | | | |
|------------------|--------------|-----------------------------------|----------|--|----------|---|----------|--|----------|
| | | SIN DISPOSITIVOS | | CON DISP. DOBLES RECT. 1.59 in ² (1025 mm ²) | | CON DISP. PICO/GFCI 2.30 in ² (1485 mm ²) | | RECEPTÁCULOS SIMPLES GRANDES 3.00 in ² (1935 mm ²) | |
| | | Sin dividir | Dividido | Sin dividir | Dividido | Sin dividir | Dividido | Sin dividir | Dividido |
| THHN/THWN | Pulg (mm) | | | | | | | | |
| 14 AWG | 0.111 (2.8) | 659 | 296 | 528 | 231 | 470 | 202 | 412 | 173 |
| 12 AWG | 0.130 (3.3) | 481 | 216 | 395 | 168 | 342 | 147 | 300 | 126 |
| 10 AWG | 0.164 (4.2) | 303 | 136 | 243 | 106 | 216 | 92 | 189 | 79 |
| 8 AWG | 0.216 (5.5) | 174 | 78 | 140 | 61 | 124 | 53 | 109 | 45 |
| 6 AWG | 0.254 (6.5) | 126 | 56 | 101 | 44 | 89 | 38 | 78 | 33 |
| 4 AWG | 0.324 (8.2) | 77 | 34 | 0 | 0 | 0 | 0 | 0 | 0 |
| 3 AWG | 0.352 (8.9) | 65 | 29 | 0 | 0 | 0 | 0 | 0 | 0 |
| 2 AWG | 0.384 (9.8) | 55 | 24 | 0 | 0 | 0 | 0 | 0 | 0 |
| 1 AWG | 0.446 (11.3) | 40 | 18 | 0 | 0 | 0 | 0 | 0 | 0 |
| 1/0 AWG | 0.496 (12.3) | 34 | 15 | 0 | 0 | 0 | 0 | 0 | 0 |
| 2/0 AWG | 0.532 (13.5) | 28 | 12 | 0 | 0 | 0 | 0 | 0 | 0 |

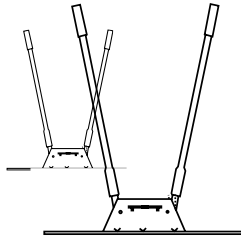
Nota: Use un sujetador de cabeza plana No. 8 (tamaño de cabeza: 7.9mm, 5/16" de pulgada) o su equivalente para unir la canalita y los accesorios a la superficie de montaje.

Nota: Conexión a tierra: Use un localizador de tierra cuando se proporcione o instale una orejeta de tierra, anillo terminal o contratuerca y cojinetes de tierra apropiados.

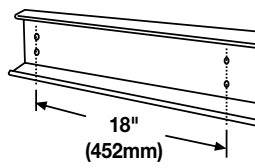
660B



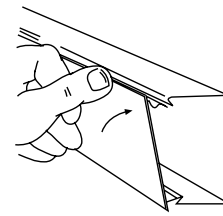
640C



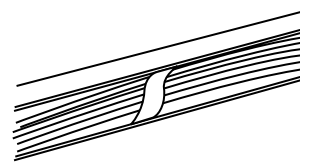
6000B-10



6000C



4000WC

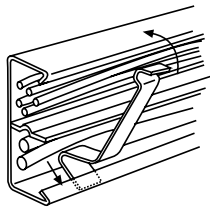


NOTE: 6000 Series Raceway must be secured to the mounting surface at intervals not exceeding 4' (1.2m).

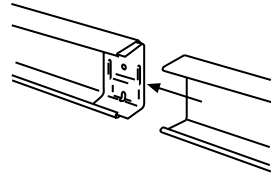
Remarque : Le chemin de câbles de série 6000 doit être fixé à la surface de montage à des intervalles n'excédant pas 4 pi (1,2 m).

Nota: 6000 Series Raceway debe asegurarse a la superficie de montaje en intervalos que no superen los 4' (1.2 m).

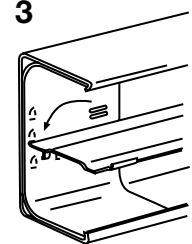
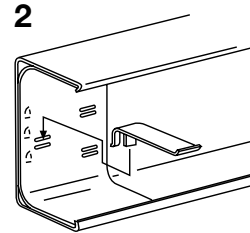
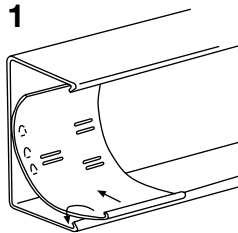
4000WC



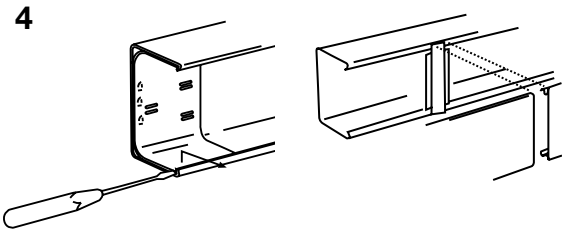
6001



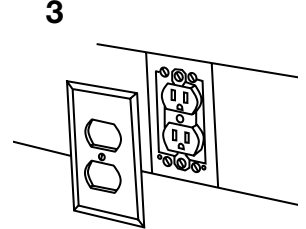
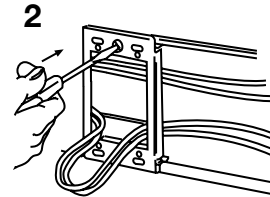
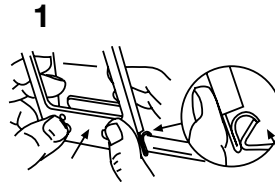
6001DA



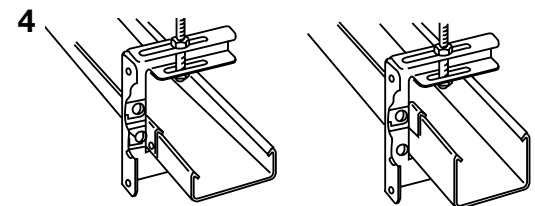
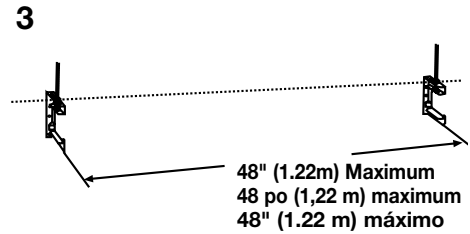
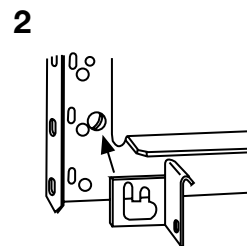
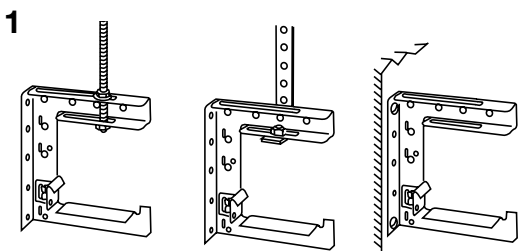
6006



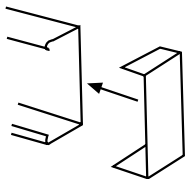
6007C-2/6007C-1



6008A

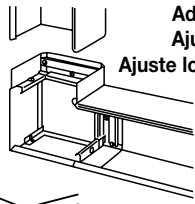


6010B



6011TX

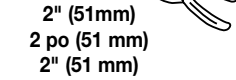
1



Adjust Screws if needed
Ajuster les vis au besoin
Ajuste los tornillos de ser necesario

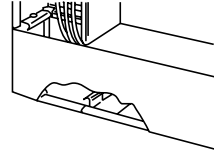
1/2" (12.7mm)
1/2 po (12,7 mm)
1/2" (12.7 mm)

6001DA



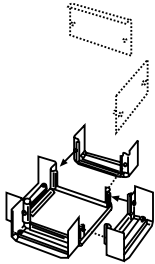
2" (51mm)
2 po (51 mm)
2" (51 mm)

2

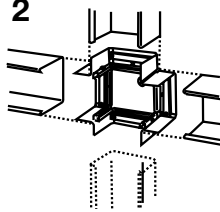


6011TX

1



2



NOTE:

Wire Fill: 1/2 of values shown on page 2.

Remarque :

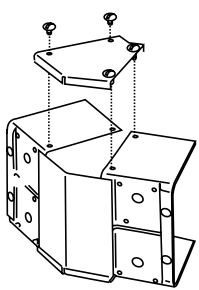
Remplissage de câbles : 1/2 des valeurs indiquées à la page 2.

Nota:

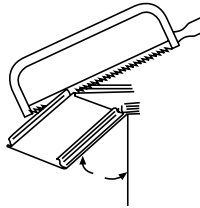
Relleno de cables: 1/2 de los valores se muestra en la página 2.

6012TX

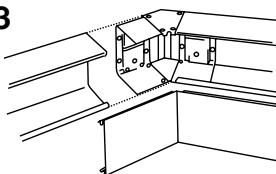
1



2

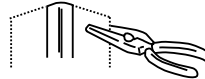


3

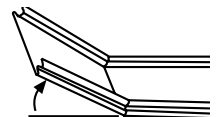
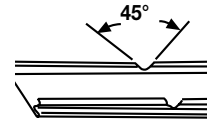


60012TX

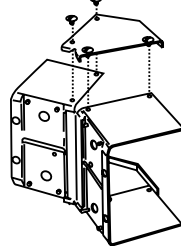
1



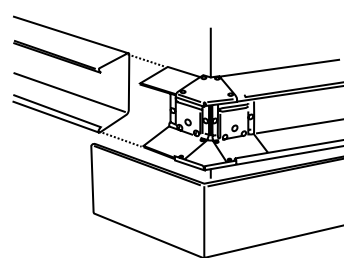
3



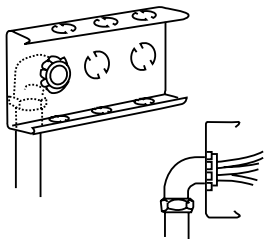
2



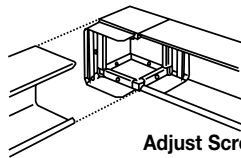
4



6014A

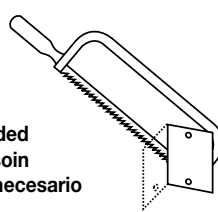


6017TX

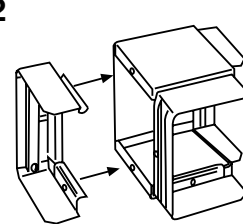


6017TX

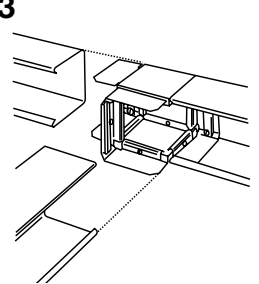
1



2



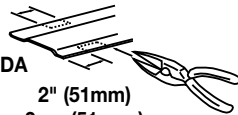
3



Adjust Screws if needed
Ajuster les vis au besoin
Ajuste los tornillos de ser necesario

1/2" (12.7mm)
1/2 po (12,7 mm)
1/2" (12.7 mm)

6001DA



2" (51mm)
2 po (51 mm)
2" (51 mm)

NOTE:

Wire Fill: 1/2 of values shown on page 2

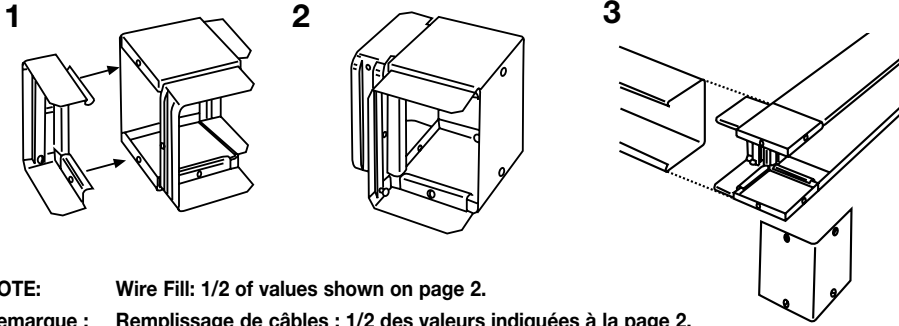
Remarque :

Remplissage de câbles : 1/2 des valeurs indiquées à la page 2.

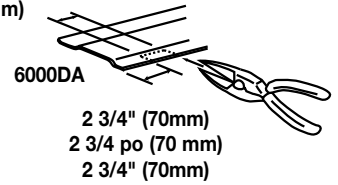
Nota:

Relleno de cables: 1/2 de los valores se muestra en la página 2.

6017TX

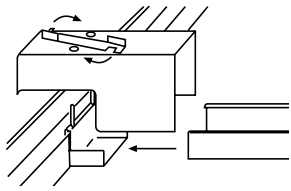


1" (25mm)
1 po (25mm)
1" (25mm)

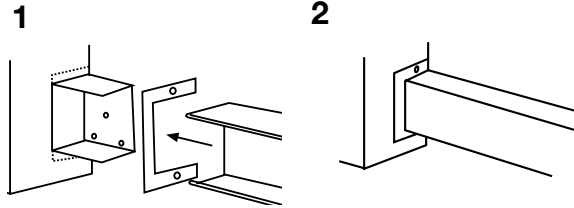


NOTE: Wire Fill: 1/2 of values shown on page 2.
Remarque : Remplissage de câbles : 1/2 des valeurs indiquées à la page 2.
Nota: Relleno de cables: 1/2 de los valores se muestra en la página 2.

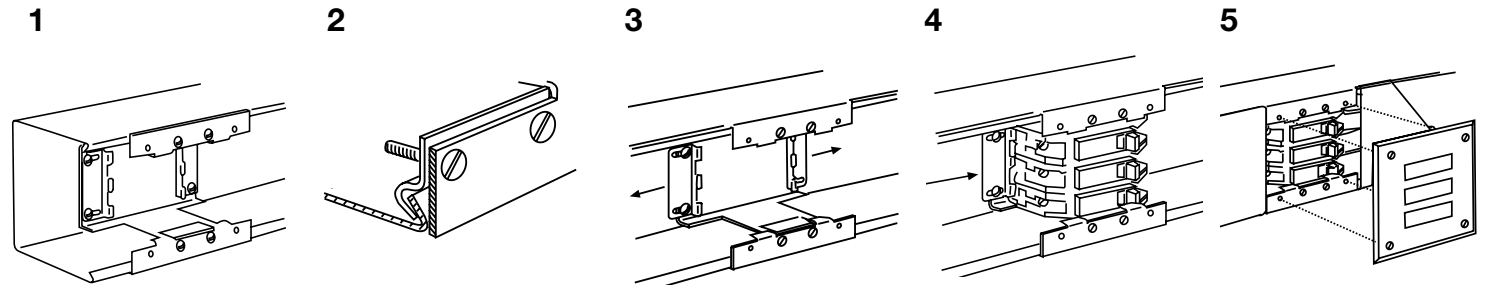
6074/6074A



6086



6046KD



| WIRE CAPACITY | | Size AWG | | | | | | | | | |
|---------------|-----|----------|----|----|----|----|----|----|-----|-----|-----|
| Type | 2/0 | 1/0 | #1 | #2 | #3 | #4 | #6 | #8 | #10 | #12 | #14 |
| THHN, THWN | 14 | 17 | 20 | 28 | 33 | 39 | 64 | 88 | 153 | 244 | 334 |

| Capacité / câble | | Calibre AWG | | | | | | | | | |
|------------------|-----|-------------|------|------|------|------|------|------|-------|-------|-------|
| Type | 2/0 | 1/0 | n° 1 | n° 2 | n° 3 | n° 4 | n° 6 | n° 8 | n° 10 | n° 12 | n° 14 |
| THHN, THWN | 14 | 17 | 20 | 28 | 33 | 39 | 64 | 88 | 153 | 244 | 334 |

| Capacidad del cable | | Tamaño en AWG | | | | | | | | | |
|---------------------|-----|---------------|----|----|----|----|----|----|-----|-----|-----|
| Tipo | 2/0 | 1/0 | #1 | #2 | #3 | #4 | #6 | #8 | #10 | #12 | #14 |
| THHN, THWN | 14 | 17 | 20 | 28 | 33 | 39 | 64 | 88 | 153 | 244 | 334 |

No: 41401R1 0517



© Copyright 2017 Legrand All Rights Reserved.
© Copyright 2017 Tous droits réservés Legrand.
© Copyright 2017 Legrand Todos los derechos reservados.

860.233.6251
1.877.BY.LEGRAND
www.legrand.us
www.legrand.ca

