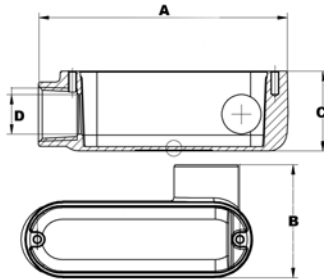


Aluminum Rigid Conduit Bodies LR Type -Threaded



To Provide Access to Conductors for Pulling, Splicing, and Maintenance. Threaded for Rigid & IMC Conduit

Dimensions = Inches

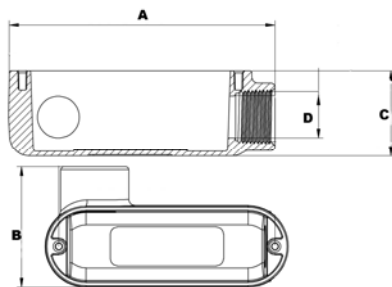
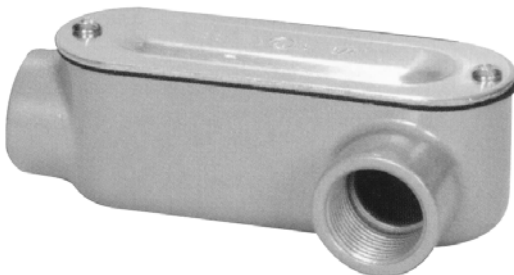
Cat. No	Trade Size	Dimensions-LR Series				Box Qty
		A	B	C	D	
14080	1/2"	4.31	2.03	1.36	.61	50
14081	3/4"	5.08	2.30	1.63	.81	50
14082	1"	5.92	2.68	1.89	1.04	25
14083	1-1/4"	7.82	3.52	2.50	1.37	10
14084	1-1/2"	7.82	3.52	2.50	1.60	10
14085	2"	10.05	4.27	3.41	2.06	10
14086	2-1/2"	12.83	5.89	3.98	2.46	1
14087	3"	12.83	5.89	4.53	3.06	1
14088	3-1/2"	15.65	7.66	5.59	3.54	1
14089	4"	15.65	7.66	5.59	4.02	1

- ▶ Tapered Threaded Hubs (NPT)
- ▶ RainTight when used with Gasketed Covers
- ▶ Die-Cast from High-Strength, Corrosion and Weather Resistant, Copper Free Aluminum Alloy
- ▶ Flat Back Design for easy mounting close to walls

With Cover and Gasket

14090	1/2"	4.31	2.03	1.36	.61	50
14091	3/4"	5.08	2.30	1.63	.81	50
14092	1"	5.92	2.68	1.89	1.04	25
14093	1-1/4"	7.82	3.52	2.50	1.37	10
14094	1-1/2"	7.82	3.52	2.50	1.60	10
14095	2"	10.05	4.27	3.41	2.06	10
14096	2-1/2"	12.83	5.89	3.98	2.46	1
14097	3"	12.83	5.89	4.53	3.06	1
14098	3-1/2"	15.65	7.66	5.59	3.54	1
14099	4"	15.65	7.66	5.59	4.02	1

Aluminum Rigid Conduit Bodies LL Type -Threaded



To Provide Access to Conductors for Pulling, Splicing, and Maintenance. Threaded for Rigid & IMC Conduit

Dimensions = Inches

Cat. No	Trade Size	Dimensions-LL Series				Box Qty
		A	B	C	D	
14100	1/2"	4.31	2.03	1.36	.61	50
14101	3/4"	5.08	2.30	1.63	.81	50
14102	1"	5.92	2.68	1.89	1.04	25
14103	1-1/4"	7.82	3.52	2.50	1.37	10
14104	1-1/2"	7.82	3.52	2.50	1.60	10
14105	2"	10.05	4.27	3.41	2.06	10
14106	2-1/2"	12.83	5.89	3.98	2.46	1
14107	3"	12.83	5.89	4.53	3.06	1
14108	3-1/2"	15.65	7.66	5.59	3.54	1
14109	4"	15.65	7.66	5.59	4.02	1

With Cover and Gasket

14110	1/2"	4.31	2.03	1.36	.61	50
14111	3/4"	5.08	2.30	1.63	.81	50
14112	1"	5.92	2.68	1.89	1.04	25
14113	1-1/4"	7.82	3.52	2.50	1.37	10
14114	1-1/2"	7.82	3.52	2.50	1.60	10
14115	2"	10.05	4.27	3.41	2.06	10
14116	2-1/2"	12.83	5.89	3.98	2.46	1
14117	3"	12.83	5.89	4.53	3.06	1
14118	3-1/2"	15.65	7.66	5.59	3.54	1
14119	4"	15.65	7.66	5.59	4.02	1

- ▶ Tapered Threaded Hubs (NPT)
- ▶ RainTight when used with Gasketed Covers
- ▶ Die-Cast from High-Strength, Corrosion and Weather Resistant, Copper Free Aluminum Alloy
- ▶ Flat Back Design for easy mounting close to walls