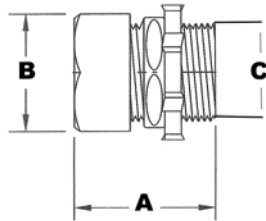


## EMT Compression Connectors - Zinc Die Cast

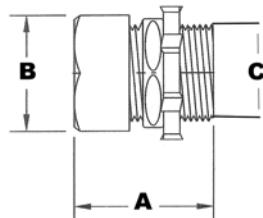


- ▶ To secure and terminate EMT to knockouts in concrete tight box, dry or damp location applications
- ▶ Male NPSM hub threads
- ▶ Concrete tight
- ▶ UL Listed for EMT Conduit
- ▶ 2-1/2" - 4" are also UL Listed for use with Rigid & IMC

Dimensions = Inches

Cat. No.	Trade Size	Dimensions			Inner Box	Outer Box
		A	B	C		
14910	1/2"	1.24	.98	.59	50	500
14911	3/4"	1.26	1.22	.78	25	250
14912	1"	1.46	1.46	1.00	15	150
14913	1-1/4"	1.83	1.85	1.32	10	100
14914	1-1/2"	1.85	2.07	1.53	10	40
14915	2"	2.01	2.54	1.99	5	20
14916	2-1/2"	2.54	3.37	2.35	-	12
14917	3"	2.54	3.94	2.95	-	12
14918	3-1/2"	2.60	4.45	3.43	-	6
14919	4"	2.60	1.94	3.91	-	6

## EMT Compression Connectors - Insulated Throat - Zinc Die Cast

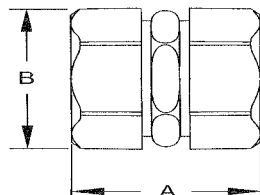


- ▶ To secure and terminate EMT to knockouts in concrete tight box, dry or damp location application
- ▶ Male NPSM hub threads
- ▶ Concrete tight
- ▶ UL Listed for EMT Conduit
- ▶ 2-1/2" - 4" are also UL Listed for use with Rigid & IMC

Dimensions = Inches

Cat. No.	Trade Size	Dimensions			Inner Box	Outer Box
		A	B	C		
14920	1/2"	1.28	.98	.59	50	500
14921	3/4"	1.32	1.22	.78	25	250
14922	1"	1.52	1.46	1.00	15	150
14923	1-1/4"	1.89	1.85	1.32	10	100
14924	1-1/2"	1.91	2.07	1.53	10	40
14925	2"	2.09	2.54	1.99	5	20
14926	2-1/2"	2.62	3.37	2.35	-	12
14927	3"	2.62	3.94	2.95	-	12
14928	3-1/2"	2.68	4.45	3.43	-	6
14929	4"	2.68	4.94	3.91	-	6

## EMT Compression Couplings - Zinc Die Cast



- ▶ To join lengths of EMT for concrete tight, dry or damp location applications
- ▶ Concrete tight
- ▶ UL Listed for EMT Conduit
- ▶ 2-1/2" - 4" are also UL Listed for use with Rigid & IMC

Dimensions = Inches

Cat. No.	Trade Size	Dimensions		Inner Box	Outer Box
		A	B		
14930	1/2"	1.69	.98	50	500
14931	3/4"	1.73	1.22	25	250
14932	1"	1.85	1.46	15	150
14933	1-1/4"	2.36	1.85	10	100
14934	1-1/2"	2.40	2.07	10	50
14935	2"	2.44	2.54	5	20
14936	2-1/2"	3.15	3.37	-	12
14937	3"	3.15	3.94	-	12
14938	3-1/2"	3.27	4.45	-	6
14939	4"	3.27	4.94	-	6